

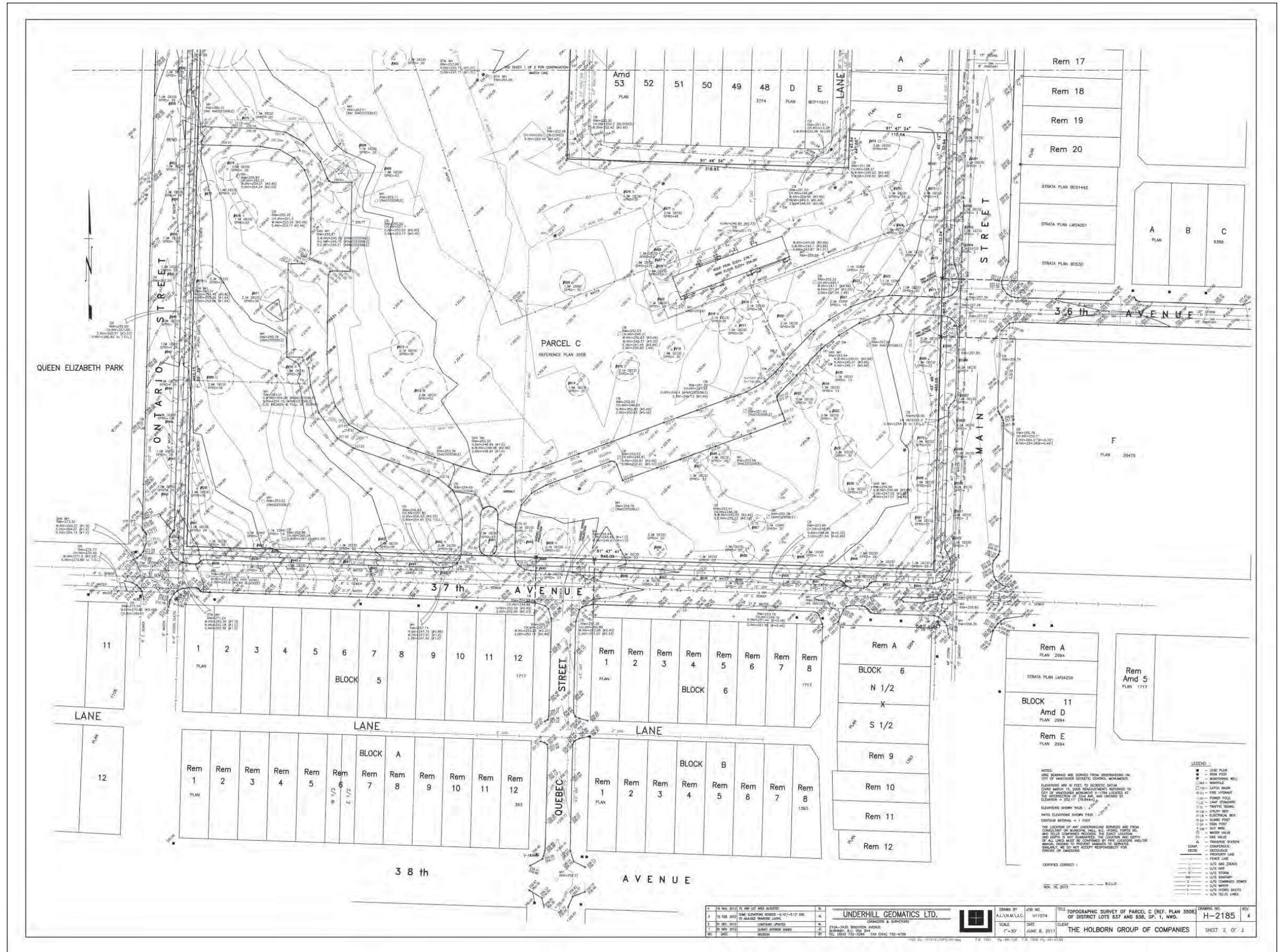
7 Appendices



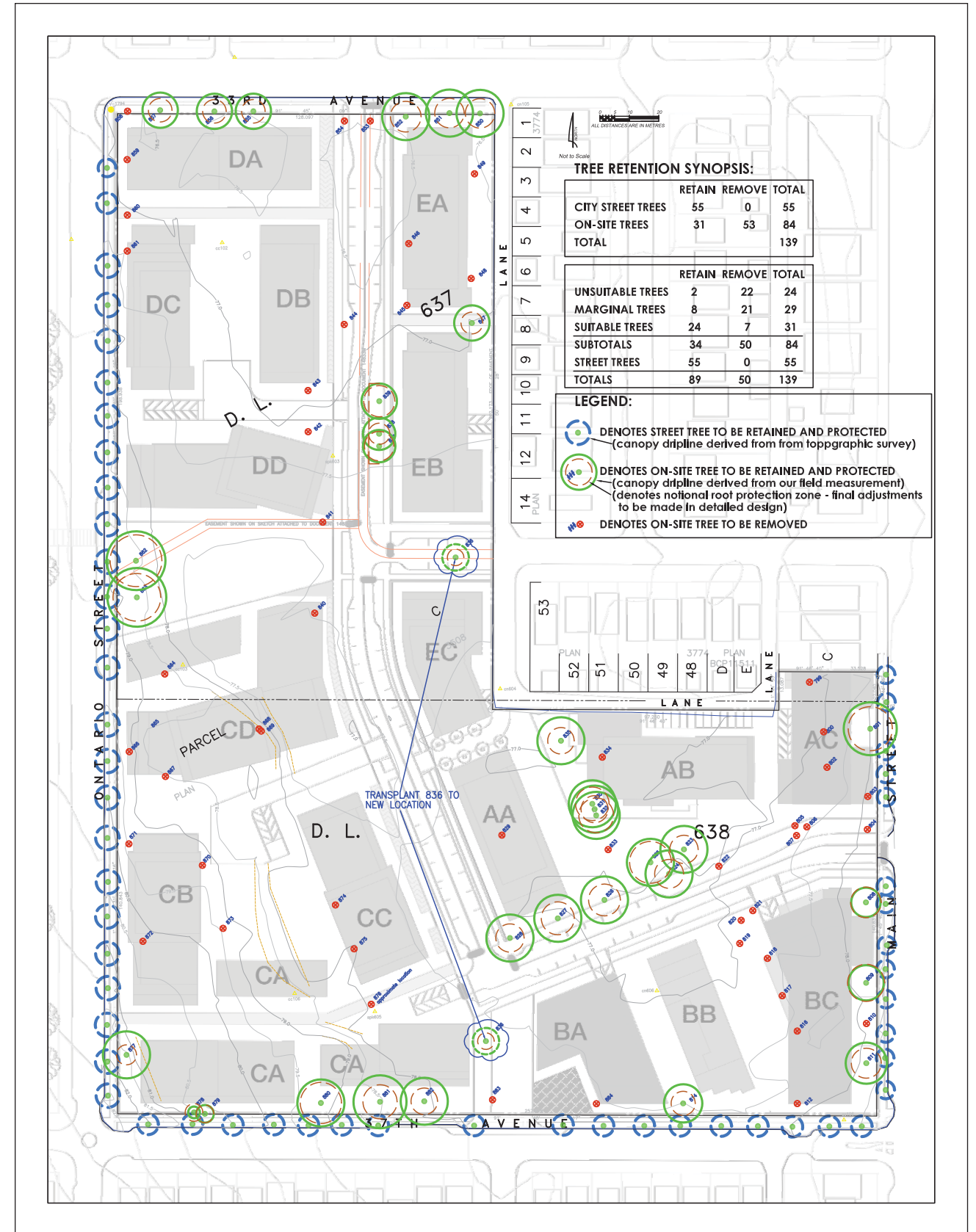
7 Appendices

7.1 Survey and Topographic Plan





7.2 Tree Inventory and Assessment



ARBORTECH CONSULTING

TREE INVENTORY AND ASSESSMENT LIST



Notes to Reader:

Tag # denotes the tag affixed to the tree for reference in report and on drawing. See drawing or figure for locations.

Ht and **Spr** denote the height and spread (radius of crown) of the tree in metres as measured or estimated by the assessor if applicable.

Dbh denotes the diameter of the trunk measured at 1.4 m above grade or as per arboricultural standards (i.e. for multi stem trees).

Cond denotes health and structural rating using Visual Tree Assessment (VTA) procedures. **U** denotes **unsuitable**, **M** denotes **marginal**, **S** denotes **suitable**. See report for details.

Action denotes the proposed treatment of the tree conditional to detailed engineering, architectural and/or landscape designs. See report and drawing for details.

Tag #	Ht	Spr	Dbh (cm)	Tree Type (Common name)	Cond	Observations (based on VTA only)	Action
799	12.6	8	70	Tulip	M	This tree has been previously headed, resulting in a rounded crown that is approximately 9m in height.	Remove - In building envelope
800	19	2.5	41	English oak	S	There is kink in trunk at 4m above grade, and it appears the area beyond the dripline has been excavated and filled with sand.	Remove - In building envelope
801	18.7	9	75	Copper beech	S	The large crown hangs over the city sidewalk.	Retain and protect
802		4	47	Red oak	M	This tree has been historically topped, and there are no external signs of decay. Replacement leader foliage is concentrated to the end 40% (lion's tail).	Remove - In building envelope
803	6.6	3	27	English Hawthorn	M	This tree is infected with bacterial leaf blight.	Remove -In building envelope
804	6.6	3	29	English Hawthorn	M	This tree is infected with bacterial leaf blight.	Remove - Road construction impacts
805	11	3	30	Sawara Cypress	U	The tree's crown is sparse and thinning, with approximately 30% dieback. Moderate lean.	Remove - Due to condition
806	11	3	29	Sawara Cypress	U	The tree's crown is sparse and thinning, with approximately 30% dieback. Severe lean.	Remove - Due to condition
807	11	3	25x2	Sawara Cypress	U	The tree's crown is sparse and thinning, with approximately 30% dieback. This twin leader tree joined at the basal union, with slight inclusions extending into the root crown.	Remove - Due to condition
808	13.3	5	52	Norway maple	S	This tree has healthy and vigorous crown the sweeps over the City sidewalk.	Retain and protect
809	14.3	6	63	Norway maple	S	This tree has healthy and vigorous crown the sweeps over the City sidewalk. Concentrated replacement growth (witches broom) low in crown on west side likely a result of improper historical pruning.	Retain and protect
810	11.1	6	41	Norway maple	M	The crown is very sparse and thinning with a high percent of twiggy die back.	Remove - In building envelope
811	12.6	7	51	Norway maple	S	This tree has healthy and vigorous crown the sweeps over the City sidewalk.	Retain and protect
812	10.7	7	42	Norway maple	M	The tree's crown is sparse and thinning.	Remove - In building envelope
813	8.1	2.5	36	Lawson cypress	M	This tree's has been previously topped resulting, several small diameter replacement leaders, and the multi stem union does not appear to have an significant inclusions within the union.	REMOVED FOR PH 1 BUILDING BB
814	12.6	6.5	41	Norway maple	M	The tree's crown is sparse and thinning.	Retain and protect

LITTLE MOUNTAIN HOUSING
37TH AVE AND MAIN ST VANCOUVER
RE-ZONING MASTER TREE LIST

PAGE 1 of 5

ACL FILE: 10180
AUGUST 4, 2010
REV 4: FEBRUARY 3, 2013



a division of:

Tag #	Ht	Spr	Dbh (cm)	Tree Type (Common name)	Cond	Observations (based on VTA only)	Action
815		3.5	85	Lawson cypress	U	This tree's crown comprised of two leaders that join, 3m above grade. There is a deep inclusion that propagates into a crack below the union.	REMOVED FOR PH 1 BUILDING BB
816	15	8	60	Horse chestnut	M	The crown has been rounded from previous heading and topping. There is not any signs of decay at these topping sites. Asymmetric crown.	Remove - In building envelope
817	11.7	7	50	Horse chestnut	M	The crown has been rounded from previous heading and topping. There is not any signs of decay at these topping sites.	Remove - In building envelope
818	11.6	8	60	Horse chestnut	M	The crown has been rounded from previous heading and topping. There is not any signs of decay at these topping sites.	Remove - In building envelope
819	13.8	9	71	Norway maple	U	Historical severe pruning has removed 50% of the crown on the west side for BC Hydro safety setback.	Remove - Due to condition
820	7	3	Multi	Holly	M	This tree has been previously headed, and the crown is infested with leafminer.	Remove - In building envelope
821	8	3	Multi	Holly	M	This tree has been previously headed, and the crown is infested with leafminer.	Remove - In building envelope
822	18.7	8	60	Linden	U	Infested with aphids. Growing in a grove type setting with three other trees, these trees have merged crowns and should be retained as a group. Recent severe pruning for BC Hydro line re-alignment.	Remove - Due to condition
823	21.3	8	48	Linden	M	Infested with aphids. Growing in a grove type setting with three other trees, these trees have merged crowns and should be retained as a group. Recent severe pruning for BC Hydro line re-alignment.	Retain and protect
824	19.3	8	49	Linden	M	Infested with aphids. Growing in a grove type setting with three other trees, these trees have merged crowns and should be retained as a group. Recent severe pruning for BC Hydro line re-alignment.	Retain and protect
825	20.2	8	71	Linden	S	Infested with aphids. Growing in a grove type setting with three other trees, these trees have merged crowns and should be retained as a group.	Retain and protect
826	18.4	8	54	Linden	S	Infested with aphids.	Retain and protect
827	19.2	8	56	Linden	S	Infested with aphids.	Retain and protect
828		8	48	Linden	S	Infested with aphids, and the crown is slightly sparse.	Retain and protect
829	17.1	5	46	Douglas-fir	M	Declining health.	Remove - In building envelope
830	21.1	8	57	Hornbeam	S	This tree is growing approximately 1m away from another tree and is part of a three tree row. Must be retained as a group.	Retain and protect



a division of:

Tag #	Ht	Spr	Dbh (cm)	Tree Type (Common name)	Cond	Observations (based on VTA only)	Action
831	21.1	8	46	Hornbeam	S	This tree is growing approximately 1m away from another tree and is part of a three tree row. Must be retained as a group.	Retain and protect
832	21.1	8	59	Hornbeam	S	This tree is growing approximately 1m away from another tree and is part of a three tree row. Must be retained as a group.	Retain and protect
833	16	2	18x2	Holly	U	Displaying symptoms of Phytophthora ilicis: major crown dieback, and overall crown thinning.	Remove - Due to condition
834		7	65	European birch	U	This tree has dead tops, and is infested with Bronze Birch Borer.	Remove - In building envelope
835	19.6	8	45	English oak	S	Approximately 15 % twiggy dieback.	Retain and protect
836	9.6	4.5	28	Norway maple	S	Full crown with some winter moth damage visible.	Transplant
837		5.5	50	Hornbeam	M	The crown merges with the adjacent tree.	Retain - conditional to road design
838	16	5.5	36	Hornbeam	M	The crown merges with the adjacent tree.	Retain - conditional to road design
839	16	6	53	Hornbeam	S		Retain - conditional to road design
840	16	3.5	26	European birch	U	This tree is mostly dead, and infested with Bronze Birch Borer.	Remove - In building envelope
841	9	3.5	24	European birch	U	This tree is mostly dead, and infested with Bronze Birch Borer.	Remove - In building envelope
842	15	6.5	40	Hornbeam	U	This tree has been previously topped at 4m above grade, with no central leader and a rounded form.	Remove - In building envelope
843	16	5	38	Hornbeam	M	Vigorous crown formed by multiple leaders and with past pruning impacts, leaving a dominant and subordinate crown form.	Remove - In building envelope
844	18	6	46	European birch	U	This tree is infested with BBB and mostly dead.	Remove - Due to condition
845	17	6	29	European birch	U	This tree is infested with BBB and mostly dead.	Remove - In building envelope
846		6	36	European birch	U	This tree is infested with BBB and mostly dead.	Remove - In building envelope
847	14.7	6	37	Linden	S	This tree has straight singular leader.	Retain and protect
848	16.7	7.5	46	Linden	S	Rounded form.	Remove - In building envelope
849		8	48	Linden	M	This tree has been previously hydro pruned on the east side, and there is a high volume of water shoots throughout the crown.	Remove - In building envelope
850	14.1	8	50	Honey locust	U	Shared with City. Infested with Podgall midge, resulting in 40% of crown dieback.	Retain and protect
851	15.9	8	50	Honey locust	U	Shared with City. Infested with Podgall midge, resulting in 40% of crown dieback. Leaning trunk.	Retain and protect
852	20.1	8	52	Linden	S	Shared with City. Multiple leaders join at the 4m above grade stem union, the union appears to be sound.	Retain and protect
853		7	43	Ash	M	Slightly sparse and manifesting symptoms of drought stress. Moderate dieback and deadwood in crown.	Remove - Road construction impacts



a division of:

Tag #	Ht	Spr	Dbh (cm)	Tree Type (Common name)	Cond	Observations (based on VTA only)	Action
854	21.6	7	45	Ash	M	Slightly sparse and manifesting symptoms of drought stress. Moderate dieback and deadwood in crown.	Remove - Infrastructure conflicts
855	16.1	6	40	Linden	S	Shared with City. Full crowns but with severe aphid infestation.	Retain and protect
856	15.1	6	40	Linden	S	Shared with City. Full crowns but with severe aphid infestation.	Retain and protect
857	14.3	6	40	Linden	S	Shared with City. Full crowns with severe aphid infestation. Manifesting symptoms of drought stress.	Retain and protect
858	11.1	6	43	Norway maple	U	Shared with City. This tree has been previously, headed to 6m in height with severe decay in scaffold limbs, resulting in a very rounded crown.	Remove - Due to condition
859	11.5	6	44	Norway maple	U	This tree has been previously, headed to 6m in height with decay in scaffold limbs, slightly asymmetric crown.	Remove - In building envelope
860	14	6	52	Norway maple	U	Previously topped and the crown is asymmetric too the east, and damaged by fire.	Remove - Due to condition
861		6	36	Norway maple	U	Mostly dead from fire damage.	Remove - In building envelope
862	21.1	10	88	Red oak	S	Slightly sparse and manifesting symptoms of drought stress. Some deadwood in crown.	Retain and protect
863	20.6	10	81	Red oak	S	Slightly sparse and manifesting symptoms of drought stress. Some deadwood in crown.	Retain and protect
864	10	4	35	Fruiting cherry	M	The crown is infected with bacterial blight and canker. This tree sweeps to the south west.	Remove - In building envelope
865	17	6.5	42	Horse chestnut	S	Slightly sparse and infected with blight.	Remove - In building envelope
866	16	6	36	Horse chestnut	S	Sparse and infected with blight.	Remove - In building envelope
867	17	7	47	Horse chestnut	U	This tree is previously headed to 8m above grade, and there is a high volume of water shoots throughout the crown.	Remove - In building envelope
868	17	4	Multi	European birch	U	This tree is mostly dead, and infested with Bronze Birch Borer.	Remove - In building envelope
869	17	7	30x2	Weeping willow	U	This is asymmetric to the southeast and the adjacent birch tree's scaffold limb is embedded in the trunk at approximately 4m causing the trunk to kink.	Remove - In building envelope
870	17.4	8	41	English oak	M	This has been historically headed and the majority of the limbs are now marm formed, and several of significant kinks.	Remove - In building envelope
871	8.7	10	60	Horse chestnut	U	It appears that there several scaffold limbs have been previously removed. Small amount of decay visible. Historically topped at approximately 5m. A high volume of water shoots replace leaders. Inferior form with no reasonable chance for restoration.	Remove - In building envelope



a division of:

Tag #	Ht	Spr	Dbh (cm)	Tree Type (Common name)	Cond	Observations (based on VTA only)	Action
872	15	10	62	Horse chestnut	U	It appears that there several scaffold limbs have been previously removed. Small amount of decay visible. Historically topped at approximately 5m. A high volume of water shoots replace leaders. Inferior form with no reasonable chance for restoration.	Remove - In building envelope
873	16.1	10	42	English oak	S	Slightly sparse and manifesting symptoms of drought stress.	Remove - In building envelope
874	19.1	10	50	English oak	S	Slightly sparse and manifesting symptoms of drought stress. Historic crown raise pruning to 4m.	Remove - In building envelope
875	22.6	10	60	English oak	S	Slightly sparse and manifesting symptoms of drought stress.	Remove - In building envelope
876	5.7	2.5	24	Japanese cherry	M	Infected with bacterial blight, and the crown is sparse.	Remove - In building envelope
877	16	8	34	Linden	S	Dense crown with a severe aphid infestation.	Retain and protect
878	15.3	2	20	Sitka Spruce	M	Small suppressed and asymmetric crown.	Retain and protect
879	15.3	3	26	Sitka Spruce	M	Infested with Cooley spruce gall adelgid.	Retain and protect
880	18.3	8	70	Linden	S	There is a high volume of water shoots throughout the crown, that have become leaders.	Retain and protect
881	14.8	9	58	Norway maple	S	Slight sweep to the south.	Retain and protect
882	14.6	8	45	Linden	M	This tree has been previously headed with a high volume of water shoots throughout the crown.	Retain and protect
883	21.1	9	63	Linden	M	This tree has been previously headed with a high volume of water shoots throughout the crown.	Remove - Infrastructure conflicts
884	14.1	8	43	Norway maple	M	The crown is asymmetric to the east with a slight sweep.	Remove - In building envelope
885	15	7	31	European birch	U	This tree is infected with BBB and is mostly dead.	REMOVED FOR PH 1 BUILDING BB
886	19	7	42	European birch	U	This tree is infected with BBB and with dieback at the top.	REMOVED FOR PH 1 BUILDING BB

Holborn's mission is to elevate the lifestyle of the people who choose to live, work and stay in what we build.

Holborn is a Vancouver-based developer with an international background and global vision. Holborn's diverse portfolio of projects and real estate management services throughout British Columbia include retail, residential, office and hotel properties.