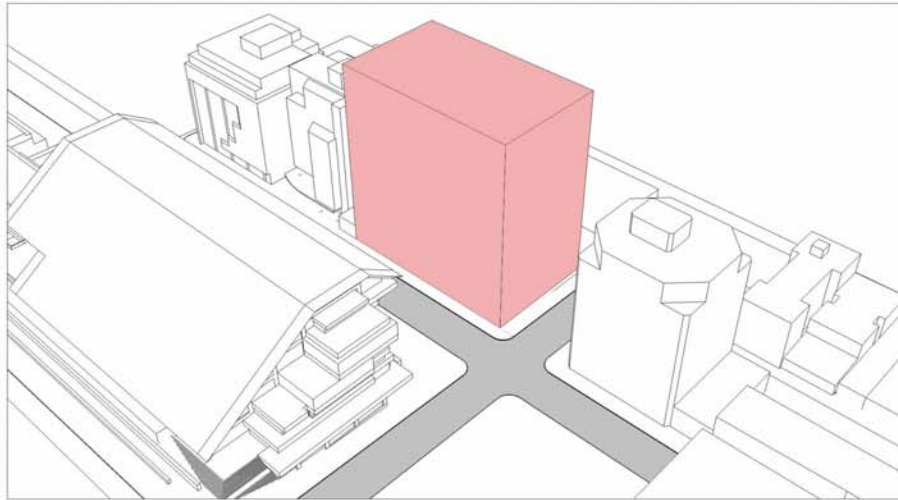
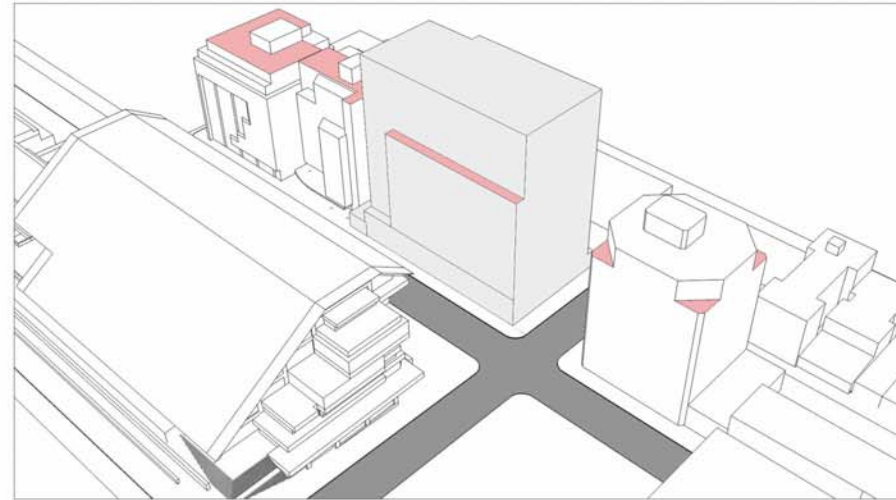


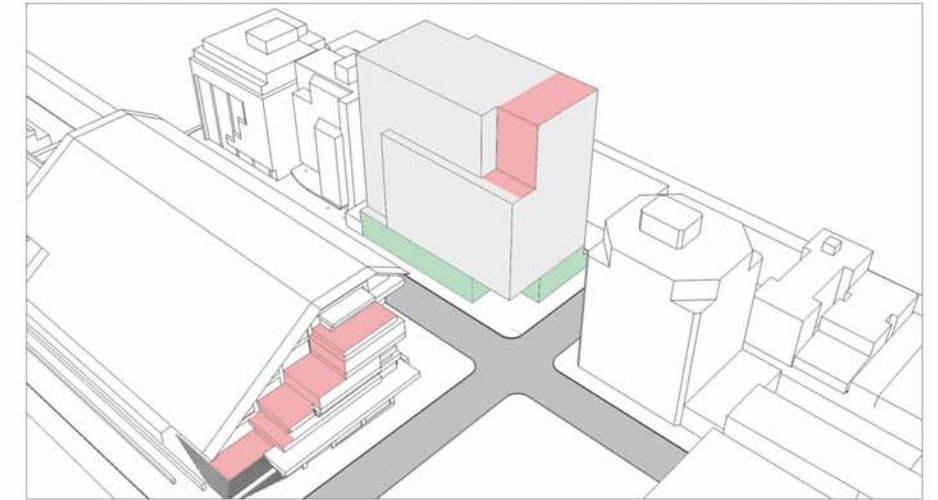
## Massing Rationale



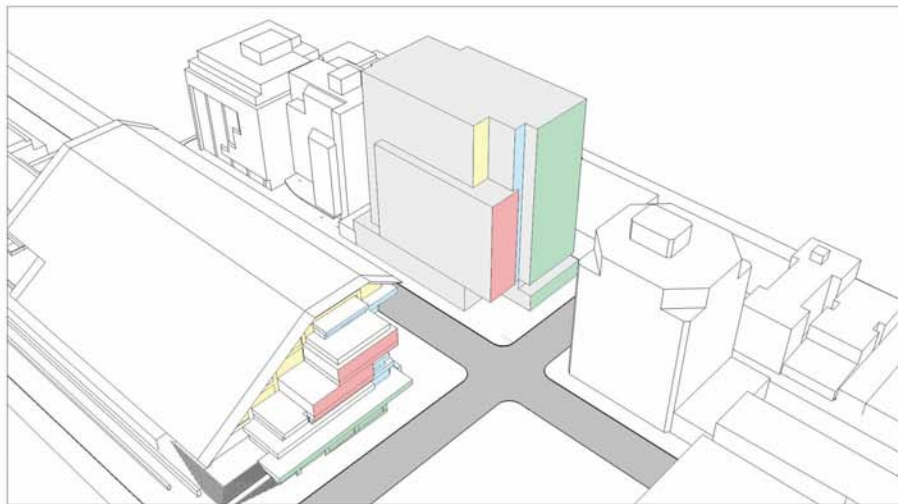
(1) Height limited to approximately 200' by view corridor.



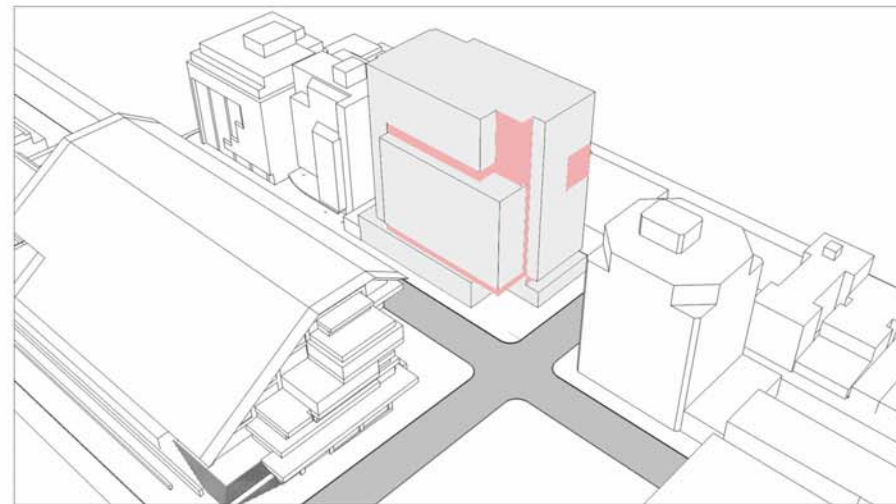
(2) Introduction of streetwall 'shoulder' to align with Eaton's cornice line.



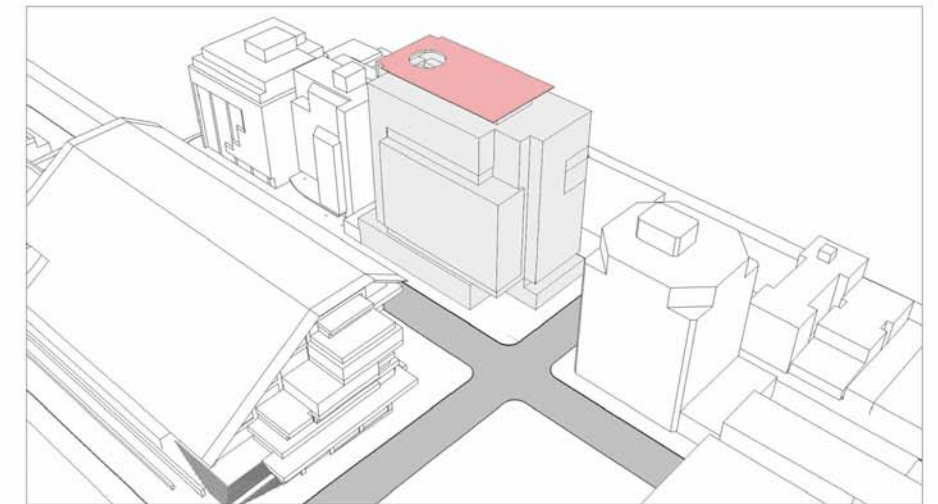
(3) Street-level retail elements are separated from the tower (in green)  
Stepped corner at upper levels and at street relate to massing of law courts (in red).



(4) Modeling refinements to align building faces with other building forms along Nelson.



(5) Glazing varied (in colour, frit patterns, etc.) to articulate building massing.



(6) Addition of roof screen to mitigate overlook issues from surrounding towers, and provide appropriate profile within the view corridor/skyline, and to shade roof.