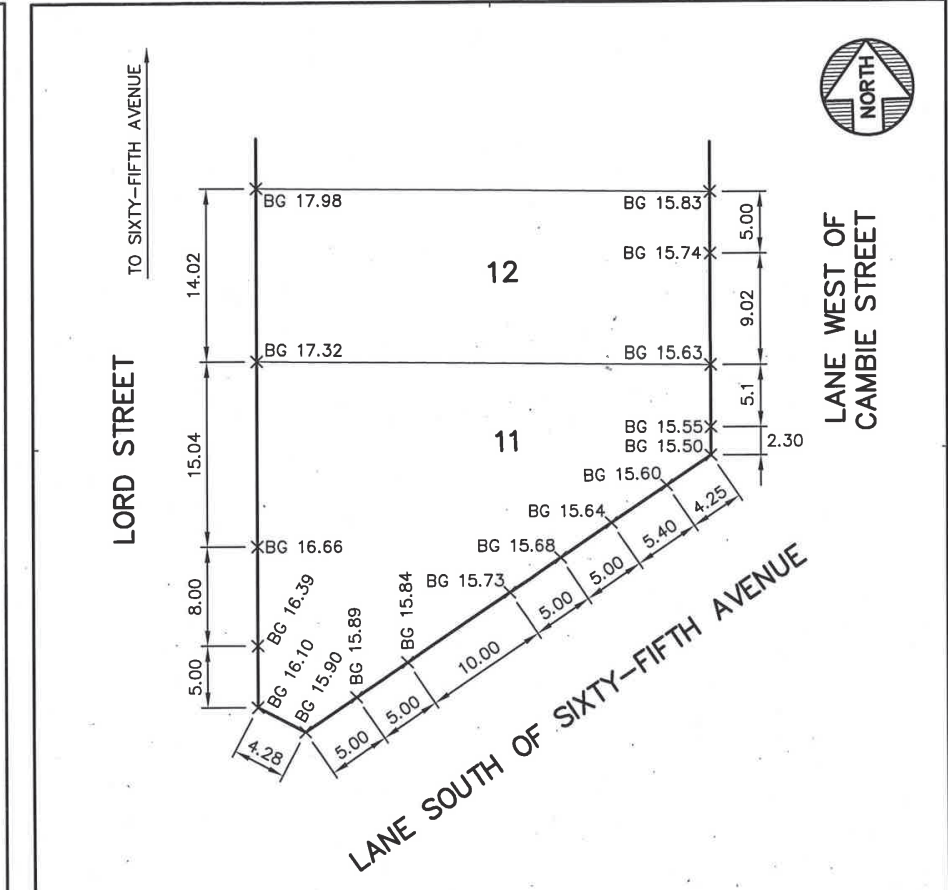


BENCH MARK: ELEVATION: 16.692 DESCRIPTION: SURVEY MONUMENT MARKED V-1293 AT THE SOUTH WEST CORNER OF SIXTY-FIFTH AVENUE AND CAMBIE STREET.
THE CITY OF VANCOUVER ASSUMES NO RESPONSIBILITY FOR PROPERTY DIMENSIONS ON THIS PLAN.

ATTENTION
ELEVATIONS SHOWN ON THIS PLAN ARE IN METRES BASED ON GVRD DATUM (ISSUED MARCH 31, 2005). DIMENSIONS ARE ALSO IN METRES.

NO.		DATE	REVISION	BY	CHK	CITY OF VANCOUVER ENGINEERING SERVICES	
1	2010-03-01		REVISED BUILDING GRADE ELEVATIONS AND DIMENSIONS ALONG CAMBIE STREET	DP	FG	BUILDING GRADE ELEVATIONS FOR LOTS A & 7AMD., BLK. X, D.L. 311, PLAN 20305.	
						DATE: 2008-01-29	DESIGN: D.P.
						DWG: C.A.	CHK: R.K.
						REF: FILE 070222, 100011 PPs 687, 751, 1152.	
						SCALE: 1:400	
						DWG. NO. BG 070222A	
						SHEET / OF	REVISION: 1



BENCH MARK ELEVATION: 25.164 DESCRIPTION: SURVEY MONUMENT MARKED V-2485 AT THE SOUTH EAST CORNER OF ASH STREET AND SIXTY-FIFTH AVENUE.

ATTENTION
ELEVATIONS SHOWN ON THIS PLAN ARE IN METRES BASED ON GVRD DATUM (ISSUED MARCH 31, 2005). DIMENSIONS ARE ALSO IN METRES.

NO.		DATE	REVISION	BY	CHK	CITY OF VANCOUVER ENGINEERING SERVICES	
						BUILDING GRADE ELEVATIONS FOR LOT 11 AND 12, BLK. 1 AND 2, D.L. 311, PLAN 8548.	
						SCALE: 1:400	
						DWG. NO. BG 100012	
						DATE: 2010-03-11	DESIGN: F.G. DWG: E.S.
						REF: FILE 070224, BG 070224	CHK: D.P. REV:

