

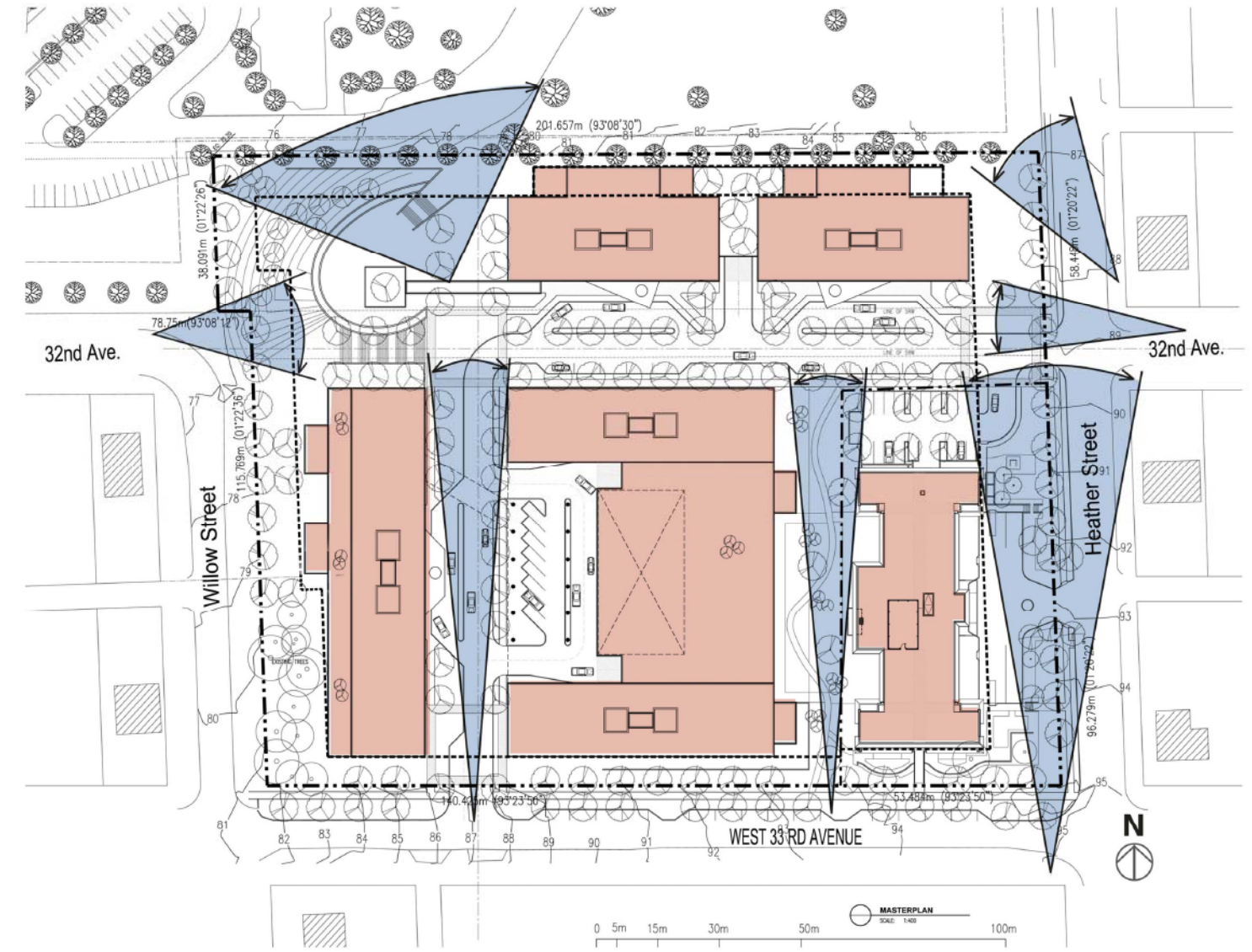
**CURRENT JP11 PROPOSAL DOES NOT ALTER 2008 CD-1 (82) REZONING APPLICATION "SITE VIEWS"**

REZONING REPORT

**4.9 VIEWS**

The proposed form of development will have a minimal effect on views of the North Shore mountains from private residences.

It is recognized that the RCMP site redevelopment may take place in the future. The view along 33rd. was interrupted by the previous 6 storey hospital on the St. Vincent's Heather site. The new campus of care will maintain some of the previous views and will improve views to the North East, due to the lower 4 storey Assisted Care Project.



View Diagram

Catholic Charities  
**JOHN PAUL II PASTORAL CENTRE**  
 749 W 33rd St. Vancouver, B.C.



This drawing is an instrument of service and shall remain the property of John Clark Architect, Inc. (JCA). This drawing and the contents hereof are confidential and shall not be disclosed or distributed to any third party without the written approval of John Clark Architect, Inc. (JCA).

Project Number: 09-749  
 Issued For: RE-ZONING/DP APP.  
 Date: 09/14/12

IBI GROUP / HENRIQUEZ • PARTNERS  
 Architects in Joint Venture  
 in collaboration with  
 Neil MacConnell MAIBC MRAIC  
 Providence Health Care Planning & Redevelopment

VIEW ANALYSIS