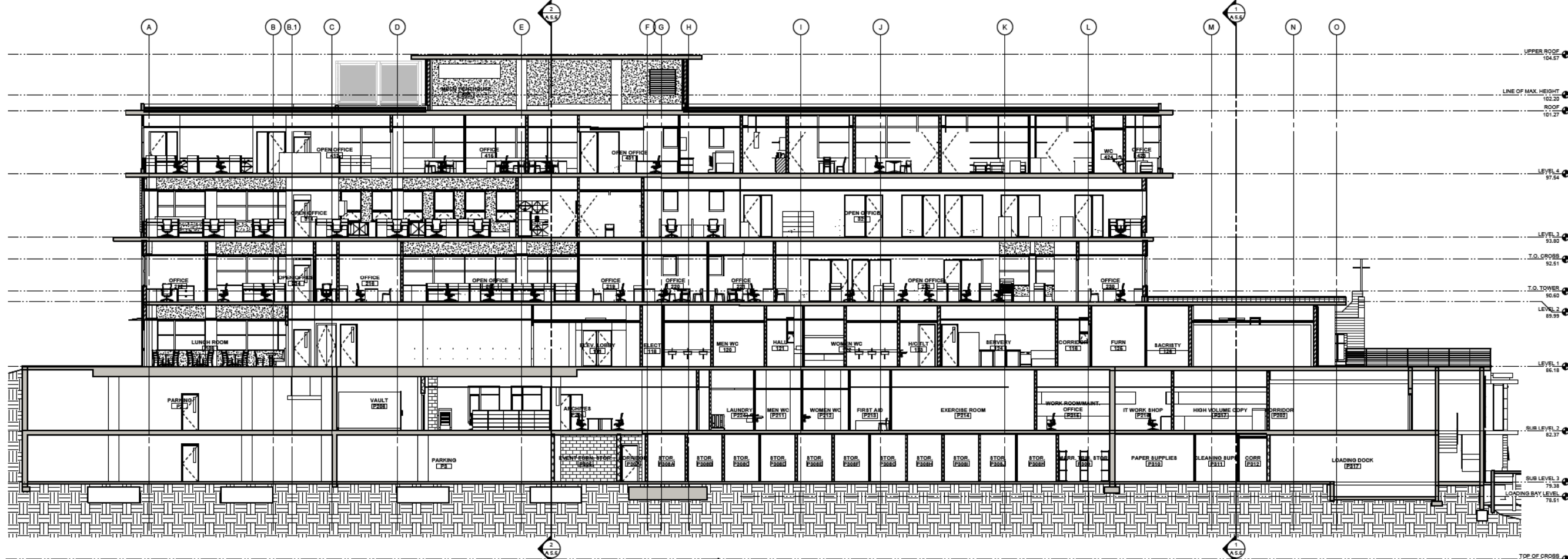
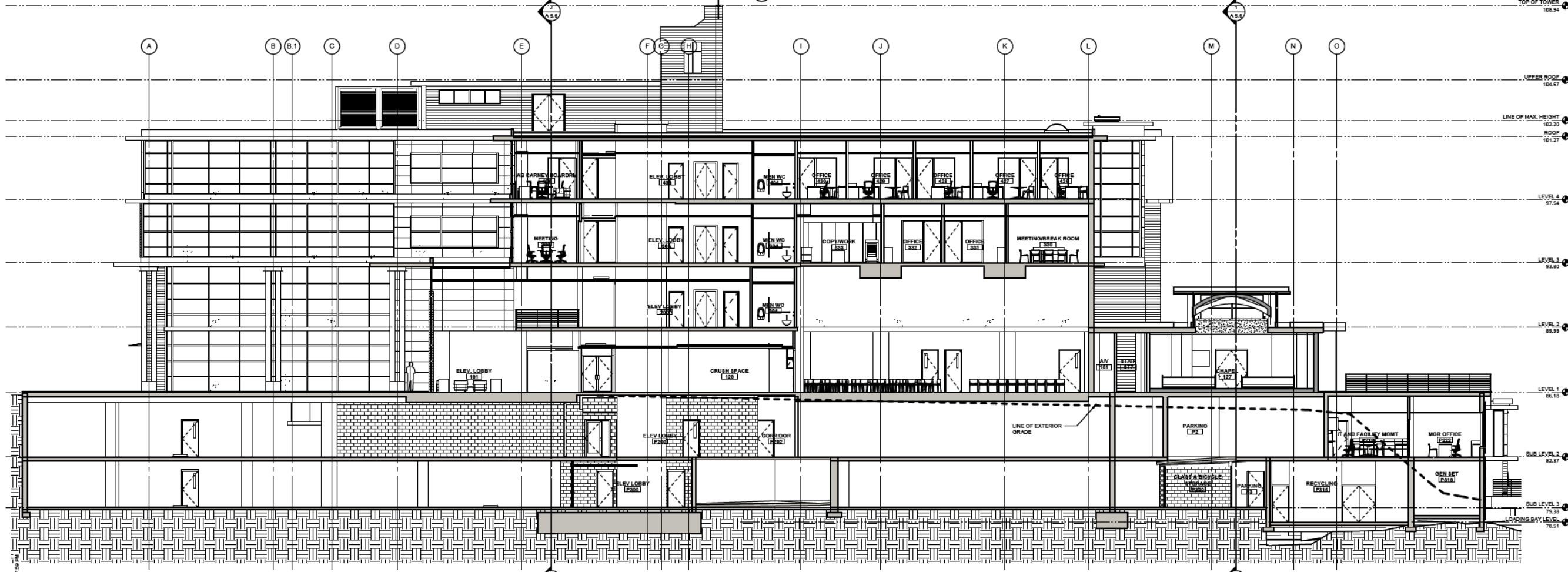


NOTE: THESE DOCUMENTS ARE A PRELIMINARY SET TOWARDS FINAL CONSTRUCTION DOCUMENTS. BY THEIR NATURE, THEY ARE INCOMPLETE. THEY ARE NOT SUITABLE FOR BIDDING OR CONSTRUCTION. ANY ATTEMPT TO ESTABLISH CONSTRUCTION COSTS FROM THESE DOCUMENTS MUST BE DONE WITH EXTREME CAUTION. COST ALLOWANCES MUST BE PROVIDED FOR DESIGN ELEMENTS AND MATERIALS NOT YET SHOWN ON THESE DOCUMENTS.

DRAWINGS NOT VALID WITHOUT LICENSED PROFESSIONAL SEAL



SECTION 1
 1/8" = 1'-0"



SECTION 2
 1/8" = 1'-0"

UPPER ROOF 104.57
 LINE OF MAX. HEIGHT 102.20
 ROOF 101.27
 LEVEL 4 97.54
 LEVEL 3 93.80
 T.O. CROSS 92.51
 T.O. TOWER 90.80
 LEVEL 2 89.99
 LEVEL 1 86.18
 SUB LEVEL 2 82.37
 SUB LEVEL 3 79.38
 LANDING BAY LEVEL 78.51
 TOP OF CROSS 110.69
 TOP OF TOWER 108.94
 UPPER ROOF 104.57
 LINE OF MAX. HEIGHT 102.20
 ROOF 101.27
 LEVEL 4 97.54
 LEVEL 3 93.80
 LEVEL 2 89.99
 LEVEL 1 86.18
 SUB LEVEL 2 82.37
 SUB LEVEL 3 79.38
 LANDING BAY LEVEL 78.51

Catholic Charities
JOHN PAUL II PASTORAL CENTRE
 749 W 33rd St. Vancouver, B.C.



This drawing is an instrument of service and shall remain the property of John Clark Architect Inc. (JCA). This drawing and the contents hereof shall not be used for any other project without the written approval of JCA. All rights reserved. © 2014 John Clark Architect Inc.

Project Number: 09-748
 Issued For: RE-ZONING/DP APP.
 Date: 09/14/12

Revision: _____ Date: _____

BUILDING SECTIONS

A
 5.5

9/14/2012 07:59 PM

NOTE: THESE DOCUMENTS ARE A PROGRESS SET TOWARDS FINAL CONSTRUCTION DOCUMENTS. BY THEIR NATURE, THEY ARE INCOMPLETE. THEY ARE NOT SUITABLE FOR BIDDING OR CONSTRUCTION. ANY ATTEMPT TO ESTABLISH CONSTRUCTION COSTS FROM THESE DOCUMENTS MUST BE DONE WITH EXTREME CAUTION. COST ALLOWANCES MUST BE PROVIDED FOR DESIGN ELEMENTS AND MATERIALS NOT YET INDICATED ON THESE DOCUMENTS. JOHN CLARK ARCHITECT, INC. AND OUR CONSULTANTS HAVE NO RESPONSIBILITY OR LIABILITY FOR COSTS OF CONSTRUCTION ASSOCIATED WITH DESIGN ELEMENTS AND MATERIALS NOT YET SHOWN ON THESE DOCUMENTS.

DRAWINGS NOT VALID WITHOUT LICENSED PROFESSIONAL SEAL

Catholic Charities
JOHN PAUL II PASTORAL CENTRE
 749 W 33rd St. Vancouver, B.C.

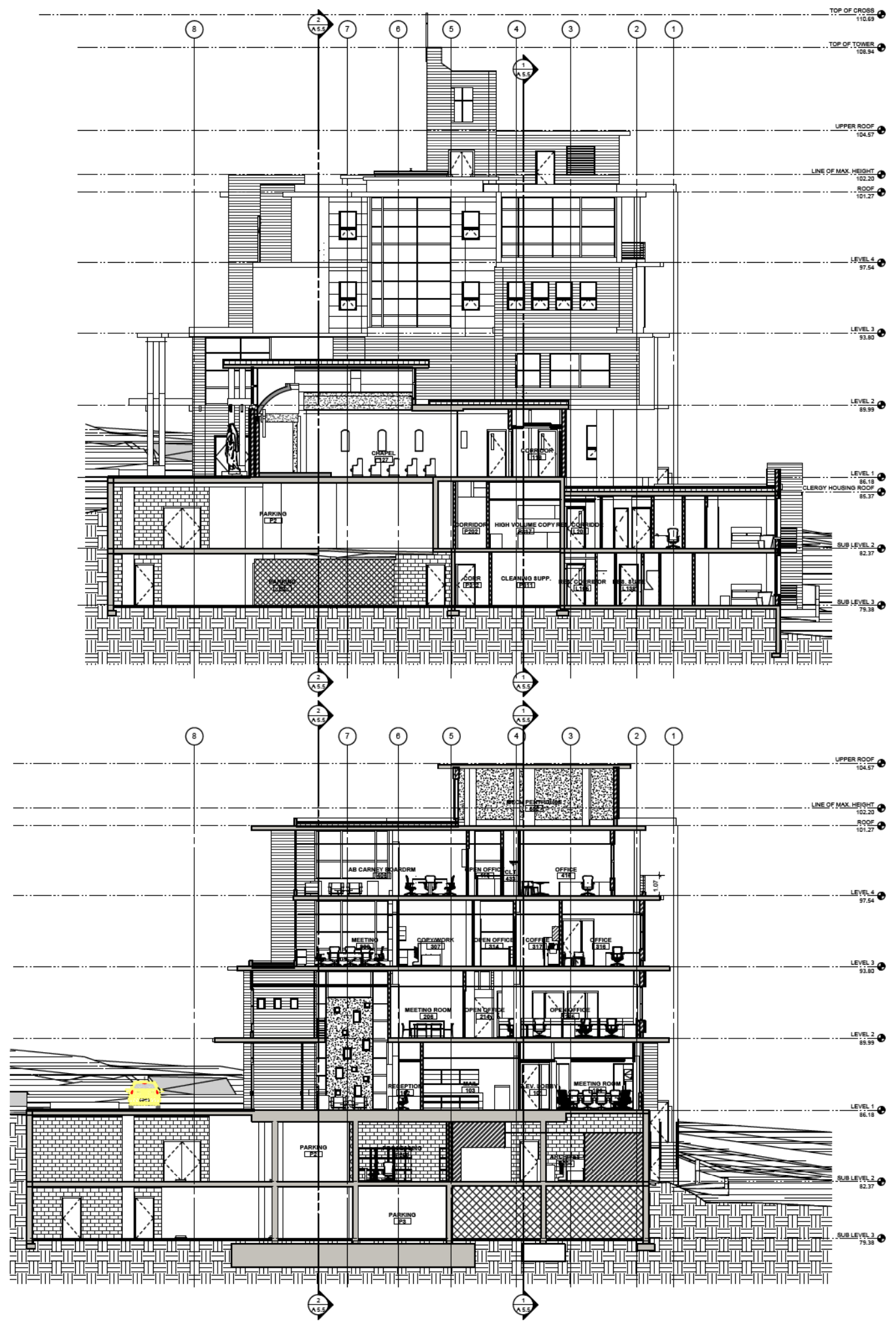


This drawing is an instrument of service and shall remain the property of John Clark Architect, Inc. (JCA). This drawing and the contents hereof are confidential and shall not be disclosed or reproduced in any form without the written approval of John Clark Architect, Inc. (JCA).

Project Number: 09-748
 Issued For: RE-ZONING/DP APP.
 Date: 09/14/12
 Revision: _____ Date: _____

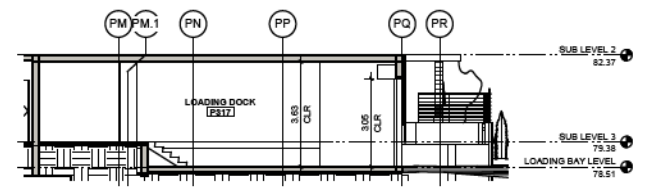
BUILDING SECTIONS

A
5.6



1 SECTION 3
 A 5.6 1:98

2 SECTION 4
 A 5.6 1:98



3 SECTION @ LOADING DOCK P317
 A 5.6 1:98

9/14/2012 10:42 PM