

CURRENT JP11 PROPOSAL DOES NOT ALTER 2008 CD-1 (82) REZONING APPLICATION " OPEN SPACES"

REZONING REPORT

4.7 OPEN SPACES

The project's buildings are arranged around two organizing mews:

1. An East-West pedestrian and vehicular mews on the 32nd Ave. alignment.
2. A North-South pedestrian and vehicular mews

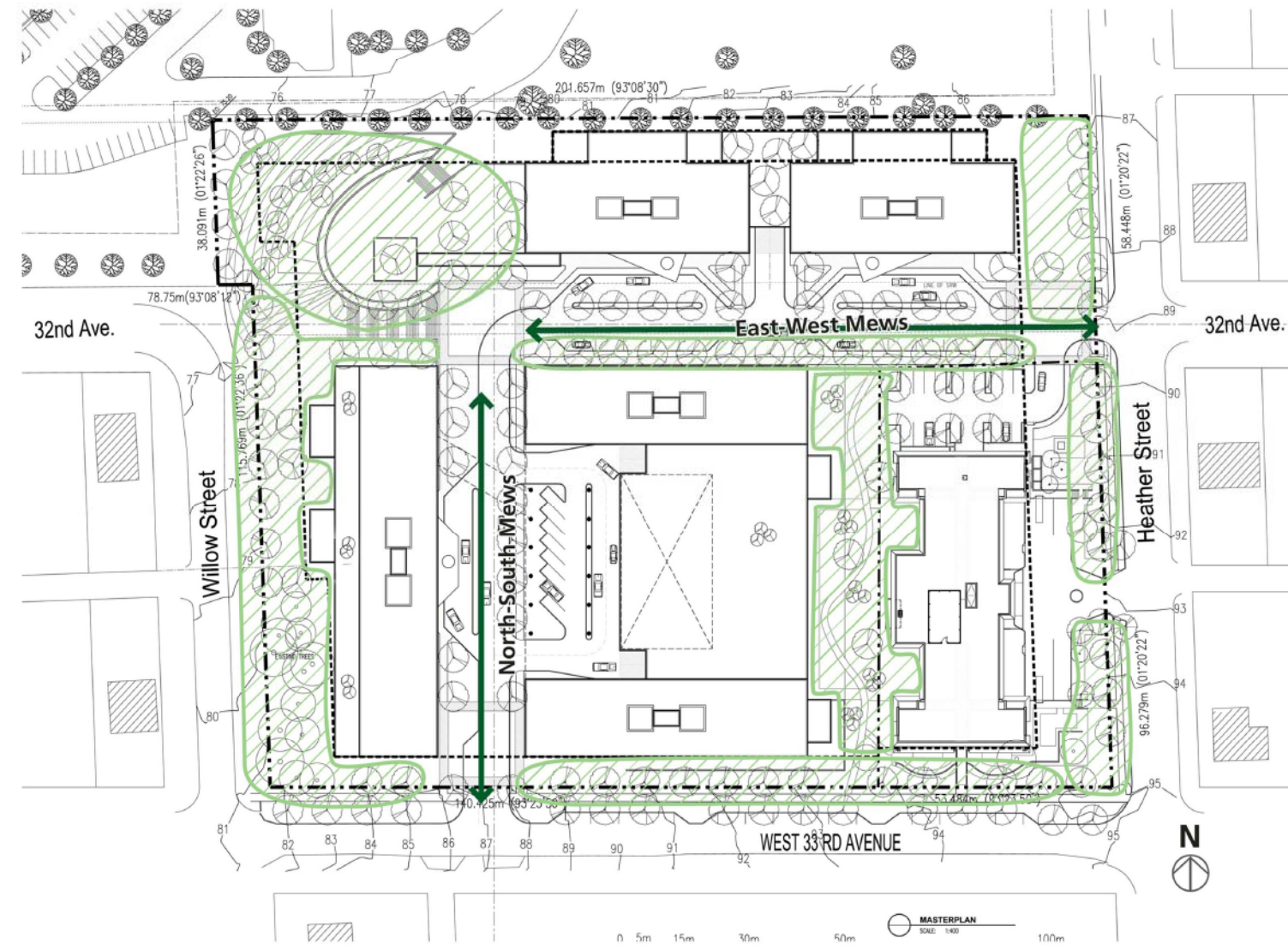
Open spaces will be characterized by:

- A variety of scales, locations and orientations, to provide varied outdoor activities and experiences for residents.
- Terraces
- Gardens on the podiums of buildings, to provide outdoor open space immediately accessible from indoor common spaces and shelter from elements with sun access. Resident gardening will be a popular activity.

4.8 LANDSCAPING

It is the intention to preserve as much of the mature planting as possible. The mews will be reinforced with a canopy of trees on both sides.

The site set-back will be landscaped, and will include existing, mature trees.



Open Space Diagram

Catholic Charities
JOHN PAUL II PASTORAL CENTRE
 749 W 33rd St. Vancouver, B.C.



This drawing is an instrument of service and shall remain the property of John Clark Architect, Inc. (JCA). This drawing and the contents hereof shall not be used for any other project without the written approval of JCA. © Copyright 2012 JCA.

Project Number: 09-749
 Issued For: RE-ZONING/DP APP.
 Date: 09/14/12

IBI GROUP / HENRIQUEZ • PARTNERS
 Architects in Joint Venture
 in collaboration with
 Neil MacConnell MAIBC MRAIC
 Providence Health Care Planning & Redevelopment

OPEN SPACE ANALYSIS