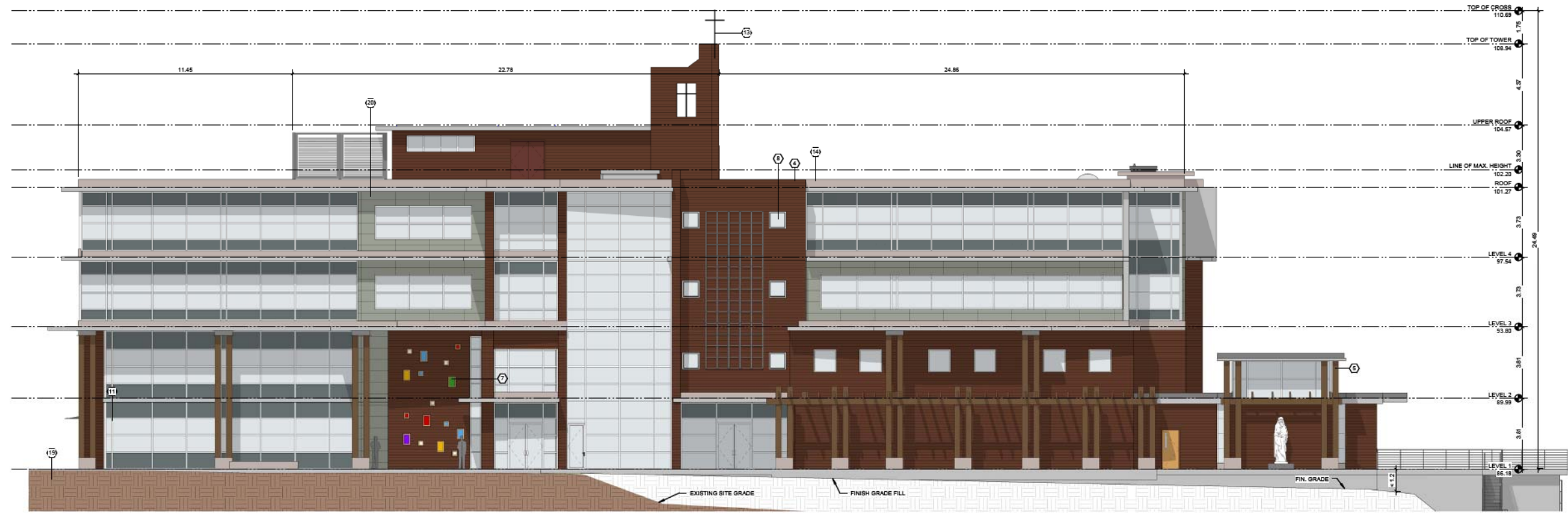
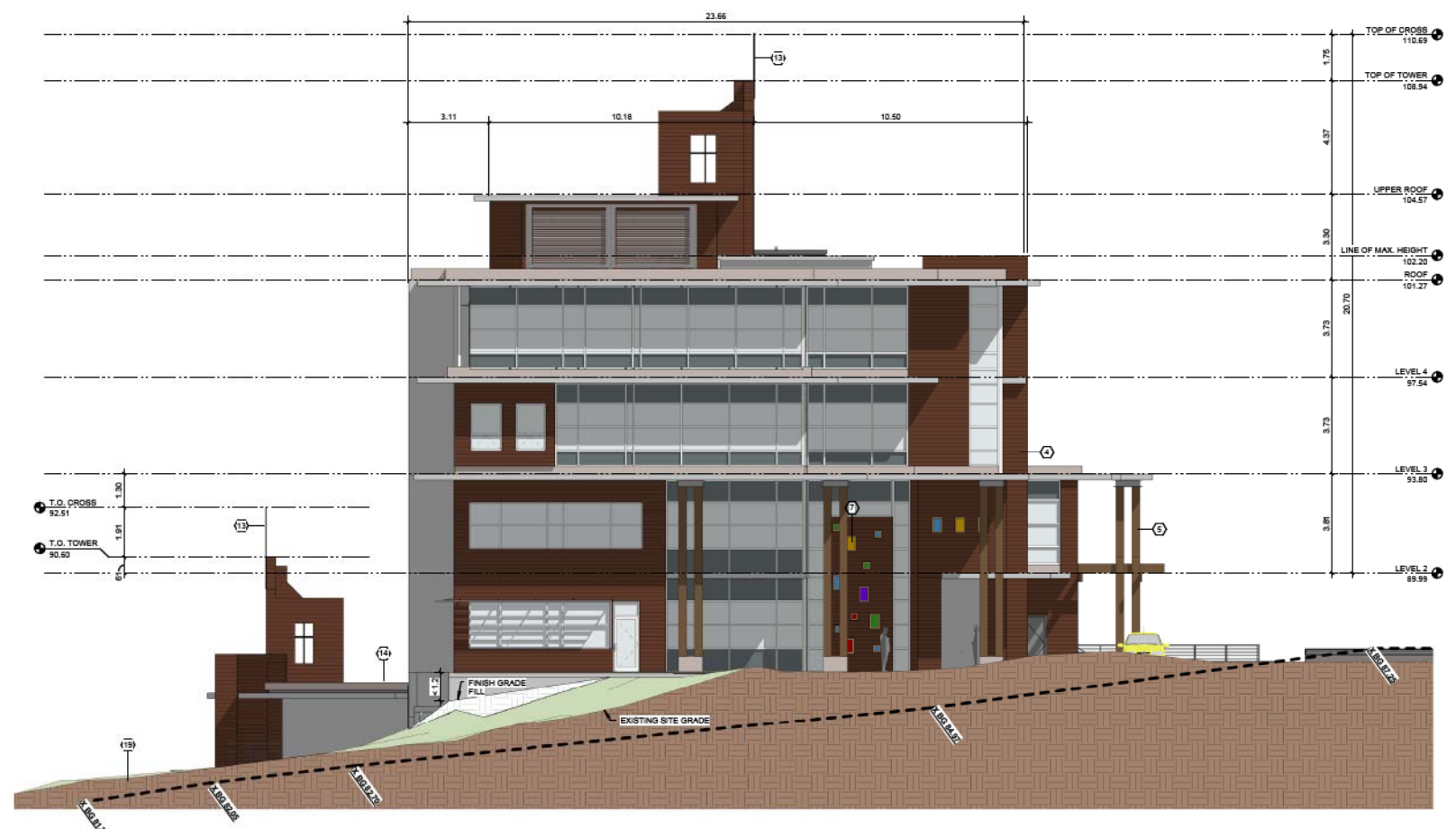


\*NOTE: THESE DOCUMENTS ARE A PROGRESS SET TOWARDS FINAL CONSTRUCTION DOCUMENTS. BY THEIR NATURE, THEY ARE INCOMPLETE. THEY ARE NOT SUITABLE FOR BIDDING OR CONSTRUCTION. ANY ATTEMPT TO ESTABLISH CONSTRUCTION COSTS FROM THESE DOCUMENTS MUST BE DONE WITH EXTREME CAUTION. COST ALLOWANCES MUST BE PROVIDED FOR DESIGN ELEMENTS AND MATERIALS NOT YET INDICATED ON THESE DOCUMENTS. JOHN CLARK ARCHITECT, INC. AND OUR CONSULTANTS HAVE NO RESPONSIBILITY OR LIABILITY FOR COSTS OF CONSTRUCTION ASSOCIATED WITH DESIGN ELEMENTS AND MATERIALS NOT YET SHOWN ON THESE DOCUMENTS.



1 EAST ELEVATION  
 A5.0 1:90



2 SOUTH ELEVATION  
 A5.0 1:90

ELEVATION KEYNOTE LEGEND	
KEY #	DESCRIPTION
1	HIGH PERFORMANCE GLAZING IN ALUMINUM FRAME
3	BALCONY GLAZING IN ALUMINUM GUARDRAIL
4	METAL PANEL TYPE 1
5	WOOD COLUMNS
7	COLORLED GLASS IN FIXED ALUMINUM FRAME
8	HIGH PERFORMANCE GLAZING IN FIXED ALUMINUM FRAME
11	HORIZONTAL ALUMINUM SUNSCREEN
13	CRUCIFIX
14	8" CONCRETE CURB
16	CONCRETE WALL
17	PAINTED METAL GUARDRAIL
18	VERTICAL TRELLIS
19	GRADE
20	CONCRETE COMPOSITION BOARD

Catholic Charities  
**JOHN PAUL II PASTORAL CENTRE**  
 749 W 33rd St. Vancouver, B.C.



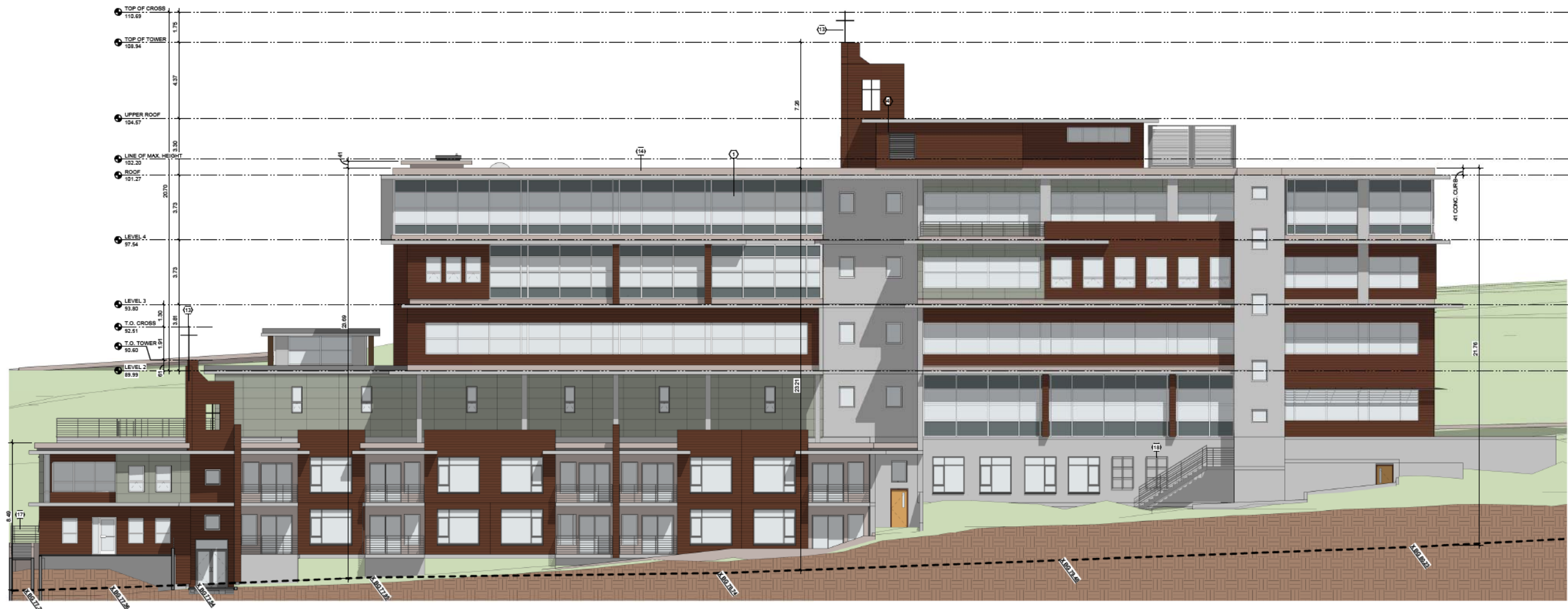
This drawing is an instrument of service and shall remain the property of John Clark Architect, Inc. (JCA). This drawing and the contents hereof are confidential and shall not be disclosed or reproduced in any form without the prior written approval of John Clark Architect, Inc. (JCA).  
 Project Number: 09-749  
 Issued For: RE-ZONING/DP APP.  
 Date: 09/14/12  
 Revision: \_\_\_\_\_ Date: \_\_\_\_\_

EAST, SOUTH  
 EXTERIOR  
 ELEVATIONS

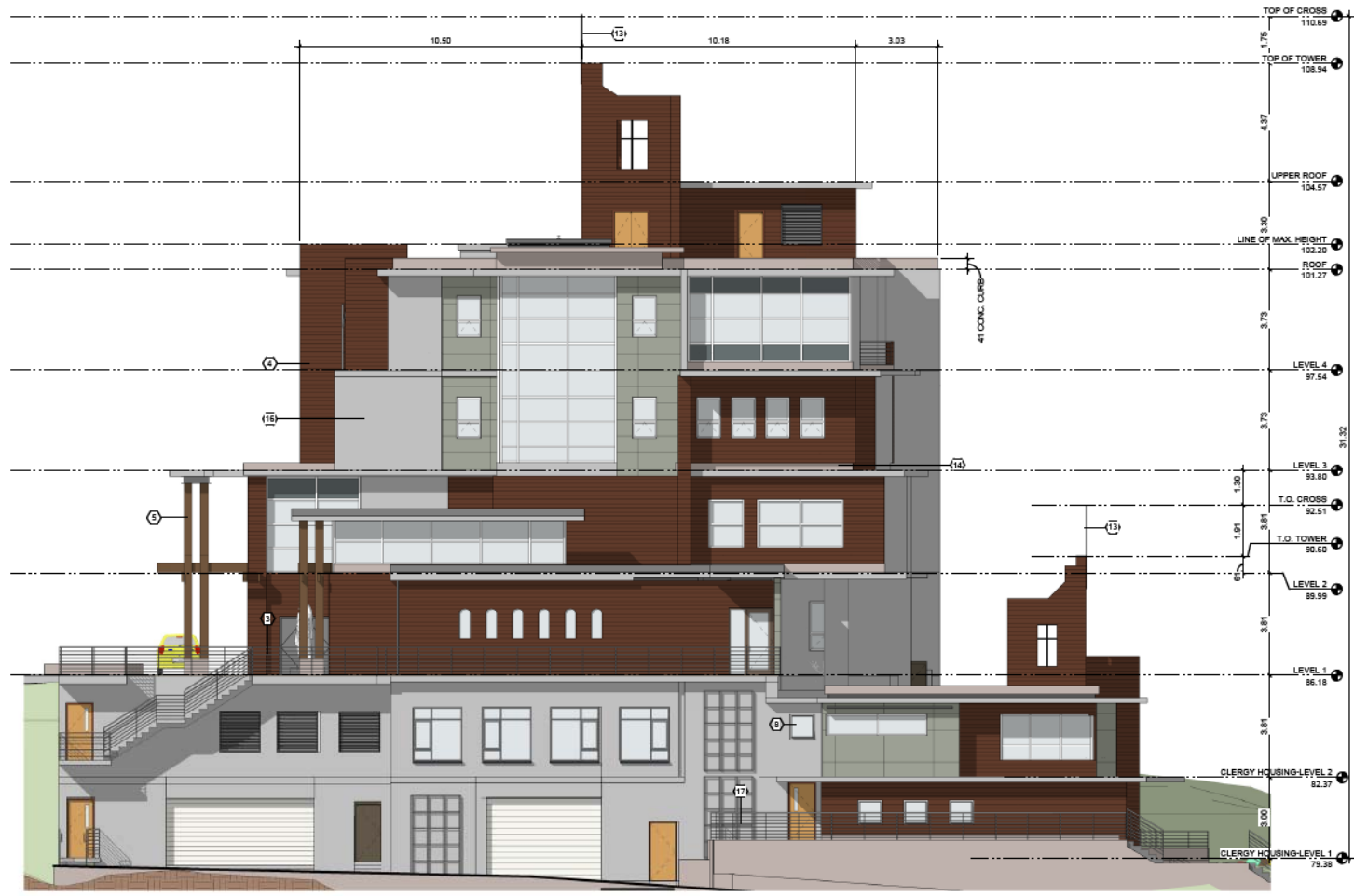
A  
 5.0

NOTE: THESE DOCUMENTS ARE A PRELIMINARY SET TOWARDS FINAL CONSTRUCTION DOCUMENTS. BY THEIR NATURE, THEY ARE INCOMPLETE. THEY ARE NOT SUITABLE FOR BIDDING OR CONSTRUCTION. ANY ATTEMPT TO ESTABLISH CONSTRUCTION COSTS FROM THESE DOCUMENTS MUST BE DONE WITH EXTREME CAUTION. COST ALLOWANCES MUST BE PROVIDED FOR DESIGN ELEMENTS AND MATERIALS NOT YET INDICATED ON THESE DOCUMENTS. JOHN CLARK ARCHITECT, INC. AND OUR CONSULTANTS HAVE NO RESPONSIBILITY OR LIABILITY FOR COSTS OF CONSTRUCTION ASSOCIATED WITH DESIGN ELEMENTS AND MATERIALS NOT YET SHOWN ON THESE DOCUMENTS.

DRAWINGS NOT VALID WITHOUT LICENSED PROFESSIONAL SEAL



1 WEST ELEVATION  
 A16.1 1:50



2 NORTH ELEVATION  
 A16.1 1:50

ELEVATION KEYNOTE LEGEND	
KEY #	DESCRIPTION
1	HIGH PERFORMANCE GLAZING IN ALUMINUM FRAME
3	BALCONY GLAZING IN ALUMINUM GUARDRAIL
4	METAL PANEL TYPE 1
5	WOOD COLUMNS
7	COLORLED GLASS IN FIXED ALUMINUM FRAME
8	HIGH PERFORMANCE GLAZING IN FIXED ALUMINUM FRAME
11	HORIZONTAL ALUMINUM SUNSCREEN
13	CRUCIFIX
14	8" CONCRETE CURB
16	CONCRETE WALL
17	PAINTED METAL GUARDRAIL
18	VERTICAL TRELLIS
19	GRADE
20	CONCRETE COMPOSITION BOARD

Catholic Charities  
**JOHN PAUL II PASTORAL CENTRE**  
 749 W 33rd St. Vancouver, B.C.



This drawing is an instrument of service and shall remain the property of John Clark Architect, Inc. (JCA). This drawing and the contents hereof are confidential and shall not be disclosed or reproduced in any form without the written approval of John Clark Architect, Inc. (JCA).

Project Number: 09-749  
 Issued For: RE-ZONING/APP.  
 Date: 09/14/12

Revision	Date

WEST, NORTH  
 EXTERIOR  
 ELEVATIONS

A  
 5.1