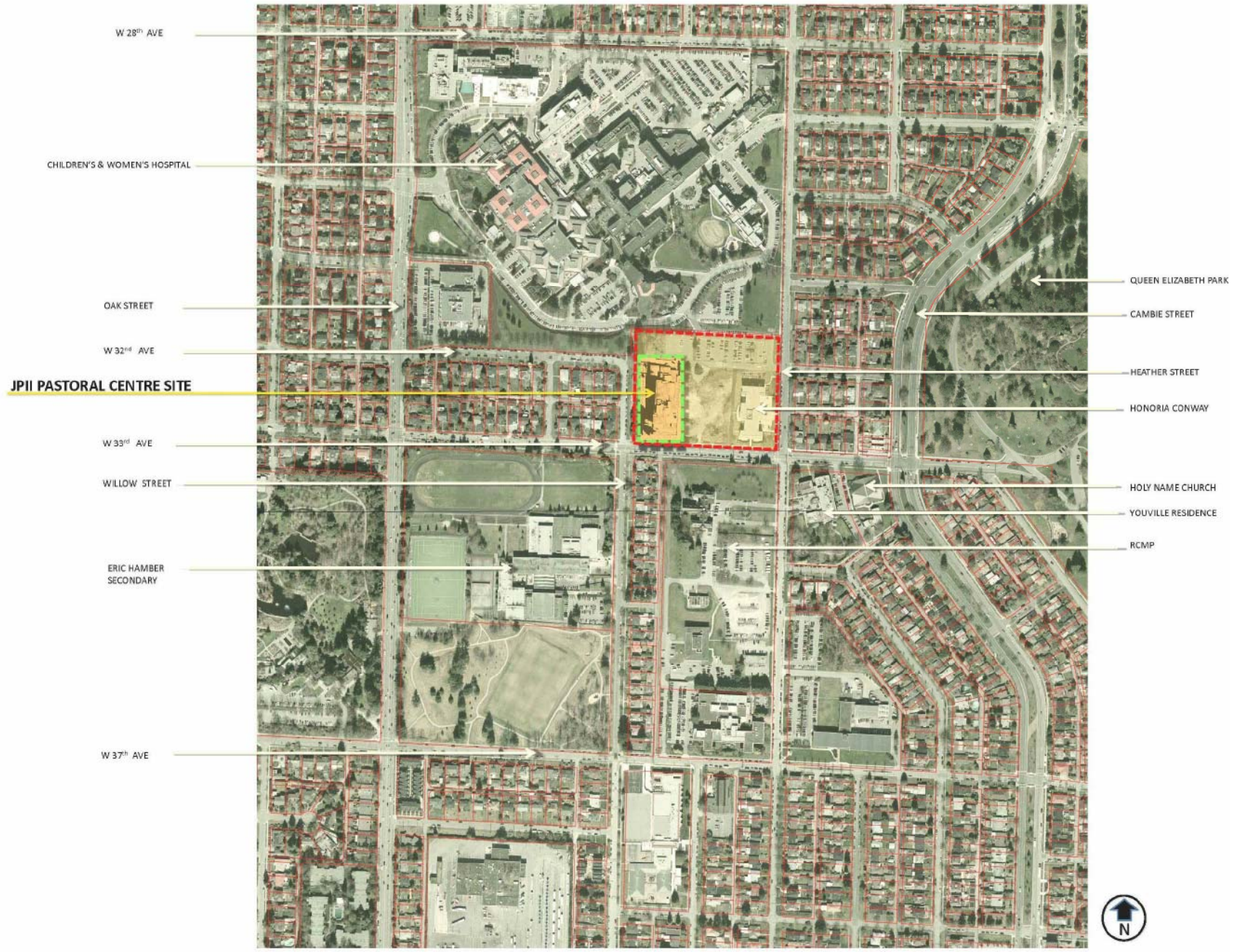
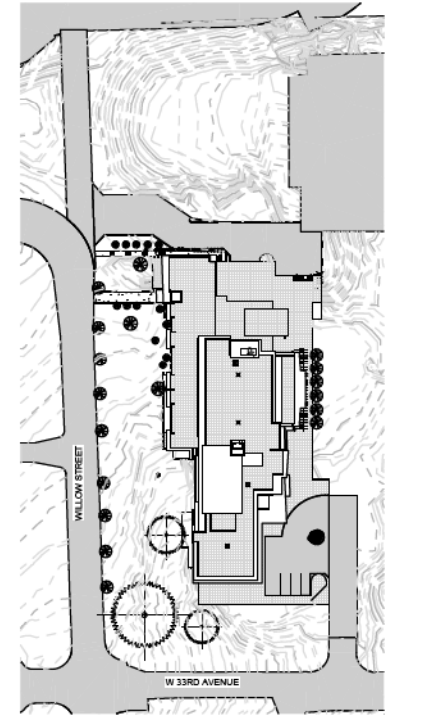


*NOTE: THESE DOCUMENTS ARE A PROGRESS SET TOWARDS FINAL CONSTRUCTION DOCUMENTS. BY THEIR NATURE, THEY ARE INCOMPLETE. THEY ARE NOT SUITABLE FOR BIDDING OR CONSTRUCTION. ANY ATTEMPT TO ESTIMATE CONSTRUCTION COSTS FROM THESE DOCUMENTS MUST BE DONE WITH EXTREME CAUTION. COST ALLOWANCES MUST BE PROVIDED FOR DESIGN ELEMENTS AND MATERIALS NOT YET INDICATED ON THESE DOCUMENTS. JOHN CLARK ARCHITECT, INC. AND OUR CONSULTANTS HAVE NO RESPONSIBILITY OR LIABILITY FOR COSTS OF CONSTRUCTION ASSOCIATED WITH DESIGN ELEMENTS AND MATERIALS NOT YET SHOWN ON THESE DOCUMENTS.

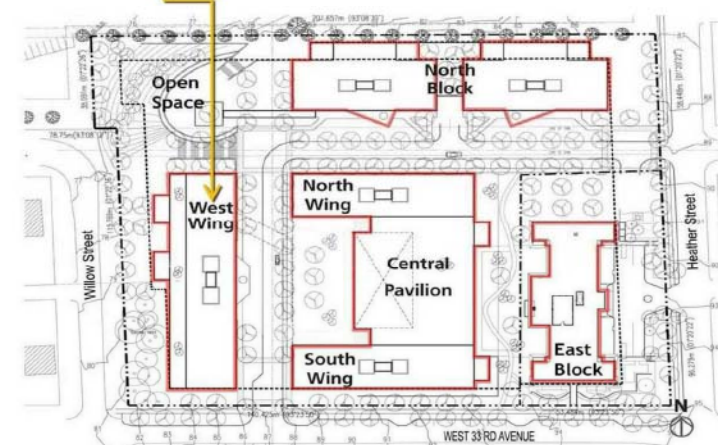
CONTEXT PLAN



KEY PLAN



ST. VINCENT'S CAMPUS MASTER PLAN



PROVIDENCE REZONING SITE PLAN
 2008 CD-1 (82) ST. VINCENT'S

Catholic Charities
JOHN PAUL II PASTORAL CENTRE
 749 W 33rd St. Vancouver, B.C.



This drawing is an instrument of service and shall remain the property of John Clark Architect, Inc. (JCA). This drawing and the contents hereof are confidential and shall not be disclosed or used for any other purpose without the written approval of JCA.

Project Number: 09-749
 Issued For: RE-ZONING/CD APP.
 Date: 09/14/12
 Revision: _____
 Date: _____

CONTEXT

A
0.3