

**IMPERIAL**  
THIS DRAWING IS COPYRIGHTED AND MUST NOT BE USED, REPRODUCED, OR REVISED WITHOUT WRITTEN PERMISSION. ALL DIMENSIONS ARE IN FEET AND INCHES UNLESS OTHERWISE NOTED.  
VERIFY DIMENSIONS.  
DO NOT SCALE THIS DRAWING.  
REPORT INCONSISTENCIES AND OMISSIONS TO THE CONSULTANT FOR CLARIFICATION BEFORE COMMENCING WITH THE WORK.  
DEVIATIONS FROM THE CONTRACT DOCUMENTS WITHOUT WRITTEN APPROVAL FROM THE CONSULTANT ARE SUBJECT TO CORRECTION AT THE CONTRACTOR'S EXPENSE.

**ARCHITECT & PRIME CONSULTANT**  
DIALOG BC ARCHITECTURE ENGINEERING  
INTERIOR DESIGN PLANNING INC.  
406 - 611 ALEXANDER STREET  
VANCOUVER, BC, V6A 1E1  
Tel: (604) 255-1169 Fax: (604) 255-1790

**INTERIOR DESIGN**  
DIALOG BC ARCHITECTURE ENGINEERING  
INTERIOR DESIGN PLANNING INC.  
406 - 611 ALEXANDER STREET  
VANCOUVER, BC, V6A 1E1  
Tel: (604) 255-1169 Fax: (604) 255-1790  
design@designdialog.ca

**STRUCTURAL ENGINEER**  
READ JONES CHRISTOFFERSEN LTD  
SUITE 300, 1225 WEST BROADWAY  
VANCOUVER, BC V6H 3X8  
Tel: (604) 738-0048 Fax: (604) 788-1107

**MECHANICAL ENGINEER**  
INTEGRAL GROUP  
SUITE 180-200 GRANVILLE ST.  
VANCOUVER, BC V6C 1S4  
Tel: (604) 687-1807 Fax: (604) 687-1802

**ELECTRICAL ENGINEER**  
APPLIED ENGINEERING SOLUTIONS LTD.  
600 - 905 WEST FENDER STREET  
VANCOUVER, BC V6C 1L6  
Tel: (604) 569-6500 Fax: (604) 569-6501

SEAL

**VPL/YWCA**

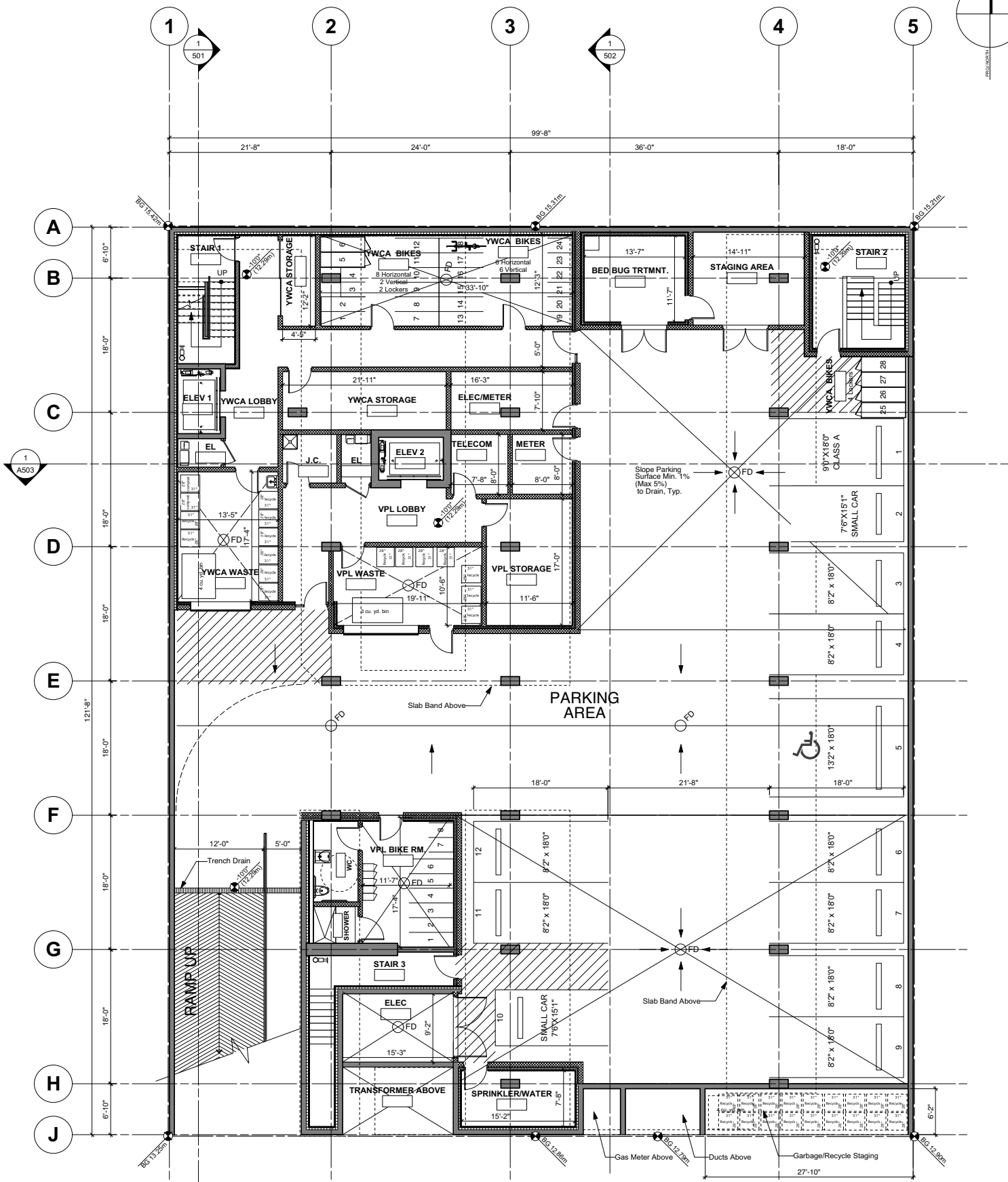
720 East Hastings Street

**Level P1  
Floor Plan**

DRAWN: AP  
PLOT DATE: 5/28/13

CHECKED: BH

**A201**



**Summary of Vehicle, Loading and Bicycle Parking Provided**

| VPL/YWCA Parking     | Reg       | Sm. Car   | Accessible Load Class A | Total     |
|----------------------|-----------|-----------|-------------------------|-----------|
| VPL/YWCA Parking     | 8         | 2         | 1                       | 12        |
| <b>Total Bicycle</b> |           |           |                         | <b>12</b> |
| Bicycle              | Class A   | Class B   |                         |           |
| VPL (Horizontal)     | 6*        | 6         |                         |           |
| VPL (Horizontal)     | 2*        |           |                         |           |
| YWCA (Vertical)      | 8         |           |                         |           |
| YWCA (Horizontal)    | 14        | 6         |                         |           |
| YWCA (Lockers)       | 6         |           |                         |           |
| <b>Total</b>         | <b>36</b> | <b>12</b> |                         |           |

Note: End of trip facilities provided. Includes, unisex shower rm. and WC  
\* 3 CLASS A STALLS REQ'D, 8 PROVIDED

Refer to Bunt & Associates Transportation Study for Further Detail

**P1 FLOOR PLAN**

SCALE: 1/8"=1'

1