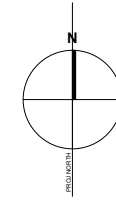
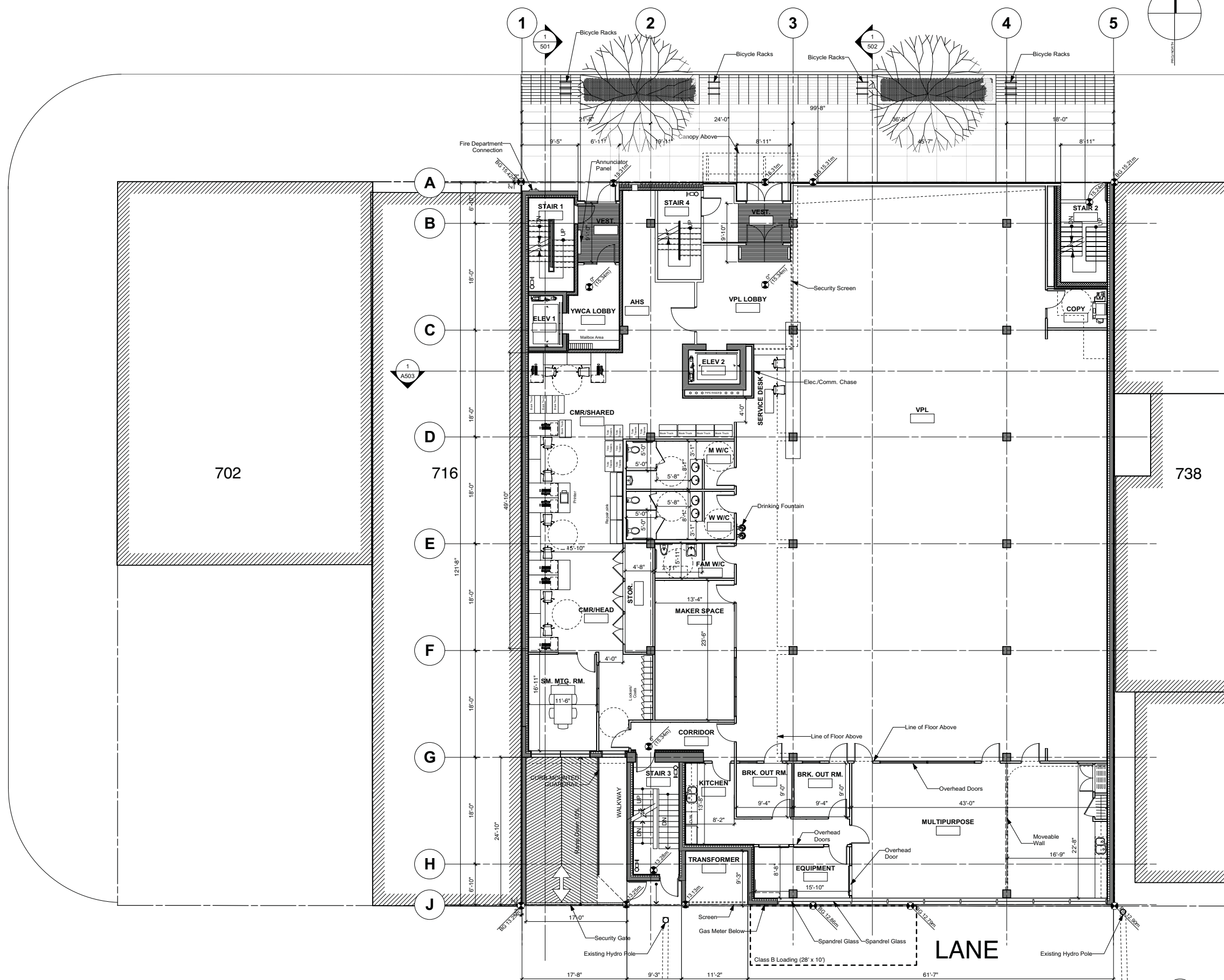


EAST HASTINGS STREET



HEATLEY AVENUE



NOTE:
REFER TO LANDSCAPE DRAWINGS FOR LANDSCAPE DETAIL

LEVEL 01 FLOOR PLAN
SCALE: 1/8"=1'

ISSUED FOR
1 5/27/13 Rezoning/DPA

IMPERIAL
THIS DRAWING IS COPYRIGHTED AND MUST NOT BE USED, REPRODUCED, OR REVISED WITHOUT WRITTEN PERMISSION. ALL DIMENSIONS ARE IN FEET AND INCHES UNLESS OTHERWISE NOTED.
VERIFY DIMENSIONS.
DO NOT SCALE THIS DRAWING.
REPORT INCONSISTENCIES AND OMISSIONS TO THE CONSULTANT FOR CLARIFICATION BEFORE COMMENCING WITH THE WORK.
DEVIATIONS FROM THE CONTRACT DOCUMENTS WITHOUT WRITTEN APPROVAL FROM THE CONSULTANT ARE SUBJECT TO CORRECTION AT THE CONTRACTOR'S EXPENSE.

ARCHITECT & PRIME CONSULTANT
DIALOG BC ARCHITECTURE ENGINEERING
INTERIOR DESIGN PLANNING INC.
406 - 611 ALEXANDER STREET
VANCOUVER, BC, V6A 1E1
Tel: (604) 255-1169 Fax: (604) 255-1790

INTERIOR DESIGN
DIALOG BC ARCHITECTURE ENGINEERING
INTERIOR DESIGN PLANNING INC.
406 - 611 ALEXANDER STREET
VANCOUVER, BC, V6A 1E1
Tel: (604) 255-1169 Fax: (604) 255-1790
design@designdialog.ca

STRUCTURAL ENGINEER
READ JONES CHRISTOFFERSEN LTD
SUITE 300, 1285 WEST BROADWAY
VANCOUVER, BC V6H 3X8
Tel: (604) 738-0048 Fax: (604) 788-1107

MECHANICAL ENGINEER
INTEGRAL GROUP
SUITE 180-200 GRANVILLE ST.
VANCOUVER, BC V6C 1S4
Tel: (604) 687-1807 Fax: (604) 687-1802

ELECTRICAL ENGINEER
APPLIED ENGINEERING SOLUTIONS LTD.
600 - 905 WEST PENDER STREET
VANCOUVER, BC V6C 1L6
Tel: (604) 569-6500 Fax: (604) 569-6501

SEAL

VPL/YWCA
720 East Hastings Street

**Level 01
Floor Plan**
DRAWN: AP CHECKED: BH
PLOT DATE: 5/28/13

A202

ISSUED FOR

A 5/27/13 Rezoning/DPA

IMPERIAL

THIS DRAWING IS COPYRIGHTED AND MUST NOT BE USED, REPRODUCED, OR REVISED WITHOUT WRITTEN PERMISSION. ALL DIMENSIONS ARE IN FEET AND INCHES UNLESS OTHERWISE NOTED.

VERIFY DIMENSIONS.
DO NOT SCALE THIS DRAWING.
REPORT INCONSISTENCIES AND OMISSIONS TO THE CONSULTANT FOR CLARIFICATION BEFORE COMMENCING WITH THE WORK.
DEVIATIONS FROM THE CONTRACT DOCUMENTS WITHOUT WRITTEN APPROVAL FROM THE CONSULTANT ARE SUBJECT TO CORRECTION AT THE CONTRACTOR'S EXPENSE.

ARCHITECT & PRIME CONSULTANT

DIALOG BC ARCHITECTURE ENGINEERING
INTERIOR DESIGN PLANNING INC.
406 - 611 ALEXANDER STREET
VANCOUVER, BC, V6A 1E1
Tel: (604) 255-1169 Fax: (604) 255-1790

INTERIOR DESIGN

DIALOG BC ARCHITECTURE ENGINEERING
INTERIOR DESIGN PLANNING INC.
406 - 611 ALEXANDER STREET
VANCOUVER, BC, V6A 1E1
Tel: (604) 255-1169 Fax: (604) 255-1790
design@designdialog.ca

STRUCTURAL ENGINEER

READ JONES CHRISTOFFERSEN LTD
SUITE 300, 1285 WEST BROADWAY
VANCOUVER, BC V6H 3X8
Tel: (604) 738-0048 Fax: (604) 788-1107

MECHANICAL ENGINEER

INTEGRAL GROUP
SUITE 180-200 GRANVILLE ST.
VANCOUVER, BC V6C 1S4
Tel: (604) 687-1807 Fax: (604) 687-1802

ELECTRICAL ENGINEER

APPLIED ENGINEERING SOLUTIONS LTD.
600 - 905 WEST FENDER STREET
VANCOUVER, BC V6C 1L6
Tel: (604) 569-6500 Fax: (604) 569-6501

SEAL

VPL/YWCA

720 East Hastings Street

**Level 02
Floor Plan**

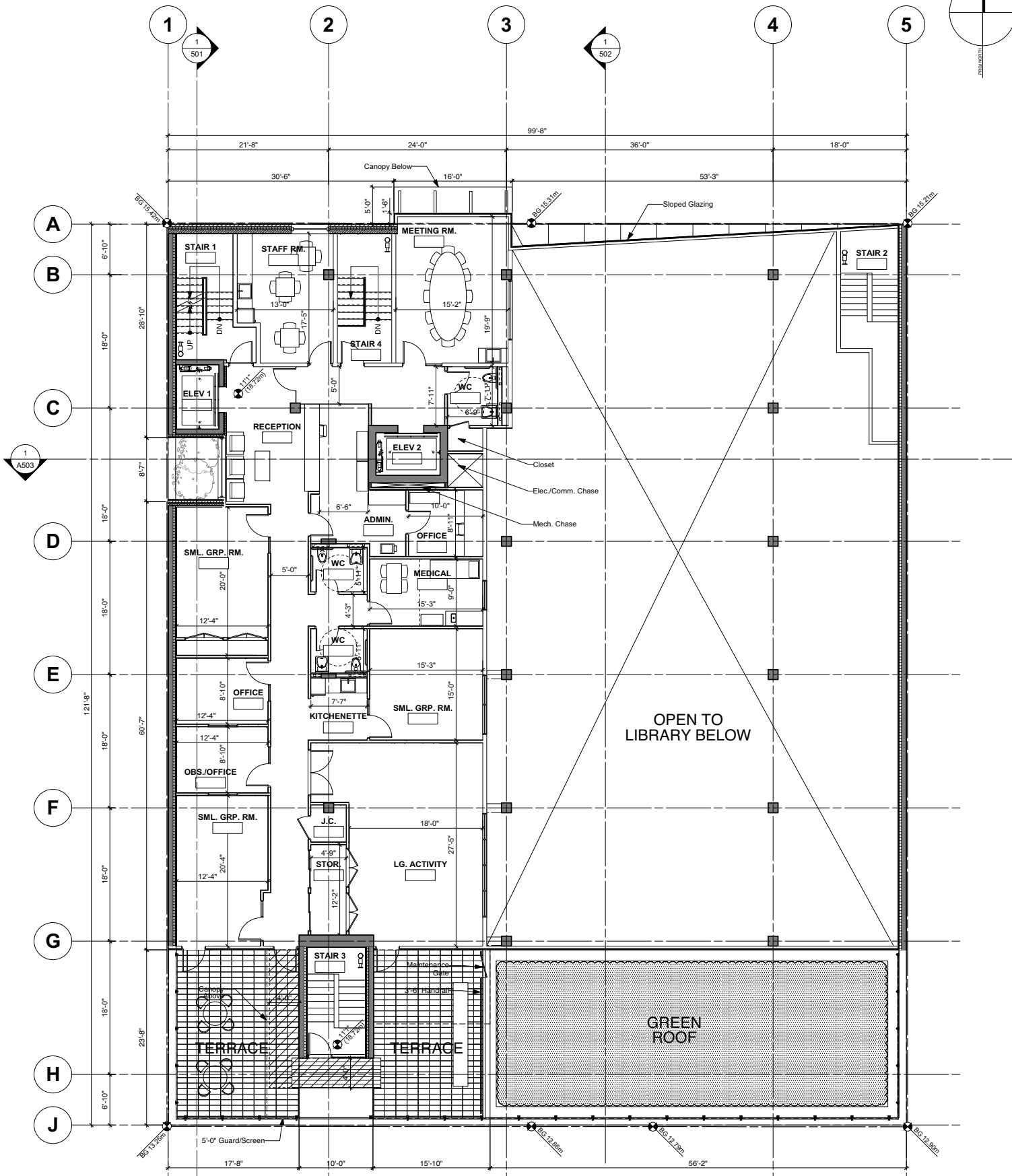
DRAWN: AP
PLOT DATE: 5/28/13

CHECKED: BH

A203

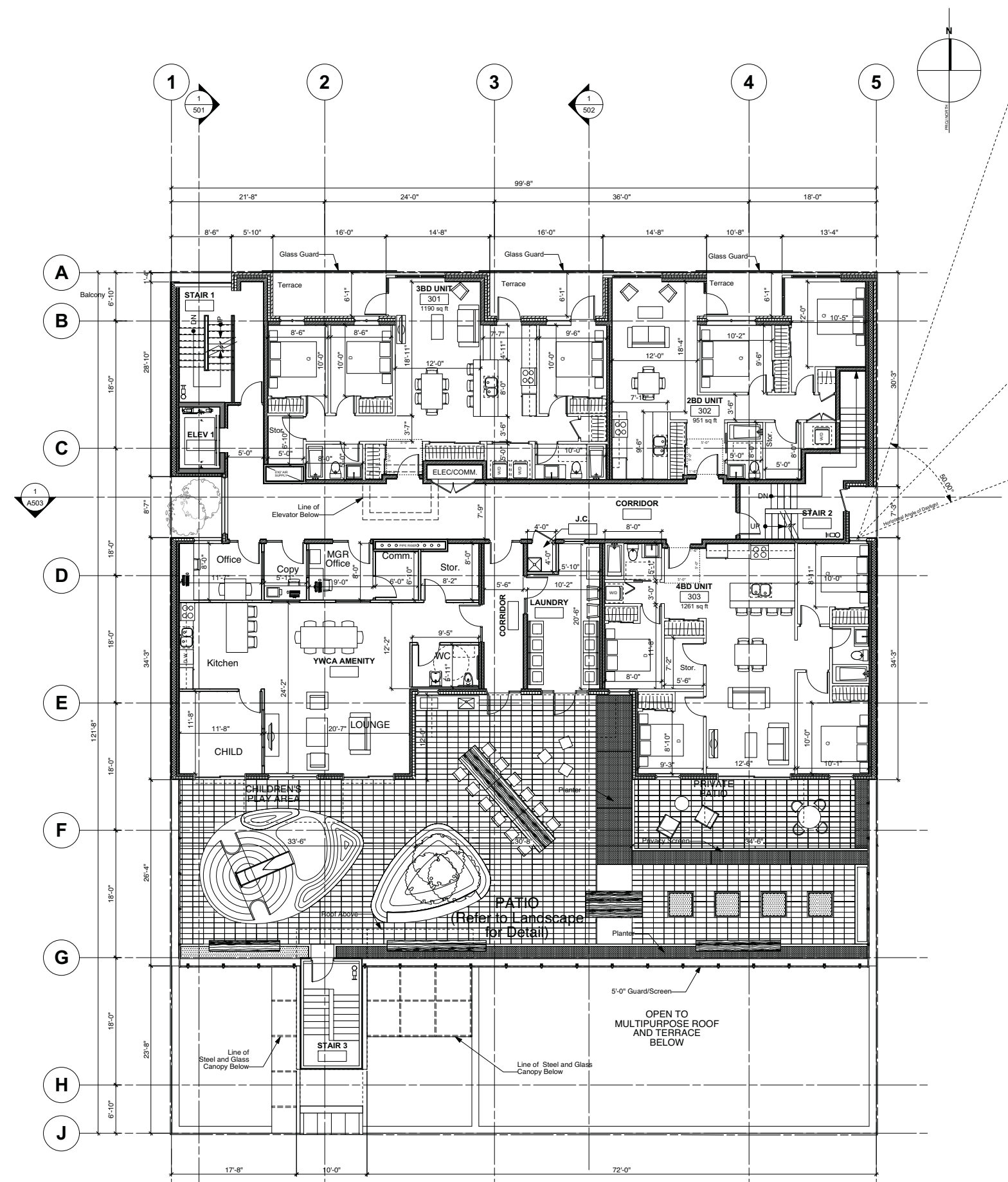
04106

04106_Plans.vwx



NOTE:
REFER TO LANDSCAPE DRAWINGS FOR LANDSCAPE DETAIL

LEVEL 02 FLOOR PLAN
SCALE: 1/8"=1' 1



NOTE:
REFER TO LANDSCAPE DRAWINGS FOR LANDSCAPE DETAIL

LEVEL 03 FLOOR PLAN
SCALE: 1/8"=1'
1

IMPERIAL
THIS DRAWING IS COPYRIGHTED AND MUST NOT BE USED, REPRODUCED, OR REVISED WITHOUT WRITTEN PERMISSION. ALL DIMENSIONS ARE IN FEET AND INCHES UNLESS OTHERWISE NOTED.
VERIFY DIMENSIONS.
DO NOT SCALE THIS DRAWING.
REPORT INCONSISTENCIES AND OMISSIONS TO THE CONSULTANT FOR CLARIFICATION BEFORE COMMENCING WITH THE WORK.
DEVIATIONS FROM THE CONTRACT DOCUMENTS WITHOUT WRITTEN APPROVAL FROM THE CONSULTANT ARE SUBJECT TO CORRECTION AT THE CONTRACTOR'S EXPENSE.

ARCHITECT & PRIME CONSULTANT
DIALOG BC ARCHITECTURE ENGINEERING
INTERIOR DESIGN PLANNING INC.
406 - 611 ALEXANDER STREET
VANCOUVER, BC, V6A 1E1
Tel: (604) 255-1169 Fax: (604) 255-1790

INTERIOR DESIGN
DIALOG BC ARCHITECTURE ENGINEERING
INTERIOR DESIGN PLANNING INC.
406 - 611 ALEXANDER STREET
VANCOUVER, BC, V6A 1E1
Tel: (604) 255-1169 Fax: (604) 255-1790
design@designdialog.ca

STRUCTURAL ENGINEER
READ JONES CHRISTOFFERSEN LTD
SUITE 300, 1285 WEST BROADWAY
VANCOUVER, BC V6H 3X8
Tel: (604) 738-0048 Fax: (604) 788-1107

MECHANICAL ENGINEER
INTEGRAL GROUP
SUITE 180-200 GRANVILLE ST.
VANCOUVER, BC V6C 1S4
Tel: (604) 687-1807 Fax: (604) 687-1802

ELECTRICAL ENGINEER
APPLIED ENGINEERING SOLUTIONS LTD.
600 - 905 WEST FENDER STREET
VANCOUVER, BC V6C 1L6
Tel: (604) 569-6500 Fax: (604) 569-6501

SEAL

VPLY/YWCA
720 East Hastings Street

**Level 03
Floor Plan**

DRAWN: AP CHECKED: BH
PLOT DATE: 5/28/13

A204

IMPERIAL
THIS DRAWING IS COPYRIGHTED AND MUST NOT BE USED, REPRODUCED, OR REVISED WITHOUT WRITTEN PERMISSION. ALL DIMENSIONS ARE IN FEET AND INCHES UNLESS OTHERWISE NOTED. VERIFY DIMENSIONS. DO NOT SCALE THIS DRAWING. REPORT INCONSISTENCIES AND OMISSIONS TO THE CONSULTANT FOR CLARIFICATION BEFORE COMMENCING WITH THE WORK. DEVIATIONS FROM THE CONTRACT DOCUMENTS WITHOUT WRITTEN APPROVAL FROM THE CONSULTANT ARE SUBJECT TO CORRECTION AT THE CONTRACTOR'S EXPENSE.

ARCHITECT & PRIME CONSULTANT
DIALOG BC ARCHITECTURE ENGINEERING
INTERIOR DESIGN PLANNING INC.
406 - 611 ALEXANDER STREET
VANCOUVER, BC, V6A 1E1
Tel: (604) 255-1169 Fax: (604) 255-1790

INTERIOR DESIGN
DIALOG BC ARCHITECTURE ENGINEERING
INTERIOR DESIGN PLANNING INC.
406 - 611 ALEXANDER STREET
VANCOUVER, BC, V6A 1E1
Tel: (604) 255-1169 Fax: (604) 255-1790
design@designdialog.ca

STRUCTURAL ENGINEER
READ JONES CHRISTOFFERSEN LTD
SUITE 300, 1285 WEST BROADWAY
VANCOUVER, BC V6H 3X8
Tel: (604) 738-0048 Fax: (604) 788-1107

MECHANICAL ENGINEER
INTEGRAL GROUP
SUITE 180-200 GRANVILLE ST.
VANCOUVER, BC V6C 1S4
Tel: (604) 687-1807 Fax: (604) 687-1802

ELECTRICAL ENGINEER
APPLIED ENGINEERING SOLUTIONS LTD.
600 - 905 WEST FENDER STREET
VANCOUVER, BC V6C 1L6
Tel: (604) 569-6500 Fax: (604) 569-6501

SEAL

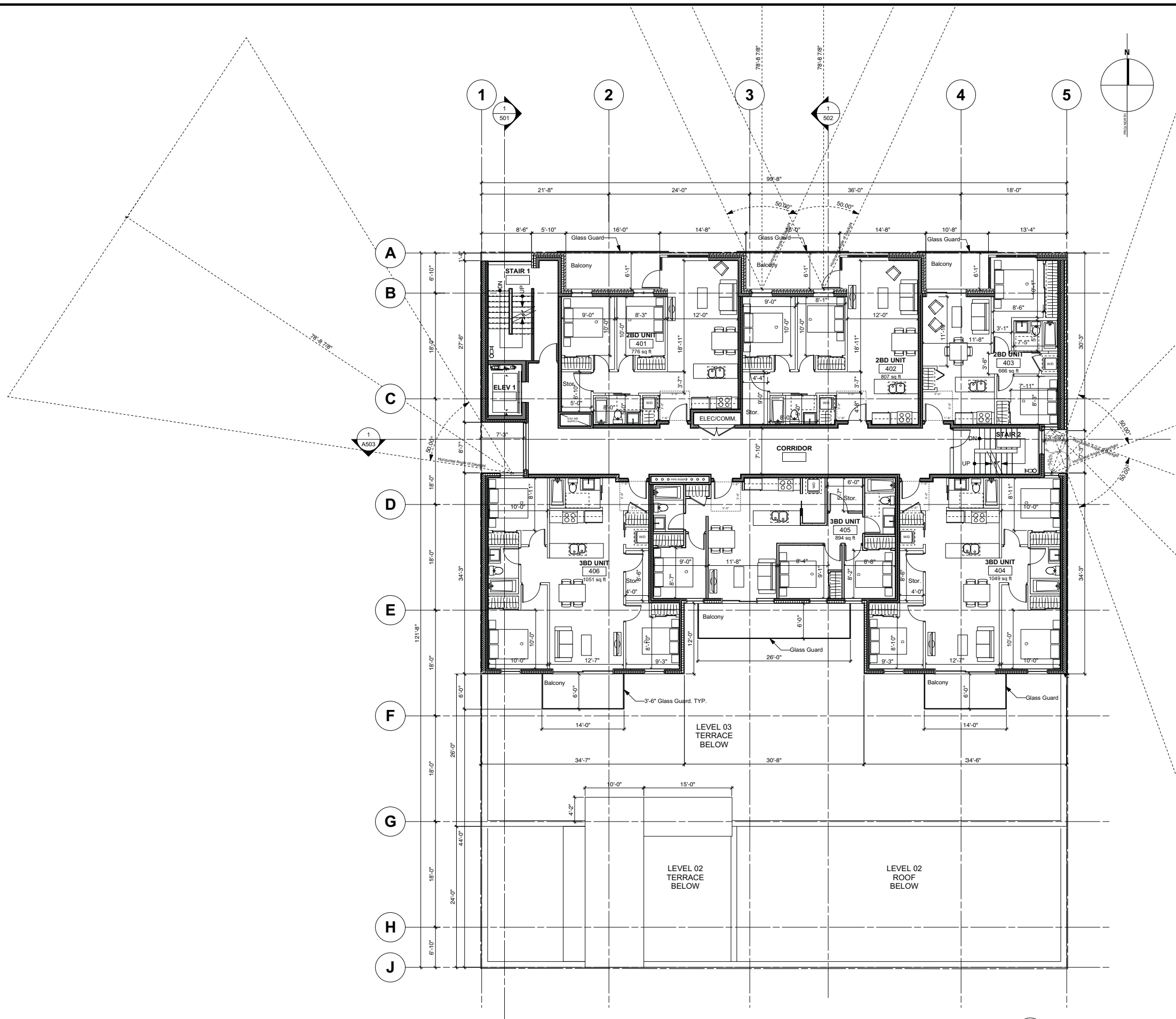
VPLY/WCA

720 East Hastings Street

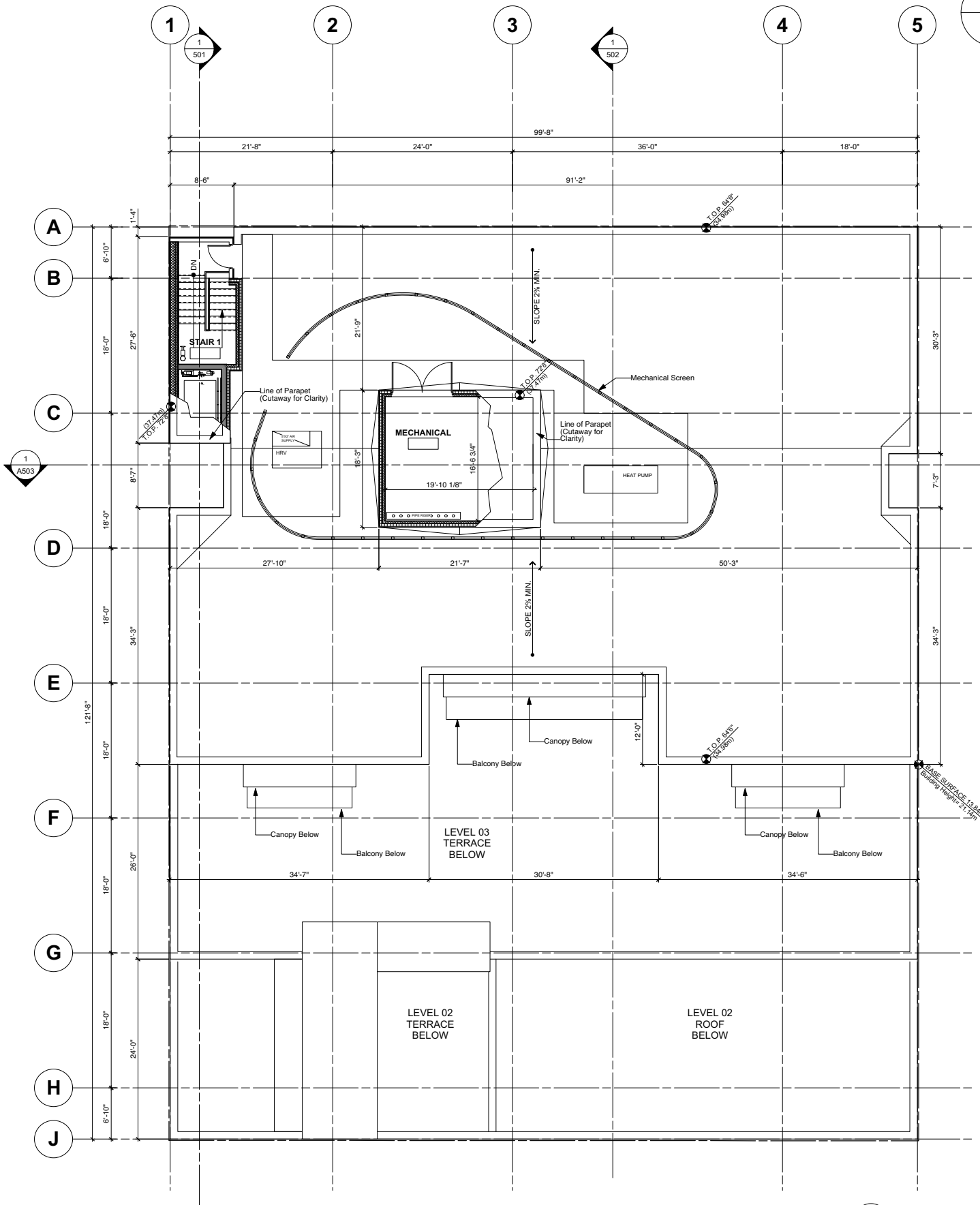
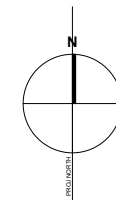
**Level 04-06
Floor Plan**

DRAWN: AP CHECKED: BH
PLOT DATE: 5/28/13

A205



LEVEL 04-06 FLOOR PLAN
SCALE: 1/8"=1' 1



ROOF PLAN 1
SCALE: 1/8"=1'

ISSUED FOR
A 5/27/13 Rezoning/DPA

IMPERIAL
THIS DRAWING IS COPYRIGHTED AND MUST NOT BE USED, REPRODUCED, OR REVISED WITHOUT WRITTEN PERMISSION. ALL DIMENSIONS ARE IN FEET AND INCHES UNLESS OTHERWISE NOTED. VERIFY DIMENSIONS. DO NOT SCALE THIS DRAWING. REPORT INCONSISTENCIES AND OMISSIONS TO THE CONSULTANT FOR CLARIFICATION BEFORE COMMENCING WITH THE WORK. DEVIATIONS FROM THE CONTRACT DOCUMENTS WITHOUT WRITTEN APPROVAL FROM THE CONSULTANT ARE SUBJECT TO CORRECTION AT THE CONTRACTOR'S EXPENSE.

ARCHITECT & PRIME CONSULTANT
DIALOG BC ARCHITECTURE ENGINEERING
INTERIOR DESIGN PLANNING INC.
406 - 611 ALEXANDER STREET
VANCOUVER, BC, V6A 1E1
Tel: (604) 255-1169 Fax: (604) 255-1790

INTERIOR DESIGN
DIALOG BC ARCHITECTURE ENGINEERING
INTERIOR DESIGN PLANNING INC.
406 - 611 ALEXANDER STREET
VANCOUVER, BC, V6A 1E1
Tel: (604) 255-1169 Fax: (604) 255-1790
design@designdialog.ca

STRUCTURAL ENGINEER
READ JONES CHRISTOFFERSEN LTD
SUITE 300, 1295 WEST BROADWAY
VANCOUVER, BC V6H 3X8
Tel: (604) 738-0048 Fax: (604) 788-1107

MECHANICAL ENGINEER
INTEGRAL GROUP
SUITE 180-200 GRANVILLE ST.
VANCOUVER, BC V6C 1S4
Tel: (604) 687-1802 Fax: (604) 687-1802

ELECTRICAL ENGINEER
APPLIED ENGINEERING SOLUTIONS LTD.
600 - 905 WEST FENDER STREET
VANCOUVER, BC V6C 1L6
Tel: (604) 569-6500 Fax: (604) 569-6501

SEAL

VPLY/WCA
720 East Hastings Street

Roof Plan
DRAWN: AP CHECKED: BH
PLOT DATE: 5/28/13

A206