

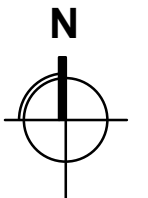
SOUTH ELEVATION / PEDESTRIAN WALKWAY



INTEGRA ARCHITECTURE INC.

416 WEST PENDER STREET
VANCOUVER, BC V6B 1S
T 604.688.4220 F 604.688.4270
info@integra-arch.com
www.integra-arch.com

Copyright reserved. This drawing and design is and at all times remains the exclusive property of INTEGRA ARCHITECTURE INC. and cannot be used without the Architect's consent.



[CLIENT]
**WANSON (OAKRIDGE)
DEVELOPMENT LTD.**

[PROJECT]
**MIXED USE
DEVELOPMENT**

6361 / 6363 / 6385 / 6387 CAMBIE ST.
VANCOUVER, BC CANADA

[TITLE]
**SOUTH
ELEVATION**

11279 [PROJECT]

1/16" = 1'-0" [SCALE]

December 02 2011 [DATE]

3- RZ APPLICATION [ISSUE]

[DRAWING]

A4.30