

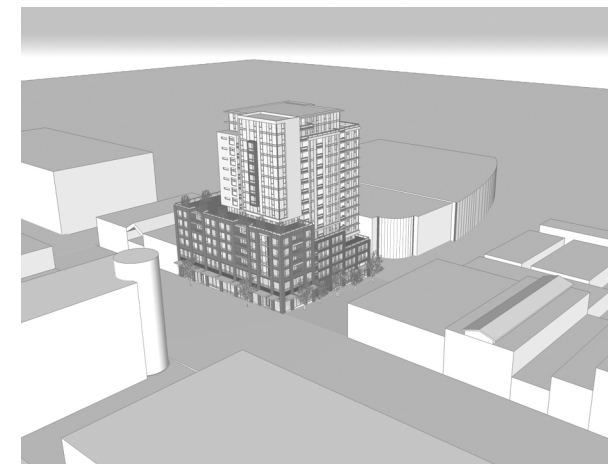
PARTIAL NORTH (MAIN ST.) ELEVATION STREET WALL
SCALE 1/4" = 1'-0"



MAIN STREET LOOKING SOUTH



KEEFER STREET LOOKING EAST



AERIAL VIEW

W. T. LEUNG
ARCHITECTS
INC.

Suite 300 - 973 West Broadway,
Vancouver, British Columbia, Canada V5Z 1K3
Telephone: (604) 736-9711

No.	Date	Issue Notes
3	11/15/12	RE-ISS REZONING
2	6/25/12	RE-ISS' CHAPAC/ HERITAGE COMMITTEE

ISSUE :

PROJECT :

**MAIN &
KEEFER**

601-627 MAIN STREET
VANCOUVER, BC

DRAWING TITLE :

**PARTIAL
NORTH ELEV.
IMAGES**

JOB NO. : **11-14**

DRAWN : **CC**

DATE : **NOVEMBER 15, 2012**

SCALE : **N/A**

CHECKED : **WTL**

© Copyright reserved. This plan and design is and at all times remains the exclusive property of W. T. Leung Architects Inc. and cannot be used without the Architects' consent.

DRAWING NO. :

A-1.02
of