

1 09-21-11 ISSUED FOR REZONING
 no.: | date: | item:
 Revisions:

dk Durante Kreuk Ltd.
 102 - 1637 West 5th Avenue
 Vancouver BC V6J 1N5
 t: 604 684 4611
 f: 604 684 0577
 www.dk.bc.ca

Project:
**Main & Keefer,
 Vancouver BC**

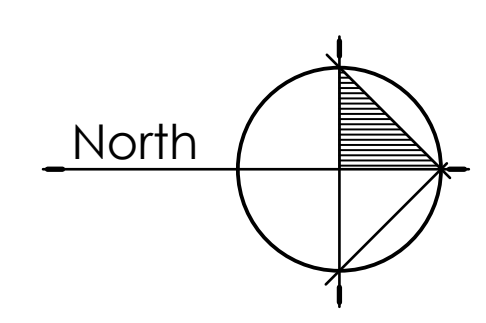
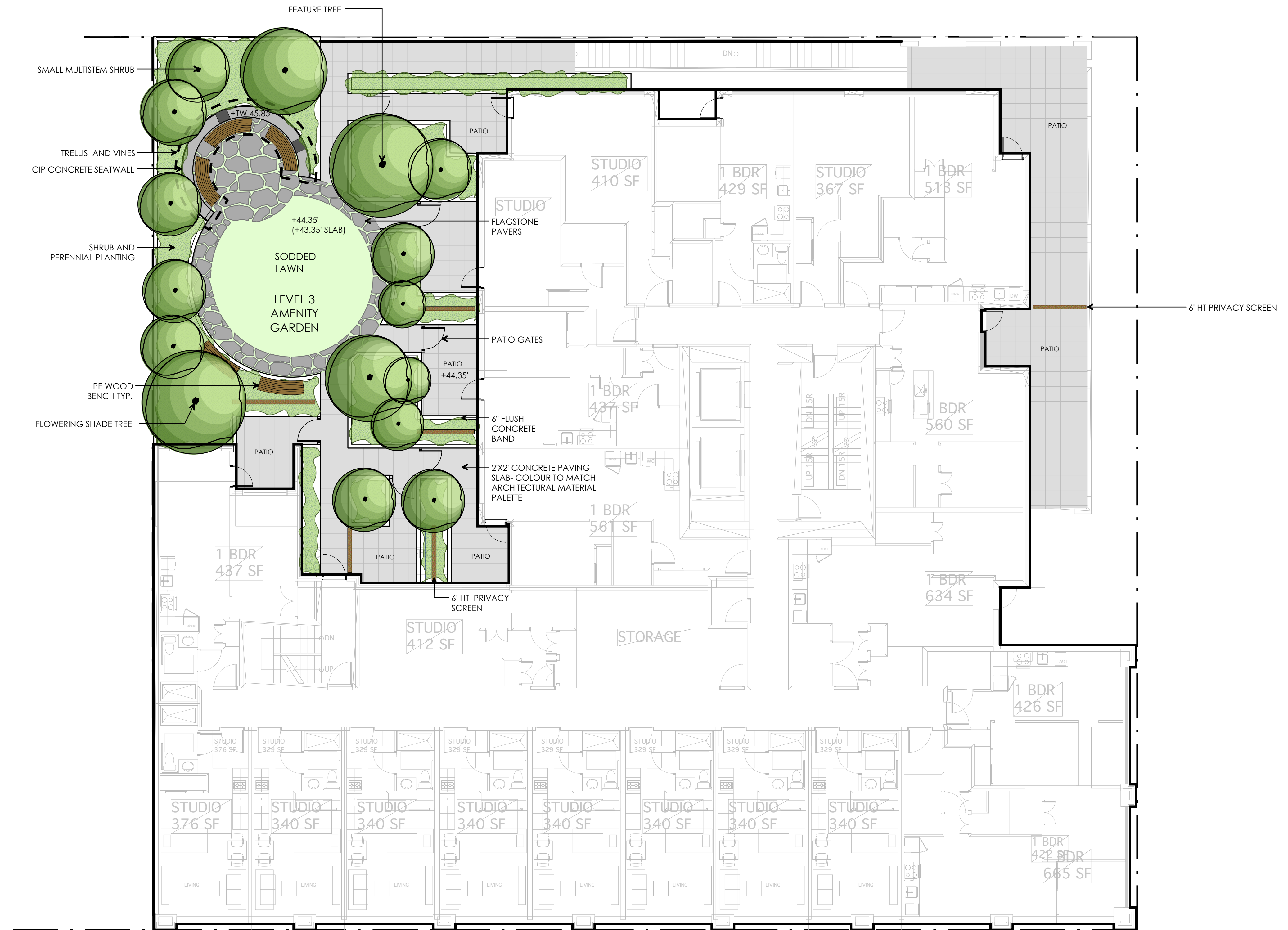
Drawn by: AG
 Checked by: JS
 Date: JULY 19 2011
 Scale: 1/8"=1'

Drawing Title:
**GROUND FLOOR
 LANDSCAPE CONCEPT
 PLAN**

Project No.:
 11044
 Sheet No.:

PROPOSED STREET TREE:
 FINAL SPECIES, QUANTITY AND SPACING TO THE APPROVAL
 OF CITY ENGINEER AND PARK BOARD. CONTACT EILEEN CURREN
 (604-871-6131) OF ENGINEERING STREETS DIVISION REGARDING
 TREE SPACING AND QUANTITY. CONTACT AMIT GANDHA
 (604-257-8587) OF PARK BOARD REGARDING TREE SPECIES.

- BIKE STALLS (6 SPACES)
- LOW EVERGREEN PLANTING TO SOFTEN BUILDING ENTRY
- ENTRY GATE- REFER TO ARCHITECTURE DRAWINGS
- PAVING TO MATCH INTERIOR RESIDENTIAL LOBBY WITH A NON-SLIP SURFACE TREATMENT
- EXISTING STREET TREE (PRUNUS SPP.) TO BE PROTECTED AND RETAINED
- CHINATOWN GRANITE TREE SURROUND TO COV ENGINEERING STANDARD
- CHINATOWN PAVING: BROOM FINISHED CONCRETE WITH TROWEL MARKS AS PER COV ENGINEERING STANDARD
- CHINATOWN PAVING: 15" WIDE EXPOSED AGGREGATE CONCRETE BAND TO COV ENGINEERING STANDARD
- EXISTING CHINATOWN STREET LIGHT, TYPICAL



1 09-21-11 ISSUED FOR REZONING
 no.: | date: | item:
 Revisions:



Project:
**Main & Keefer,
 Vancouver BC**

Drawn by: AG
 Checked by: JS
 Date: JULY 19 2011
 Scale: 1/8"=1'

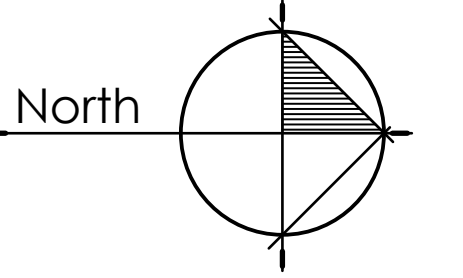
Drawing Title:
**LEVEL 3 LANDSCAPE
 CONCEPT PLAN**

Project No.:
 11044
 Sheet No.:

LANE



MAIN STREET



1 09-21-11 ISSUED FOR REZONING

no.: | date: | item:
Revisions:



Project:
**Main & Keefer,
Vancouver BC**

Drawn by: AG
Checked by: JS
Date: JULY 19 2011
Scale: 1/8"=1'

Drawing Title:
**LEVEL 8 LANDSCAPE
CONCEPT PLAN**

Project No.:
11044

Sheet No.:

NOTE: ALL PLANTING ADJACENT TO CHILDREN'S PLAY AREA TO BE NON-TOXIC