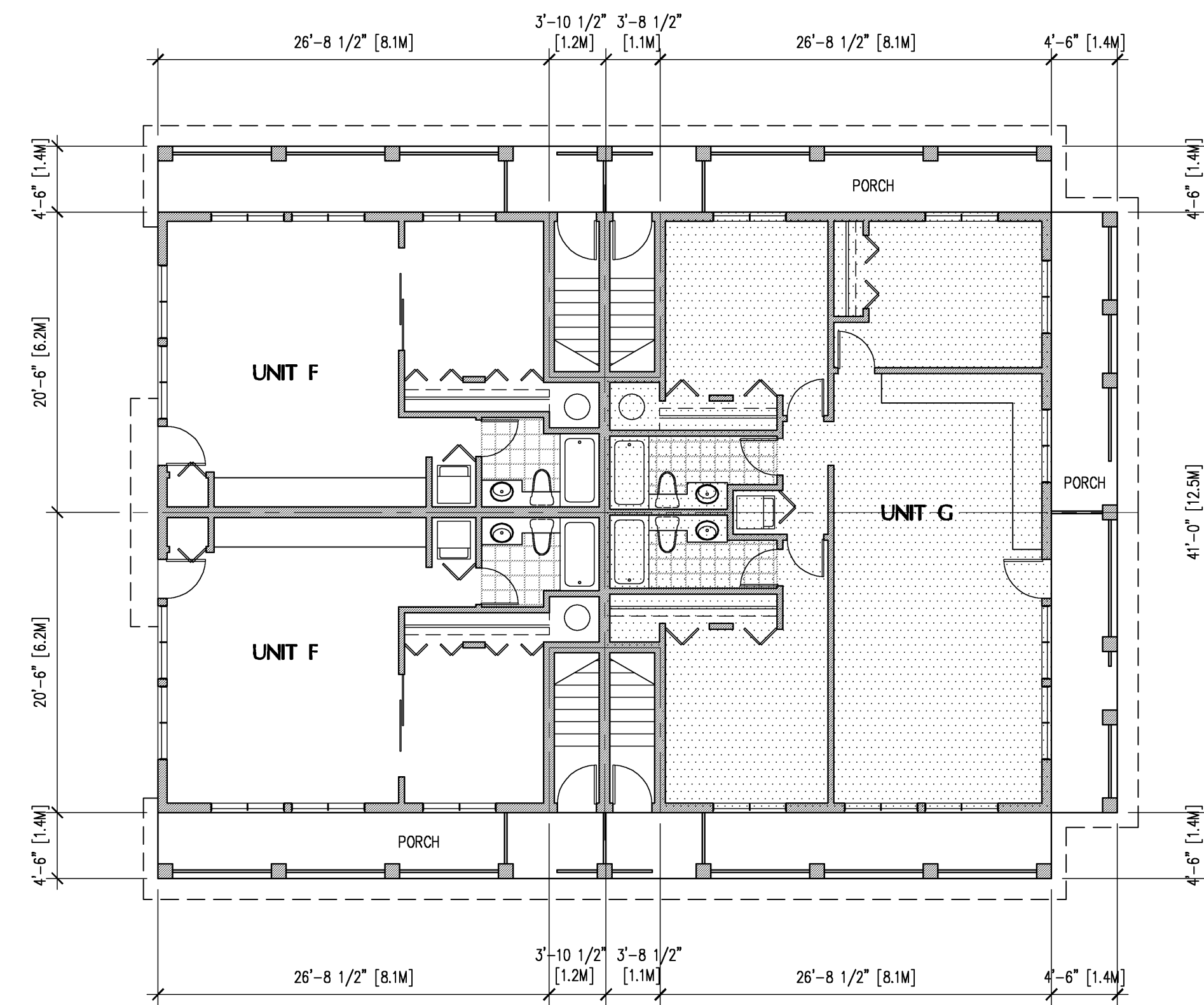
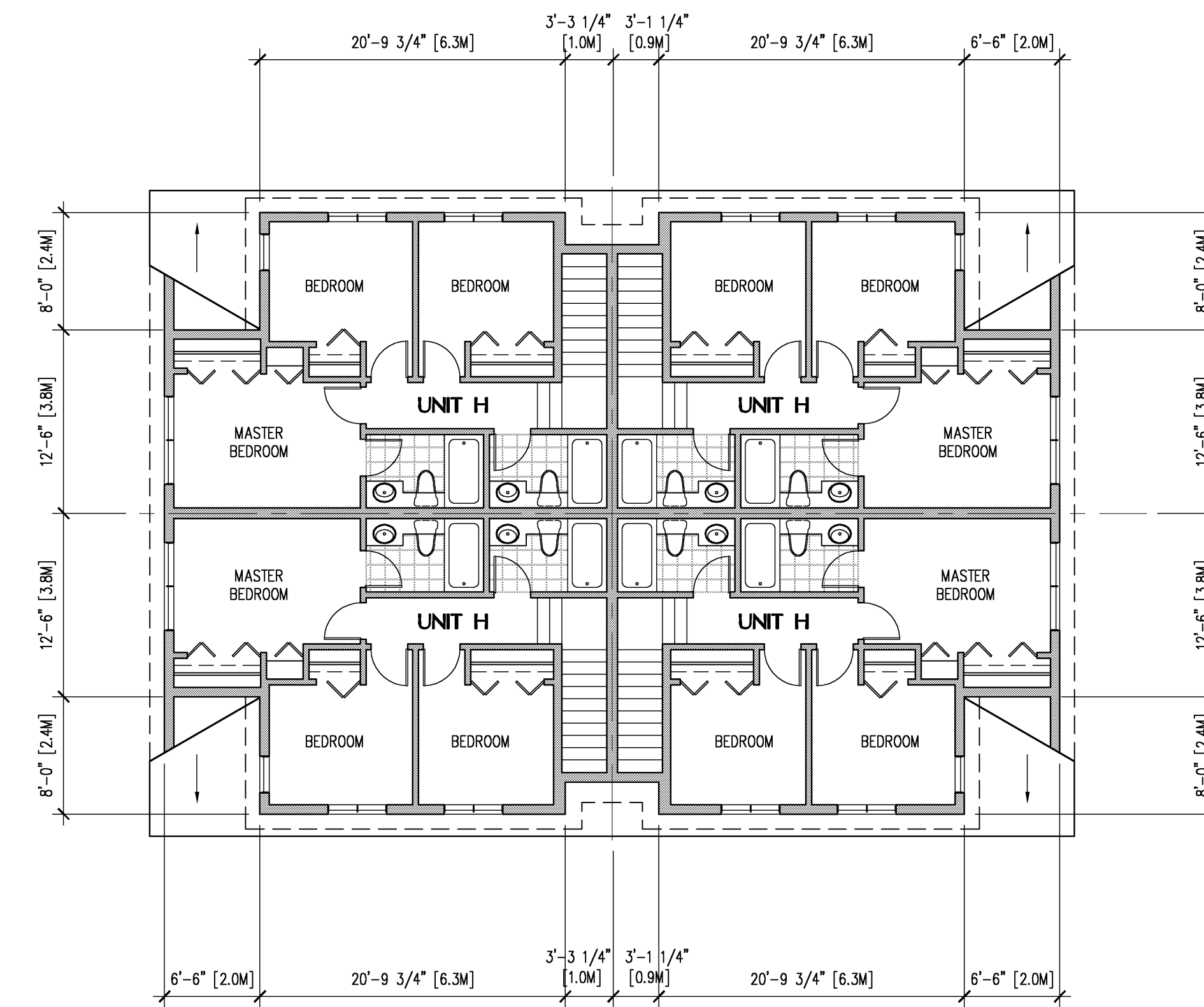


NOTE: DRAWING IS A SOFT METRIC CONVERSION

COPYRIGHT RESERVED. THIS DRAWING MUST NOT BE SCALED. VARIATIONS AND MODIFICATIONS TO WORK SHOWN ON THIS DRAWING SHALL NOT BE CARRIED OUT WITHOUT WRITTEN PERMISSION FROM THE OFFICE OF HYWEL JONES ARCHITECT LIMITED. THIS DRAWING IS THE EXCLUSIVE PROPERTY OF HYWEL JONES ARCHITECT LIMITED AND CAN ONLY BE REPRODUCED WITH PERMISSION.



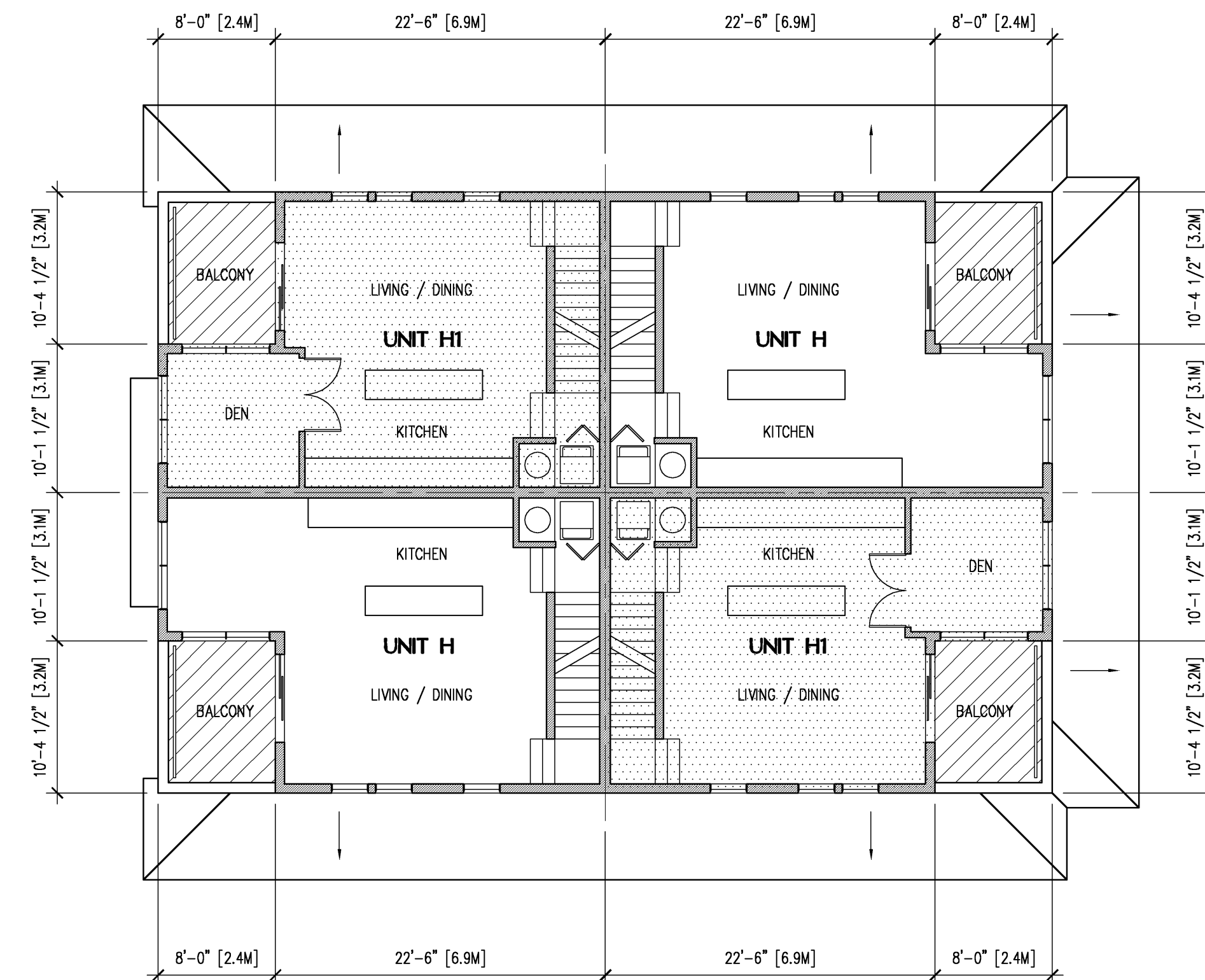
GROUND FLOOR



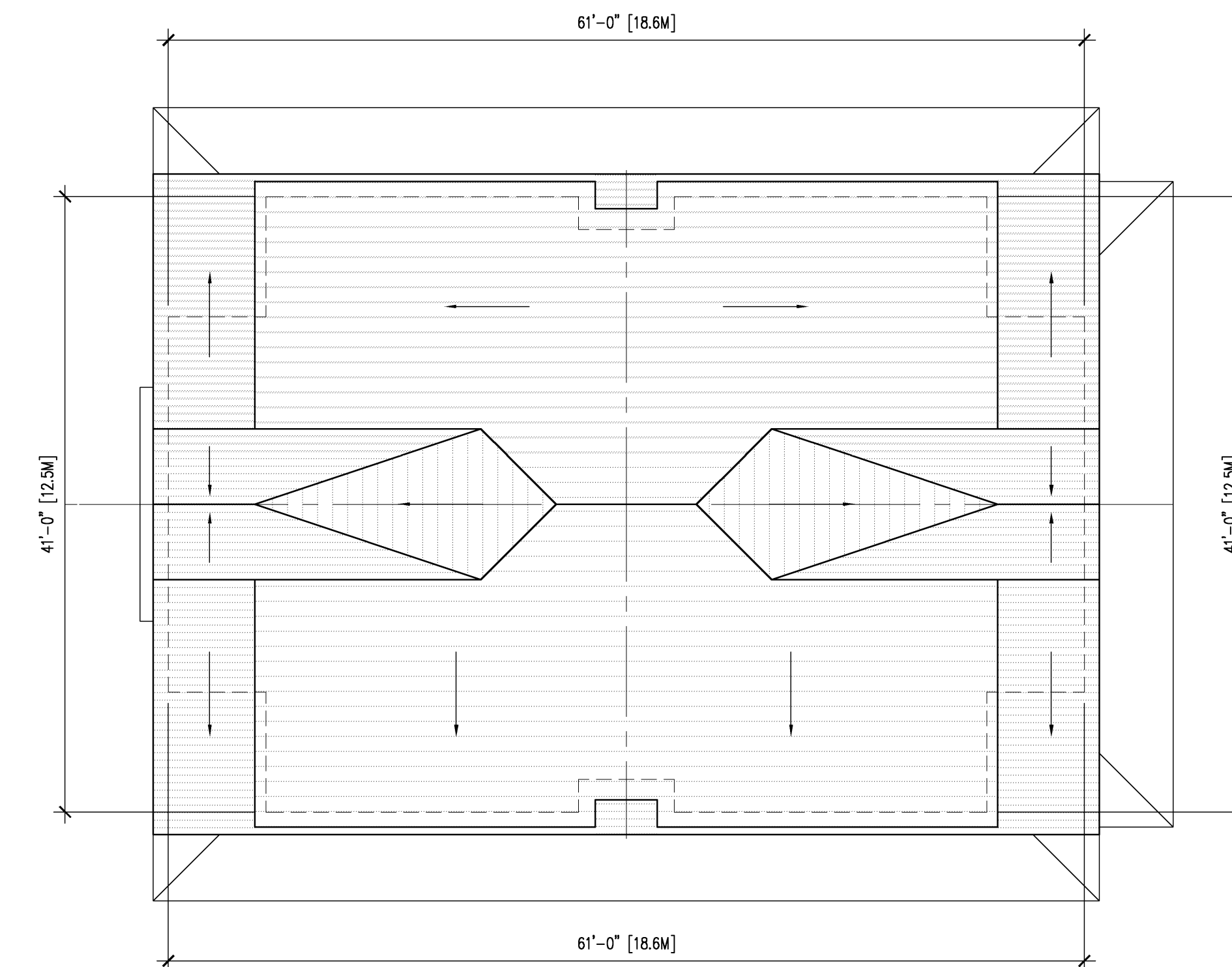
THIRD FLOOR

UNIT BREAKDOWN:

UNIT A	GROUND FLOOR 1 BED	470 SF	optionally accessible
UNIT B	GROUND FLOOR 2 BED	730 SF	optionally accessible
UNIT C	UPPER 2 BED TOWNHOUSE	945 SF	
UNIT D	UPPER 2 BED AND SUITE	1,175 SF	
UNIT E	UPPER 3 BED TOWNHOUSE	1,280 SF	
UNIT F	GROUND FLOOR 1 BED & DEN	595 SF	optionally accessible
UNIT G	GROUND FLOOR 3 BED RANCHER	1,185 SF	
UNIT H	UPPER 3 BED TOWNHOUSE	1,175 SF	optionally accessible



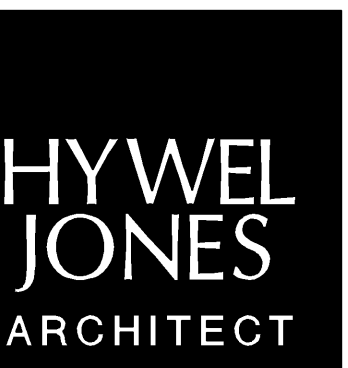
SECOND FLOOR



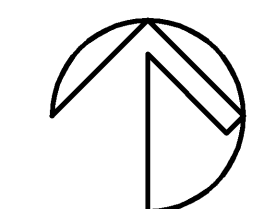
ROOF PLAN

PROPOSED RESIDENTIAL DEVELOPMENT
AT AVALON DAIRY,
5808 WALES STREET, VANCOUVER, B.C.

TYPICAL UNIT PLANS
TYPICAL BLOCK



2305 HEMLOCK STREET
VANCOUVER, BRITISH COLUMBIA
CANADA V6H 2V1
PROJECT 1137
SCALE 1:100
DATE MAY 22, 2013
DRAWN RT
CAD FILE 1137_RZ_A11 TO A12
ROT DATE MAY 22, 2013

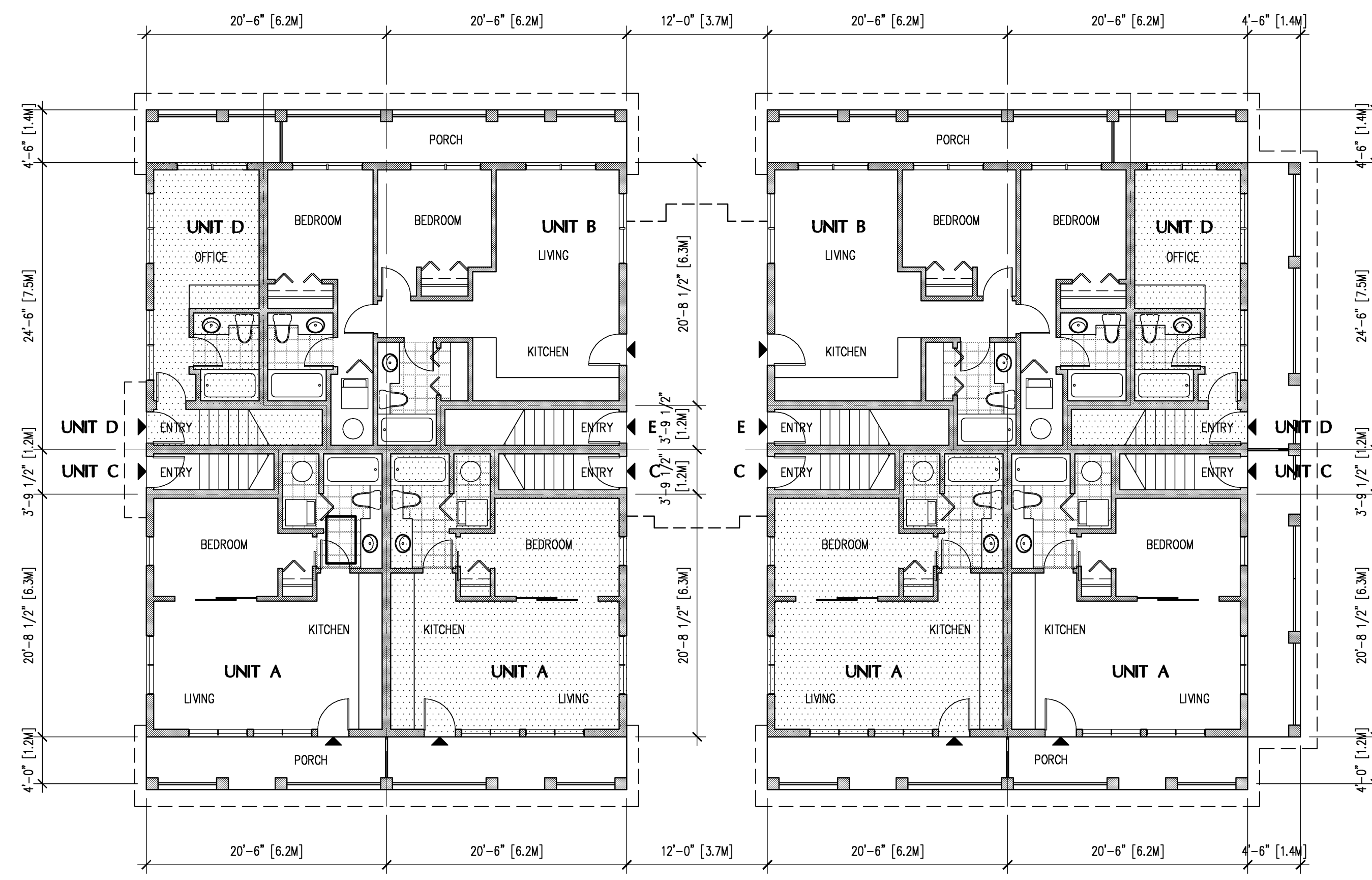


△ REVISED FOR REZONING - MAY 22, 2013 (BRIDGE UNITS)
△ REVISED FOR REZONING - APRIL 12, 2013

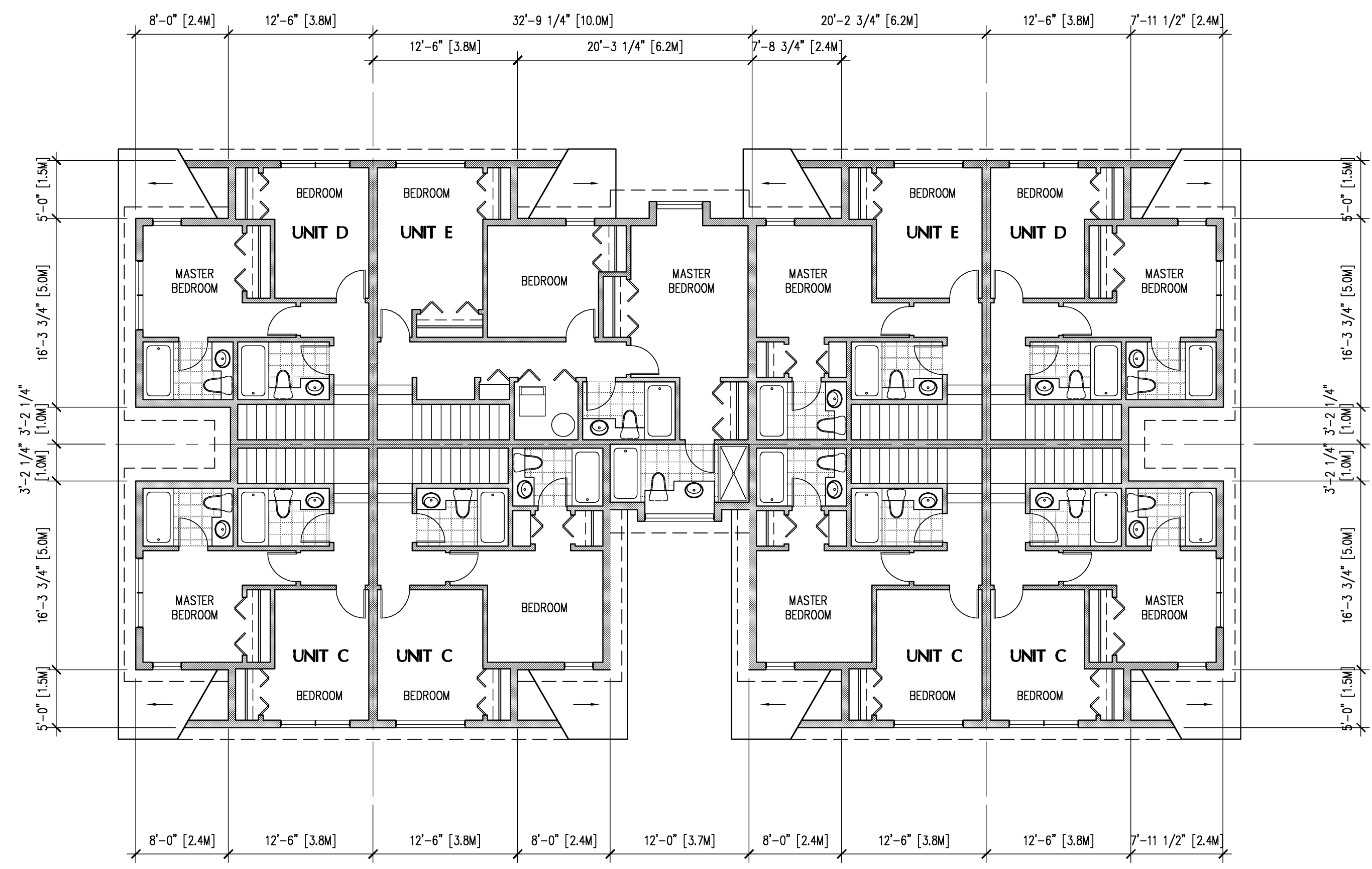
A11

NOTE: DRAWING IS A SOFT METRIC CONVERSION

COPYRIGHT RESERVED. THIS DRAWING MUST NOT BE SCALED. VARIATIONS AND MODIFICATIONS TO WORK SHOWN ON THIS DRAWING SHALL NOT BE CARRIED OUT WITHOUT WRITTEN PERMISSION FROM THE OFFICE OF HYWEL JONES ARCHITECT LIMITED. THIS DRAWING IS THE EXCLUSIVE PROPERTY OF HYWEL JONES ARCHITECT LIMITED AND CAN ONLY BE REPRODUCED WITH PERMISSION.



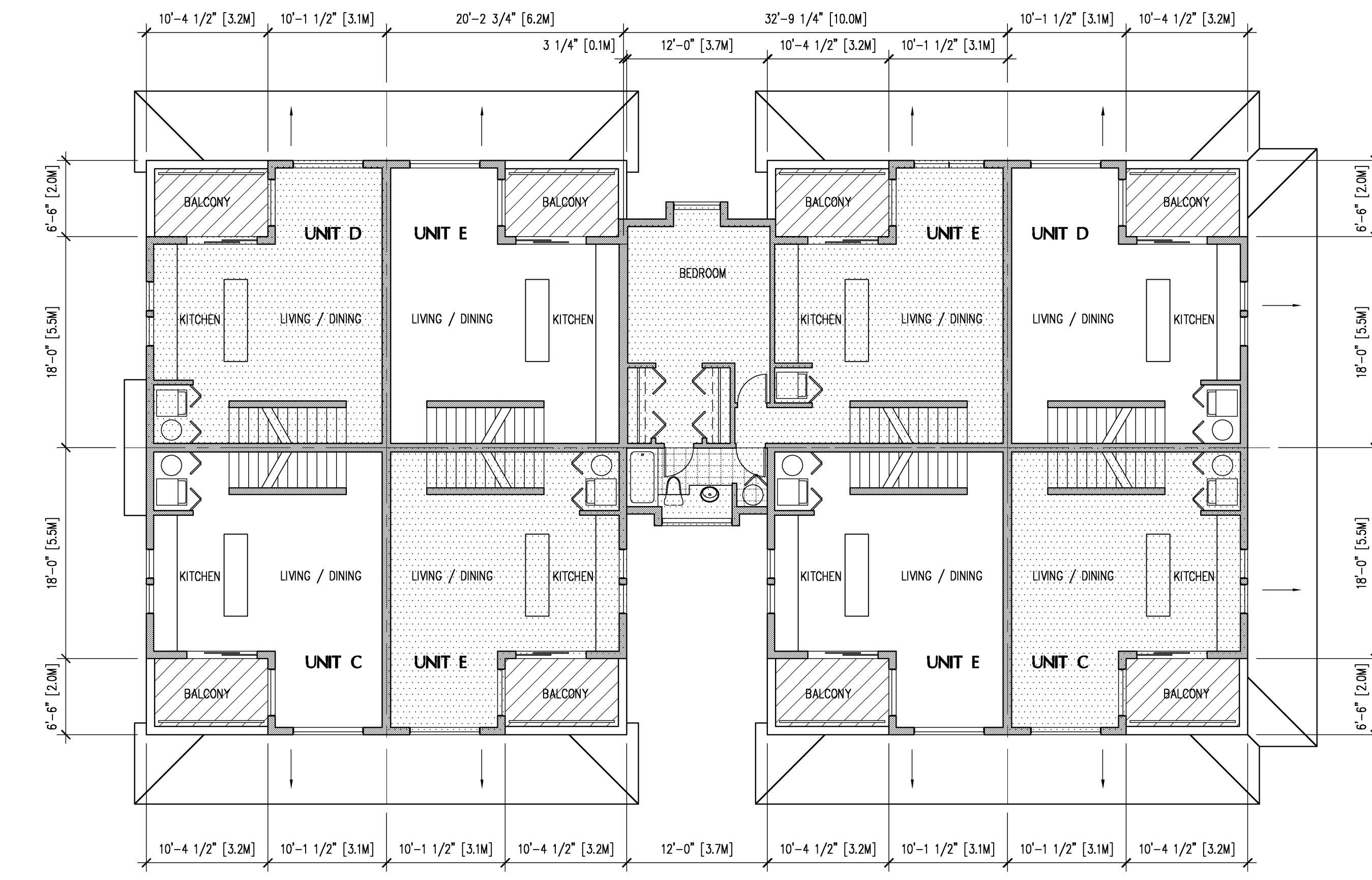
GROUND FLOOR



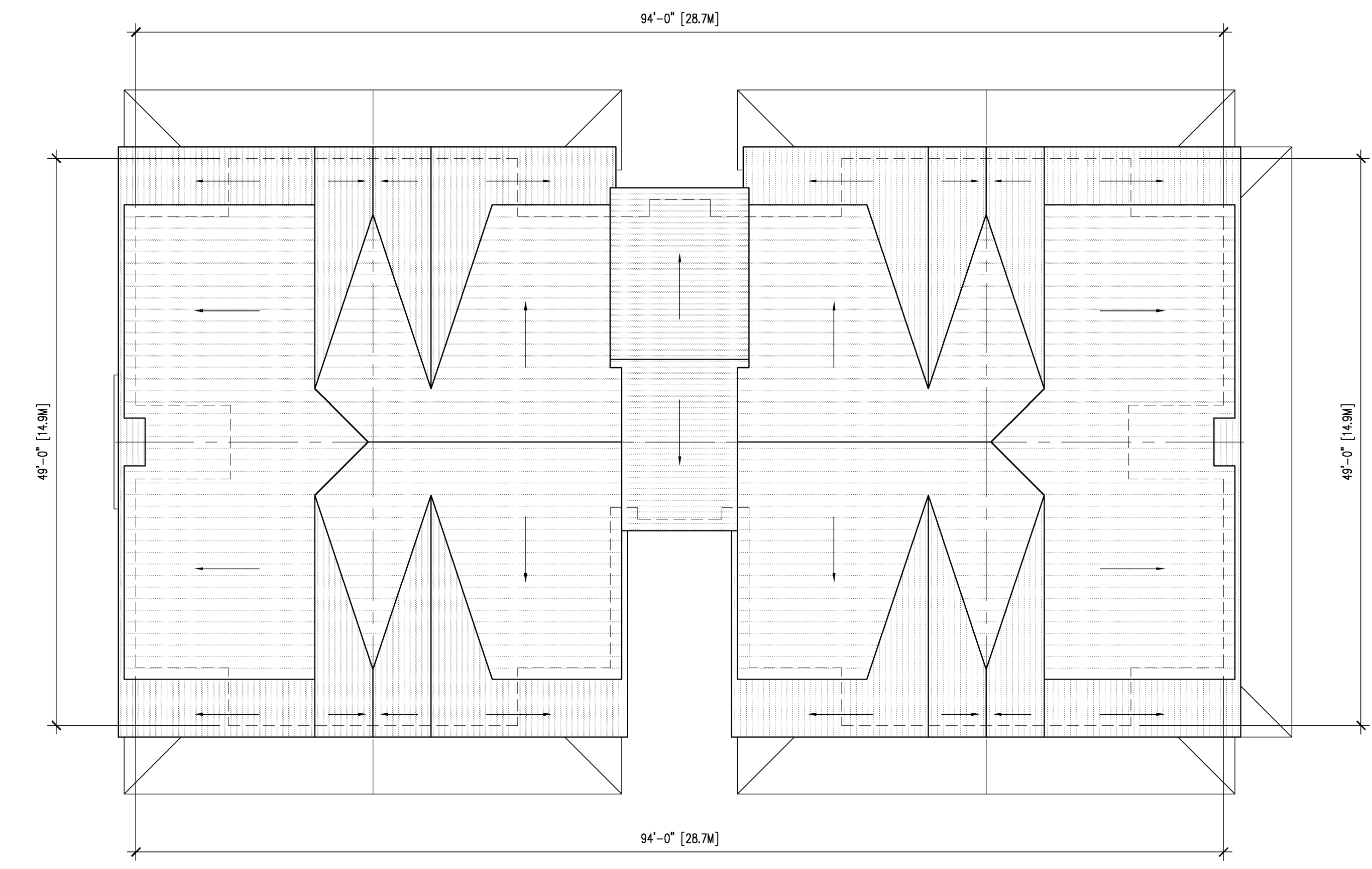
THIRD FLOOR

UNIT BREAKDOWN:

UNIT A	GROUND FLOOR 1 BED	470	optionally accessible
UNIT B	GROUND FLOOR 2 BED	730	optionally accessible
UNIT C	UPPER 2 BED TOWNHOUSE	945	
UNIT D	UPPER 2 BED AND SUITE	1,175	
UNIT E	UPPER 3 BED TOWNHOUSE	1,280	
UNIT F	GROUND FLOOR 1 BED & DEN	595	optionally accessible
UNIT G	GROUND FLOOR 3 BED RANCHER	1,185	optionally accessible
UNIT H	UPPER 3 BED TOWNHOUSE	1,175	



SECOND FLOOR



ROOF PLAN

- △ REVISED FOR REZONING - MAY 22, 2013 (BRIDGE UNITS)
- △ REVISED FOR REZONING - APRIL 12, 2013

PROPOSED RESIDENTIAL DEVELOPMENT
AT AVALON DAIRY,
5808 WALES STREET, VANCOUVER, B.C.

TYPICAL UNIT PLANS
BLOCK WITH BRIDGE UNIT

HYWEL
JONES
ARCHITECT

2305 HEMLOCK STREET
VANCOUVER, BRITISH COLUMBIA
CANADA V6H 2V1
PROJECT 1137
SCALE 1:100
DATE MAY 22, 2013
DRAWN RT
CAD FILE 1137_RZ_A04
PLOT DATE MAY 22, 2013

A12