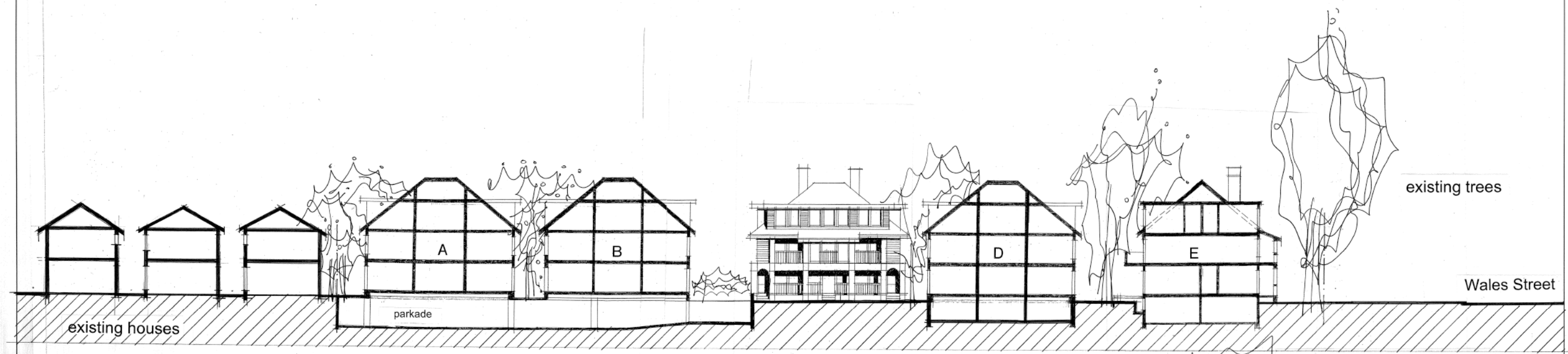
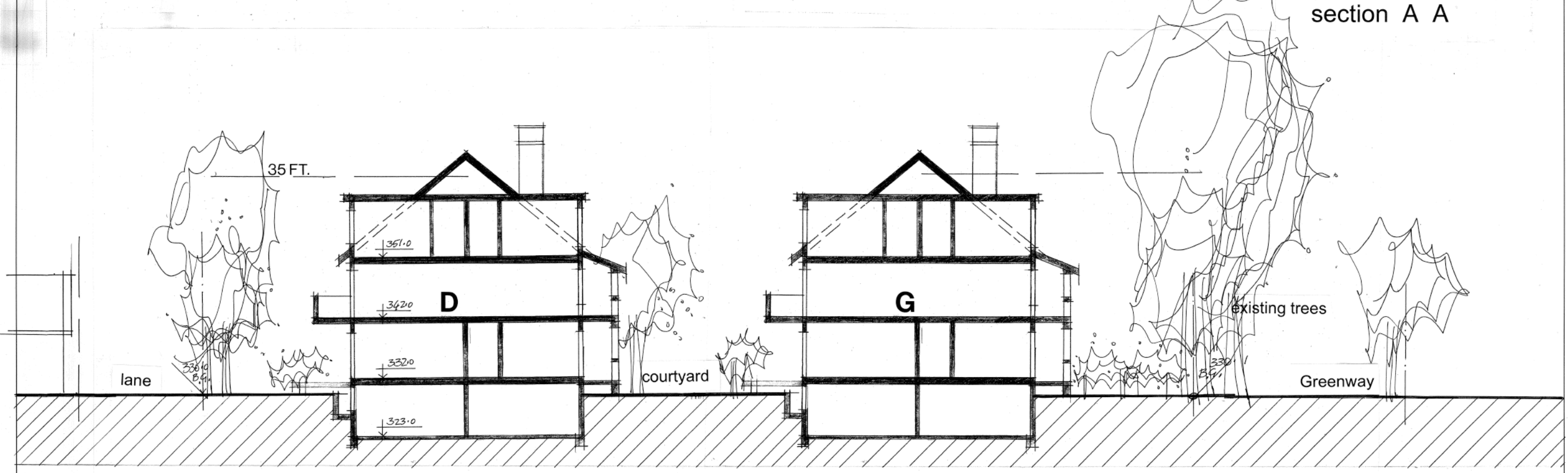


COPYRIGHT RESERVED. THIS DRAWING MUST NOT BE SCALED. VARIATIONS AND MODIFICATIONS TO WORK SHOWN ON THIS DRAWING SHALL NOT BE CARRIED OUT WITHOUT WRITTEN PERMISSION FROM THE OFFICE OF HYWEL JONES ARCHITECT LIMITED. THIS DRAWING IS THE EXCLUSIVE PROPERTY OF HYWEL JONES ARCHITECT LIMITED AND CAN ONLY BE REPRODUCED WITH PERMISSION.



section A A



section B B

PROPOSED RESIDENTIAL DEVELOPMENT
AT AVALON DAIRY,
5808 WALES STREET, VANCOUVER, B.C.

SITE AND BUILDING
SECTIONS

**HYWEL
JONES**
ARCHITECT

2305 HEMLOCK STREET
VANCOUVER, BRITISH COLUMBIA
CANADA V6H 2V1
(604)733-1599 FAX(733-1522)
PROJECT 1137
SCALE 1/8" = 1'-0"
DATE JULY 25, 2012
DRAWN RT
CAD FILE 1137_R2_A06
PLOT DATE JULY 25, 2012

A6