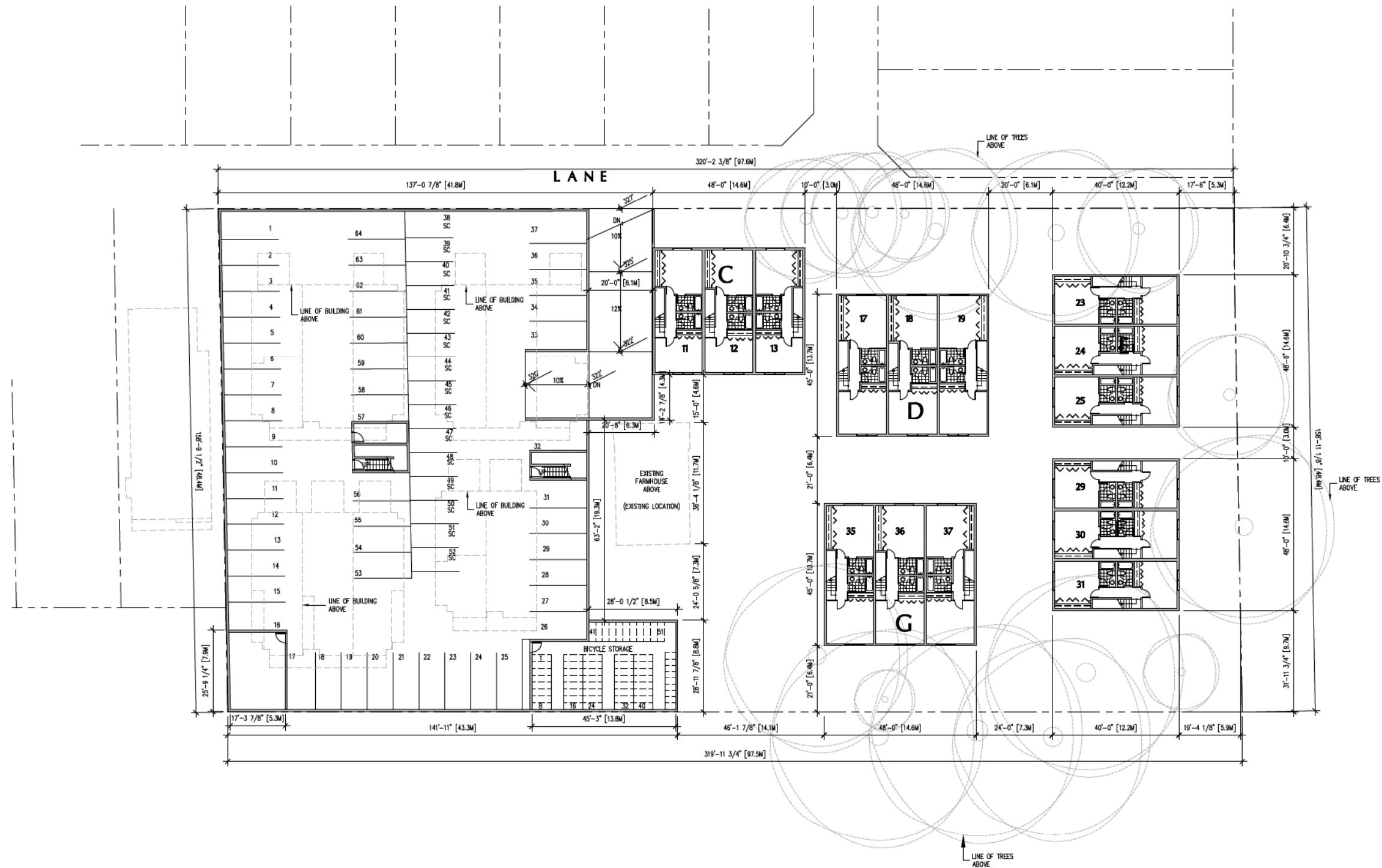


NOTE: DRAWING IS A SOFT METRIC CONVERSION

COPYRIGHT RESERVED. THIS DRAWING MUST NOT BE SCALED. VARIATIONS AND MODIFICATIONS TO WORK SHOWN ON THIS DRAWING SHALL NOT BE CARRIED OUT WITHOUT WRITTEN PERMISSION FROM THE OFFICE OF HYWEL JONES ARCHITECT LIMITED. THIS DRAWING IS THE EXCLUSIVE PROPERTY OF HYWEL JONES ARCHITECT LIMITED AND CAN ONLY BE REPRODUCED WITH PERMISSION.



PROPOSED RESIDENTIAL DEVELOPMENT
AT AVALON DAIRY,
5808 WALES STREET, VANCOUVER, B.C.

BASEMENT &
PARKADE PLAN

HYWEL
JONES
ARCHITECT

2305 HEMLOCK STREET
VANCOUVER, BRITISH COLUMBIA
CANADA V6H 2V1
604/733-1599 #604/733-1522
PROJECT 1137
SCALE 1:200 [SOFT METRIC]
DATE JUN 19, 2012
DRAWN RT, DD
CAD FILE 1137_RZ_A04
PLOT DATE SEPT 20, 2012



A4