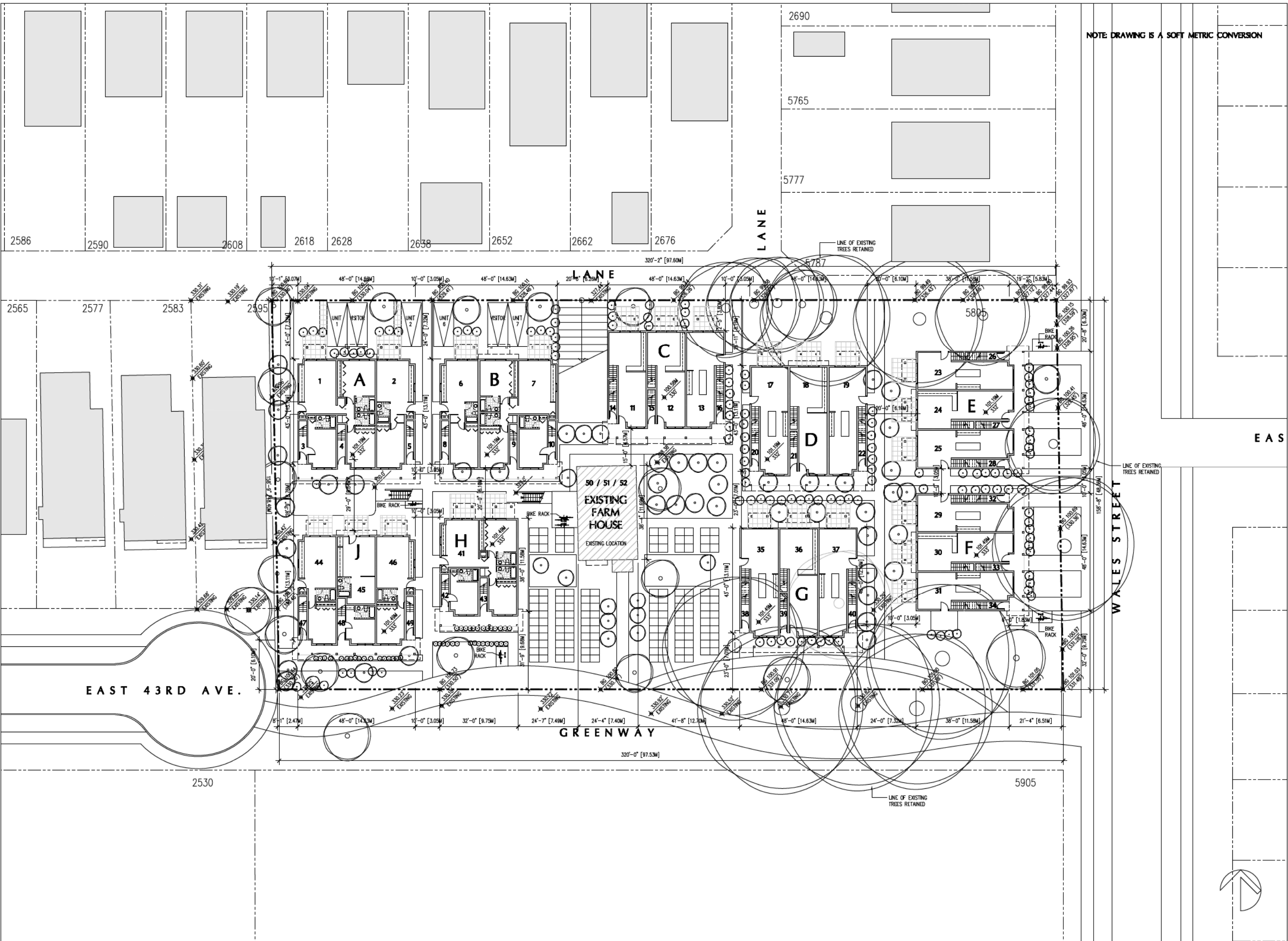


COPYRIGHT RESERVED. THIS DRAWING MUST NOT BE SCALED. VARIATIONS AND MODIFICATIONS TO WORK SHOWN ON THIS DRAWING SHALL NOT BE CARRIED OUT WITHOUT WRITTEN PERMISSION FROM THE OFFICE OF HYWEL JONES ARCHITECT LIMITED. THIS DRAWING IS THE EXCLUSIVE PROPERTY OF HYWEL JONES ARCHITECT LIMITED AND CAN ONLY BE REPRODUCED WITH PERMISSION.

NOTE: DRAWING IS A SOFT METRIC CONVERSION



PROPOSED RESIDENTIAL DEVELOPMENT  
AT AVALON DAIRY,  
5808 WALES STREET, VANCOUVER, B.C.

SITE &  
GROUND FLOOR PLAN



2305 HEMLOCK STREET  
VANCOUVER, BRITISH COLUMBIA  
CANADA V6H 2V1  
16041735-1599 #16041735-1522  
PROJECT 1137  
SCALE 1:200 [SOFT METRIC]  
DATE JUN 19, 2012  
DRAWN RT, BD  
CAD FILE 1137\_RZ\_A01  
PLOT DATE SEPT 20, 2012

A1

NOTE: DRAWING IS A SOFT METRIC CONVERSION

COPYRIGHT RESERVED. THIS DRAWING MUST NOT BE SCALED. VARIATIONS AND MODIFICATIONS TO WORK SHOWN ON THIS DRAWING SHALL NOT BE CARRIED OUT WITHOUT WRITTEN PERMISSION FROM THE OFFICE OF HYWEL JONES ARCHITECT LIMITED. THIS DRAWING IS THE EXCLUSIVE PROPERTY OF HYWEL JONES ARCHITECT LIMITED AND CAN ONLY BE REPRODUCED WITH PERMISSION.

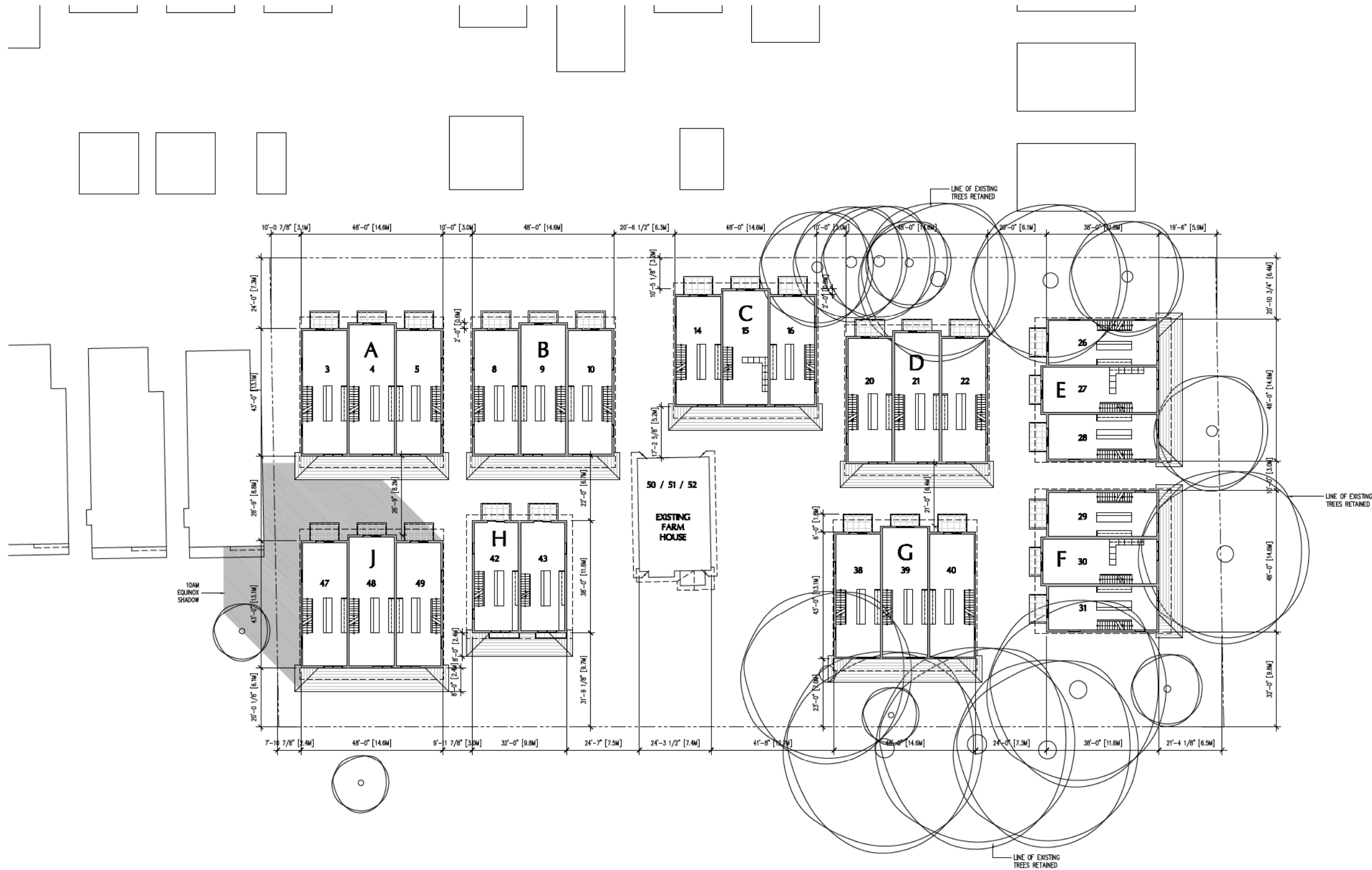
PROPOSED RESIDENTIAL DEVELOPMENT  
AT AVALON DAIRY,  
5808 WALES STREET, VANCOUVER, B.C.

SECOND FLOOR

HYWEL  
JONES  
ARCHITECT

2305 HEMLOCK STREET  
VANCOUVER, BRITISH COLUMBIA  
CANADA V6H 2V1  
(604)733-1599 #FAX(604)733-1522  
PROJECT 1137  
SCALE 1:200  
DATE JUN 19, 2012  
DRAWN RT, DD  
CAD FILE 1137\_RZ\_A02  
PLOT DATE SEPT 20, 2012

A2



NOTE: DRAWING IS A SOFT METRIC CONVERSION

COPYRIGHT RESERVED. THIS DRAWING MUST NOT BE SCALED. VARIATIONS AND MODIFICATIONS TO WORK SHOWN ON THIS DRAWING SHALL NOT BE CARRIED OUT WITHOUT WRITTEN PERMISSION FROM THE OFFICE OF HYWEL JONES ARCHITECT LIMITED. THIS DRAWING IS THE EXCLUSIVE PROPERTY OF HYWEL JONES ARCHITECT LIMITED AND CAN ONLY BE REPRODUCED WITH PERMISSION.

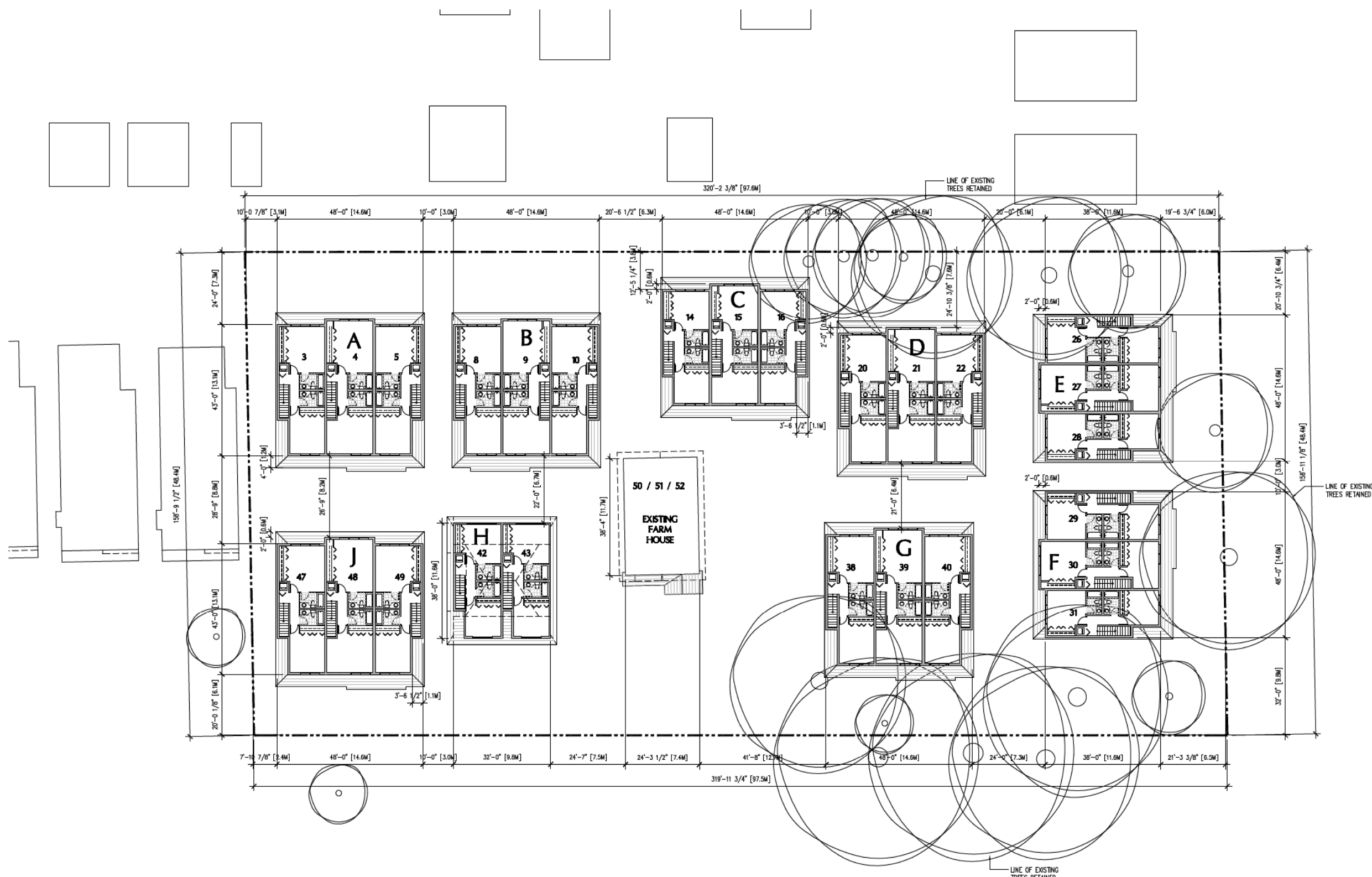
PROPOSED RESIDENTIAL DEVELOPMENT  
AT AVALON DAIRY,  
5808 WALES STREET, VANCOUVER, B.C.

THIRD FLOOR

HYWEL  
JONES  
ARCHITECT

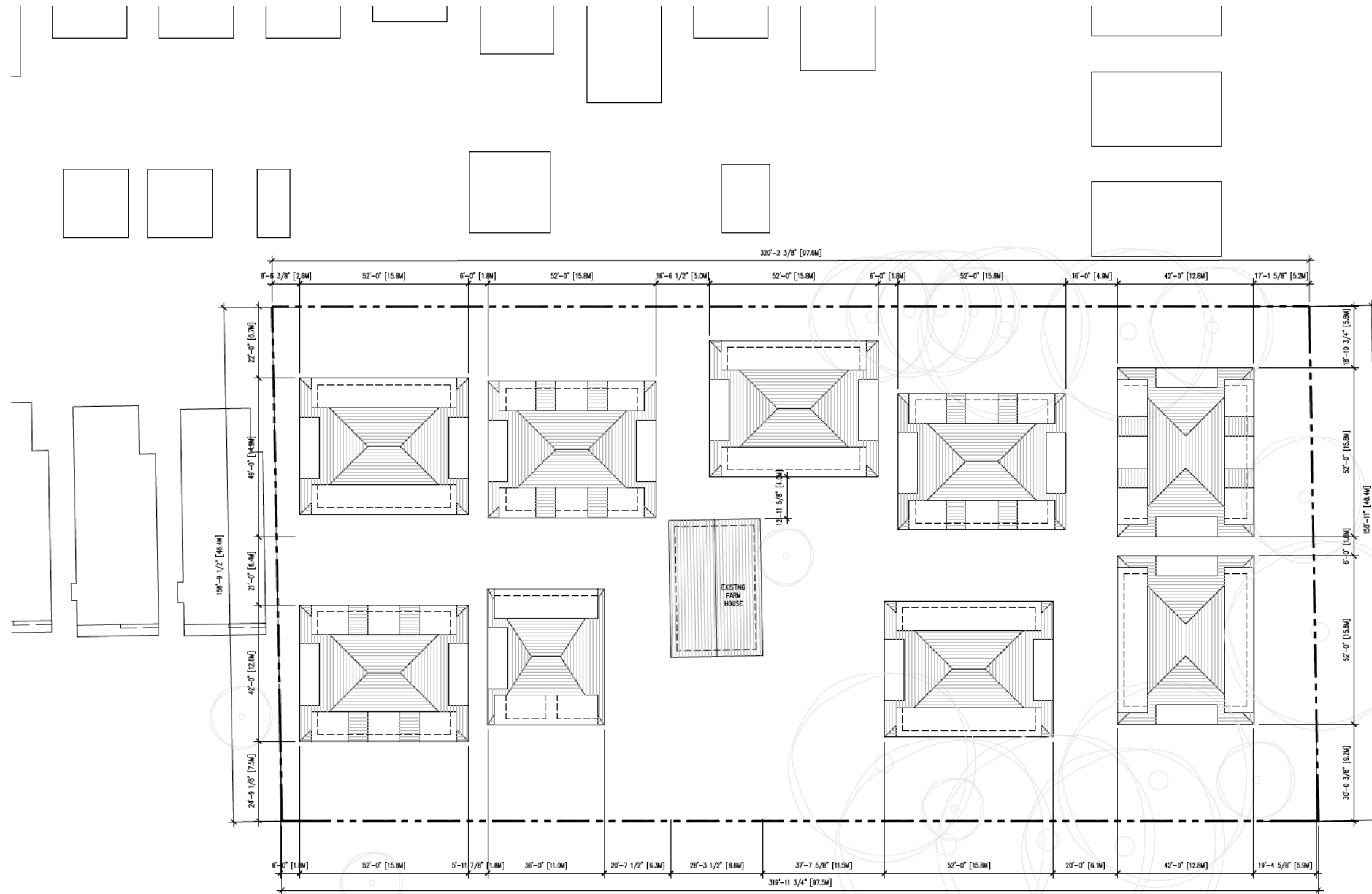
2305 HEMLOCK STREET  
VANCOUVER, BRITISH COLUMBIA  
CANADA V6H 2V1  
6041735-1599 #6041735-1522  
PROJECT 1137  
SCALE 1:200  
DATE JUN 19, 2012  
DRAWN RT, BD  
CAD FILE 1137\_RZ\_A03  
PLOT DATE SEPT 20, 2012

A3



NOTE: DRAWING IS A SOFT METRIC CONVERSION

COPYRIGHT RESERVED. THIS DRAWING  
MUST NOT BE SCALED. VARIATIONS  
AND MODIFICATIONS TO WORK SHOWN  
ON THIS DRAWING SHALL NOT BE  
CARRIED OUT WITHOUT WRITTEN  
PERMISSION FROM THE OFFICE OF  
HYWEL JONES ARCHITECT LIMITED. THIS  
DRAWING IS THE EXCLUSIVE PROPERTY  
OF HYWEL JONES ARCHITECT LIMITED  
AND CAN ONLY BE REPRODUCED WITH  
PERMISSION.



PROPOSED RESIDENTIAL DEVELOPMENT  
AT AVALON DAIRY,  
5808 WALES STREET, VANCOUVER, B.C.

ROOF PLAN

HYWEL  
JONES  
ARCHITECT

2305 HEMLOCK STREET  
VANCOUVER, BRITISH COLUMBIA  
CANADA V6H 2V1  
(604)733-1599 #FAX(604)733-1522  
PROJECT 1137  
SCALE 1:200 [SOFT METRIC]  
DATE JUN 19, 2012  
DRAWN RT, DD  
CAD FILE 1137\_RZ\_A05  
PLOT DATE SEPT 20, 2012



A5