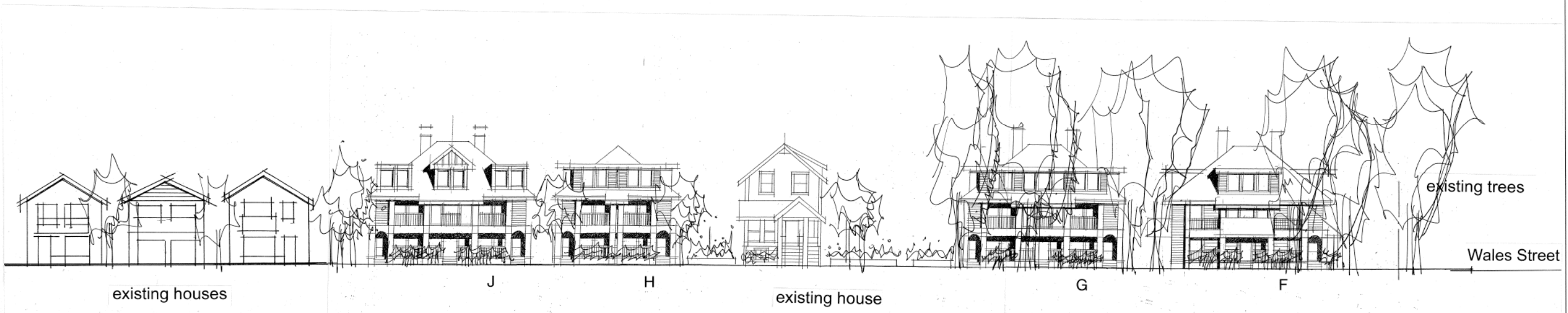


COPYRIGHT RESERVED. THIS DRAWING MUST NOT BE SCALED. VARIATIONS AND MODIFICATIONS TO WORK SHOWN ON THIS DRAWING SHALL NOT BE CARRIED OUT WITHOUT WRITTEN PERMISSION FROM THE OFFICE OF HYWEL JONES ARCHITECT LIMITED. THIS DRAWING IS THE EXCLUSIVE PROPERTY OF HYWEL JONES ARCHITECT LIMITED AND CAN ONLY BE REPRODUCED WITH PERMISSION.



existing houses

J

H

existing house

G

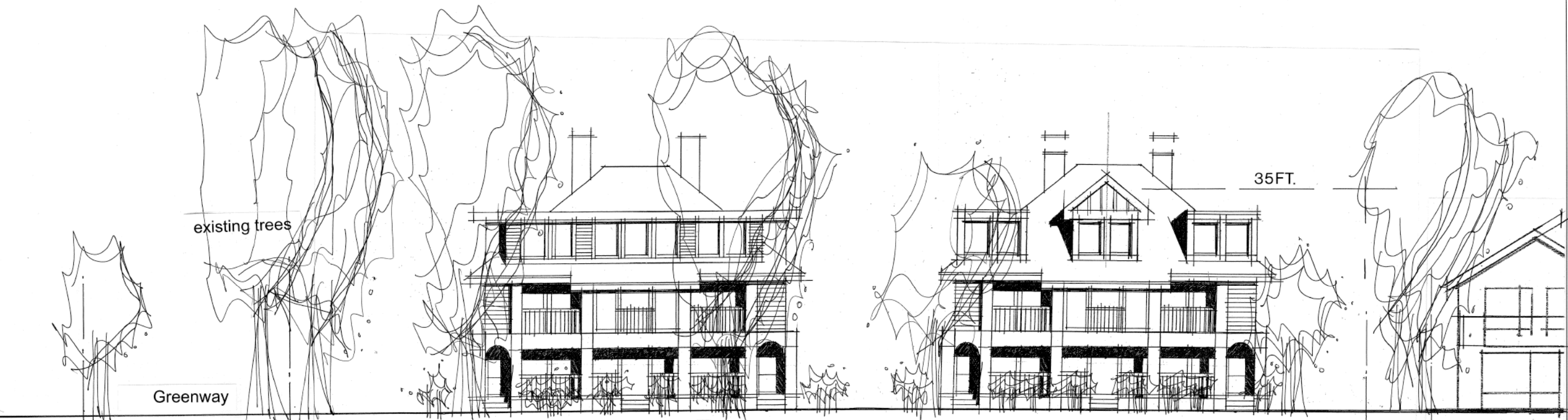
F

existing trees

Wales Street

south elevation

PROPOSED RESIDENTIAL DEVELOPMENT  
AT AVALON DAIRY,  
5808 WALES STREET, VANCOUVER, B.C.



existing trees

Greenway

35FT.

F

E

east elevation

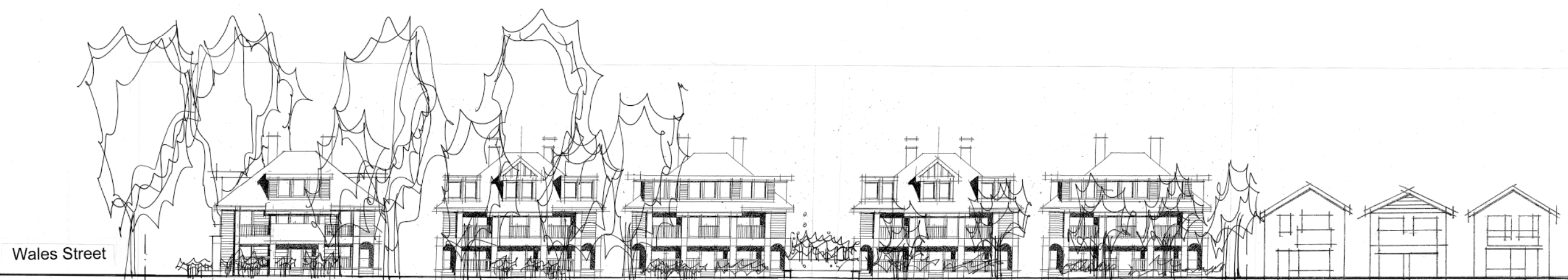
ELEVATION

**HYWEL  
JONES**  
ARCHITECT

2305 HEMLOCK STREET  
VANCOUVER, BRITISH COLUMBIA  
CANADA V6H 2V1  
(604)733-1599 (FAX)733-1522  
PROJECT 1137  
SCALE 1/16" = 1'-0"  
DATE JULY 25, 2012  
DRAWN RT  
CAD FILE 1137\_RZ\_A07  
PLOT DATE JULY 25, 2012

A7

COPYRIGHT RESERVED. THIS DRAWING MUST NOT BE SCALED. VARIATIONS AND MODIFICATIONS TO WORK SHOWN ON THIS DRAWING SHALL NOT BE CARRIED OUT WITHOUT WRITTEN PERMISSION FROM THE OFFICE OF HYWEL JONES ARCHITECT LIMITED. THIS DRAWING IS THE EXCLUSIVE PROPERTY OF HYWEL JONES ARCHITECT LIMITED AND CAN ONLY BE REPRODUCED WITH PERMISSION.



Wales Street

E

D

C

B

A

existing houses

north elevation



lane

35FT.

Greenway

A

J

west elevation

PROPOSED RESIDENTIAL DEVELOPMENT  
AT AVALON DAIRY,  
5808 WALES STREET, VANCOUVER, B.C.

ELEVATION

**HYWEL  
JONES**  
ARCHITECT

2305 HEMLOCK STREET  
VANCOUVER, BRITISH COLUMBIA  
CANADA V6H 2V1  
604733-1599 (FAX) 733-1522  
PROJECT 1137  
SCALE 1/16" = 1'-0"  
DATE JULY 25, 2012  
DRAWN RT  
CAD FILE 1137\_R2\_A08  
PLOT DATE JULY 25, 2012

A8