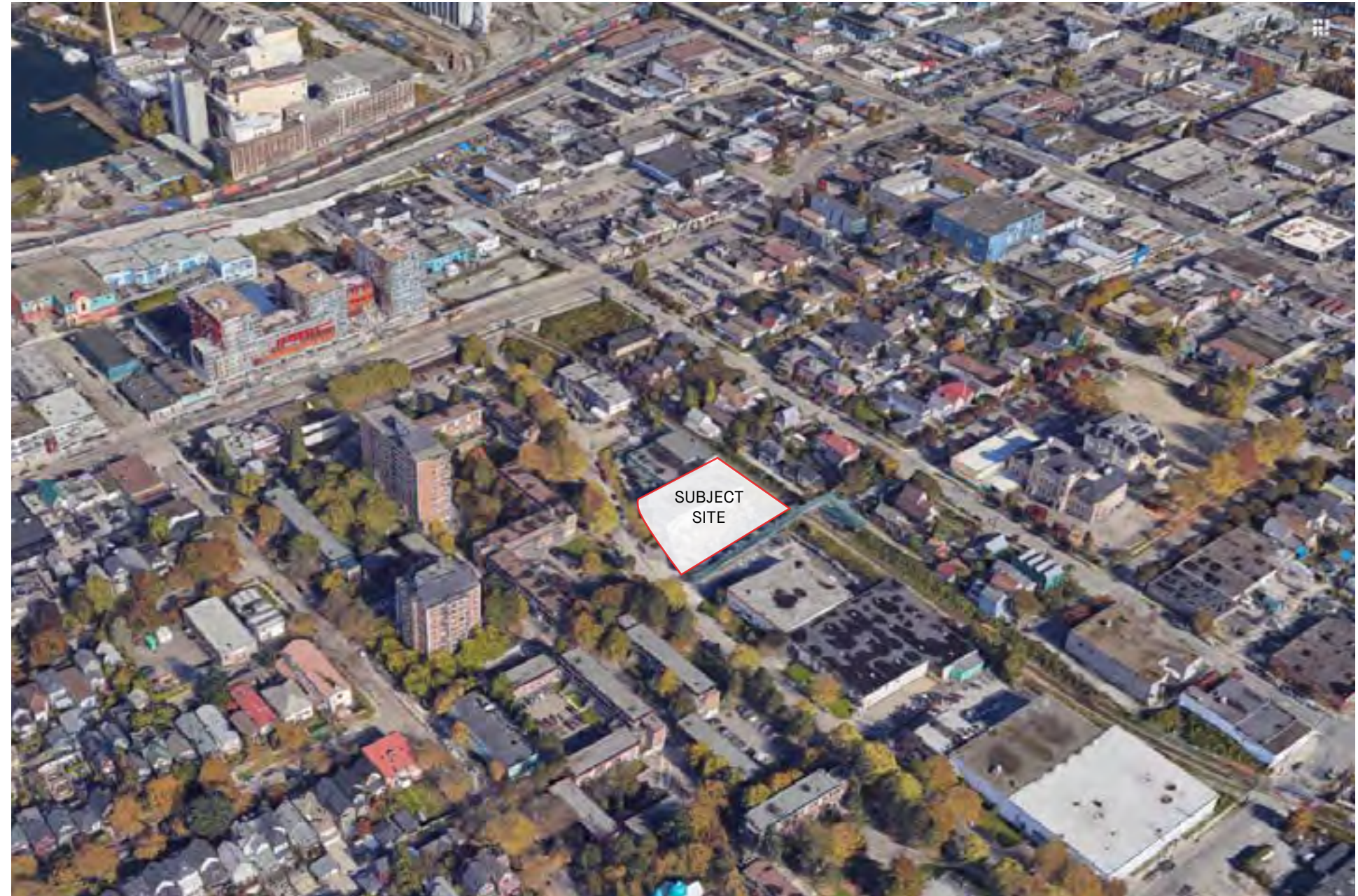


Site Context

The site is located on the northeastern side of the intersection of Keefer Street and Raymur Avenue, in an emergent location in the Kiwassa West Zone of the Downtown Eastside Plan.

The site borders an active rail line to the east, and the Stamps Place social housing development to the west. A pedestrian overpass that crosses above the rail line is located along the south of the site and an industrial commercial building abuts the site to the north. Ray-Cam Community Centre, and Admiral Seymour Elementary school provide nearby family amenities, while the busy Union / Venables bike route runs two blocks away. The rail corridor symbolically connects the site to the Port of Vancouver to the north, and is a reminder of the historical manufacturing roots of the area.



Site Photos



Pedestrian Overpass on Raymur Avenue south of site



View of site north of subject site



Viewing south east down Raymur Avenue towards site



View north from pedestrian overpass



View from site across Raymur Ave., viewing northwest



View of lot at Raymur Avenue and Pender Street