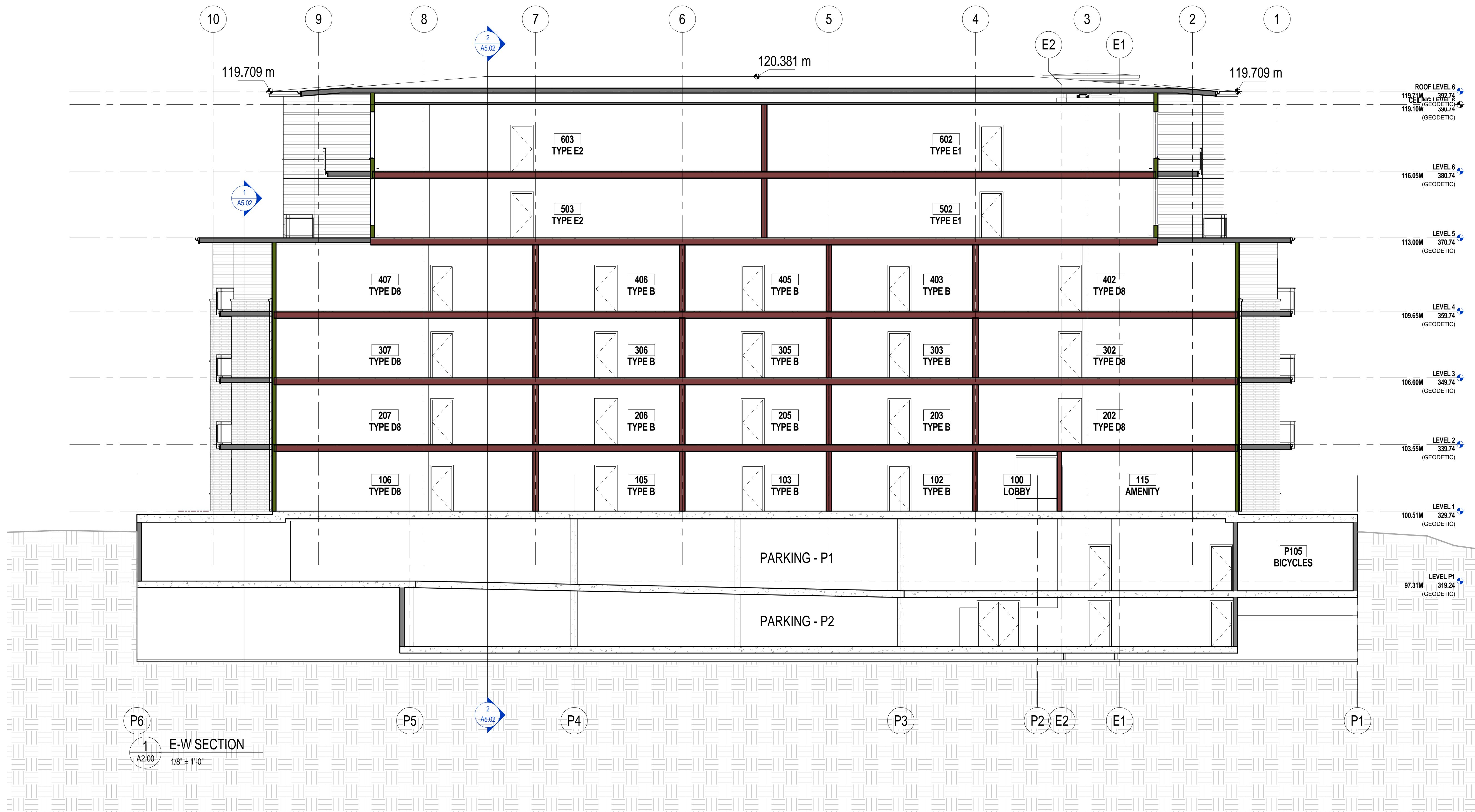


No.	Date	Revision Notes
A	12/18/2013	Issued For Rezoning



1
A2.00
E-W SECTION
1/8" = 1'-0"

PROGRESS PLOT 2013-12-16

Project Title
5129 to 5169 CAMBIE STREET
 Enter address here

Client/Owner
INTRACORP PROJECTS LTD.
 Suite 1450 - 1090 West Georgia Street
 Vancouver, B.C., V6E 3V7

Sheet Title
BUILDING SECTIONS

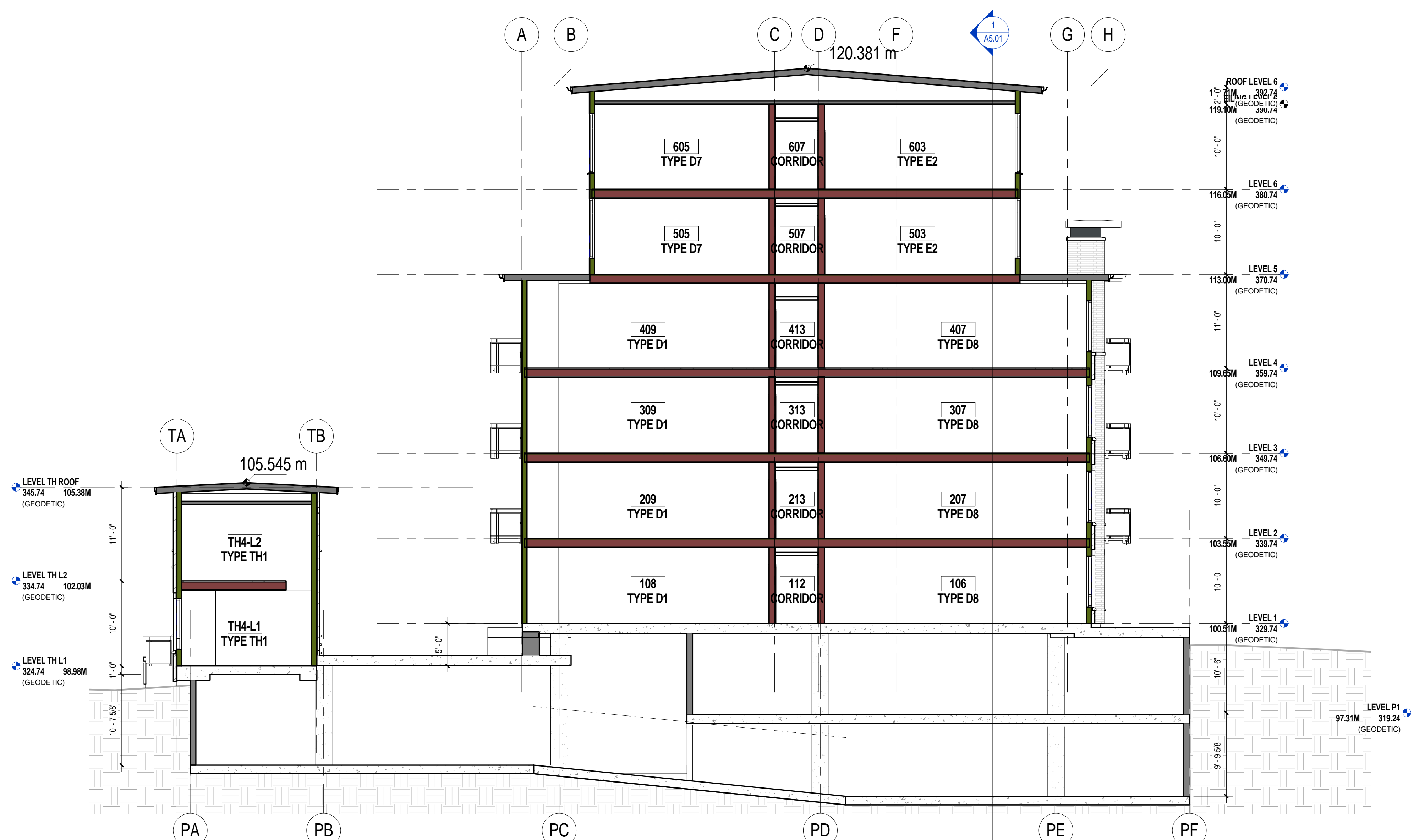
Drawn By	Author
Checked By	Checker
Reviewed by	Approver
Designed by	Designer
Submitted By	Author

Project Number
1310
 Plot Date: 13/12/2013 Issue Date: 13/12/2013
 Scale: 1/8" = 1'-0" Issue/Revision **A**

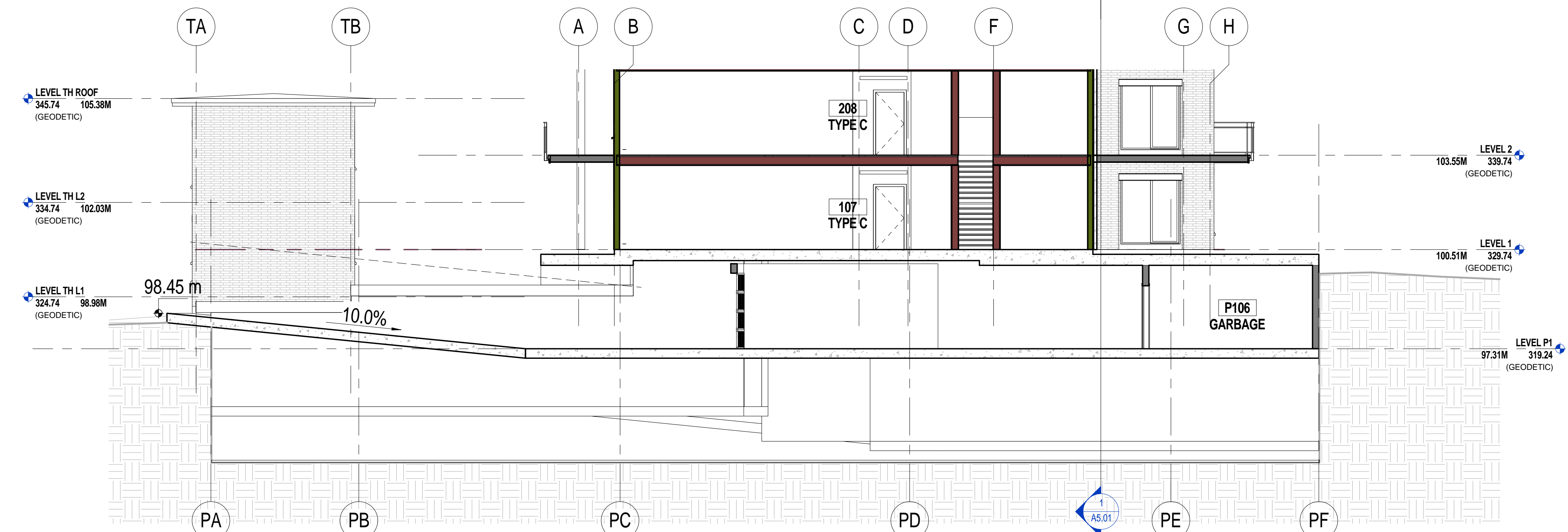
Sheet Number
A5.01
 of

This drawing is an instrument of service and the property of Shift Architecture Inc. and shall remain their property. The use of this drawing shall be restricted to the original site for which it was prepared and publication thereof is expressly limited to such use. Reuse, reproduction or publication by any method in whole or in part is prohibited without their written consent.

No.	Date	Revision Notes
A	12/18/2013	Issued For Rezoning
No.	Date	Revision Notes



2 N-S SECTION THROUGH RAMP
1/8" = 1'-0"



1 N-S SECTION THROUGH ENTRY RAMP
1/8" = 1'-0"

PROGRESS PLOT 2013-12-16

Project Title
5129 to 5169 CAMBIE STREET

Enter address here

Client/Owner
INTRACORP PROJECTS LTD.
Suite 1450 - 1090 West Georgia Street
Vancouver, B.C., V6E 3V7

Sheet Title
BUILDING SECTIONS

Drawn By	Author
Checked By	Checker
Reviewed by	Approver
Designed by	Designer
Submitted By	Author

Project Number
1310
Plot Date: 13/12/2013 Issue Date: 13/12/2013

Scale: **1/8" = 1'-0"** Issue/Revision **A**

Sheet Number
A5.02