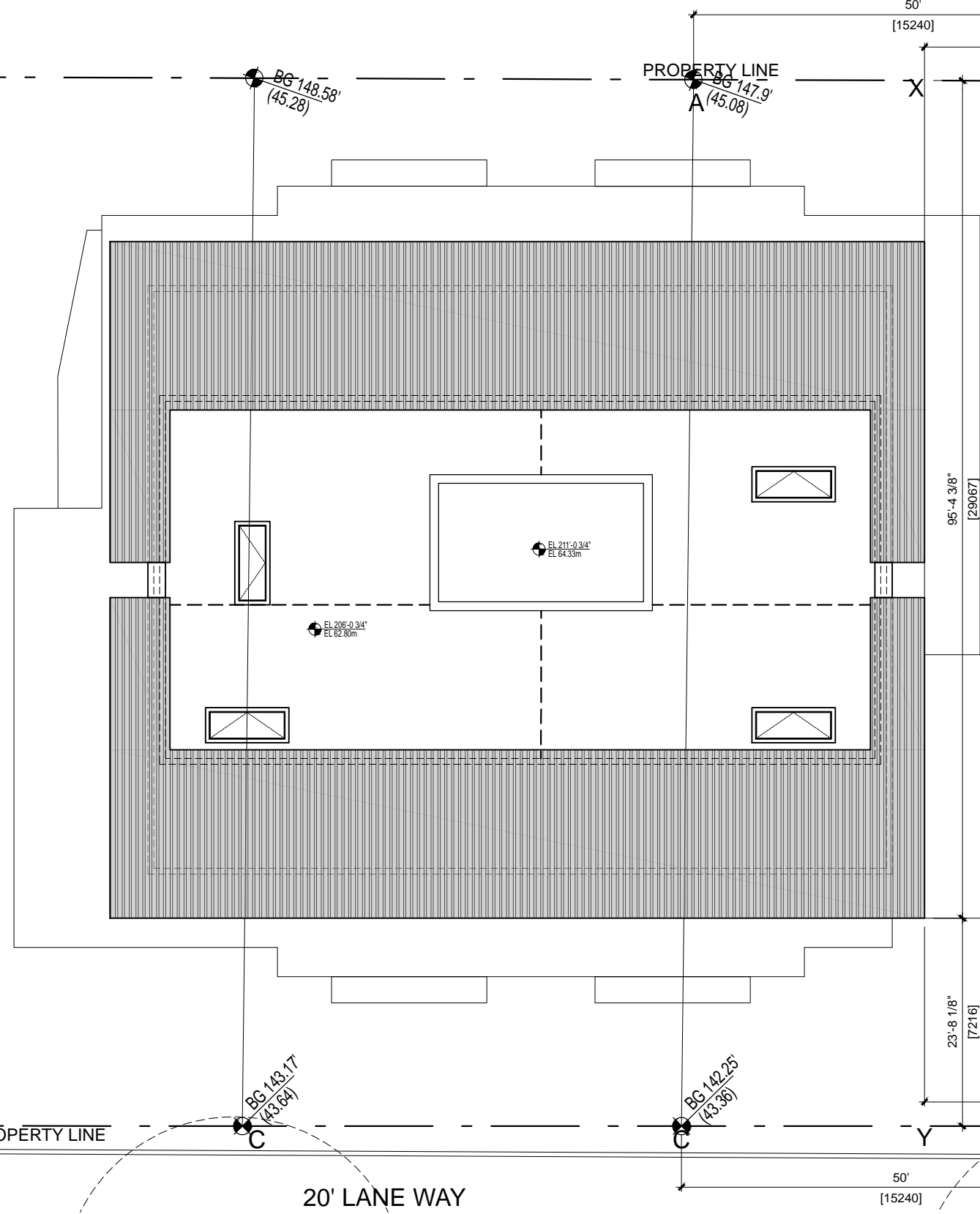


486-478-470
58th AVENUE W

58th AVENUE W



BG 148.55' (45.28)
BG 147.8' (45.05)
BG 146.7' (44.72)
BG 145' (44.20)
BG 144' (43.90)
CURB LINE
PROPERTY LINE
ANE WAY



EX TREE REMOVED
EX TREE REMOVED

BLOCK NO. 1005
RS-1 DISTRICT
ZONING

LOT 464

LOT 456

PROPERTY LINE

HEIGHT POINT A - POINT B
POINT Y / DISTANCE A TO B
% OF HEIGHT INCREASE FROM B
HEIGHT @ POINT X
 $45.08 - 44.92 = 0.16$
 $7.225 / 15.240 = 47\%$
 $47\% \times 0.16 = 0.0752$
 $0.0752 + 44.92 = 44.995$

HEIGHT POINT C - POINT D
POINT X / DISTANCE C TO D
% OF HEIGHT INCREASE FROM D
HEIGHT @ POINT Y
 $43.36 - 43.05 = 0.31$
 $6.806 / 15.240 = 44\%$
 $44\% \times 0.31 = 0.138$
 $0.138 + 43.05 = 43.188$

HEIGHT POINT X - POINT Y
POINT / DISTANCE X TO Y
% OF HEIGHT INCREASE FROM Y
HEIGHT @ POINT
 $44.995 - 43.188 = 1.807$
 $7.216 / 36.283 = 19.8\%$
 $19.8\% \times 1.807 = 0.357$
 $0.357 + 43.188 = 43.545$

HEIGHT OF BUILDING CORNER TO GRADE
GEODETIC ELEVATION POINT
 $20.903m (68'7")$
 $64.090m (210' 3-3/4")$

MAXIMUM GEODETIC ELEVATION 210' 3-3/4"
MAXIMUM GEODETIC ELEVATION 64.090m

REZONING SUBMISSION

#486, #478, #470 WEST 58th Ave
Project No: 21619

Title: HEIGHT OF BUILDING

Scale: N.T.S

Date: 10/28/2016

FRANCL
ARCHITECTURE



This drawing as an instrument of service is the property of Francl Architecture and may not be reproduced without the firm's permission. All information shown on the drawing is for the use in this specific project only and shall not be used otherwise without written permission from this office. Contractors shall verify and be responsible for all dimensions on the job and this office shall be informed of any discrepancies and variations shown on this drawing. Do not scale drawings.

A105