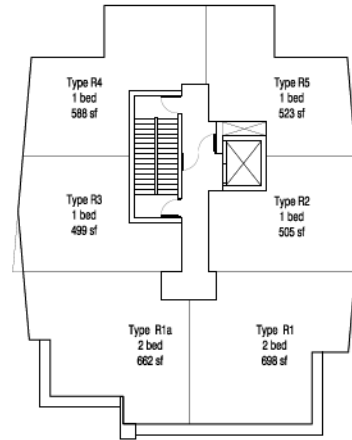


**UNIT SUMMARY  
(BUILDING C) Level 4**

Type	# /Level	Area
R1	1	698 sf
R1a	1	662 sf
R2	1	505 sf
R3	1	499 sf
R4	1	588 sf
R5	1	523 sf
<b>total units</b>	<b>6</b>	

**4 LEVEL 4 PLAN**  
SCALE: 1/8" = 1'-0"

GROSS AREA: 4,054 sf

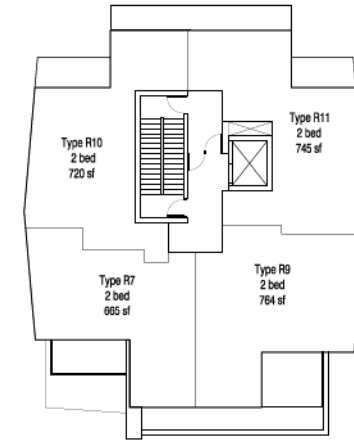


**UNIT SUMMARY  
(BUILDING C) Level 5**

Type	# /Level	Area
R1	1	698 sf
R1a	1	662 sf
R2	1	505 sf
R3	1	499 sf
R4	1	588 sf
R5	1	523 sf
<b>total units</b>	<b>6</b>	

**5 LEVEL 5 PLAN**  
SCALE: 1/8" = 1'-0"

GROSS AREA: 4,054 sf

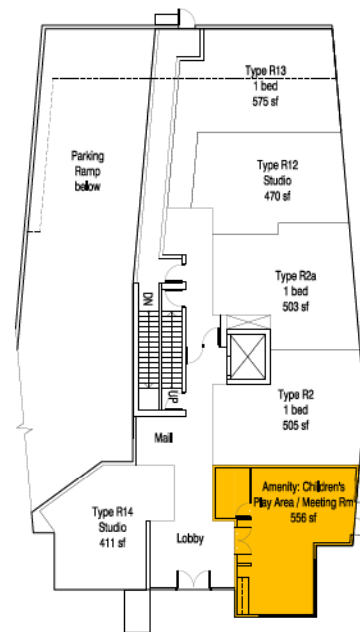


**UNIT SUMMARY  
(BUILDING C) Level 6**

Type	# /Level	Area
R7	1	665 sf
R9	1	764 sf
R10	1	720 sf
R11	1	745 sf
<b>total units</b>	<b>4</b>	

**5 LEVEL 6 PLAN**  
SCALE: 1/8" = 1'-0"

GROSS AREA: 3,445 sf

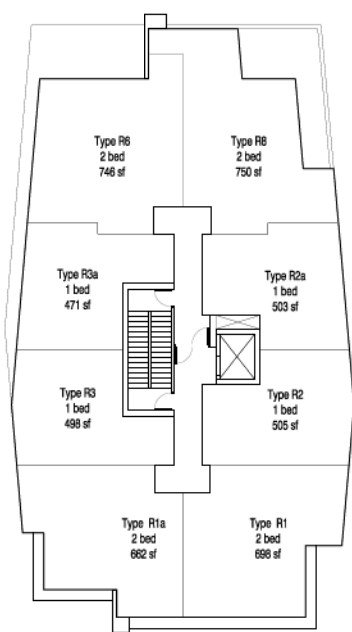


**UNIT SUMMARY  
(BUILDING C) Level 1**

Type	# /Level	Area
R2	1	505 sf
R2a	1	477 sf
R12	1	470 sf
R13	1	575 sf
R14	1	411 sf
<b>total units</b>	<b>5</b>	

**1 LEVEL 1 PLAN**  
SCALE: 1/8" = 1'-0"

GROSS AREA: 4,304 sf

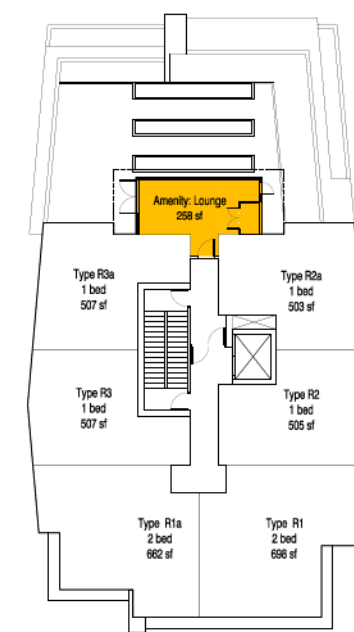


**UNIT SUMMARY  
(BUILDING C) Level 2**

Type	# /Level	Area
R1	1	698 sf
R1a	1	662 sf
R2	1	505 sf
R2a	1	503 sf
R3	1	498 sf
R3a	1	471 sf
R6	1	746 sf
R8	1	750 sf
<b>total units</b>	<b>8</b>	

**2 LEVEL 2 PLAN**  
SCALE: 1/8" = 1'-0"

GROSS AREA: 5,531 sf



**UNIT SUMMARY  
(BUILDING C) Level 3**

Type	# /Level	Area
R1	1	698 sf
R1a	1	662 sf
R2	1	505 sf
R2a	1	503 sf
R3	1	498 sf
R3a	1	477 sf
<b>total units</b>	<b>6</b>	

**3 LEVEL 3 PLAN**  
SCALE: 1/8" = 1'-0"

GROSS AREA: 4,277 sf

CONSULTANTS:

DATE:

DRAWING ISSUED FOR:	DATE ISSUED:	BY:
FOR PER RECORDING	MAY 09, 2012	DDP
RE-ISSUED FOR RECORDING	SEP 11, 2012	DDP

CLIENT:

**Intergulf  
Development Group**  
P.O. BOX 11125  
Suite 1750 - 1055 West Georgia Street  
Vancouver, BC, V6E 3P3

PROJECT TITLE:

**4500 Cambie Street**  
4500 Cambie Street  
Vancouver, BC

DRAWING TITLE:

**Building C - Plans**

DATE:

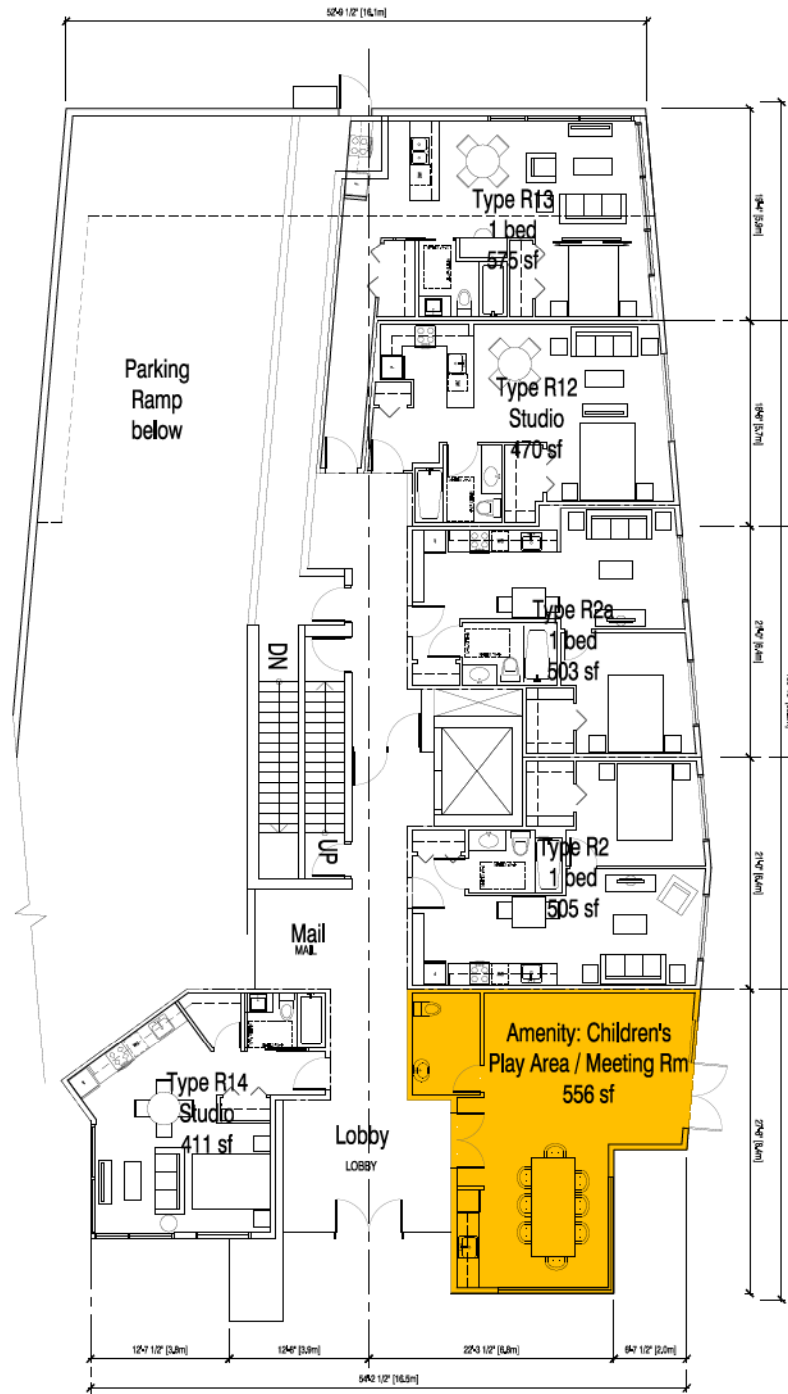
DRAWN BY:	DATE:
---	---
JOB NUMBER: 1119	---
REVISION NO.: ---	---
SCALE: ---	---
FILE NAME: ---	---

SHEET NO.:



**DP2.30**

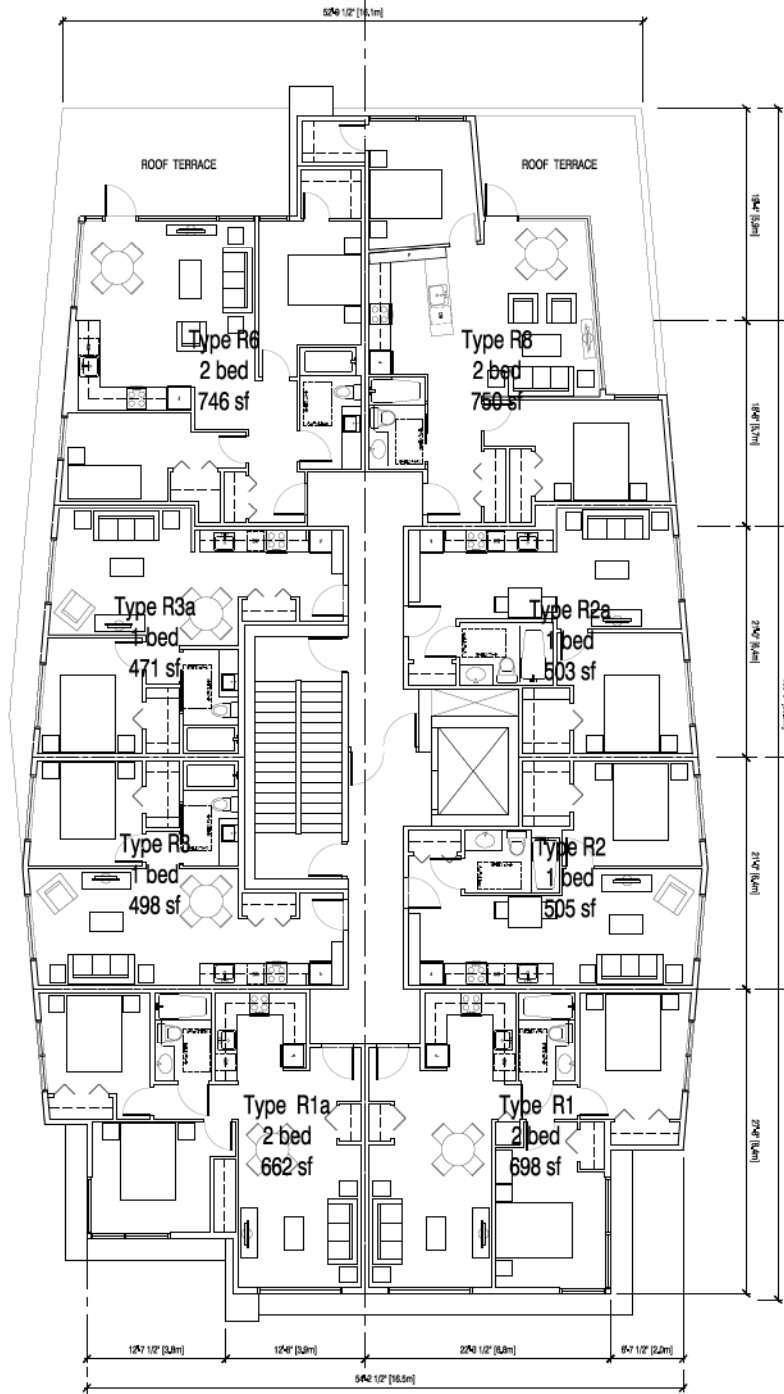
CONSULTANTS:



1 Level 1 Plan  
SCALE: 1/8" = 1'-0"

UNIT SUMMARY (BUILDING C) Level 1		
Type	# /Level	Area
R2	2	514 sf
R7	1	556 sf
R12	1	487 sf
R13	1	576 sf
R14	1	411 sf
total units		6

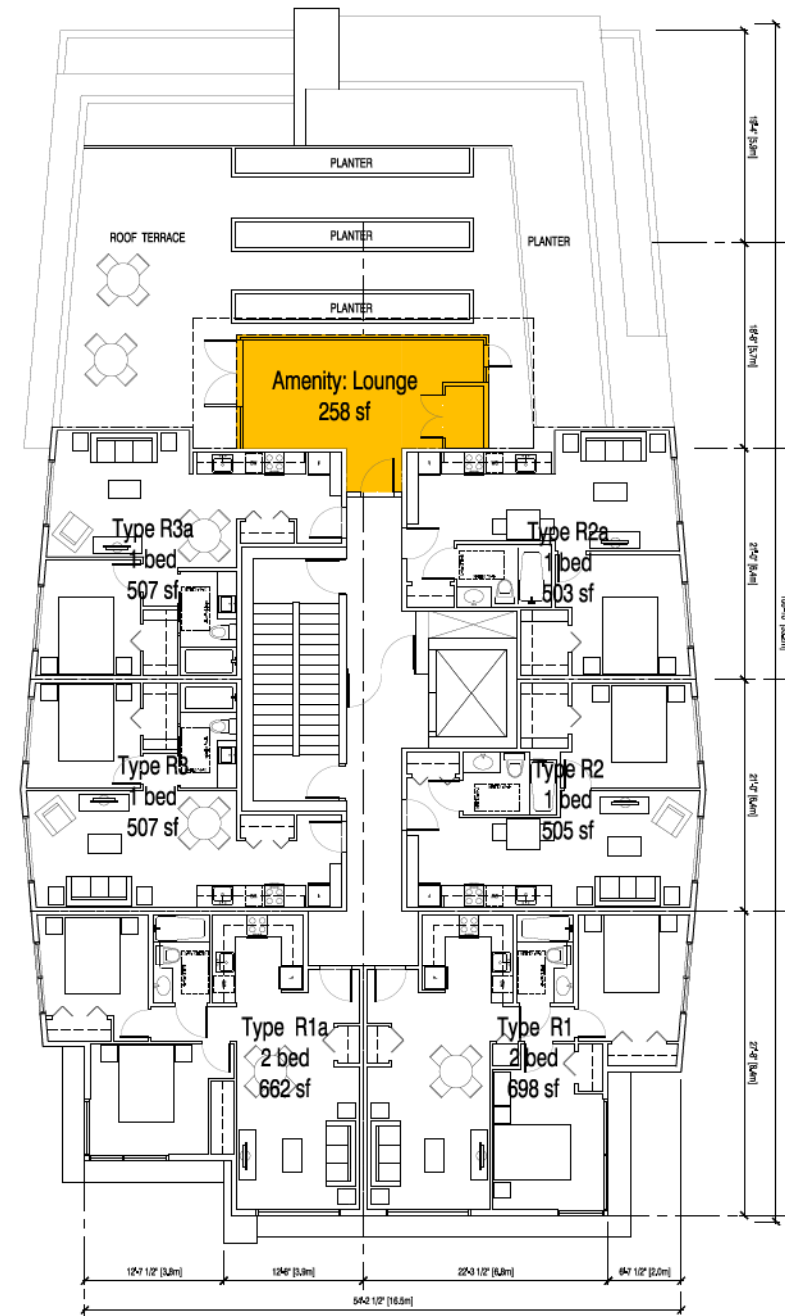
GROSS AREA: 4330 sf



2 Level 2 Plan  
SCALE: 1/8" = 1'-0"

UNIT SUMMARY (BUILDING C) Level 2		
Type	# /Level	Area
R1	1	698 sf
R1a	1	662 sf
R2	2	514 sf
R3	2	507 sf
R6	1	757 sf
R8	1	780 sf
total units		8

GROSS AREA: 5591 sf



3 Level 3 Plan  
SCALE: 1/8" = 1'-0"

UNIT SUMMARY (BUILDING C) Level 3		
Type	# /Level	Area
R1	1	698 sf
R1a	1	662 sf
R2	2	514 sf
R3	2	507 sf
total units		6

GROSS AREA: 4258 sf

DATE	BY
ISSUED FOR RECORDING	MAY 09, 2012
REVISED FOR RECORDING	MAY 11, 2012

CLIENT  
**Intergulf Development Group**  
P.O. BOX 11125  
Suite 1750 - 1055 West Georgia Street  
Vancouver, BC, V6E 3P3

PROJECT TITLE  
**4500 Cambie Street**  
4500 Cambie Street  
Vancouver, BC

DRAWING TITLE  
**Building C - Plans  
Rental Building**

DATE	BY
ISSUED FOR RECORDING	MAY 09, 2012
REVISED FOR RECORDING	MAY 11, 2012



SHEET NO.  
**DP2.31**

CONSULTANT:

DATE:

DRAWING ISSUED FOR: DATE ISSUED: BY:  
FOR REVIEW: MAY 09, 2012 DDK  
REVISED FOR RECORD: OCT 11, 2012 DDK

CLIENT:  
**Intergulf  
Development Group**  
P.O. BOX 11125  
Suite 1750 - 1055 West Georgia Street  
Vancouver, BC, V6E 3P3

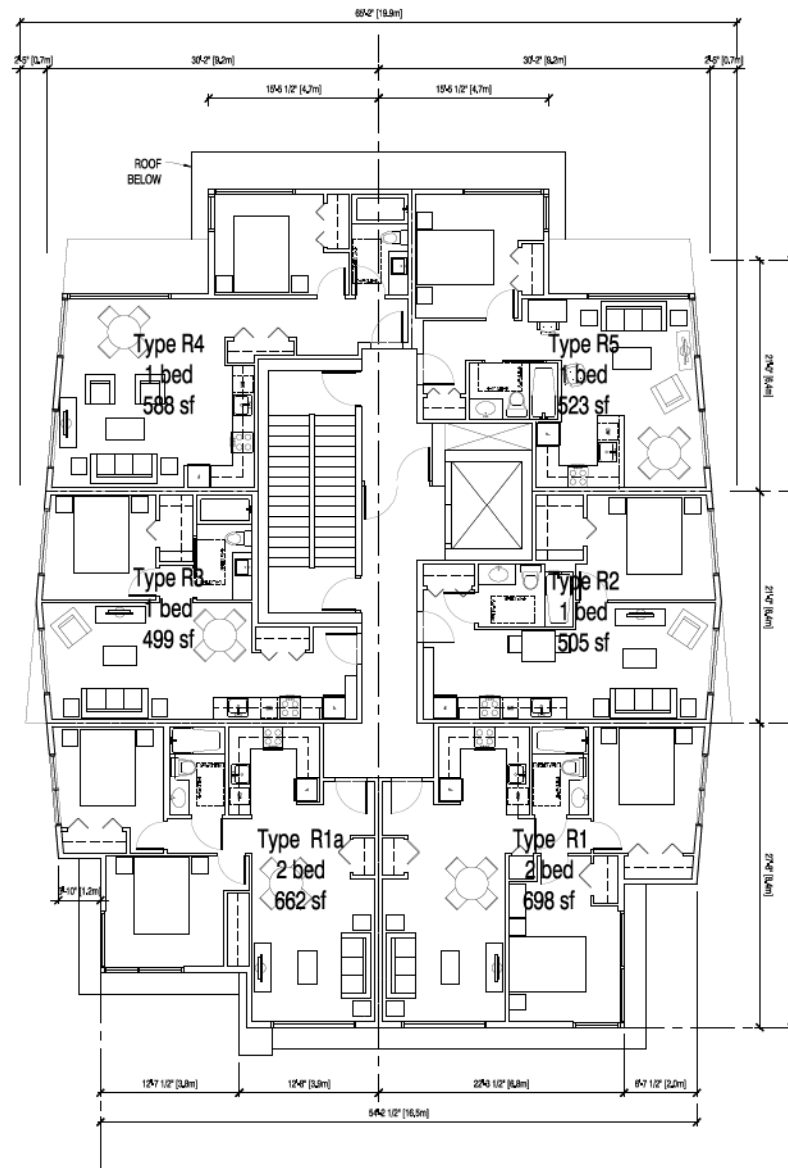
PROJECT TITLE:  
**4500 Cambie Street**  
4500 Cambie Street  
Vancouver, BC

DRAWING TITLE:  
**Building C - Plans  
Rental Building**

DATE:  
NORTH ARROW: DRAWN BY: -  
JOB NUMBER: 1119  
REVISION NO.: -  
SCALE: -  
FILE NAME: -

SHEET NO.:

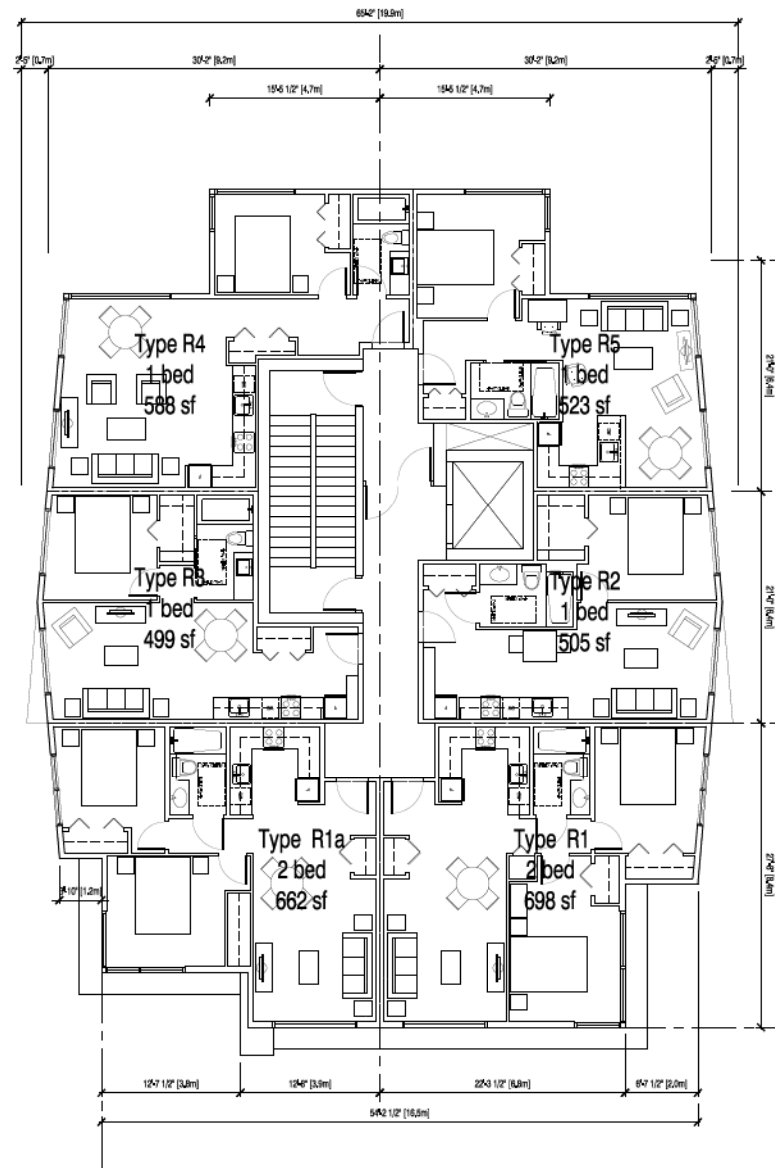
**DP2.32**



1 Level 4 Plan  
SCALE: 1/8" = 1'-0"

UNIT SUMMARY (BUILDING C) Level 4			
Type	#/Level	Area	
R1	1	698 sf	
R1a	1	662 sf	
R2	1	514 sf	
R2a	1	566 sf	
R3	1	507 sf	
R3a	1	552 sf	
total units		6	

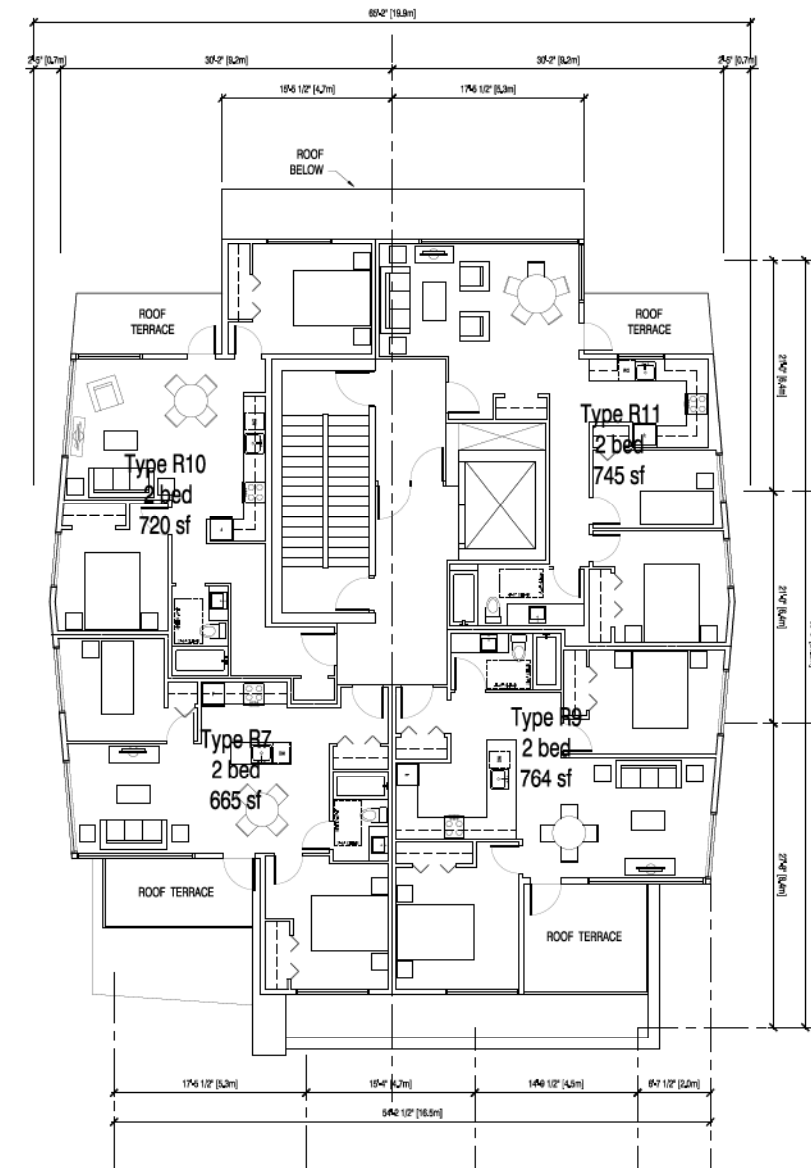
GROSS AREA: 4099 sf



2 Level 5 Plan  
SCALE: 1/8" = 1'-0"

UNIT SUMMARY (BUILDING C) Level 5			
Type	#/Level	Area	
R1	1	698 sf	
R1a	1	662 sf	
R2	1	514 sf	
R2a	1	566 sf	
R3	1	507 sf	
R3a	1	552 sf	
total units		6	

GROSS AREA: 4099 sf



3 Level 6 Plan  
SCALE: 1/8" = 1'-0"

UNIT SUMMARY (BUILDING C) Level 6			
Type	#/Level	Area	
R10a	1	691 sf	
R11a	1	778 sf	
R15	1	674 sf	
R16	1	701 sf	
total units		4	

GROSS AREA: 3425 sf