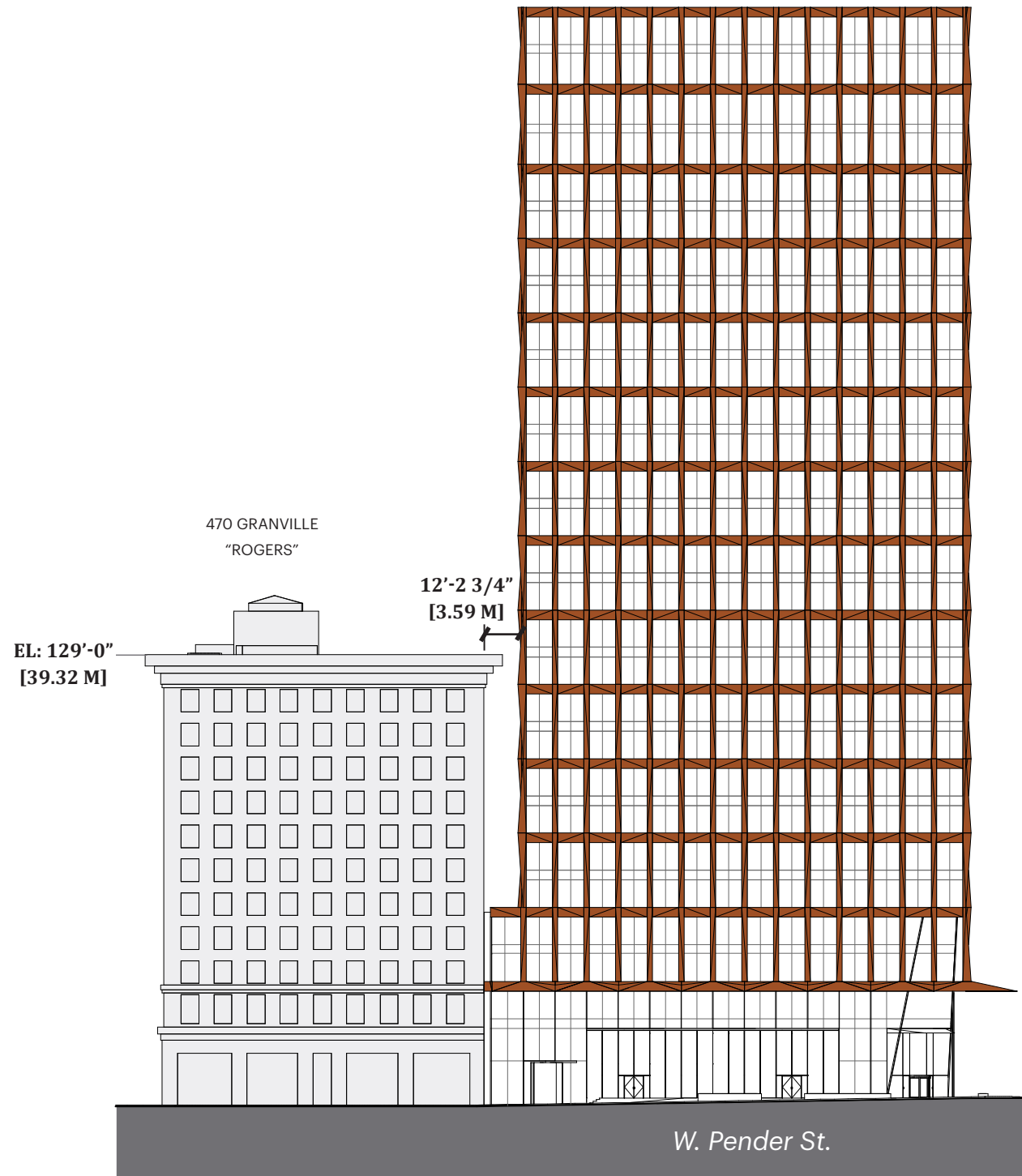
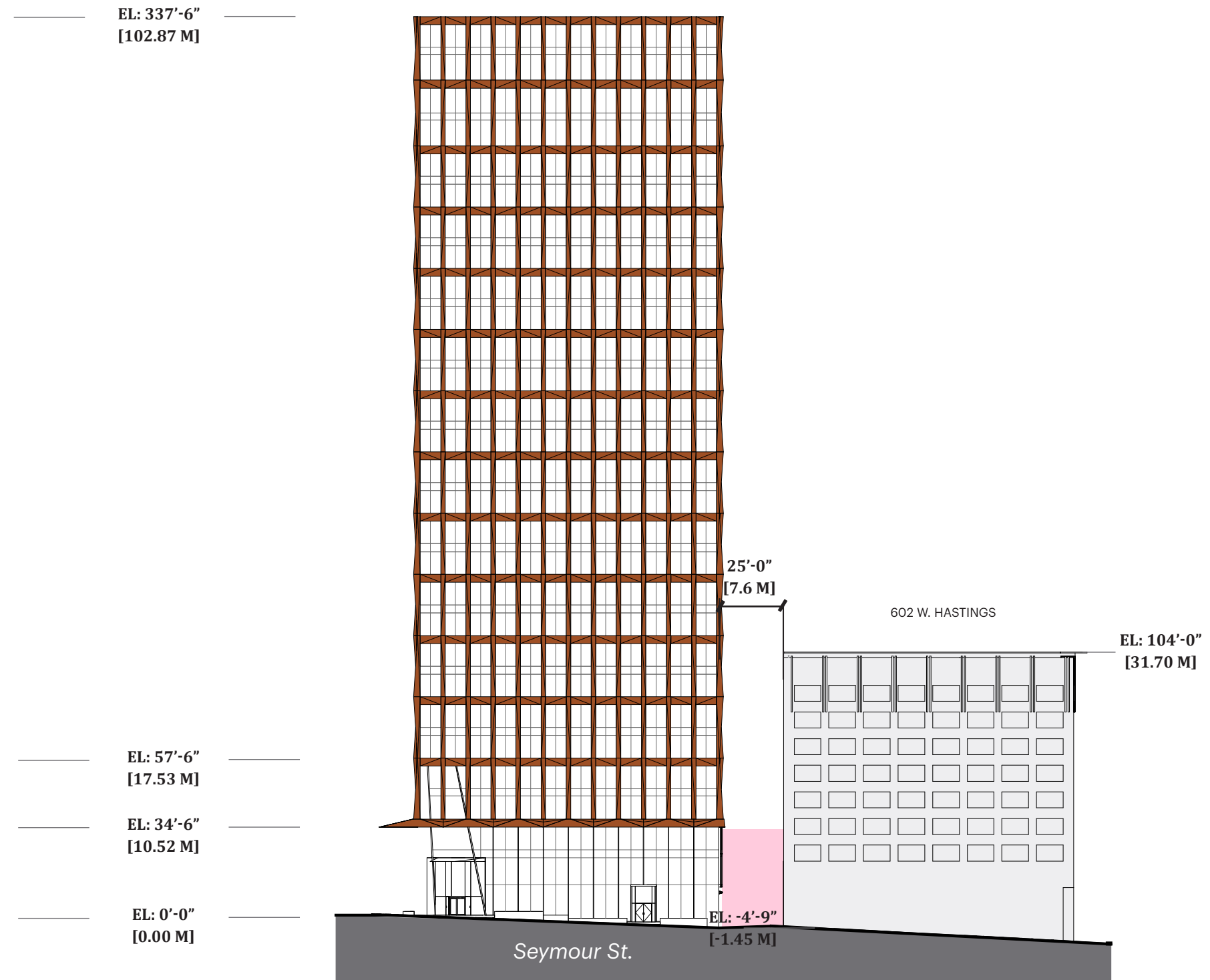


W. Pender St. & Seymour Elevations

South



East



470 GRANVILLE
"ROGERS"
EL: 129'-0"
[39.32 M]
12'-2 3/4"
[3.59 M]

EL: 337'-6"
[102.87 M]

EL: 57'-6"
[17.53 M]

EL: 34'-6"
[10.52 M]

EL: 0'-0"
[0.00 M]

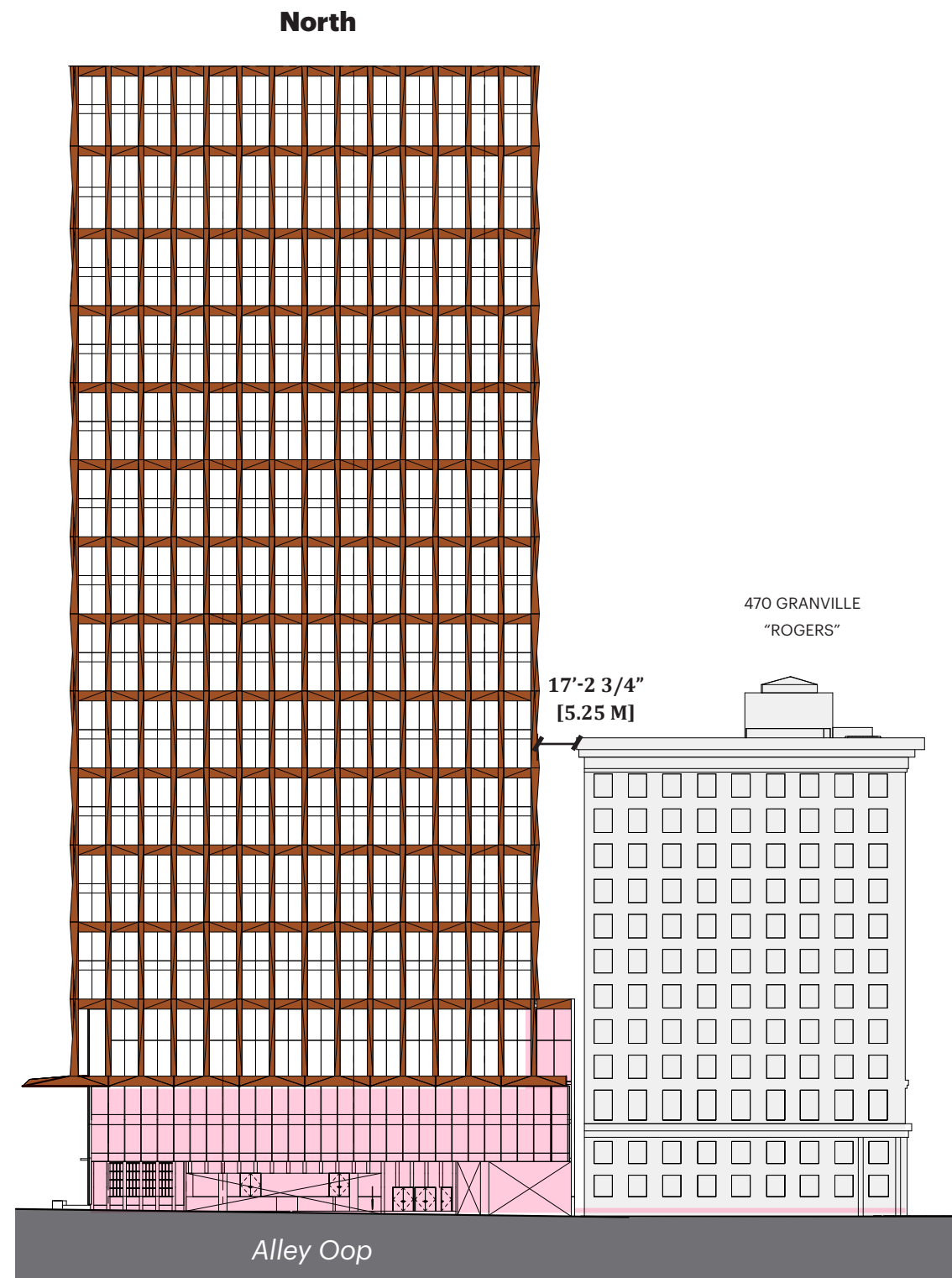
25'-0"
[7.6 M]
602 W. HASTINGS
EL: 104'-0"
[31.70 M]

EL: -4'-9"
[-1.45 M]

W. Pender St.

Seymour St.

Alley Oop & Granville Elevations



EL: 337'-6"
[102.87 M]

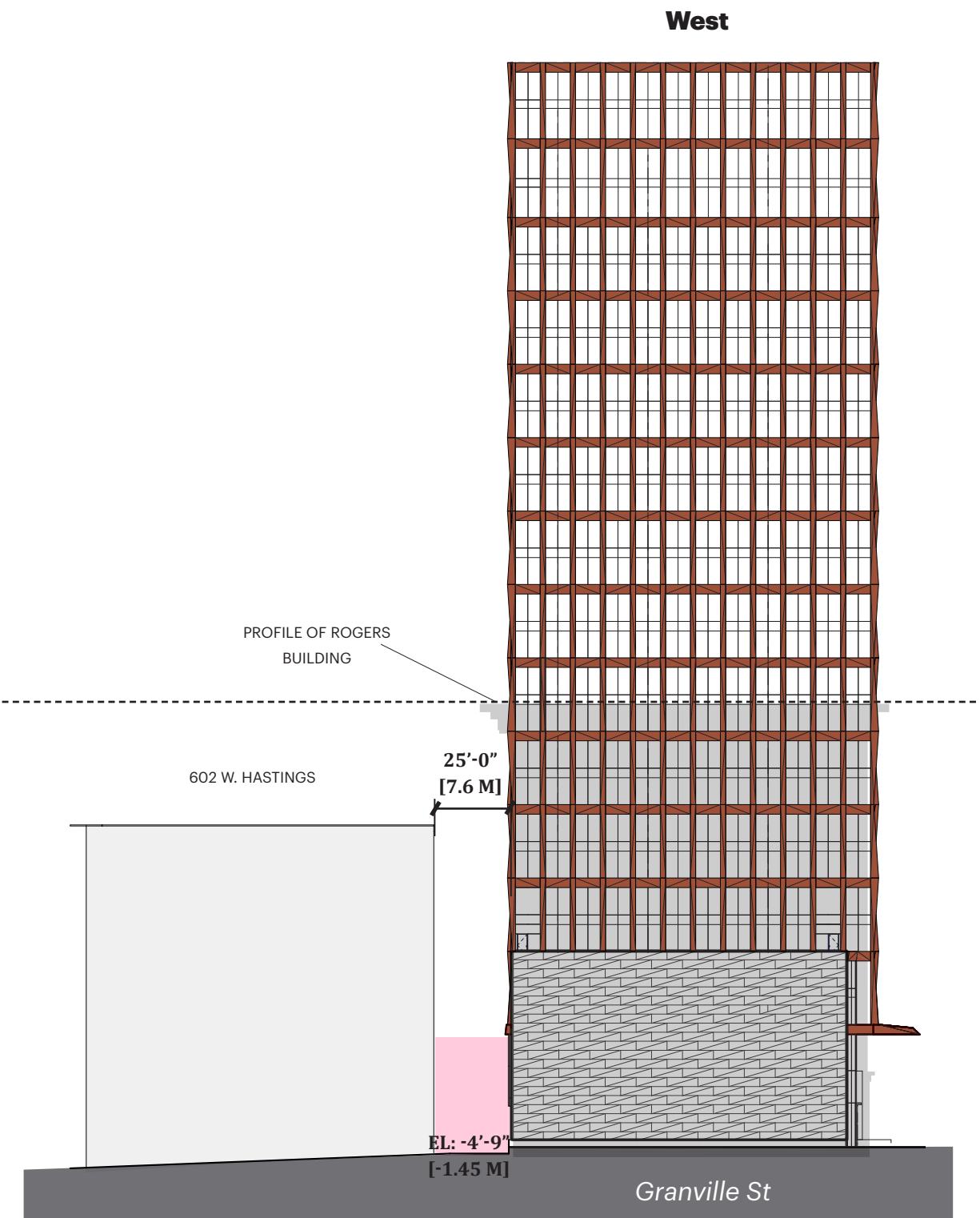
EL: 104'-0"
[31.70 M]

EL: 104'-0"
[31.70 M]

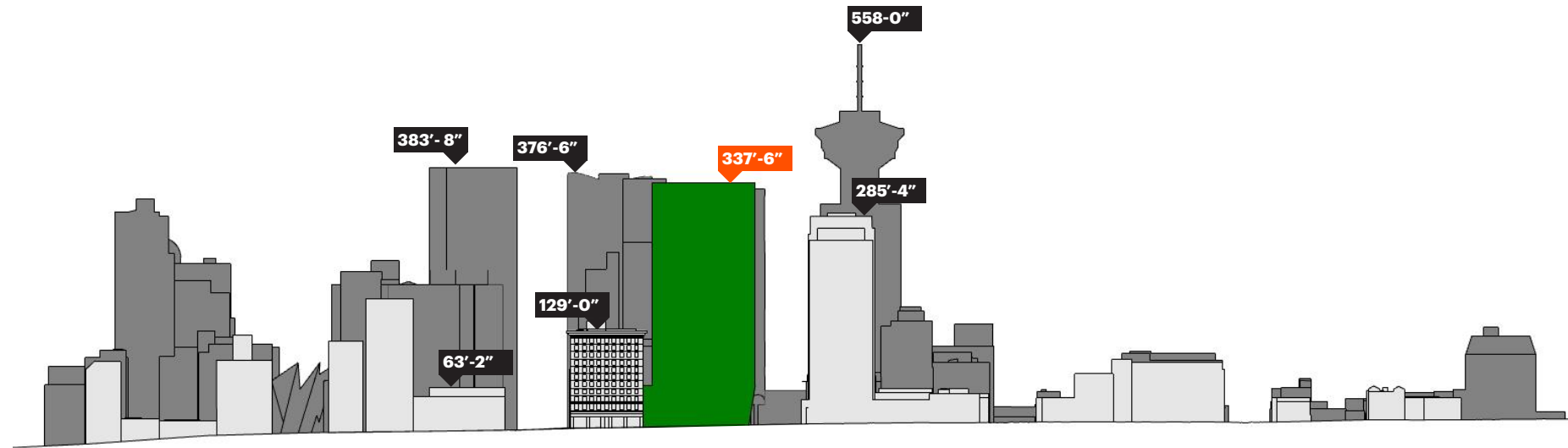
EL: 57'-6"
[17.53 M]

EL: 34'-6"
[10.52 M]

EL: 0'-0"
[0.00 M]



Context Sections



W. Pender St. Streetscape



Seymour St. Streetscape