

**Allan  
Diamond  
Architect**

1807 Fir Street  
Vancouver, B.C.  
V6J 3A9  
tel 604 - 734-2004  
fax 604 - 738-8842  
www.allandiamondarchitect.com

**Copyright Reserved.**  
This Drawing and Design are and at all times remain the exclusive property of Allan Diamond Architect and may not be used or reproduced without the Architect's consent. Written dimensions shall have precedence over scaled dimensions. The Contractor shall verify all dimensions on the job and shall be responsible for notifying the Architect of any variations between job conditions and conditions shown on the drawing.

Job No: 011-60

**PROPOSED  
MIXED USE BUILDING  
4320 SLOCAN STREET**

RE-ISSUED CONCURRENT RZ/DE  
2012-08-10  
ISSUED FOR U.D.P.  
2012-06-22  
ISSUED CONCURRENT RZ/DE  
2012-05-15  
ISSUED REZONING  
2012-02-22  
S.T.I.R. DEADLINE  
2011-12-14  
ISSUED OFFICIAL INQUIRY  
2011-09-27

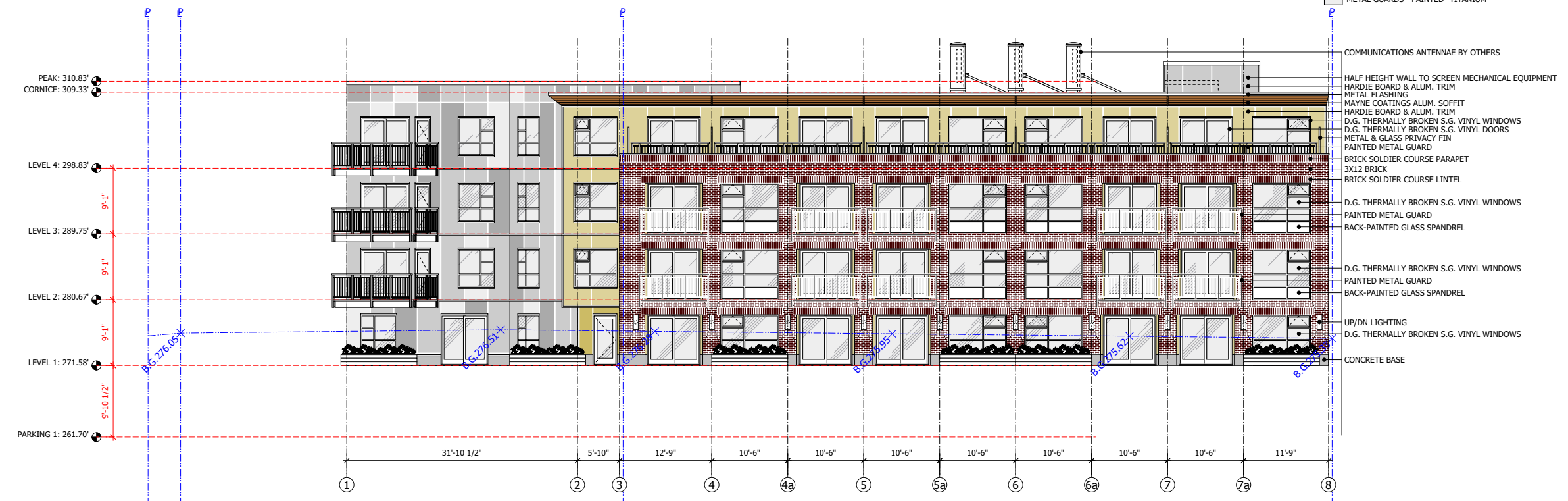
Revisions / Submissions:  
Drawn: GOE  
Date Printed: 2012-08-10  
Scale: 1/8" = 1FT.  
Checked:  
Drawing Title:

**ELEVATIONS**

**A-400**



**WEST ELEVATION**  
Scale: 1/8" = 1'-0"



**EAST ELEVATION**  
Scale: 1/8" = 1'-0"

- BRICK - MUTUAL MATERIALS "MAUNA LOA MISSION"
- SOFFIT - MAYNE COATINGS LONGBOARD "DARK FIR"
- HARDIE PANEL - HARDIE COLORPLUS "TUSCAN GOLD"
- HARDIE PANEL - HARDIE COLORPLUS "HARRIS CREAM"
- HARDIE PANEL - HARDIE COLORPLUS "NAVAJO BEIJE"
- HARDIE PANEL - HARDIE COLORPLUS "TIMBER BARK"
- HARDIE PANEL - HARDIE COLORPLUS "MONTEREY TAUPE"
- HARDIE PANEL - HARDIE COLORPLUS "COBBLE STONE"
- METAL GUARDS AND CANOPIES - PAINTED BLACK
- METAL GUARDS - PAINTED "TITANIUM"

- COMMUNICATIONS ANTENNAE BY OTHERS
- HALF HEIGHT WALL TO SCREEN MECHANICAL EQUIPMENT
- HARDIE BOARD & ALUM. TRIM
- METAL FLASHING
- MAYNE COATINGS ALUM. SOFFIT
- HARDIE BOARD & ALUM. TRIM
- D.G. THERMALLY BROKEN S.G. VINYL WINDOWS
- D.G. THERMALLY BROKEN S.G. VINYL DOORS
- METAL & GLASS PRIVACY FIN
- PAINTED METAL GUARD
- BRICK SOLDIER COURSE PARAPET
- 3X12 BRICK
- BRICK SOLDIER COURSE LINTEL
- D.G. THERMALLY BROKEN S.G. VINYL WINDOWS
- PAINTED METAL GUARD
- BACK-PAINTED GLASS SPANDREL
- LEVEL 4: 298.83'
- BRICK SOLDIER COURSE PARAPET
- 3X12 BRICK
- BRICK SOLDIER COURSE LINTEL
- D.G. THERMALLY BROKEN S.G. VINYL WINDOWS
- PAINTED METAL GUARD
- BACK-PAINTED GLASS SPANDREL
- LEVEL 3: 289.75'
- LEVEL 2: 280.67'
- LEVEL 1: 271.58'
- UP/DN LIGHTING
- METAL SCREEN
- ALUMINIUM STOREFRONT GLAZING
- METAL OVERHEAD GARAGE DOOR
- CONCRETE BASE
- PARKING 1: 261.70'

- METAL FLASHING
- HARDIE BOARD & ALUM. TRIM
- PAINTED METAL SOLAR SHADE
- D.G. THERMALLY BROKEN S.G. VINYL WINDOWS
- PAINTED METAL GUARD
- THROUGH-WALL FLASHING
- PAINTED METAL SOLAR SHADE
- D.G. THERMALLY BROKEN S.G. VINYL WINDOWS
- PAINTED METAL AND GLASS CANOPIES OVER COMMERCIAL UNITS
- ALUMINIUM STOREFRONT GLAZING
- UP/DN LIGHTING
- CONCRETE BASE

- COMMUNICATIONS ANTENNAE BY OTHERS
- HALF HEIGHT WALL TO SCREEN MECHANICAL EQUIPMENT
- HARDIE BOARD & ALUM. TRIM
- METAL FLASHING
- MAYNE COATINGS ALUM. SOFFIT
- HARDIE BOARD & ALUM. TRIM
- D.G. THERMALLY BROKEN S.G. VINYL WINDOWS
- D.G. THERMALLY BROKEN S.G. VINYL DOORS
- METAL & GLASS PRIVACY FIN
- PAINTED METAL GUARD
- BRICK SOLDIER COURSE PARAPET
- 3X12 BRICK
- BRICK SOLDIER COURSE LINTEL
- D.G. THERMALLY BROKEN S.G. VINYL WINDOWS
- PAINTED METAL GUARD
- BACK-PAINTED GLASS SPANDREL
- D.G. THERMALLY BROKEN S.G. VINYL WINDOWS
- PAINTED METAL GUARD
- BACK-PAINTED GLASS SPANDREL
- UP/DN LIGHTING
- D.G. THERMALLY BROKEN S.G. VINYL WINDOWS
- CONCRETE BASE

Copyright Reserved.

This Drawing and Design are and at all times remain the exclusive property of Allan Diamond Architect and may not be used or reproduced without the Architect's consent. Written dimensions shall have precedence over scaled dimensions. The Contractor shall verify all dimensions on the job and shall be responsible for notifying the Architect of any variations between job conditions and conditions shown on the drawing.

Job No: 011-60

PROPOSED  
MIXED USE BUILDING  
4320 SLOCAN STREET

RE-ISSUED CONCURRENT RZ/DE  
2012-08-10  
ISSUED FOR U.D.P.  
2012-06-22  
ISSUED CONCURRENT RZ/DE  
2012-05-15  
ISSUED REZONING  
2012-02-22  
S.T.I.R. DEADLINE  
2011-12-14  
ISSUED OFFICIAL INQUIRY  
2011-09-27

Revisions / Submissions:

Drawn: GOE

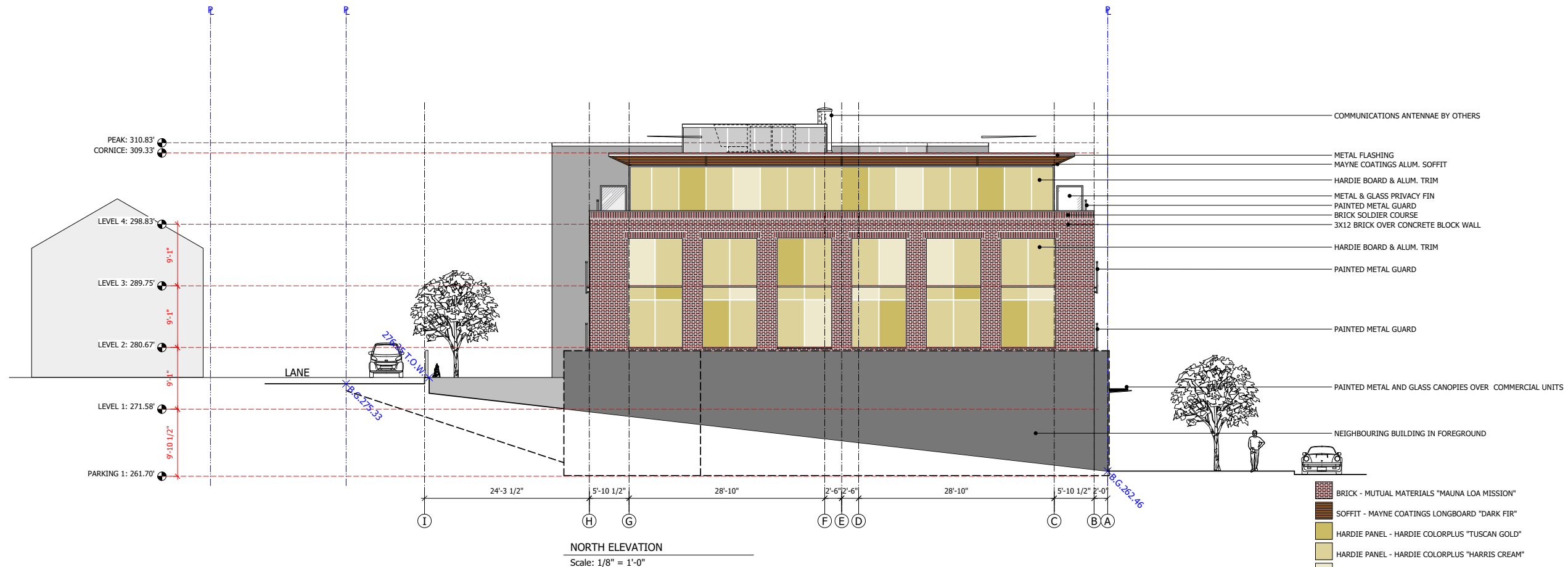
Date Printed: 2012-08-10

Scale: 1/8" = 1FT.

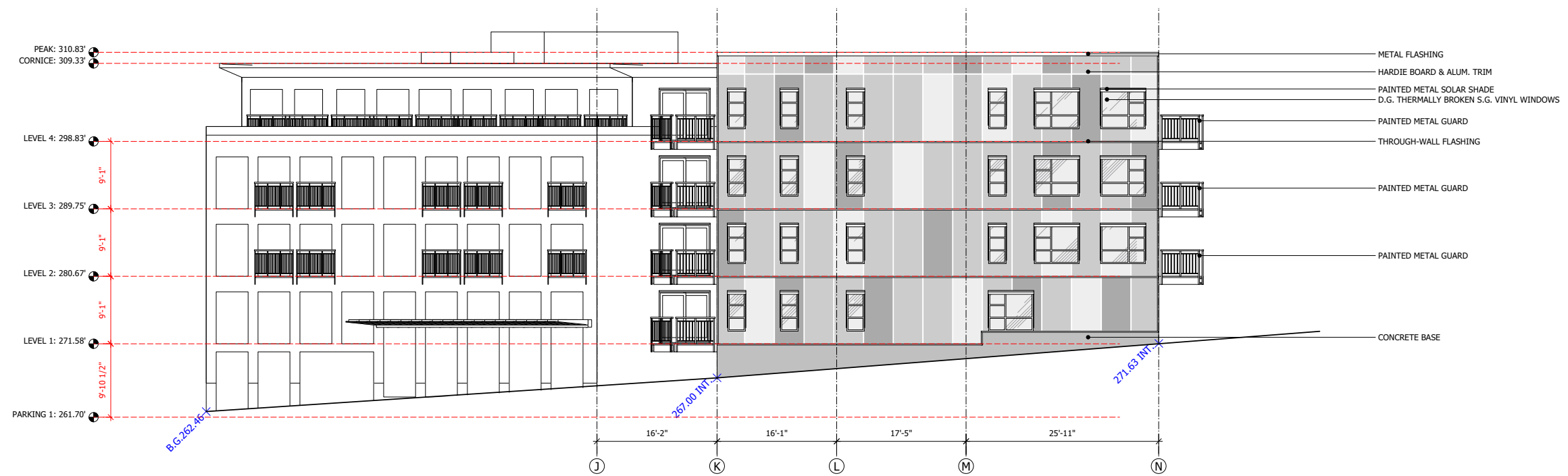
Checked:

Drawing Title:

ELEVATIONS



NORTH ELEVATION  
Scale: 1/8" = 1'-0"



SOUTH-WEST ELEVATION  
Scale: 1/8" = 1'-0"