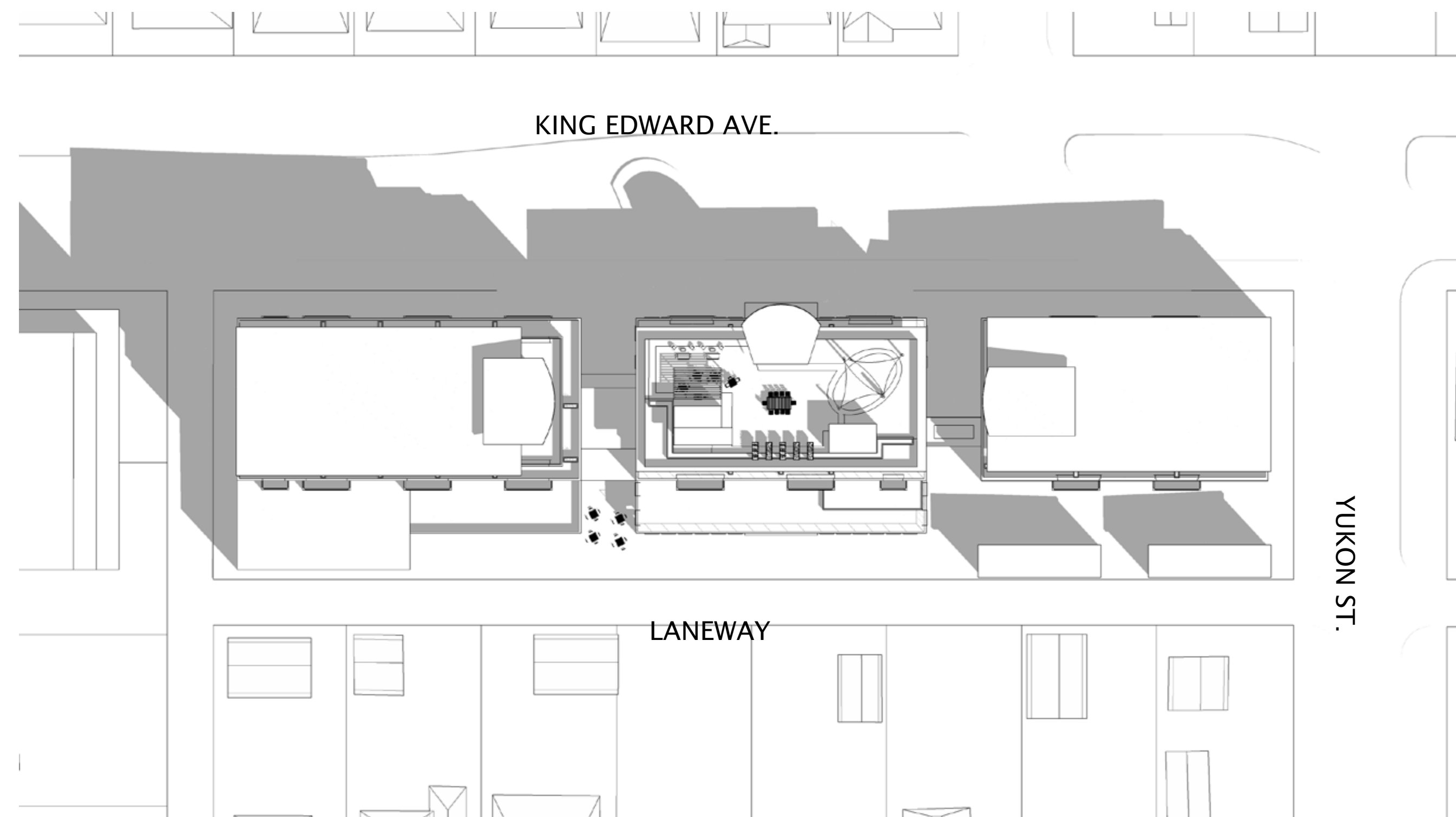
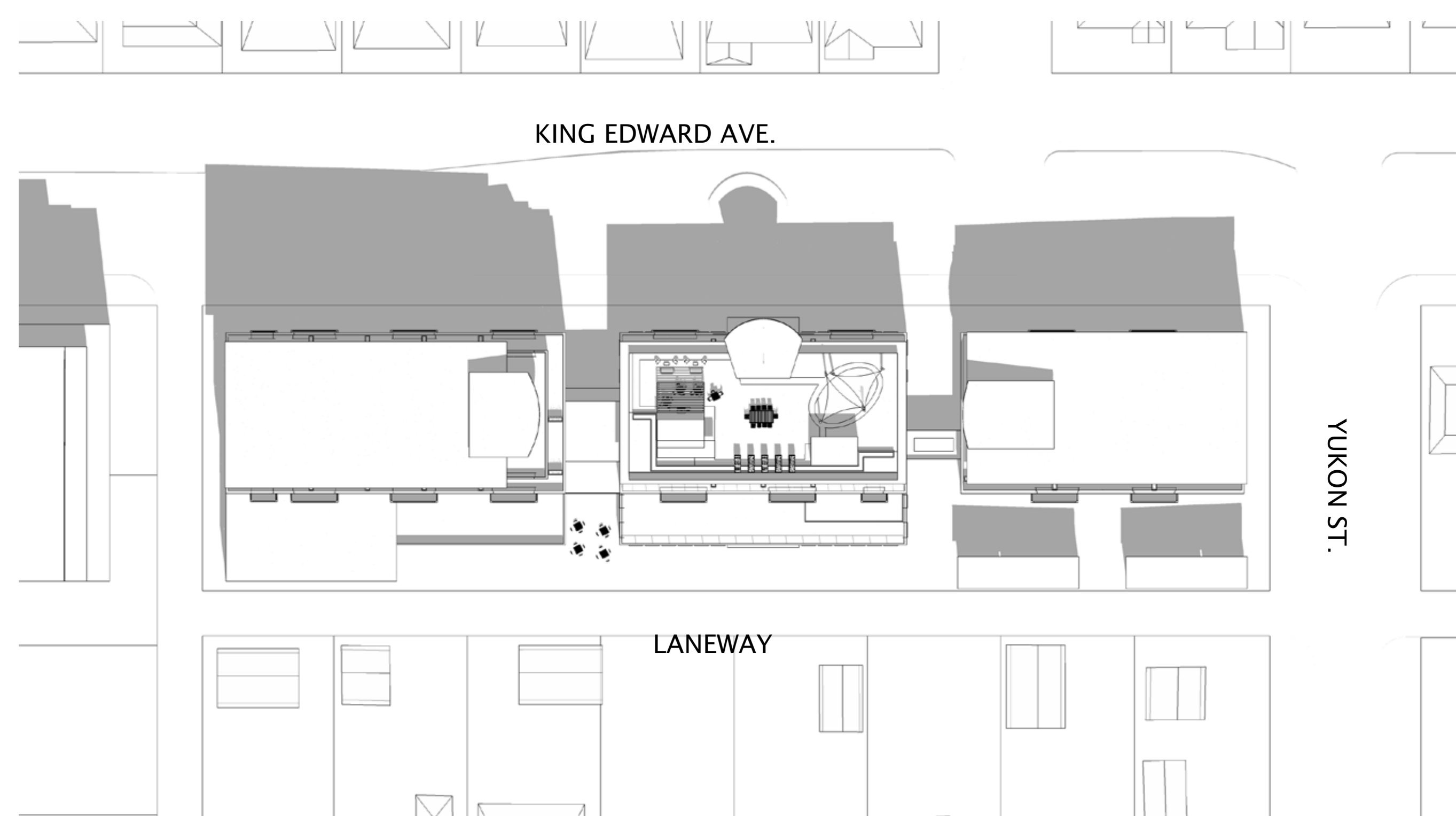


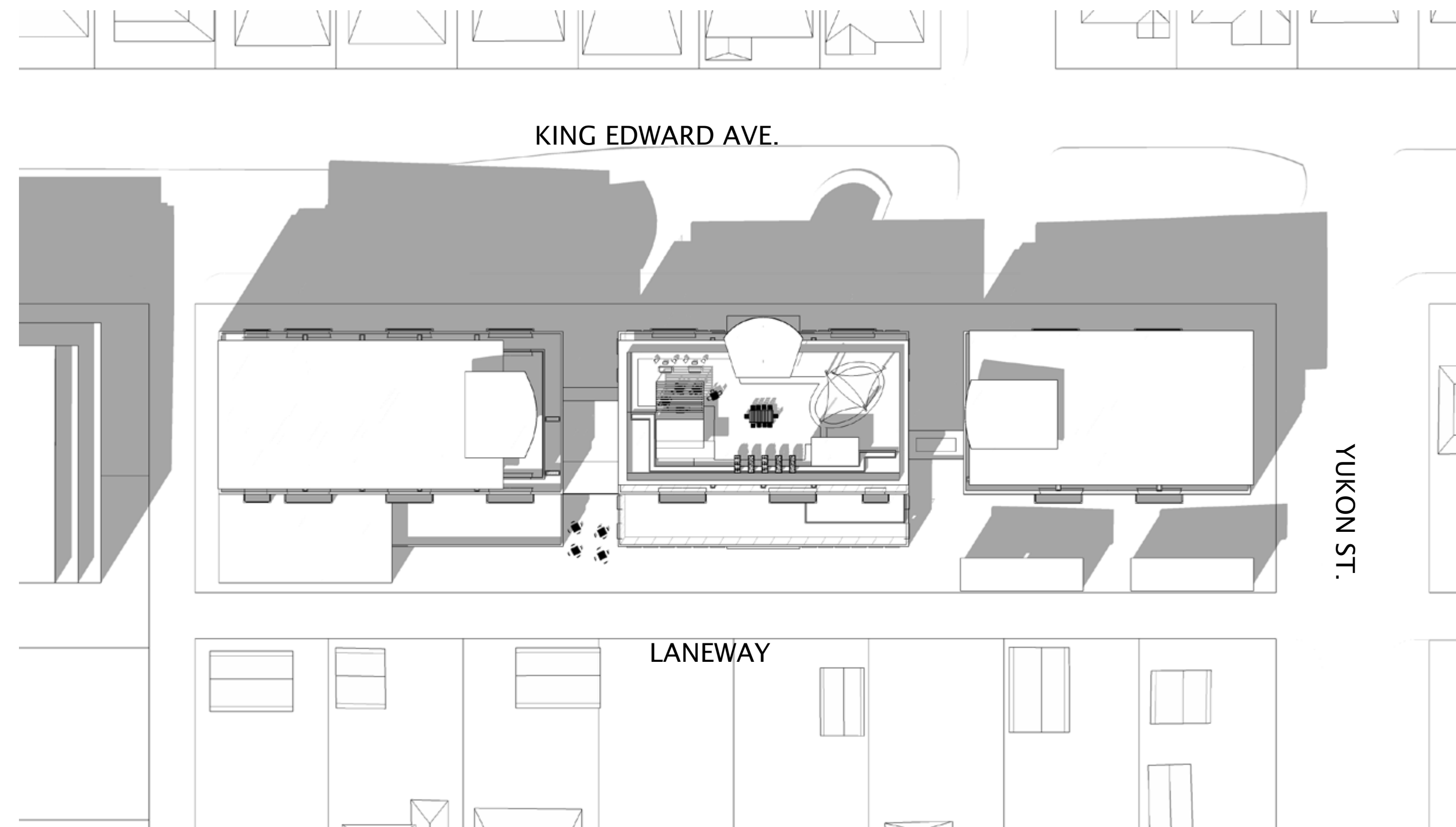
DATE	ISSUED FOR	REV
05/06/14	REZONING APPLICATION	01



SEPTEMBER/MARCH 21 10:00 AM

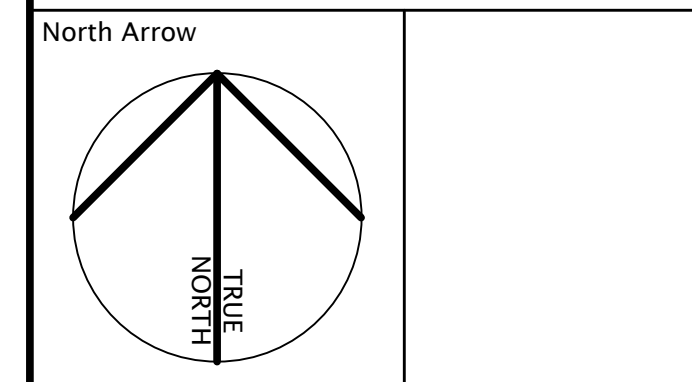


SEPTEMBER/MARCH 21 12:00 PM



SEPTEMBER/MARCH 21 2:00 PM

Notes:



NORR Architects Planners Inc.
 An Ingenium Group Company
 Suite 710 - 1201 West Pender Street
 Vancouver, BC, Canada V6E 2V2
 T 604 685 3237 F 604 685 3241
 www.norr.com
Victor Smith, Architect, A.A.A., B.Arch., MAIBC
 Ronald W. Poon, Architect, A.A.A., M.Arch., MAIBC
 Bruce C. McKenzie, Architect, A.A.A., M.Arch., MAIBC
 Glenn Burnell, Architect, M.Arch., MAIBC



Project
**CAMBIE SENIORS
 CONTINUUM-OF-CARE
 RESIDENCE**
 408-488 W KING EDWARD AVE
 VANCOUVER, BC

Drawing Title
SHADOW STUDIES

Scale
 Project No. OCVA-13-0018
 Drawing No. A00-00-09