

This drawing is an instrument of service and the property of Shift Architecture Inc. and shall remain their property. The use of this drawing shall be restricted to the original site for which it was prepared and publication thereof is expressly limited to such use. Reuse, reproduction or publication by any method in whole or in part is prohibited without their written consent.

No.	Date	Revision Notes
A	15/03/2016	ISSUED FOR REZONING



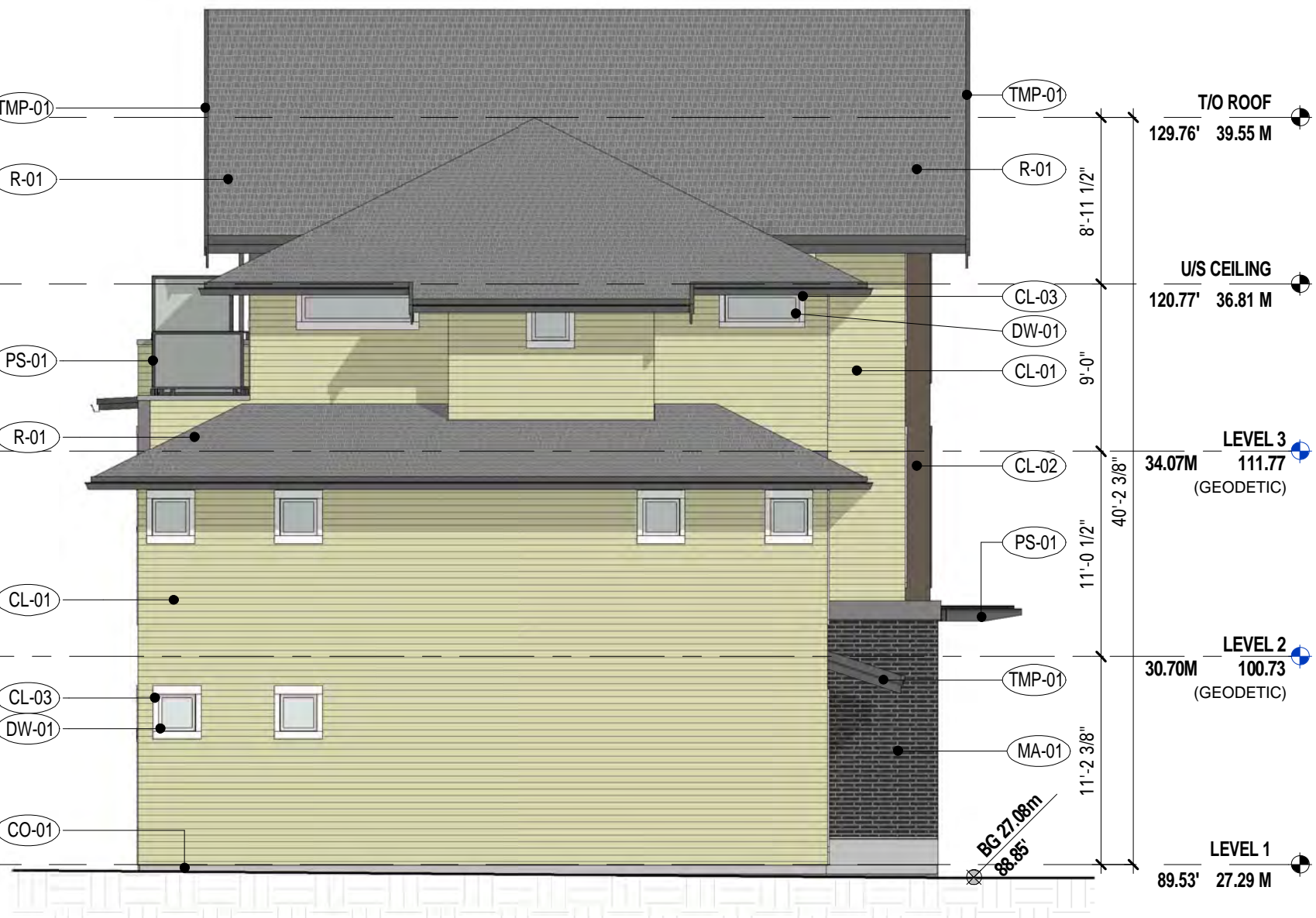
1 WEST ELEVATION - WEST BLDG.
1/8" = 1'-0"



2 SOUTH ELEVATION - WEST BLDG.
1/8" = 1'-0"



3 EAST ELEVATION WEST BLDG.
1/8" = 1'-0"



4 NORTH ELEVATION - WEST BLDG.
1/8" = 1'-0"

ELEVATION MATERIALS

Item	Material
CL-01	WOOD OR COMPOSITE HORIZ. LAP SIDING - PAINTED
CL-02	COMPOSITE PANEL SIDING - PAINTED
CL-03	WOOD DOOR/WINDOW TRIM - PAINTED
CO-01	CONCRETE - SEALED
DW-01	VINYL WINDOWS
DW-02	PREFINISHED ALUMINUM STOREFRONT
MA-01	BRICK - NORMAN MODULE, 1/3 BOND
MM-01	GLASS & STEEL DEMOUNTABLE CANOPY - PAINTED
PS-01	PREFINISHED ALUMINUM PRIVACY SCREEN
R-01	ASPHALT SHINGLES
RG-01	ALUMINUM GUARD - POWDER COATED - BLACK
TMP-01	WOOD FASCIA - PAINTED
TMP-02	PREFINISHED ALUMINUM FLASHINGS - MAKIN METALS MAKIN WICKER 26GA/30GA
TMP-3	PREFINISHED ALUMINUM GUTTER OR RWL - GENTEK "SLATE"

NOTE: 1. ROOF OVERHANG DIMENSION PROVIDED FROM FACE OF FINISHED WALL.

ISSUED FOR REZONING - 15 MARCH 2016

Project Title
ALAMEIN

4066 Macdonald St. - 2785 Alamein Ave.
Vancouver, B.C.



Client/Owner
Trillium Developments Ltd.

1525 W. 8th Ave.
Vancouver, B.C. V6J 1T5

Sheet Title
EXTERIOR ELEVATIONS - WEST BUILDING

Drawn By
Reviewed by CH

Project Number
1509

Plot Date 2016/03/15 Issue Date 15/03/2016

Scale 1/8" = 1'-0" Issue/Revision **A**

Sheet Number

A4.01

This drawing is an instrument of service and the property of Shift Architecture Inc. and shall remain their property. The use of this drawing shall be restricted to the original site for which it was prepared and publication thereof is expressly limited to such use. Reuse, reproduction or publication by any method in whole or in part is prohibited without their written consent.

No.	Date	Revision Notes
A	15/03/2016	ISSUED FOR REZONING
No.	Date	Revision Notes



1 SOUTH ELEVATION - EAST BUILDING
1/8" = 1'-0"



2 EAST ELEVATION - EAST BLDG
1/8" = 1'-0"



3 NORTH ELEVATION - EAST BLDG
1/8" = 1'-0"



4 WEST ELEVATION - EAST BUILDING
1/8" = 1'-0"

ELEVATION MATERIALS

Item	Material
CL-01	WOOD OR COMPOSITE HORIZ. LAP SIDING - PAINTED
CL-02	COMPOSITE PANEL SIDING - PAINTED
CL-03	WOOD DOOR/WINDOW TRIM - PAINTED
CO-01	CONCRETE - SEALED
DW-01	VINYL WINDOWS
DW-02	PREFINISHED ALUMINUM STOREFRONT
MA-01	BRICK - NORMAN MODULE, 1/3 BOND
MM-01	GLASS & STEEL DEMOUNTABLE CANOPY - PAINTED
PS-01	PREFINISHED ALUMINUM PRIVACY SCREEN
R-01	ASPHALT SHINGLES
RG-01	ALUMINUM GUARD - POWDER COATED - BLACK
TMP-01	WOOD FASCIA - PAINTED
TMP-02	PREFINISHED ALUMINUM FLASHINGS - MAKIN METALS MAKIN WICKER 26GA/30GA
TMP-3	PREFINISHED ALUMINUM GUTTER OR RWL - GENTEK "SLATE"

NOTE: 1. ROOF OVERHANG DIMENSION PROVIDED FROM FACE OF FINISHED WALL.

Project Title
ALAMEIN

4066 Macdonald St. - 2785 Alamein Ave.
Vancouver, B.C.



Client/Owner
Trillium Developments Ltd.

1525 W. 8th Ave.
Vancouver, B.C. V6J 1T5

Sheet Title
EXTERIOR ELEVATIONS - EAST BUILDING

Drawn By
Reviewed by CH

Project Number
1509

Plot Date 2016/03/15 Issue Date 15/03/2016

Scale 1/8" = 1'-0" Issue/Revision **A**

Sheet Number

A4.02

ISSUED FOR REZONING - 15 MARCH 2016