

Key

- L living room
- K kitchen
- D dining
- WC bathroom/suite
- WD washer-dryer
- S storage

General Notes

1. Architectural datum set at 46.96m = top of finished floor level at Level 1 (main floor)
2. Survey information is derived from the Nov 2012/April 2013 Matsen Pack & Toplis (MPT) survey.
3. All exterior grade levels, exterior riser information, ramp gradients and lengths are indicated on the Landscape Grading Plan

Residential Unit Count

Floor Level	Studio	1-bed	2-bed
L1	1	0	2
L2	9	1	1
L3	12	4	2
L4	12	4	2
L5	12	4	2
L6	12	4	2
L7	12	4	2
L8	8	4	4
L9	8	4	4
L10	8	4	4
L11	8	4	4
L12	8	4	4
L13	1	1	7
L14	1	1	7
SubTotal	112	43	47
Total			202

Keynotes Legend

- 1 aluminum framed window
- 2 aluminum balcony
- 3 masonry cladding
- 4 cementitious panel
- 5 metal architectural fence
- 6 overhead security gate
- 7 metal mesh security fence
- 8 balustrade
- 9 window wall glazing and spandrel panel
- 10 planting
- 11 aluminum framed storefront glazing

All drawings and related documents are the property of Acton Ostry Architects Inc. and may not be reproduced in whole or in part without the Architect's permission. This drawing should not be used to calculate areas. Do not scale this drawing. All dimensions to be checked on site by the contractor and such dimensions to be their responsibility. All work must comply with the relevant Building Code or Building Bylaw and related documents. Drawing errors and omissions must be immediately reported to the Architect.

Issues

Date	Description
25 Oct '12	Rezoning Letter of Inquiry
24 May '13	Issue for concurrent rezoning & development permit
21 Oct '13	Issue for concurrent rezoning & development permit resubmission
15 Jan '14	Issue for concurrent rezoning & development permit resubmission (Rental 100 policy changes)

revisions

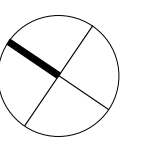
ACTON OSTRY ARCHITECTS INC

111 E 8 Avenue
 Vancouver BC
 Canada V5T 1R8
 t 604 739 3344
 f 604 739 3355
 info@actonostroy.ca

**Duke,
 333 E 11th Avenue**

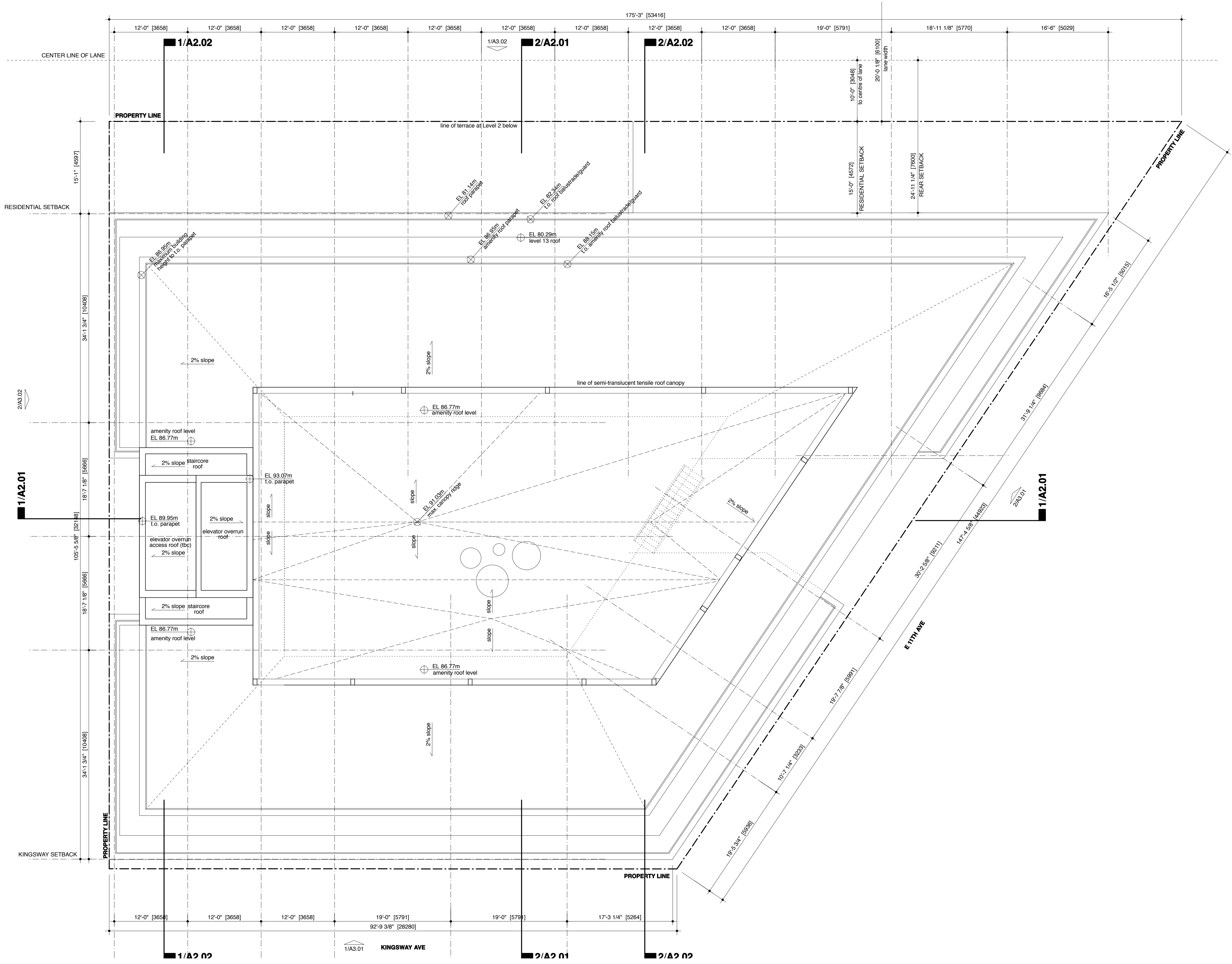
Edgar Development Corp
 333 E 11th Avenue, Vancouver, BC

scale	date
1/8" = 1'-0"	Jan 2014
project code	status
K275	RZ / DP
drawn	checked
KW	MO / RA



**Amenity Roof Level
 Plan**

drawing number
A1.27



Key

- L living room
- K kitchen
- D dining
- WC bathroom/suite
- WD washer-dryer
- S storage

General Notes

1. Architectural datum set at 46.96m = top of finished floor level at Level 1 (main floor)
2. Survey information is derived from the Nov 2012/April 2013 Mattson Peck & Toplis (MPT) survey.
3. All exterior grade levels, exterior riser information, ramp gradients and lengths are indicated on the Landscape Grading Plan

issues

21 Oct '13 Issue for concurrent rezoning & development permit resubmission

15 Jan '14 Issue for concurrent rezoning & development permit resubmission (Rental 100 policy changes)

revisions

Residential Unit Count

Floor Level	Studio	1-bed	2-bed
L1	1	0	2
L2	9	1	1
L3	12	4	2
L4	12	4	2
L5	12	4	2
L6	12	4	2
L7	12	4	2
L8	8	4	4
L9	8	4	4
L10	8	4	4
L11	8	4	4
L12	8	4	4
L13	1	1	7
L14	1	1	7
SubTotal	112	43	47
Total			202

- Keynotes Legend**
- 1 aluminum framed window
 - 2 aluminum balcony
 - 3 masonry cladding
 - 4 cementitious panel
 - 5 metal architectural fence
 - 6 overhead security gate
 - 7 metal mesh security fence
 - 8 balustrade
 - 9 window wall glazing and spandrel panel
 - 10 planting
 - 11 aluminum framed storefront glazing

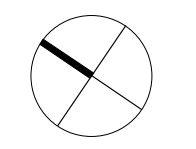
ACTON OSTRY ARCHITECTS INC

111 E 8 Avenue
 Vancouver BC
 Canada V5T 1R8
 t 604 739 3344
 f 604 739 3355
 info@actonstry.ca

**Duke,
 333 E 11th Avenue**

Edgar Development Corp
 333 E 11th Avenue, Vancouver, BC

scale	date
1/8" = 1'-0"	Jan 2014
project code	status
K275	RZ / DP
drawn	checked
KW	MO / RA



Roof Plan

drawing number
A1.28