

**Key**

- bike locker
- bike storage space
- AC Accessible parking space
- CS Car-share parking space

All drawings and related documents are the property of Acton Ostry Architects Inc. and may not be reproduced in whole or in part without the Architect's permission. This drawing should not be used to calculate areas. Do not scale this drawing. All dimensions to be checked on site by the contractor and such dimensions to be their responsibility. All work must comply with the relevant Building Code or Building Bylaw and related documents. Drawing errors and omissions must be immediately reported to the Architect.

**General Notes**

1. Architectural datum set at 46.96m = top of finished floor level at Level 1 (main floor)
2. Survey information is derived from the Nov 2012/April 2013 Matson Peck & Topless (MPT) survey.
3. All exterior grade levels, exterior riser information, ramp gradients and lengths are indicated on the Landscape Grading Plan

**Parking Count**

Flr Lvl	Residential		AC	CS	Commercial				
	Full	Small			Full	Small			
P1	0	0	0	8	40	5	6	1	2
P2	20	8	4	8	0	0	0	0	0
P3	22	8	4	8	0	0	0	0	0
<b>SubTotal</b>	<b>42</b>	<b>16</b>	<b>16</b>	<b>40</b>	<b>5</b>	<b>6</b>	<b>2</b>	<b>13</b>	
<b>Total</b>									

**Bicycle Parking Count**

Flr Lvl	Residential Full	A [lockers]		B [horiz]	
		A [vert]	B [horiz]	A [horiz]	B [horiz]
P1	0	0	0	0	0
P2	78	21	20	6	0
P3	78	27	20	0	0
<b>SubTotal</b>	<b>156</b>	<b>48</b>	<b>40</b>	<b>6</b>	<b>0</b>
<b>Total</b>				<b>244</b>	<b>6</b>

**Commercial A [lockers] B [horiz]**

P1	4	0
<b>Total</b>	<b>4</b>	

- Keynotes Legend**
- 1 aluminum framed window
  - 2 aluminum balcony
  - 3 masonry cladding
  - 4 cementitious panel
  - 5 metal architectural fence
  - 6 overhead security gate
  - 7 metal mesh security fence
  - 8 balustrade
  - 9
  - 10 planting
  - 11 aluminum framed storefront glazing

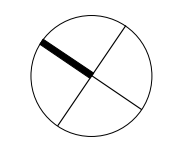
**ACTON OSTRY ARCHITECTS INC**

111 E 8 Avenue  
 Vancouver BC  
 Canada V5T 1R8  
 t 604 739 3344  
 f 604 739 3355  
 info@actonostry.ca

**The Duke,  
 333 E 11th Avenue**

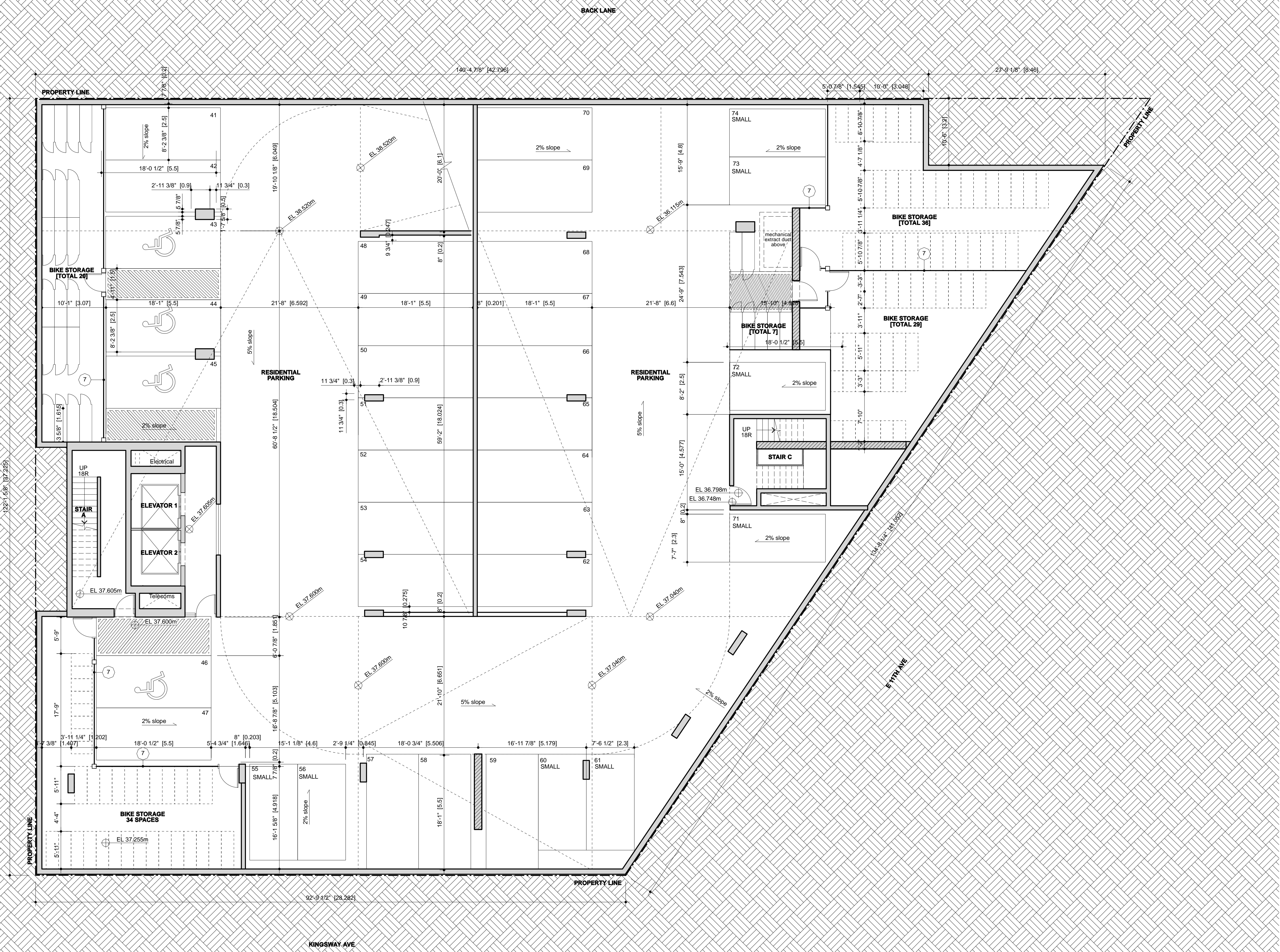
Edgar Development Corp  
 333 E 11th Avenue, Vancouver, BC

scale	date
1/8" = 1'-0"	Oct 2013
project code	status
K275	RZ / DP
drawn	checked
KW	MO / RA



**P3 Parking Level**

drawing number  
**A1.11**



**Key**

- bike locker
- bike storage space
- AC Accessible parking space
- CS Car-share parking space

All drawings and related documents are the property of Acton Ostry Architects Inc. and may not be reproduced in whole or in part without the Architect's permission. This drawing should not be used to calculate areas. Do not scale this drawing. All dimensions to be checked on site by the contractor and such dimensions to be their responsibility. All work must comply with the relevant Building Code or Building Bylaw and related documents. Drawing errors and omissions must be immediately reported to the Architect.

**General Notes**

1. Architectural datum set at 46.96m = top of finished floor level at Level 1 (main floor)
2. Survey information is derived from the Nov 2012/April 2013 Matson Peck & Topless (MPT) survey.
3. All exterior grade levels, exterior riser information, ramp gradients and lengths are indicated on the Landscape Grading Plan

**issues**

25 Oct '12	Rezoning Letter of Inquiry
24 May '13	Issue for concurrent rezoning & development permit
02 Oct '13	Revised massing following UDP comments
21 Oct '13	Issue for concurrent rezoning & development permit resubmission

**Parking Count**

Flr Lvl	Residential			Commercial		
	Full	Small	AC	Full	Small	AC
P1	0	0	0	8	40	1
P2	20	8	4	8	0	0
P3	22	8	4	8	0	0
<b>SubTotal</b>	<b>42</b>	<b>16</b>	<b>16</b>	<b>40</b>	<b>5</b>	<b>2</b>
<b>Total</b>				<b>114</b>		

**revisions**

29 Aug '13	Parking & bike layout updated for UDP. Address updated.
------------	---

**Bicycle Parking Count**

Flr Lvl	Residential		Commercial	
	A [horiz]	B [horiz]	A [horiz]	B [horiz]
P1	0	0	0	0
P2	78	21	20	6
P3	78	27	20	0
<b>SubTotal</b>	<b>156</b>	<b>48</b>	<b>40</b>	<b>6</b>
<b>Total</b>			<b>244</b>	<b>6</b>

**Commercial A [lockers] B [horiz]**

Flr Lvl	A [lockers]	B [horiz]
P1	4	0
Total	4	0

- Keynotes Legend**
- 1 aluminum framed window
  - 2 aluminum balcony
  - 3 masonry cladding
  - 4 cementitious panel
  - 5 metal architectural fence
  - 6 overhead security gate
  - 7 metal mesh security fence
  - 8 balustrade
  - 9
  - 10 planting
  - 11 aluminum framed storefront glazing

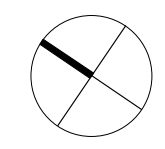
**ACTON OSTRY ARCHITECTS INC**

111 E 8 Avenue  
 Vancouver BC  
 Canada V5T 1R8  
 t 604 739 3344  
 f 604 739 3355  
 info@actonostroy.ca

**The Duke,  
 333 E 11th Avenue**

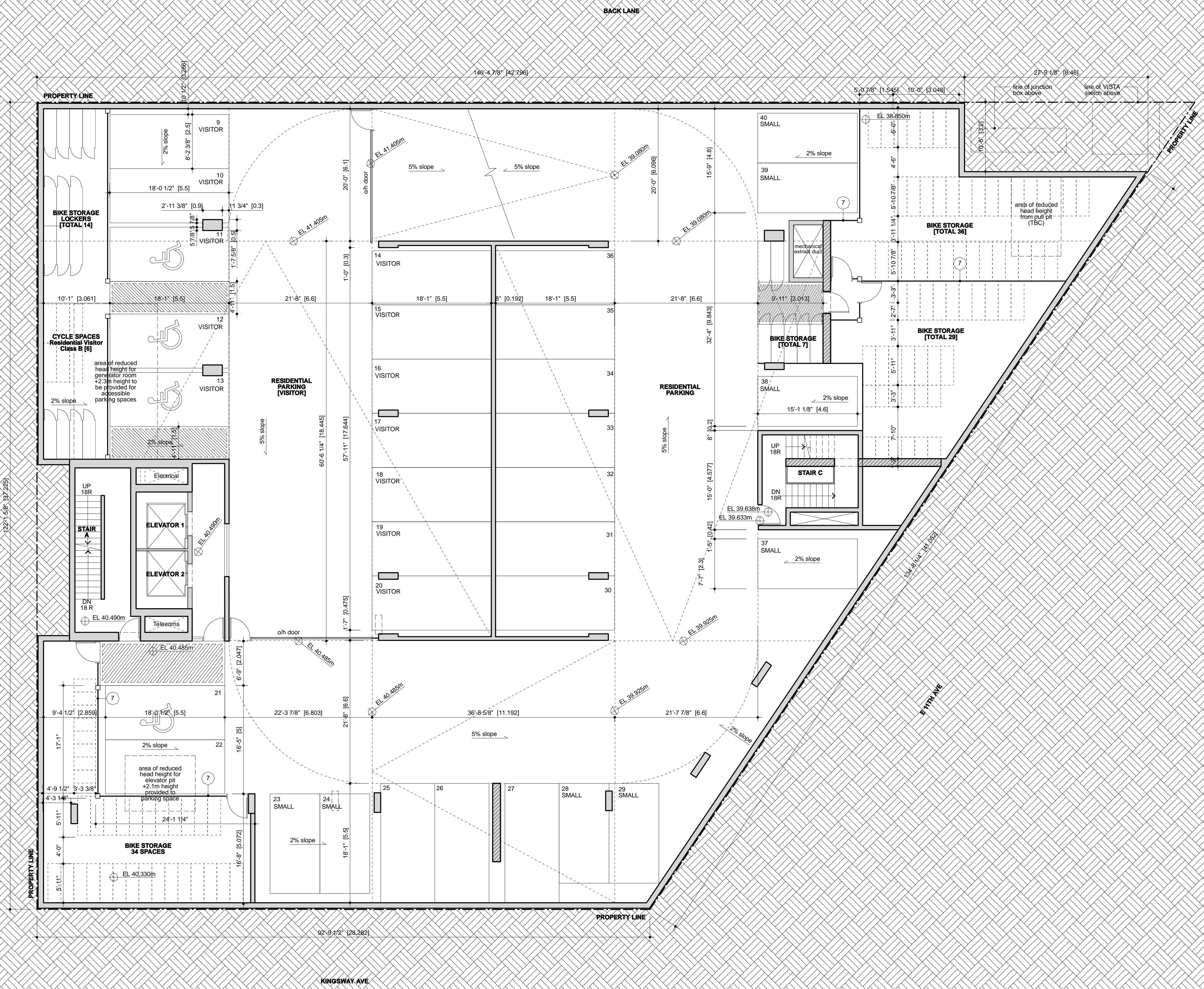
Edgar Development Corp  
 333 E 11th Avenue, Vancouver, BC

scale	date
1/8" = 1'-0"	Oct2013
project code	status
K275	RZ / DP
drawn	checked
KW	MO / RA



**P2 Parking Level**

drawing number  
**A1.12**



**Key**

- bike locker
- bike storage space
- AC Accessible parking space
- CS Car-share parking space

All drawings and related documents are the property of Acton Ostry Architects Inc. and may not be reproduced in whole or in part without the Architect's permission. This drawing should not be used to calculate areas. Do not scale this drawing. All dimensions to be checked on site by the contractor and such dimensions to be their responsibility. All work must comply with the relevant Building Code or Building Bylaw and related documents. Drawing errors and omissions must be immediately reported to the Architect.

**General Notes**

1. Architectural datum set at 46.96m = top of finished floor level at Level 1 (main floor)
2. Survey information is derived from the Nov 2012/April 2013 Matson Peck & Topliss (MPT) survey.
3. All exterior grade levels, exterior riser information, ramp gradients and lengths are indicated on the Landscape Grading Plan

**Parking Count**

Flr Lvl	Residential		AC	CS	Commercial				
	Full	Small			Full	Small			
P1	0	0	0	8	40	5	6	1	2
P2	20	8	4	8	0	0	0	0	0
P3	22	8	4	8	0	0	0	0	0
<b>SubTotal</b>	<b>42</b>	<b>16</b>	<b>16</b>	<b>40</b>	<b>5</b>	<b>6</b>	<b>2</b>		
<b>Total</b>								<b>114</b>	<b>13</b>

**Bicycle Parking Count**

Flr Lvl	Residential		Commercial	
	A [horiz]	B [horiz]	A [lockers]	B [horiz]
P1	0	0	0	0
P2	78	21	20	6
P3	78	27	20	0
<b>SubTotal</b>	<b>156</b>	<b>48</b>	<b>40</b>	<b>6</b>
<b>Total</b>			<b>244</b>	<b>6</b>

**Commercial A [lockers] B [horiz]**

Flr Lvl	A [lockers]	B [horiz]
P1	4	0
<b>Total</b>	<b>4</b>	<b>0</b>

- Keynotes Legend**
- 1 aluminum framed window
  - 2 aluminum balcony
  - 3 masonry cladding
  - 4 cementitious panel
  - 5 metal architectural fence
  - 6 overhead security gate
  - 7 metal mesh security fence
  - 8 balustrade
  - 9
  - 10 planting
  - 11 aluminum framed storefront glazing

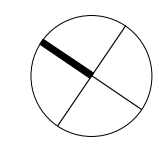
**ACTON OSTRY ARCHITECTS INC**

111 E 8 Avenue  
Vancouver BC  
Canada V5T 1R8  
t 604 739 3344  
f 604 739 3355  
info@actonostry.ca

**The Duke,  
333 E 11th Avenue**

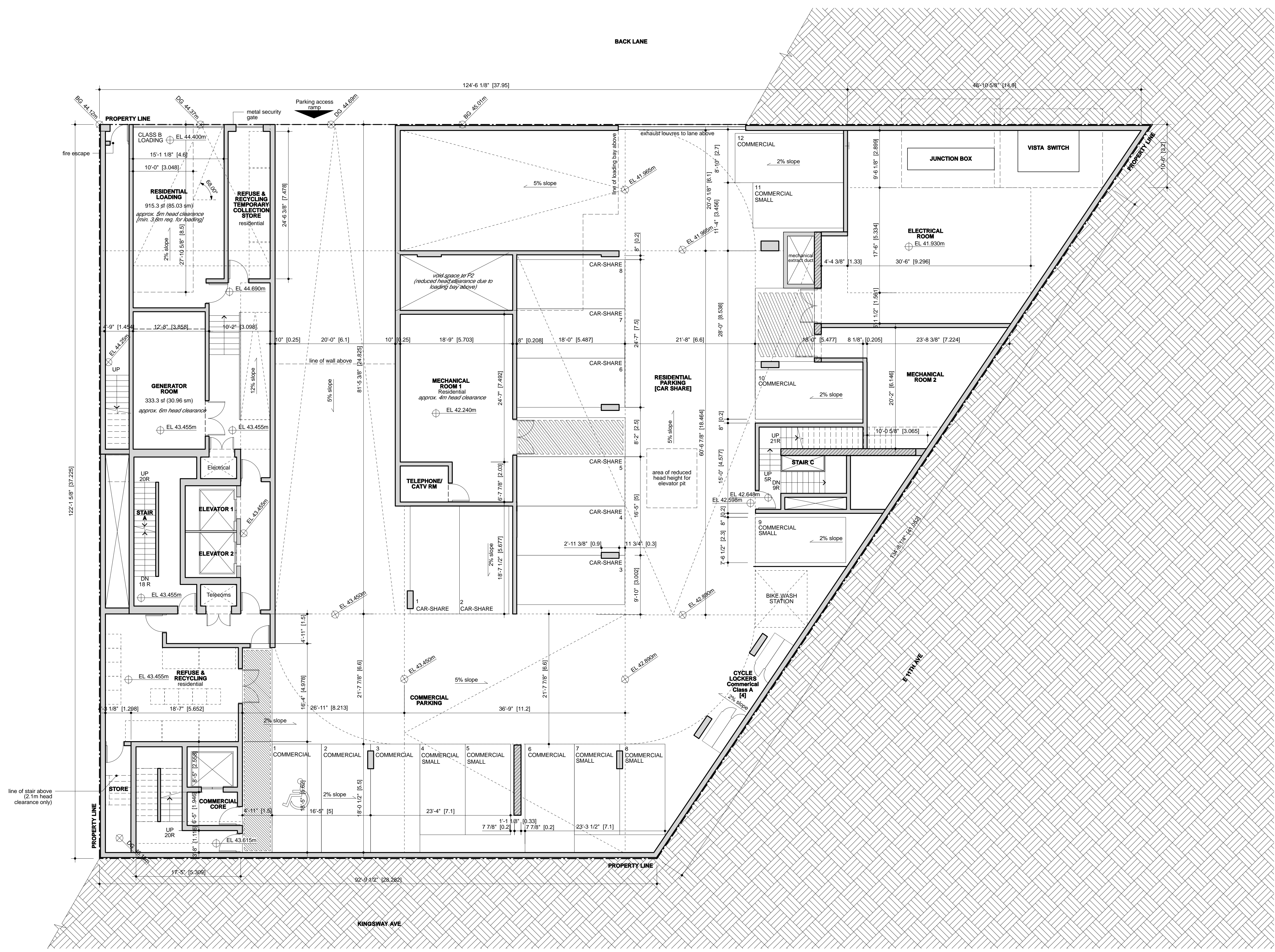
Edgar Development Corp  
333 E 11th Avenue, Vancouver, BC

scale	date
1/8" = 1'-0"	Oct 2013
project code	status
K275	RZ / DP
drawn	checked
KW	MO / RA



**P1 Parking Level**

drawing number  
**A1.13**



line of stair above (2.1m head clearance only)

fire escape

PROPERTY LINE