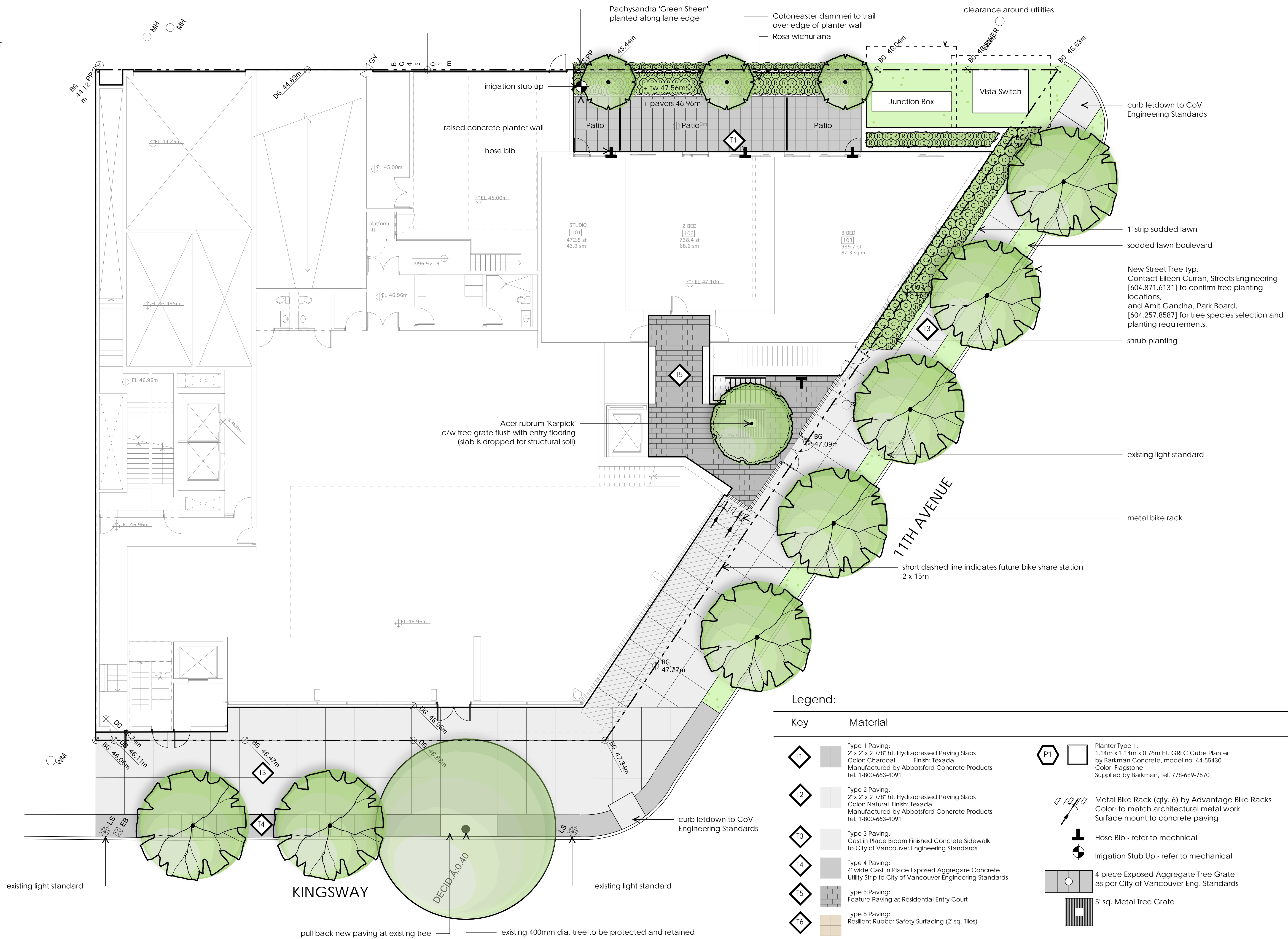


BACK LANE



Revisions:

2013.10.21	Issued for Rezoning/DP
1 2013.10.02	Re-issued for DP
2013.05.23	Issued for DP
no.:	date:
	item:

durantekreuk
Durante Kreuk Ltd.
102 - 1637 West 5th Avenue
Vancouver BC V6J 1N5
t: 604 684 4611
f: 604 684 0577
www.dk.bc.ca

Project:
The Duke
333 E 11th Avenue
Vancouver BC

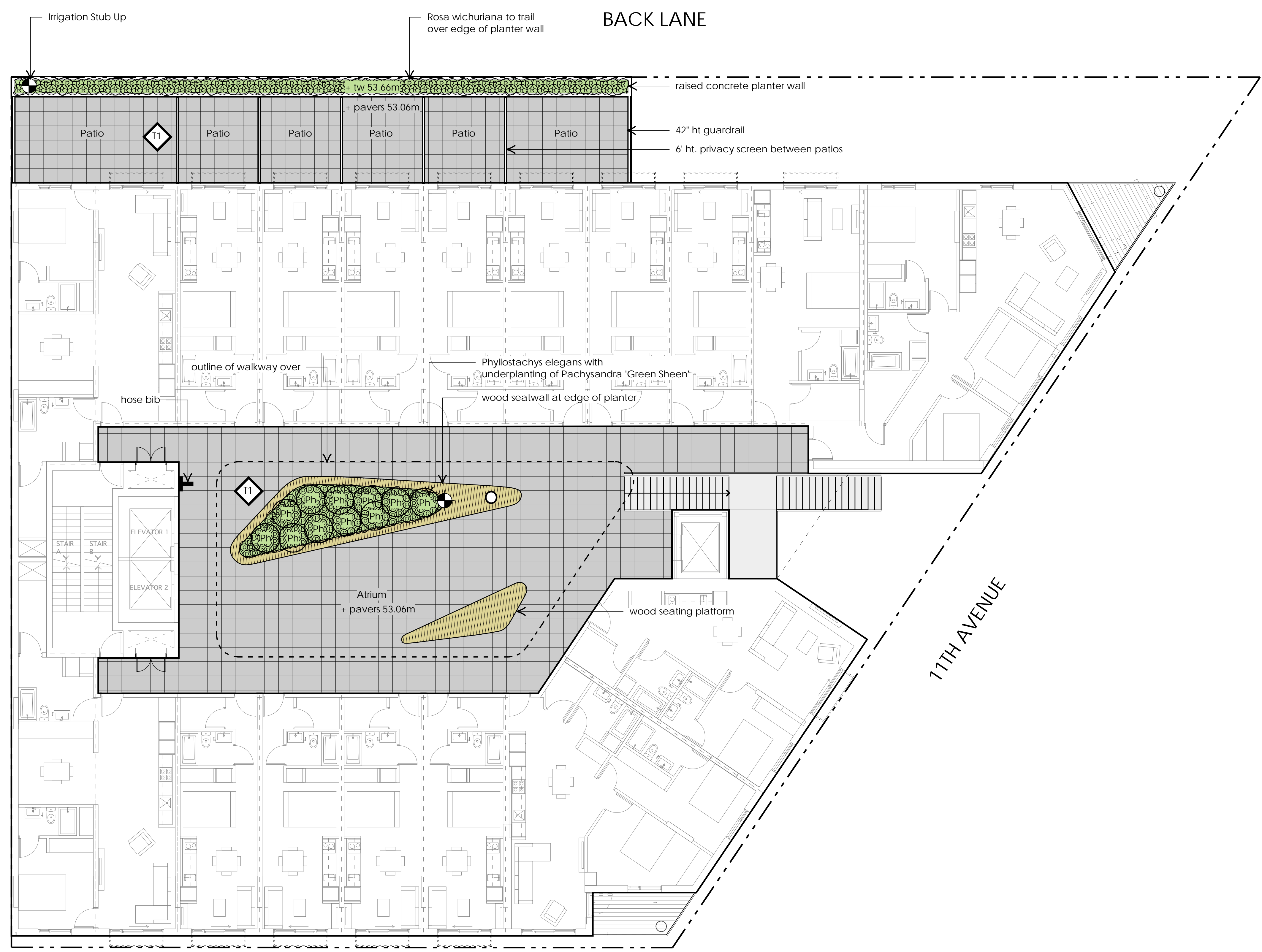
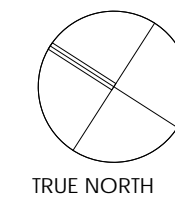
Drawn by: JES
Checked by: JES
Date: May 17, 2013
Scale: 1/8" = 1'-0"

Drawing Title:
Level 1 Landscape Plan

Project No.:
13021
Sheet No.:

Legend:

Key	Material
T1	Type 1 Paving: 2' x 2' x 2 7/8" ht. Hydrpressed Paving Slabs Color: Charcoal Finish: Texada Manufactured by Abbotsford Concrete Products tel. 1-800-663-4091
T2	Type 2 Paving: 2' x 2' x 2 7/8" ht. Hydrpressed Paving Slabs Color: Natural Finish: Texada Manufactured by Abbotsford Concrete Products tel. 1-800-663-4091
T3	Type 3 Paving: Cast in Place Broom Finished Concrete Sidewalk to City of Vancouver Engineering Standards
T4	Type 4 Paving: 4' wide Cast in Place Exposed Aggregate Concrete Utility Strip to City of Vancouver Engineering Standards
T5	Type 5 Paving: Feature Paving at Residential Entry Court
T6	Type 6 Paving: Resilient Rubber Safety Surfacing (2' sq. Tiles)
P1	Planter Type 1: 1.14m x 1.14m x 0.76m ht. GRFC Cube Planter by Barkman Concrete, model no. 44-55430 Color: Flagstone Supplied by Barkman, tel. 778-689-7670
[Symbol]	Metal Bike Rack (qty. 6) by Advantage Bike Racks Color: to match architectural metal work Surface mount to concrete paving
[Symbol]	Hose Bib - refer to mechanical
[Symbol]	Irrigation Stub Up - refer to mechanical
[Symbol]	4 piece Exposed Aggregate Tree Grate as per City of Vancouver Eng. Standards
[Symbol]	5' sq. Metal Tree Grate



-	2013.10.21	Issued for Rezoning/DP
1	2013.10.02	Re-Issued for DP
-	2013.05.23	Issued for DP
no.:	date:	item:

Revisions:

dk Durante Kreuk Ltd.
 102 - 1637 West 5th Avenue
 Vancouver BC V6J 1N5
 t: 604 684 4611
 f: 604 684 0577
 www.dk.bc.ca

Project:

The Duke
 333 E 11th Avenue
 Vancouver BC

Drawn by: JES
 Checked by: JES
 Date: May 17, 2013
 Scale: 1/8" = 1'-0"

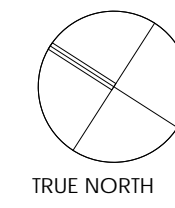
Drawing Title:

Level 2 Landscape Plan

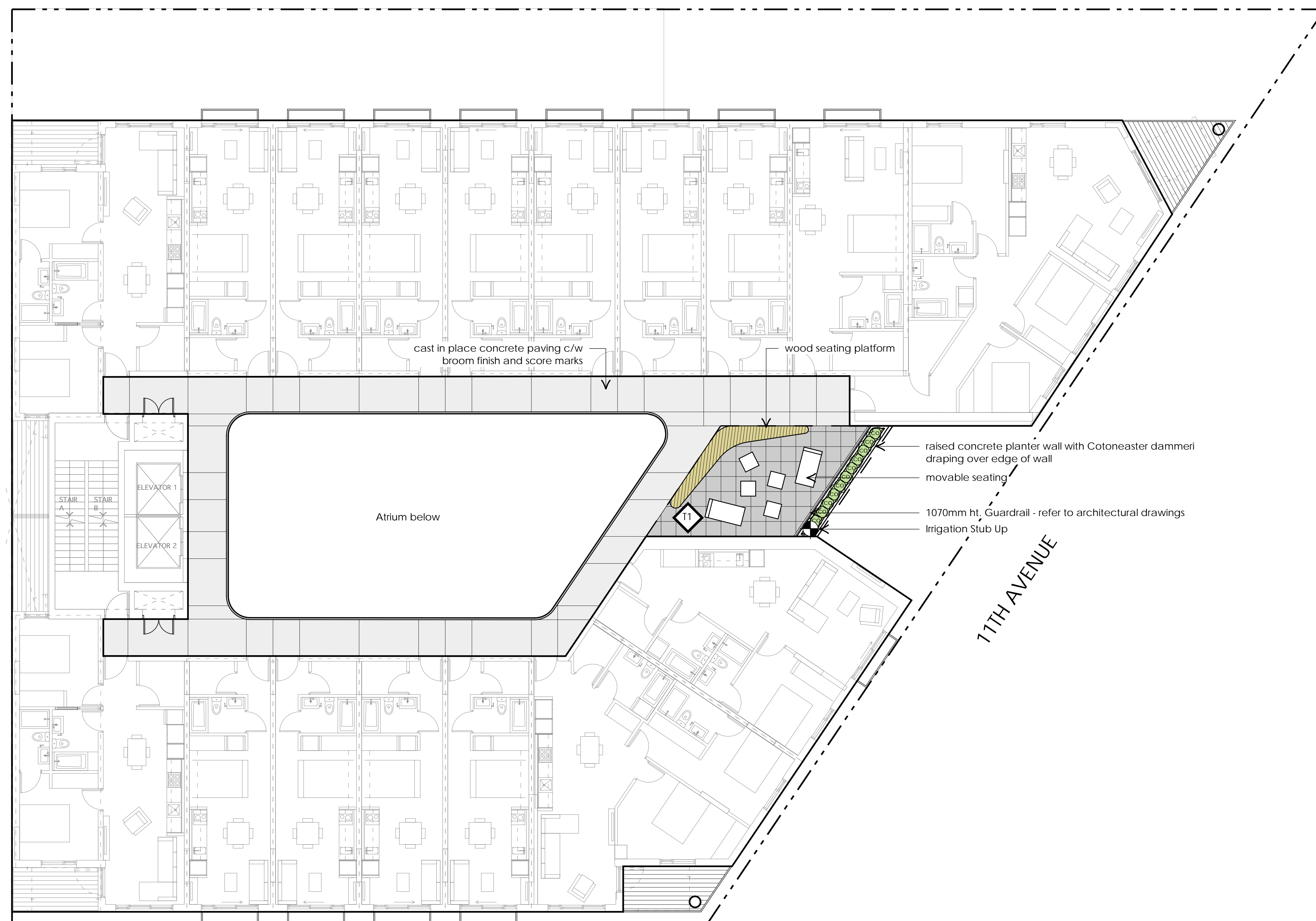
Project No.:
13021

Sheet No.:

L 1.2



BACK LANE



KINGSWAY

-	2013.10.21	Issued for Rezoning/DP
1	2013.10.02	Re-Issued for DP
-	2013.05.23	Issued for DP
no.:	date:	item:

Revisions:



Durante Kreuk Ltd.
102 - 1637 West 5th Avenue
Vancouver BC V6J 1N5
t: 604 684 4611
f: 604 684 0577
www.dkl.bc.ca

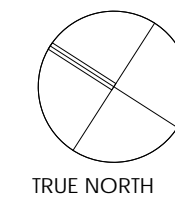
Project:
The Duke
333 E 11th Avenue
Vancouver BC

Drawn by: JES
Checked by: JES
Date: May 17, 2013
Scale: 1/8" = 1'-0"

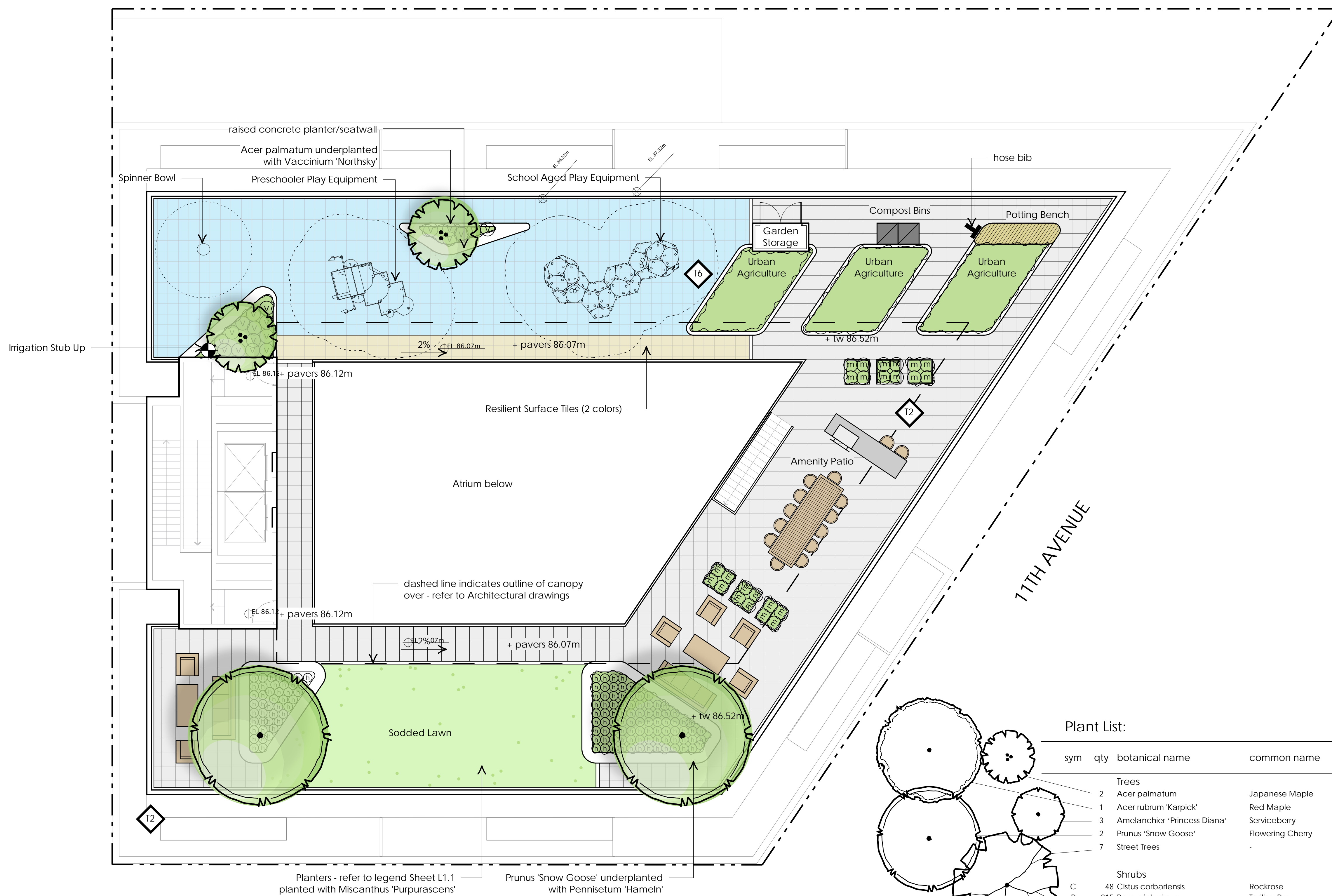
Drawing Title:
Levels 6, 9, + 12
Landscape Plan

Project No.:
13021
Sheet No.:

L 1.3



BACK LANE



Revisions:

2	2013.10.21	Issued for Rezoning/DP
1	2013.10.02	Re-issued for DP
-	2013.05.23	Issued for DP
no.:	date:	item:



Project:
The Duke
 333 E 11th Avenue
 Vancouver BC

Plant List:

sym	qty	botanical name	common name	size	comments
Trees					
	2	<i>Acer palmatum</i>	Japanese Maple	B&B, 3m ht.	Multi-stem
	1	<i>Acer rubrum</i> 'Karpick'	Red Maple	9cm cal. B&B	1.8m ht. standard
	3	<i>Amelanchier</i> 'Princess Diana'	Serviceberry	6cm cal. B&B	1.2m ht. standard
	2	<i>Prunus</i> 'Snow Goose'	Flowering Cherry	7cm cal. B&B	1.8m ht. standard
	7	Street Trees	-	7cm cal. B&B	1.8m ht. standard
Shrubs					
C	48	<i>Cistus corbariensis</i>	Rockrose		#3 pot
R	215	<i>Rosa wichuriana</i>	Trailing Rose		#3 pot
Ph	11	<i>Phyllostachys elegans</i>	Bamboo		#10 pot
V	20	<i>Vaccinium</i> 'Northsky'	Blueberry		#3 pot
Grasses + Groundcovers					
co	71	<i>Cotoneaster dammeri</i>	Cotoneaster		#1 pot
p	224	<i>Pachysandra</i> 'Green Sheen'	Japanese Spurge		#1 pot
h	169	<i>Pennisetum</i> 'Hameln'	Dwarf Fountain Grass		#1 pot
m	24	<i>Miscanthus</i> 'Purpurascens'	Orange Flame Grass		#3 pot

general planting notes:

- All work shall meet or exceed the requirements as outlined in the current Edition of the B.C. Landscape Standard.
- Plant sizes and related container classes are specified according to the current B.C. Landscape Standard Edition. For container classes #3 and smaller, plant sizes shall be as shown in the plant list and the Standard; for all other plants, both plant size and container class shall be as shown in the plant list. Specifically, when the plant list call for #5 class containers these shall be as defined in the BCNTA (ANSI) Standard.
- All 'Soft Landscape Areas' are to be irrigated to IABC Standards.
- All irrigation valve boxes equipped with quick-couplers.

Drawn by: JES
 Checked by: JES
 Date: Oct. 21, 2013
 Scale: 1/8" = 1'-0"
 Drawing Title:

Roof Landscape Plan

Project No.:
13021

Sheet No.:

L 1.4

KINGSWAY