

Key	
[Light Blue Box]	commercial
[Light Yellow Box]	residential - studio / 1bed
[Light Orange Box]	residential - 2 bed
[Light Purple Box]	circulation
[Light Green Box]	social space
[Light Grey Box]	parkade

**General Notes**

1. Architectural datum set at 46.96m = top of finished floor level at Level 1 (main floor)
2. Survey information is derived from the November 2012 / April 2013 Matson Peck & Topless (MPT) survey.

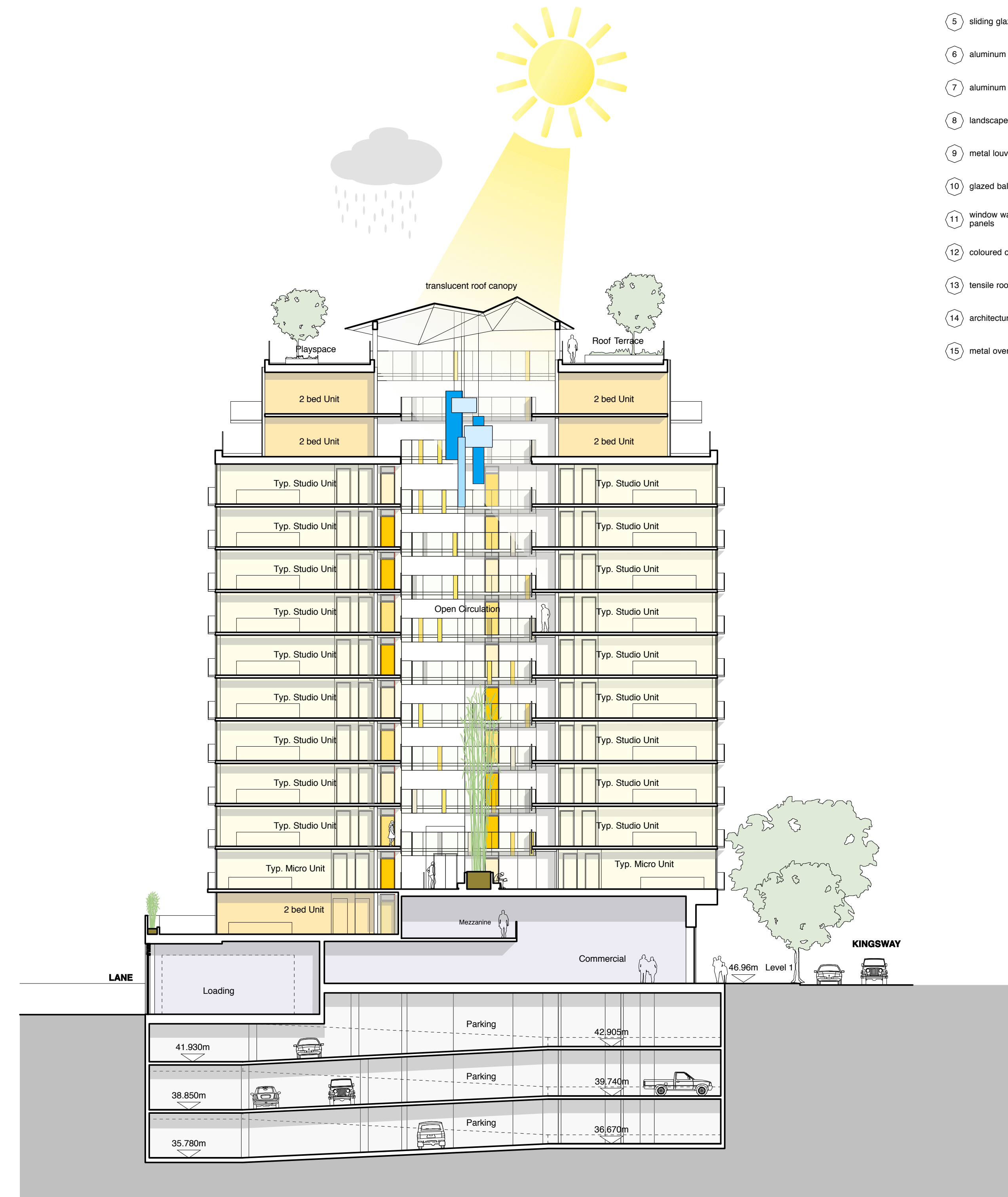
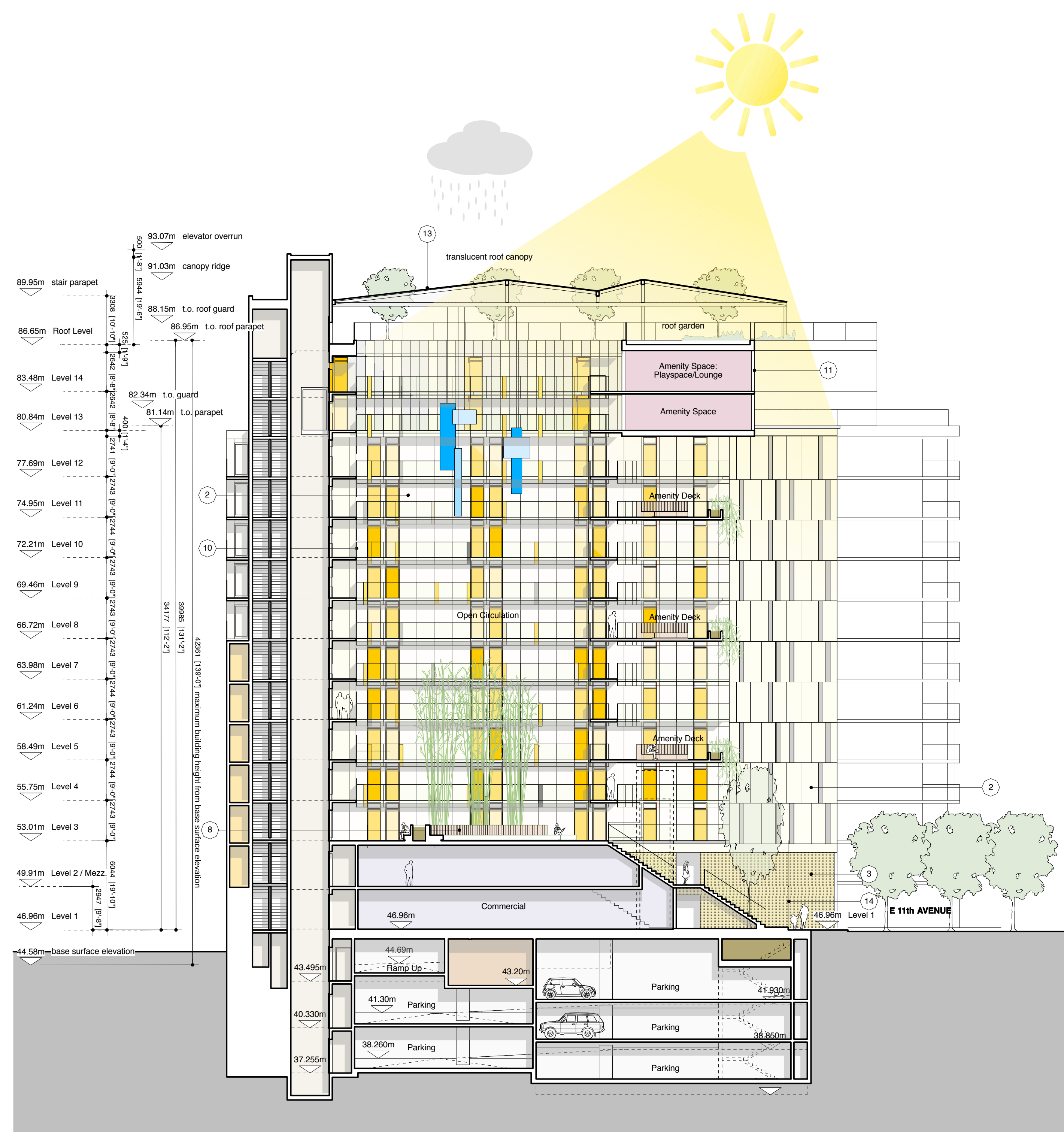
- Keynotes Legend**
- 1 aluminum panel
  - 2 cementitious panel cladding
  - 3 masonry cladding
  - 4 glazing in clear anodized aluminum frame
  - 5 sliding glazed door to balcony
  - 6 aluminum Juliette balcony
  - 7 aluminum balustrade to balcony
  - 8 landscape planter
  - 9 metal louvre
  - 10 glazed balustrade / guard
  - 11 window wall glazing with solid spandrel panels
  - 12 coloured cementitious panel
  - 13 tensile roof
  - 14 architectural metal entry gate
  - 15 metal overhead security gate

**issues**

25 Oct '12	Rezoning Letter of Inquiry
24 May '13	Concurrent Rezoning & Development Permit
02 Oct '13	Massing updated following UDP comments
21 Oct '13	Issue for concurrent rezoning & development permit resubmission

**revisions**

29 Aug '13	Address & Colours updated to reflect materiality for UDP comments
09 Oct '13	South West Elevation updated



**ACTON OSTRY**  
ARCHITECTS INC

111 E 8 Avenue  
 Vancouver BC  
 Canada V5T 1R8  
 t 604 739 3344  
 f 604 739 3355  
 info@actonostry.ca

**The Duke,**  
 333 E 11th Avenue

Edgar Development Corp  
 333 E 11th Avenue, Vancouver, BC

scale	date
1/16" = 1'-0"	Oct2013
project code	status
K275	RZ / DP
drawn	checked
BS	MO / RA

**Sections**  
 drawing number  
**A2.01**