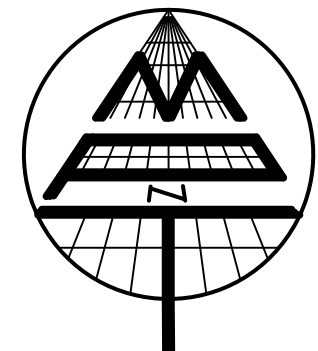


**SURVEY PLAN OF LOTS 12, 13 AND 14 ALL OF BLOCK 117
DISTRICT LOT 301 GROUP 1 NEW WESTMINSTER DISTRICT PLAN 187**

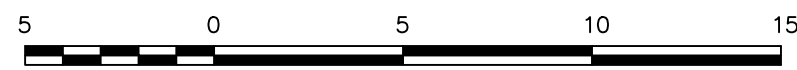
PARCEL IDENTIFIER (PID): LOT 12: 015-607-623
LOT 13: 015-607-640
LOT 14: 015-607-666

CIVIC ADDRESS
#275 KINGSWAY
VANCOUVER, B.C.

EAST 10TH AVENUE



LEGEND
SCALE 1:200

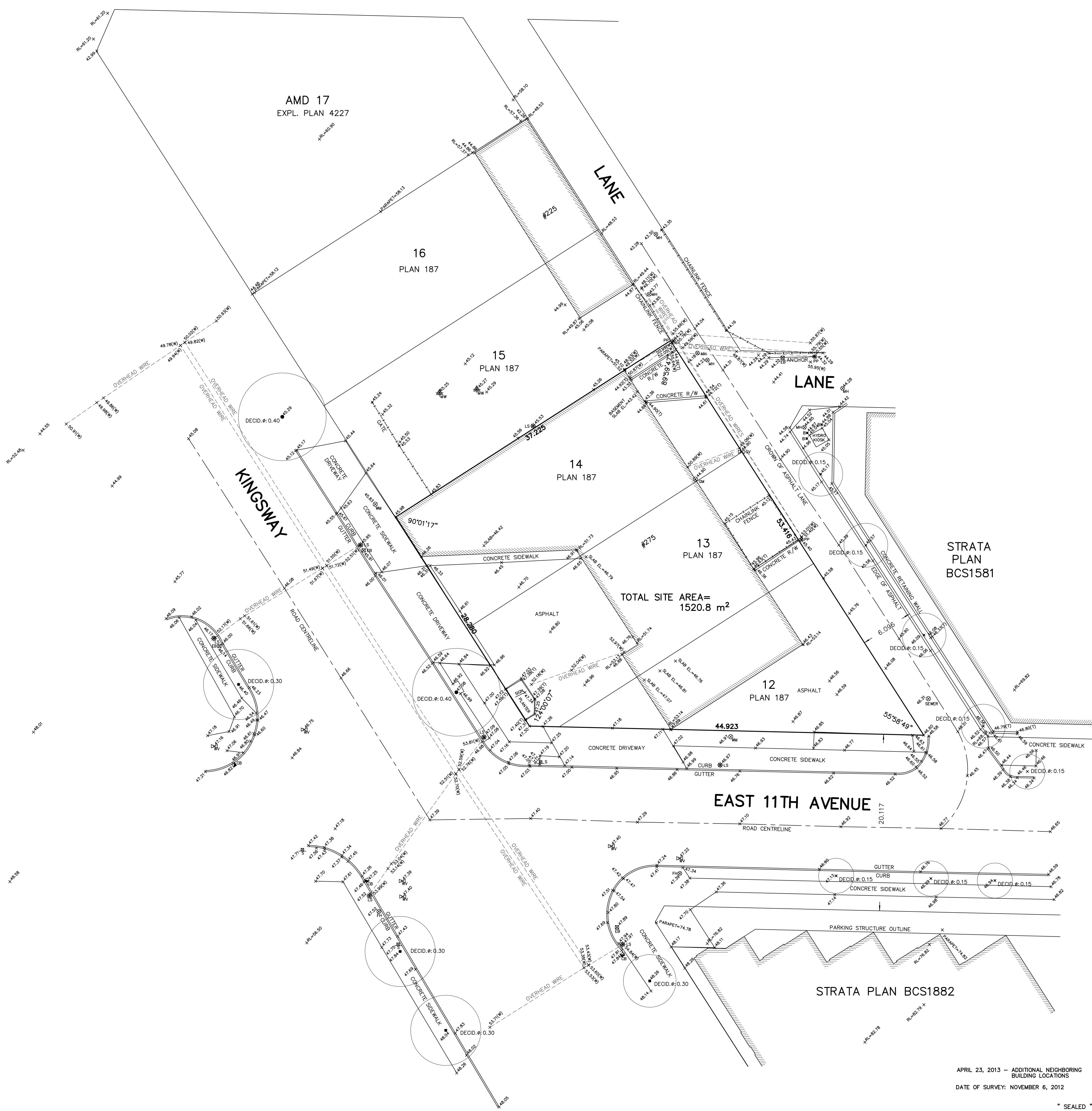


ALL DISTANCES ARE IN METRES.

- INDICATES SPOT ELEVATION
- B INDICATES BOLLARD
- CB INDICATES CATCH BASIN
- EB INDICATES ELECTRICAL BOX
- FH INDICATES FIRE HYDRANT
- LS INDICATES LAMP STANDARD
- MH INDICATES MANHOLE
- MW INDICATES MONITORING WELL
- PP INDICATES POWER POLE
- S INDICATES SIGN
- GM INDICATES GAS METER
- GV INDICATES GAS VALVE
- WV INDICATES WATER VALVE
- (T) INDICATES TOP OF WALL
- (W) INDICATES OVERHEAD WIRE
- RL INDICATES ROOF LEVEL

NOTES:

- PROPERTY LINE DIMENSIONS ARE DERIVED FROM LAND TITLE OFFICE RECORDS AND LEGAL FIELD SURVEYS.
- ELEVATIONS ARE IN METRES AND ARE DERIVED FROM INTEGRATED SURVEY MONUMENT V-2093, LOCATED AT THE NORTHWEST CORNER OF KINGSWAY AND EAST 10TH AVENUE WITH AN ELEVATION OF 40.720 METRES, CVD28GVRD DATUM.
- BUILDING OUTLINES ON STRATA PLAN BCS1581 AND STRATA PLAN BC1882 ARE DERIVED FROM LAND TITLE OFFICE PLAN RECORDS.



STRATA PLAN BCS1581

STRATA PLAN BCS1882

APRIL 23, 2013 - ADDITIONAL NEIGHBORING BUILDING LOCATIONS
DATE OF SURVEY: NOVEMBER 6, 2012

© COPYRIGHT
MATSON PECK & TOPLISS
SURVEYORS & ENGINEERS
#320 - 11120 HORSESHOE WAY
RICHMOND, B.C., V7A 5H7
PH: 604-270-9331
FAX: 604-270-4137
CADFILE: 17150-001-TPG-001.DWG

CLIENT REF: EDGAR DEVELOPMENT CORP.

WILLIAM P. WONG
B.C. LAND SURVEYOR (#697)
THIS DOCUMENT IS NOT VALID
UNLESS ORIGINALLY SIGNED
AND SEALED.