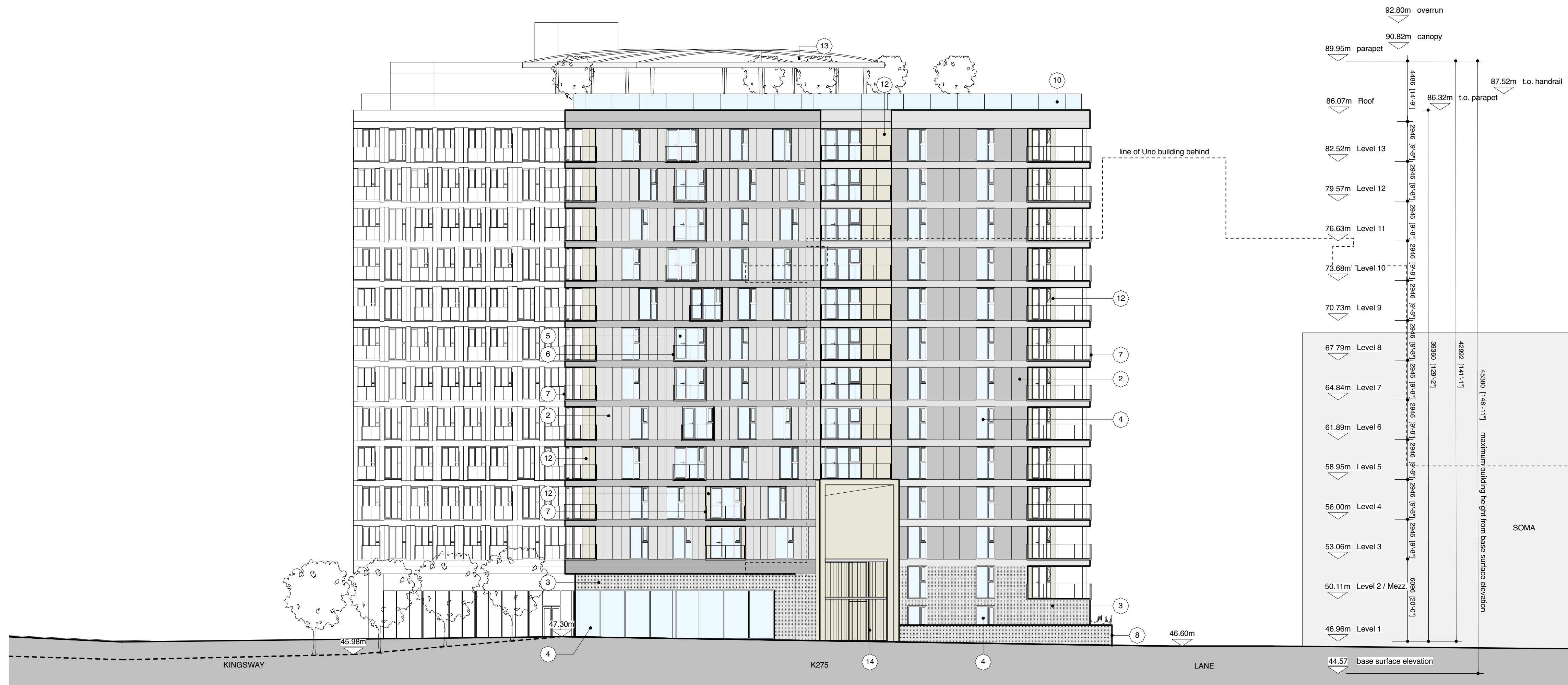


1 Kingsway Elevation [West Elevation]



2 11th Avenue [South Elevation]

General Notes

1. Architectural datum set at 46.96m = top of finished floor level at Level 1 (main floor)
2. Survey information is derived from the November 2012 / April 2013 Matson Peck & Topless (MPT) survey.

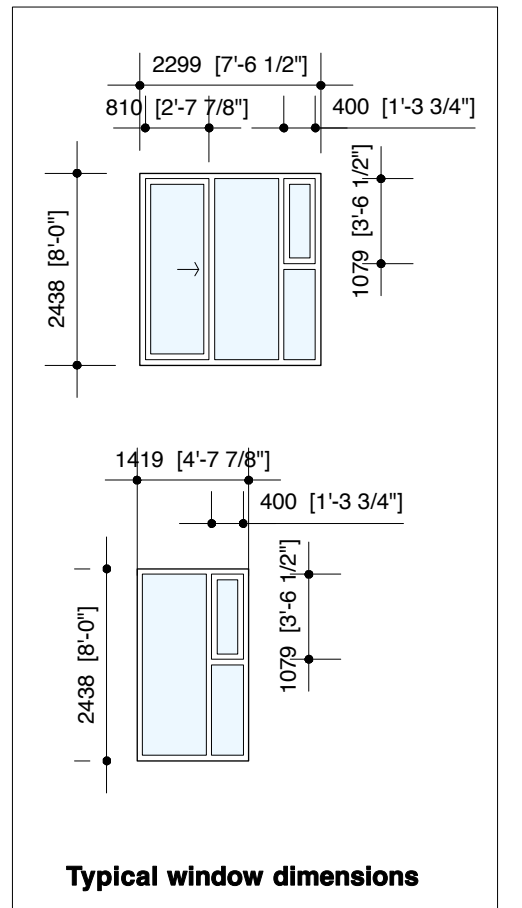
issues

23 Nov '12	Rezoning Letter of Inquiry
24 May '13	Concurrent Rezoning & Development Permit

revisions

Keynotes Legend

- 1 aluminum panel
- 2 cementitious panel cladding
- 3 masonry cladding
- 4 glazing in clear anodized aluminum frame
- 5 sliding glazed door to balcony
- 6 aluminum Juliette balcony
- 7 aluminum balustrade to balcony
- 8 landscape planter
- 9 metal louvre
- 10 glazed balustrade
- 11 -
- 12 coloured cementitious panel
- 13 tensile roof
- 14 architectural metal entry gate
- 15 metal overhead security gate



ACTON OSTRY ARCHITECTS INC

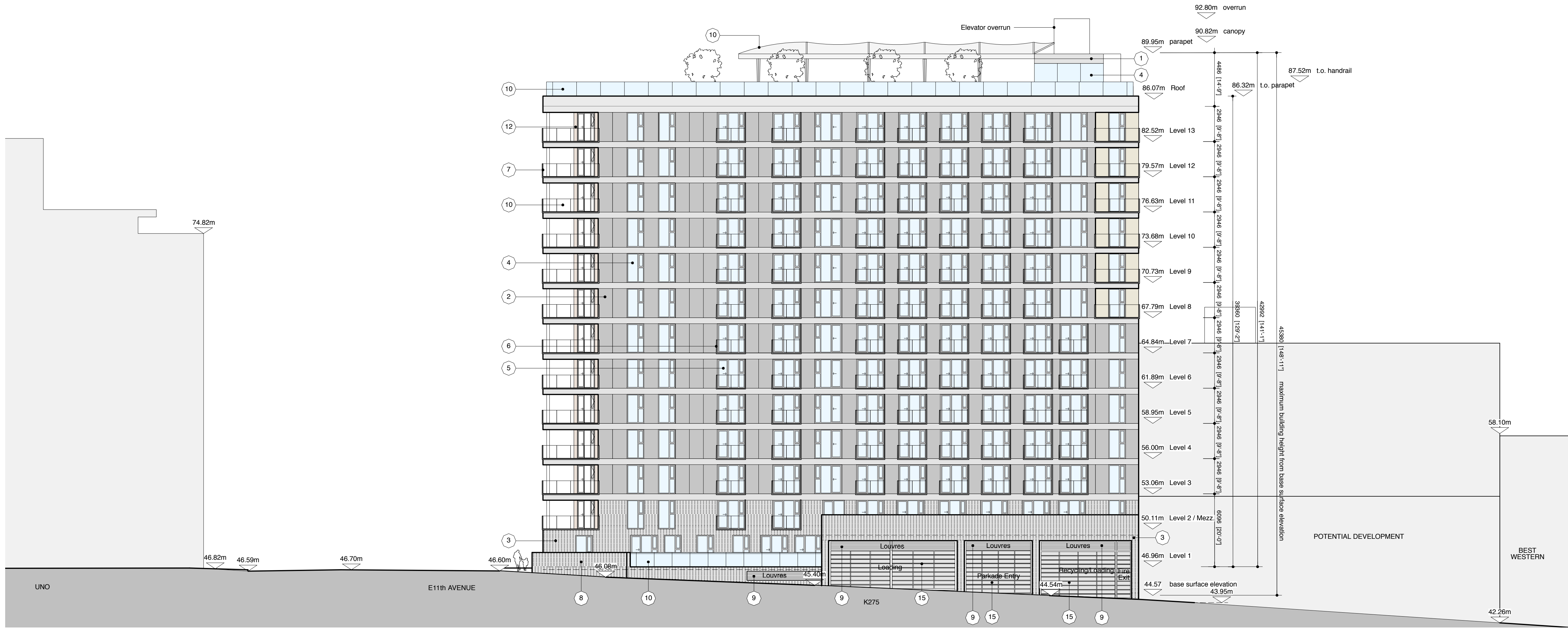
111 E 8 Avenue
Vancouver BC
Canada V5T 1R8
t 604 739 3344
f 604 739 3355
info@actonostroy.ca

275 Kingsway

scale	date
1/16"=1'-0"	May 2012
project code	status
K275	RZ / DP
drawn	checked
KW	MO / RA

Elevations

drawing number
A3.01



1 Lane Elevation [East Elevation]

General Notes

1. Architectural datum set at 46.96m = top of finished floor level at Level 1 (main floor)
2. Survey information is derived from the November 2012 / April 2013 Matson Peck & Topless (MPT) survey.

Keynotes Legend

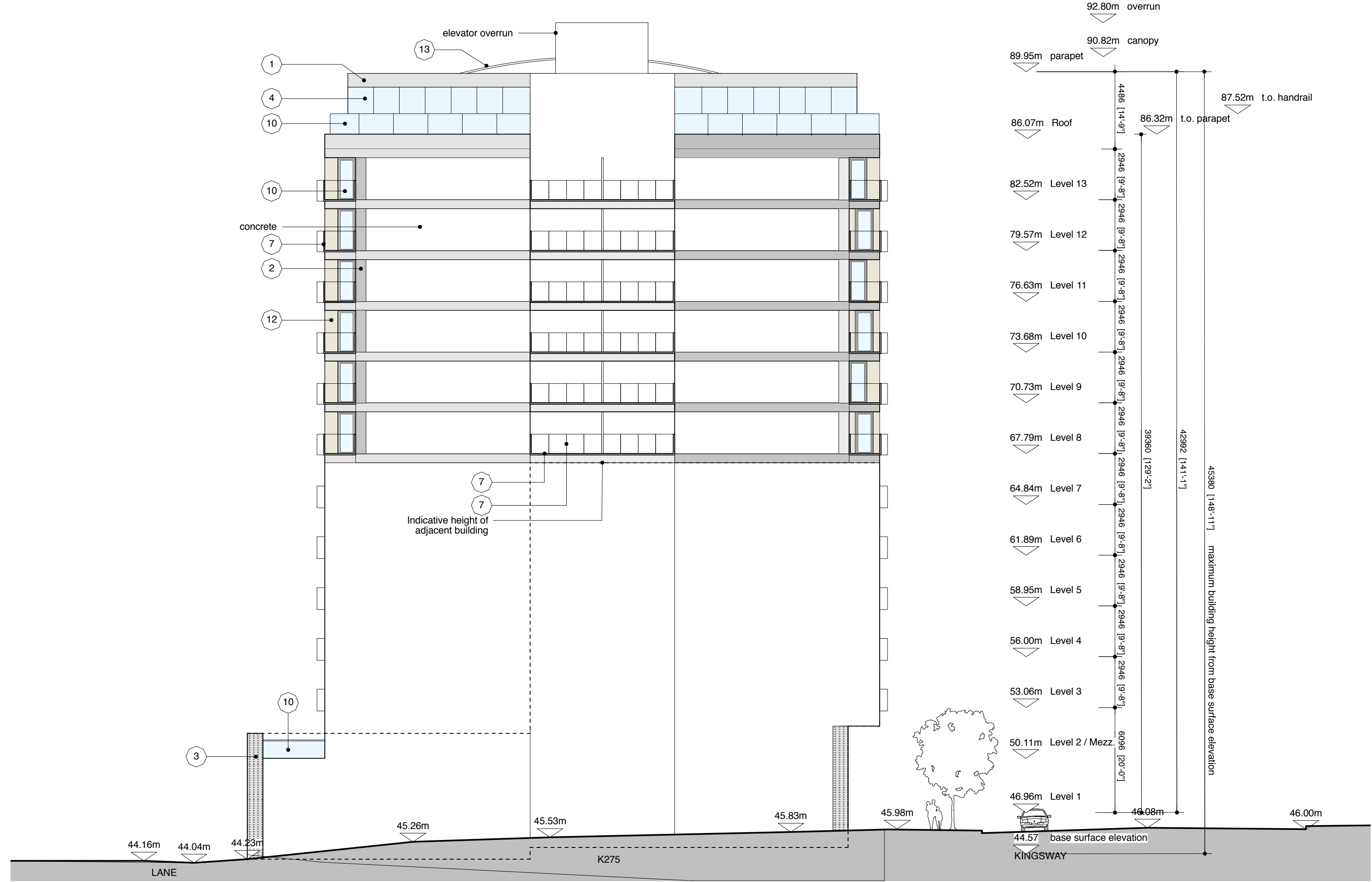
- 1 aluminum panel
- 2 cementitious panel cladding
- 3 masonry cladding
- 4 glazing in clear anodized aluminum frame
- 5 sliding glazed door to balcony
- 6 aluminum Juliette balcony
- 7 aluminum balustrade to balcony
- 8 landscape planter
- 9 metal louvre
- 10 glazed balustrade
- 11 -
- 12 coloured cementitious panel
- 13 tensile roof
- 14 architectural metal entry gate
- 15 metal overhead security gate

All drawings and related documents are the property of Acton Ostry Architects Inc. and may not be reproduced in whole or in part without the Architect's permission. This drawing should not be used to calculate areas. Do not scale this drawing. All dimensions to be checked on site by the contractor and such dimensions to be their responsibility. All work must comply with the relevant Building Code or Building Bylaw and related documents. Drawing errors and omissions must be immediately reported to the Architect.

issues

23 Nov '12	Rezoning Letter of Inquiry
24 May '13	Concurrent Rezoning & Development Permit

revisions



2 North Elevation

ACTON OSTRY ARCHITECTS INC

111 E 8 Avenue
 Vancouver BC
 Canada V5T 1R8
 t 604 739 3344
 f 604 739 3355
 info@actonostroy.ca

275 Kingsway

scale	date
1"16" : 1'-0"	May 2012
project code	status
K275	RZ / DP
drawn	checked
KW	MO / RA

Elevations

drawing number
A3.02