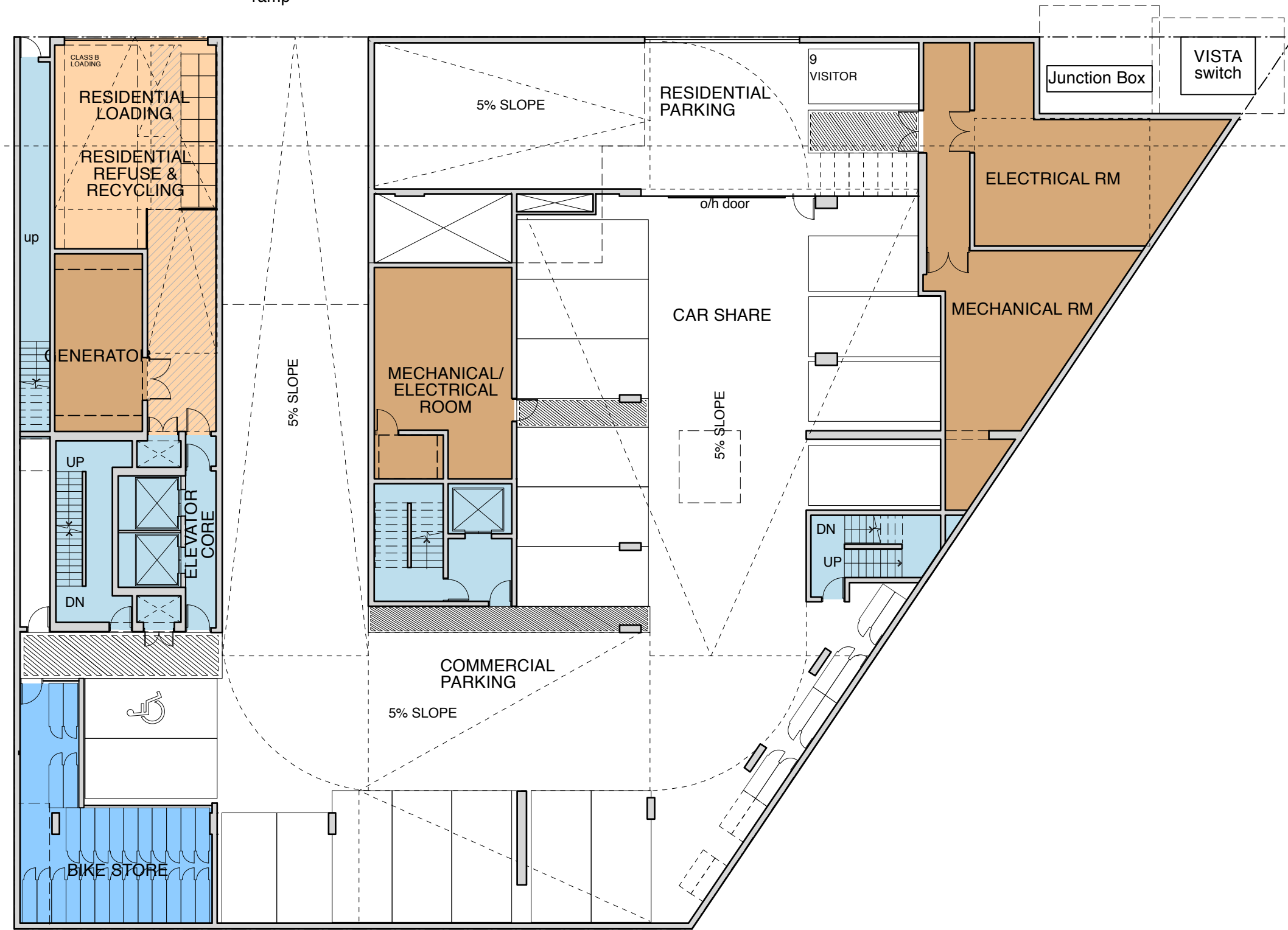
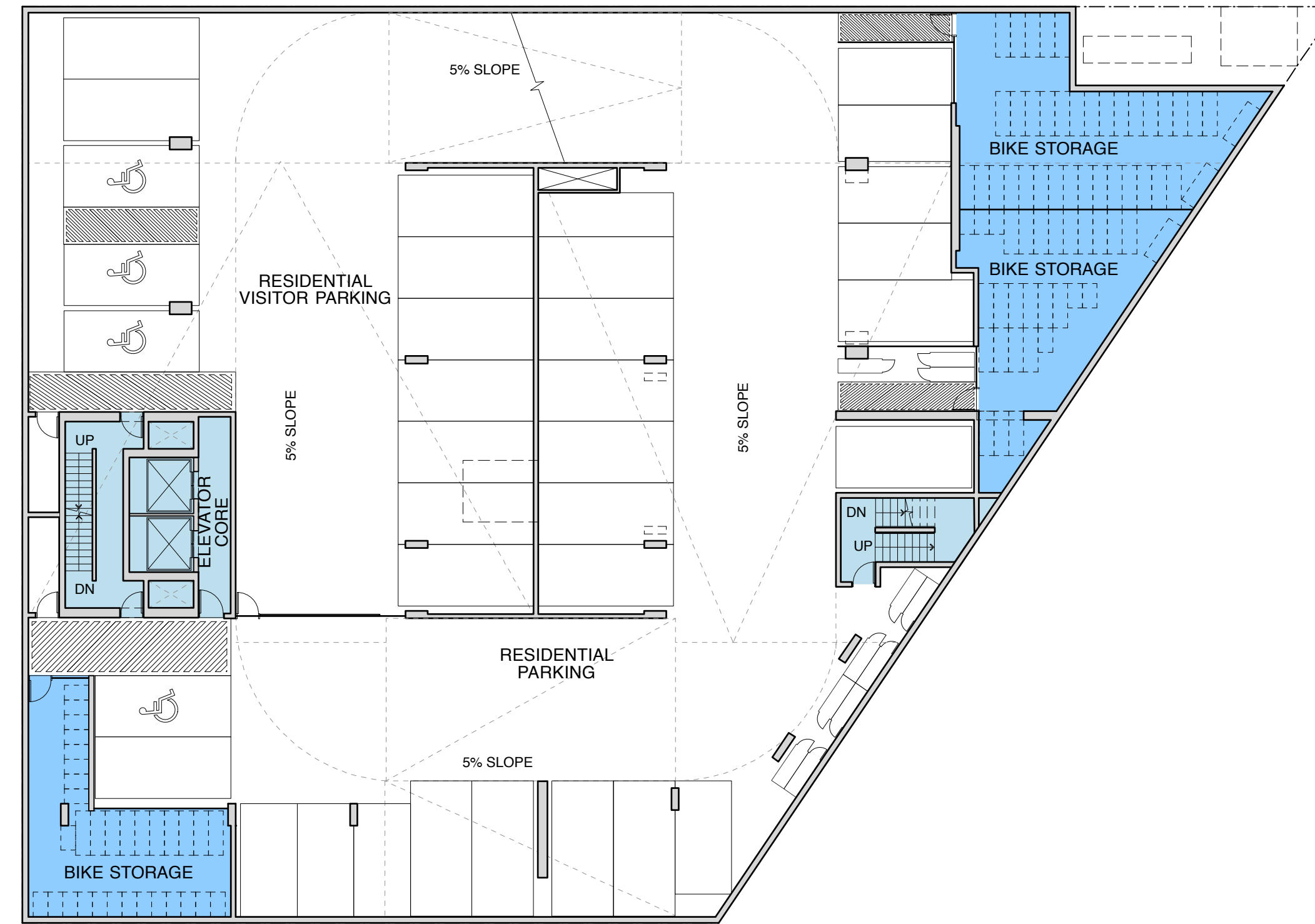


CENTER LINE OF LANE

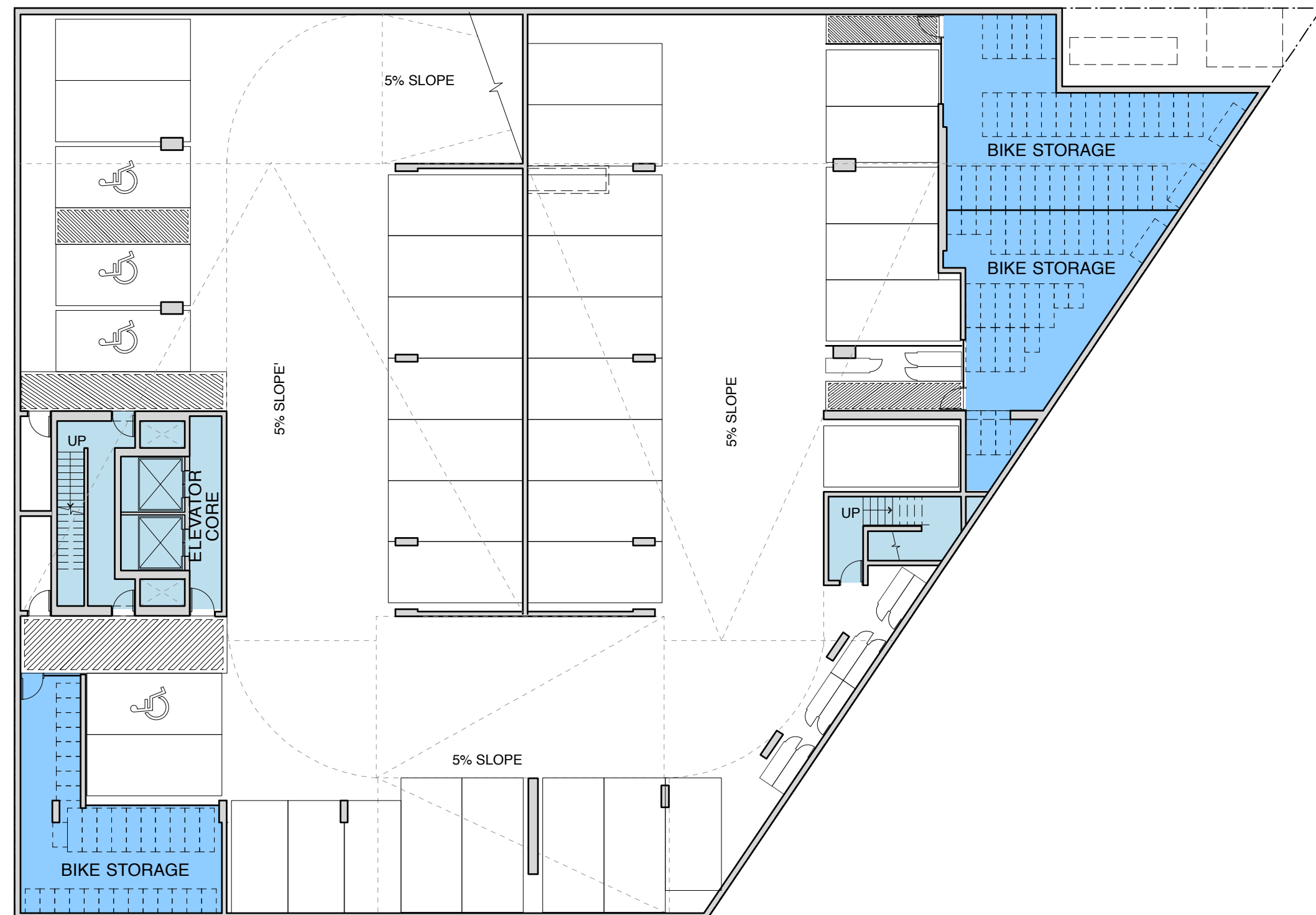
Parking access ramp



1 P1 Level Plan  
1/16" = 1'-0"



2 P2 Level Plan  
1/16" = 1'-0"



3 P3 Level Plan  
1/16" = 1'-0"

**Key**

	commercial
	residential - studio
	residential - 1 bed
	residential - 2 bed
	residential storage
	circulation
	social space
	bike store
	parkade
	refuse storage
	mech/elec room

All drawings and related documents are the property of Acton Ostry Architects Inc. and may not be reproduced in whole or in part without the Architect's permission. This drawing should not be used to calculate areas. Do not scale this drawing. All dimensions to be checked on site by the contractor and such dimensions to be their responsibility. All work must comply with the relevant Building Code or Building Bylaw and related documents. Drawing errors and omissions must be immediately reported to the Architect.

**issues**

25 Oct '12	Rezoning Letter of Inquiry
24 May '13	Issue for concurrent rezoning & development permit

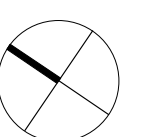
**revisions**

**ACTON OSTRY ARCHITECTS INC.**

111 E 8 Avenue  
Vancouver BC  
Canada V5T 1R8  
t 604 739 3344  
f 604 739 3355  
info@actonostroy.ca

**275 Kingsway**

scale	date
1/16" = 1'-0"	May 2013
project code	status
K275	RZ / DP
drawn	checked
KW	MO / RA



**Parkade Level Key Plans**

drawing number  
**A1.01**