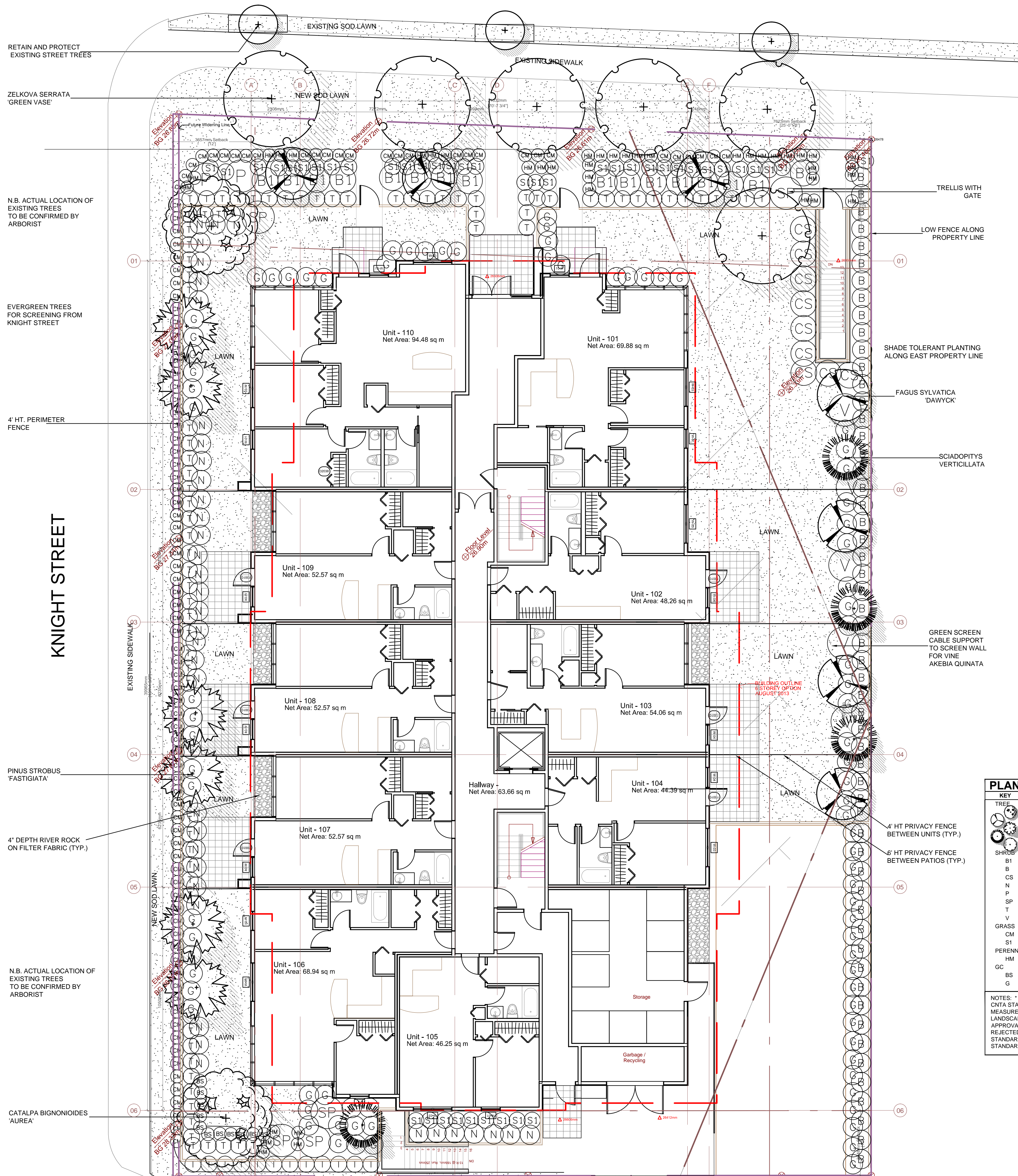


15TH AVENUE



FAGUS SYLVATICA 'DAWYCK'



CATALPA BIGNONIOIDES 'AUREA'



SCIADOPYTIS VERTICILLATA

TREE IMAGES



ZELKOVA SERRATA 'GREEN VASE'



PINUS STROBUS 'FASTIGIATA'

PLANT SCHEDULE					PMG PROJECT NUMBER: 13129
KEY	QTY	BOTANICAL NAME	COMMON NAME	PLANTED SIZE / REMARKS	
TREE	2	CATALPA BIGNONIOIDES 'AUREA'	GOLDEN CATALPA	6CM CAL; B&B	
	7	FAGUS SYLVATICA 'DAWYCK'	FASTIGIATE OR DAWYCK BEECH	6CM CAL; B&B	
	6	PINUS STROBUS 'FASTIGIATA'	COLUMNAR EASTERN WHITE PINE	3M HT; B&B	
	4	SCIADOPYTIS VERTICILLATA	JAPANESE UMBRELLA PINE	1.2M; B&B	
	6	ZELKOVA SERRATA 'GREEN VASE'	GREEN VASE ZELKOVA	6CM CAL; 1.5M STD; B&B	
SHRUB	16	BERBERIS DARWINII	DARWIN'S BARBERRY; YELLOW ORANGE	#2 POT; 25CM	
	56	BUXUS SEMPERVIRENS	COMMON BOXWOOD	#2 POT; 25CM	
	9	COTONEASTER SALICIFOLIUS REPENS	SPREADING WILLOWLEAF COTONEASTER	#2 POT; 50CM	
	38	NANDINA DOMESTICA 'MOONBAY'	COMPACT HEAVENLY BAMBOO	#2 POT; 40CM	
	2	PHYSSOCARPUS OPUULIFOLIUS 'DIABOLO'	PURPLE NINEBARK	#3 POT; 50CM	
	5	SPIRAEA X VON HOUTTEI	BRIDALWREATH SPIRAEA	#3 POT; 60CM	
	96	TAXUS BACCATA	ENGLISH WEW	1.5M B&B	
	5	VACCINIUM OVATUM 'THUNDERBIRD'	EVERGREEN HUCKLEBERRY	#3 POT; 60CM	
GRASS	102	CAREX OSHIMENSIS 'EVERGOLD'	EVERGOLD JAPANESE SEDGE	#1 POT	
	42	STIPA GIGANTEA	GIANT FEATHER GRASS	#1 POT	
PERENNIAL	40	HEMEROCALLIS	DAYLILY	#1 POT; 1-2 FAN	
GC	11	BLECHNIUM SPICANT	DEERFERN	#1 POT; 20CM	
	88	GAULTHERIA SHALLOON	SALAL	#1 POT; 20CM	

NOTES: \* PLANT SIZES IN THIS LIST ARE SPECIFIED ACCORDING TO THE BC LANDSCAPE STANDARD, LATEST EDITION. CONTAINER SIZES SPECIFIED AS PER CNRA STANDARDS. BOTH PLANT SIZE AND CONTAINER SIZE ARE THE MINIMUM ACCEPTABLE SIZES. \* REFER TO SPECIFICATIONS FOR DEFINED CONTAINER MEASUREMENTS AND OTHER PLANT MATERIAL REQUIREMENTS. \* SEARCH AND REVIEW: MAKE PLANT MATERIAL AVAILABLE FOR OPTIONAL REVIEW BY LANDSCAPE ARCHITECT AT SOURCE OF SUPPLY. AREA OF SEARCH TO INCLUDE LOWER MAINLAND AND FRASER VALLEY. \* SUBSTITUTIONS: OBTAIN WRITTEN APPROVAL FROM THE LANDSCAPE ARCHITECT PRIOR TO MAKING ANY SUBSTITUTIONS TO THE SPECIFIED MATERIAL. UNAPPROVED SUBSTITUTIONS WILL BE REJECTED. ALLOW A MINIMUM OF FIVE DAYS PRIOR TO DELIVERY FOR REQUEST TO SUBSTITUTE. SUBSTITUTIONS ARE SUBJECT TO BC LANDSCAPE STANDARD - DEFINITION OF CONDITIONS OF AVAILABILITY. ALL LANDSCAPE MATERIAL AND WORKMANSHIP MUST MEET OR EXCEED BC LANDSCAPE STANDARD'S LATEST EDITION. ALL PLANT MATERIAL MUST BE PROVIDED FROM CERTIFIED DISEASE FREE NURSERY

© Copyright reserved. This drawing and design is the property of PMG Landscape Architects and may not be reproduced or used for other projects without their permission.



Suite C100 - 4185 Still Creek Drive  
Burnaby, British Columbia, V5C 6G9  
p: 604 294-0011 ; f: 604 294-0022

SEAL:

NO.	DATE	REVISION DESCRIPTION	DR.
14	JAN 23	REV. PER NEW SITE PLAN/CITY COMMENTS	BA

CLIENT:

PROJECT:

**RESIDENTIAL TOWER**  
**KNIGHT AT 15TH VANCOUVER**

DRAWING TITLE:  
**LANDSCAPE PLAN - LEVEL 1**

DATE:	13.SEP.04	DRAWING NUMBER:	L2
SCALE:	1/8" = 1'-0"		
DRAWN:	NT		
DESIGN:	NT		
CHK'D:	PCM		OF 4