





# 5.0 ARCHITECTURAL DRAWINGS

## LEVEL P3

OVERALL PARKADE LEVEL P3

### LEGEND

-  STRATA RESIDENTIAL
-  AFFORDABLE HOUSING
-  YMCA MEMBERS
-  YMCA PUBLIC

### P3 PROVIDED VEHICULAR PARKING STALLS:

- YMCA
  - 16 Standard stalls
  - 16 P3 parking stalls**
- Affordable Housing
  - 31 Standard stalls
  - 1 Passenger loading stall
  - 3 Disability accessible stalls
  - 35 P3 parking stalls**
- Strata Residential
  - 65 Standard stalls
  - 65 P3 parking stalls**



# 5.0 ARCHITECTURAL DRAWINGS

LEVEL P2

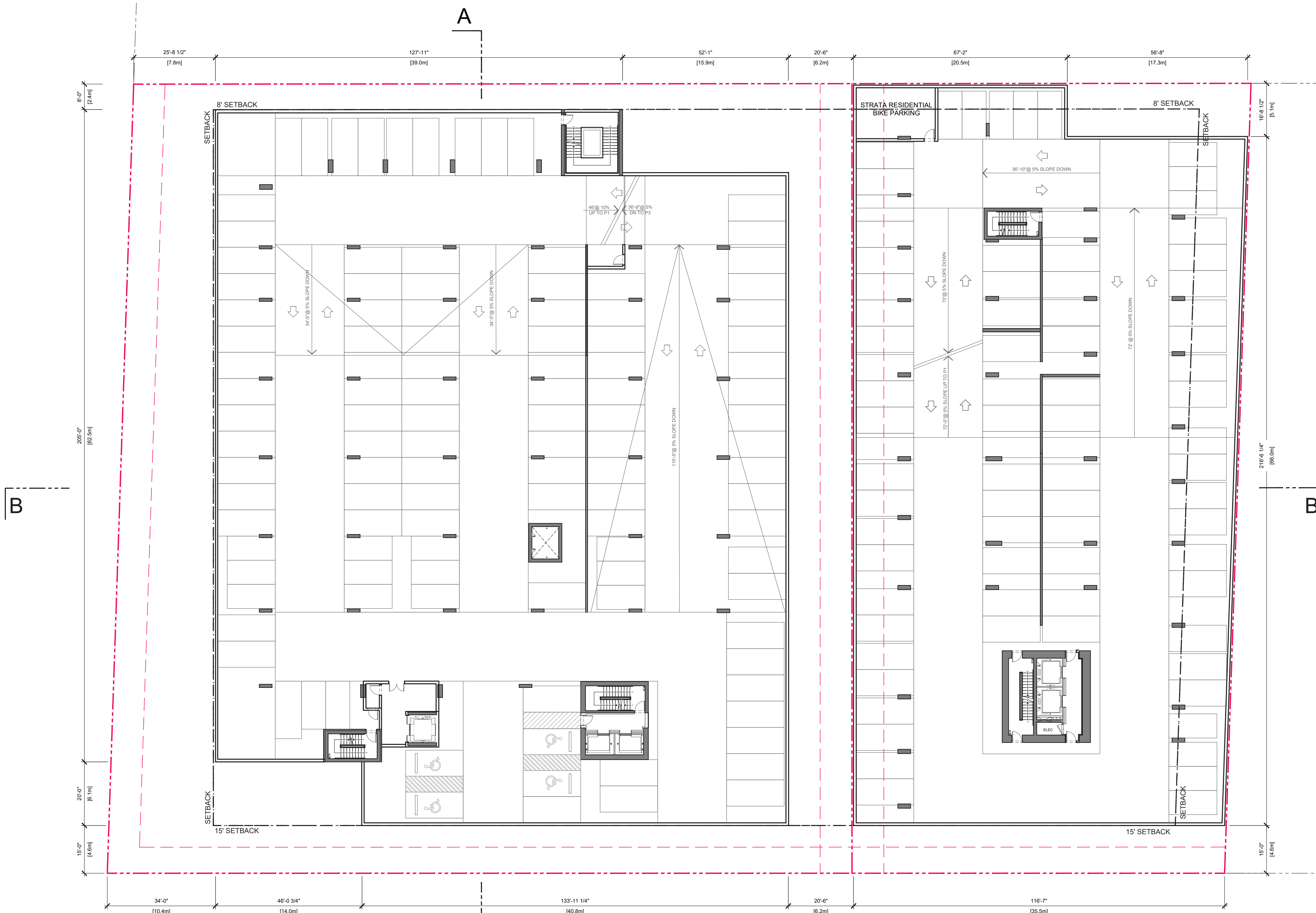
OVERALL PARKADE LEVEL P2

## LEGEND

- STRATA RESIDENTIAL
- AFFORDABLE HOUSING
- YMCA MEMBERS
- YMCA PUBLIC

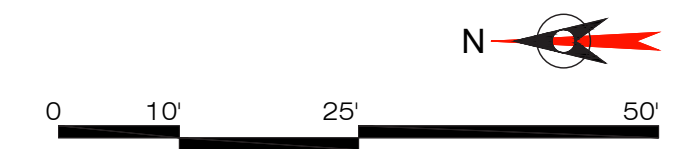
## P2 PROVIDED VEHICULAR PRK STALLS:

- YMCA
- 108 Standard stalls
  - 4 Disability accessible stalls
- 
- 112 P2 parking stalls**
- 
- Strata Residential
- 79 Standard stalls
- 
- 79 P2 parking stalls**



YMCA PARKING  
112 STALLS

STRATA RESIDENTIAL PARKING  
79 STALLS





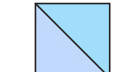

**endall elliot**  
associates  
architecture urban design

# 5.0 ARCHITECTURAL DRAWINGS

## LEVEL P1

OVERALL PARKADE LEVEL P1

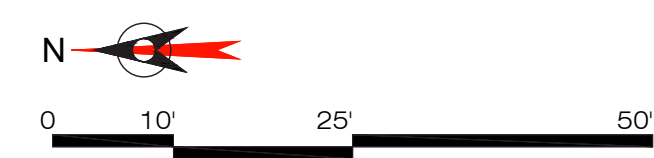
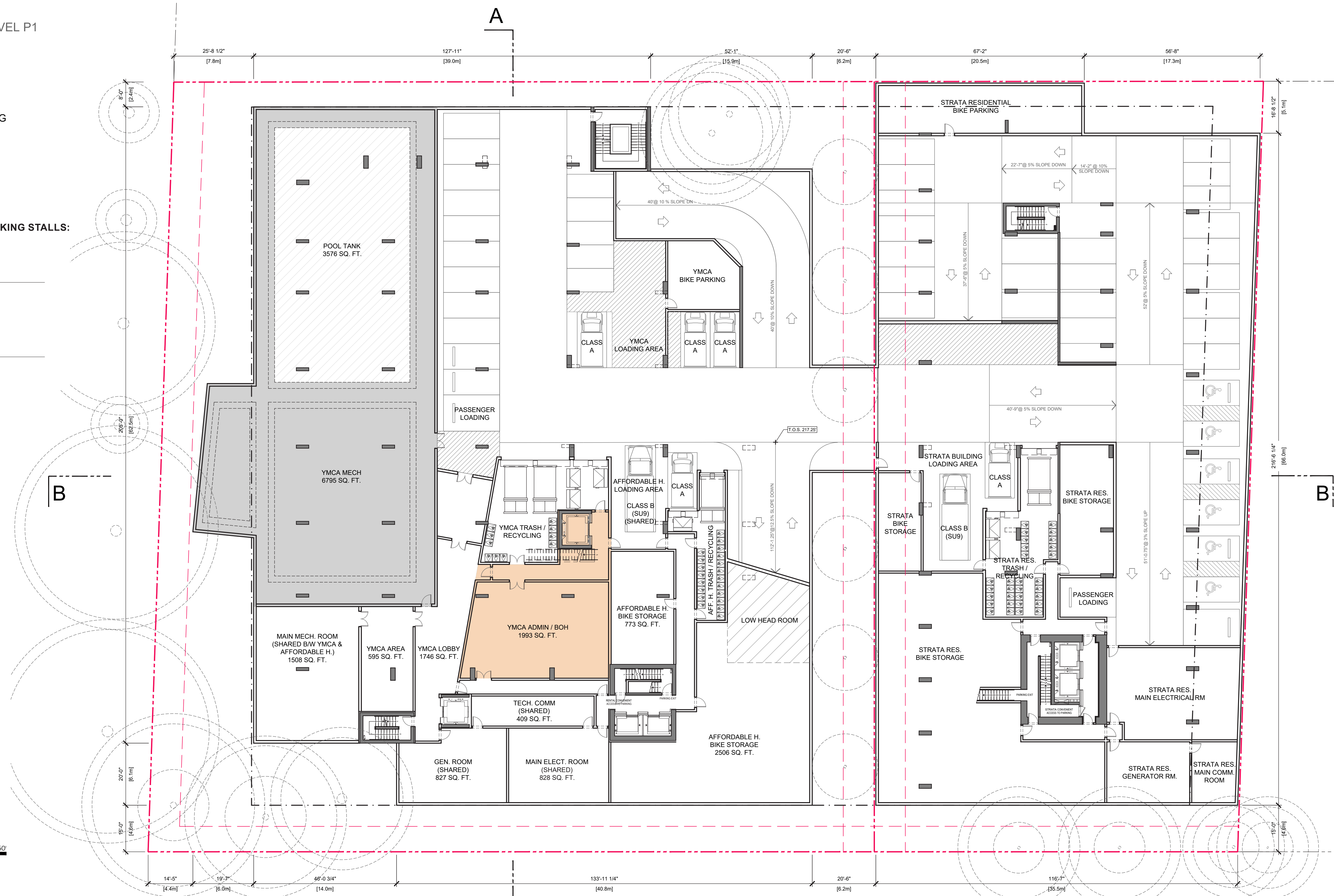
### LEGEND

-  STRATA RESIDENTIAL
-  AFFORDABLE HOUSING
-  YMCA MEMBERS
-  YMCA PUBLIC

### P1 PROVIDED VEHICULAR PARKING STALLS:

- YMCA**
- 16 Standard stalls
  - 1 Passenger loading stalls
- 
- 17 P1 parking stalls**

- Strata Residential**
- 24 Standard stalls
  - 1 Passenger Loading stalls
  - 6 Disability accessible stalls
- 
- 31 P1 parking stalls**



**endall elliot**  
associates  
architecture urban design

**YMCA PARKING**  
16 STALLS + 1 PASSENGER LOADING

**STRATA RESIDENTIAL PARKING**  
30 STALLS + 1 PASSENGER LOADING