

# Comparison: Previous and Current Scheme

## PREVIOUS UDP MASSING



## CURRENT UDP MASSING



COMPARISON STUDY			
SUBMISSION COMPARISON	UDP APPLICATION 2013.05.28	CURRENT APPLICATION 2013.10.10	DIFFERENCE
<b>Coverage</b>	2,215 69.40%	1,813.10 57%	(401.90) -13%
<b># of Units</b>	141	160	19 units
<b>Floor Area (sm)</b>			
Retail	560	1,212	652
Restaurant	809	954	145
Heritage	485	438	(47)
Residential	11,190	12,099	909
<b>Total FSR Area</b>	13,044	12,770	(274)
FSR	4.09	3.99	(0.10)
<b>Amenity (sm)</b>			
Indoor Area	73	268.95	195.95
Outdoor Area	405	984.4	579.40
<b>Balcony Area (sm)</b>	1,163	623.19	(539.81)
% of Floor Area	8.90%	4.88%	(0.04)
<b>Building Height (storeys)</b>	10	8	(2.00)
<b>Building Setback (m)</b>			
Front	0.6	0.6	-
Side	0.6	1.2	0.60
Lane or Rear	0.6	0.9	0.30
<b>Car Count</b>			
Retail	9	20	11.00
Restaurant	86	65	(21.00)
Residential	130	148	18.00
<b>Total</b>	225	233	8.00
<b>Sustainability</b>	65 LEED Points LEED GOLD	65 LEED Points LEED GOLD	na na

# Distant View Study



— RED INDICATES PREVIOUS UDP SCHEME

— WHITE INDICATES CURRENT SCHEME

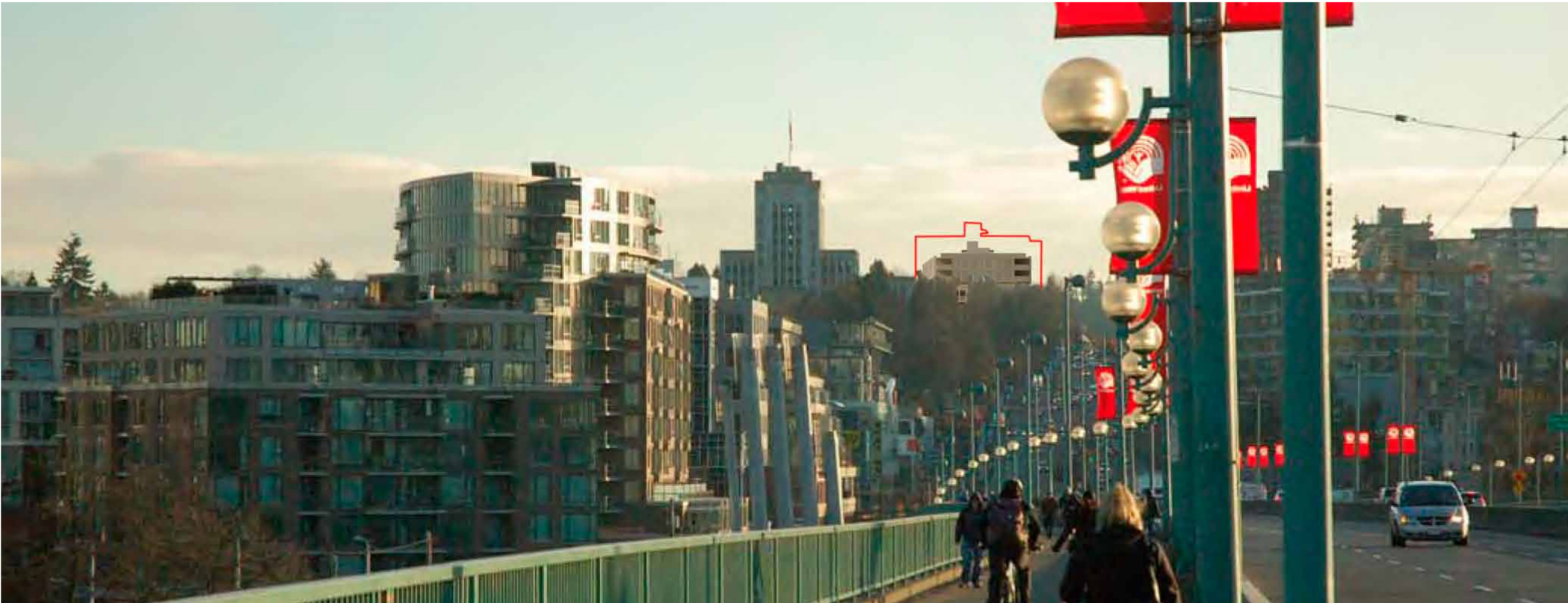
# Distant View Study



— RED INDICATES PREVIOUS UDP SCHEME

▬ WHITE INDICATES CURRENT SCHEME

# Distant View Study



— RED INDICATES PREVIOUS UDP SCHEME

— WHITE INDICATES CURRENT SCHEME