

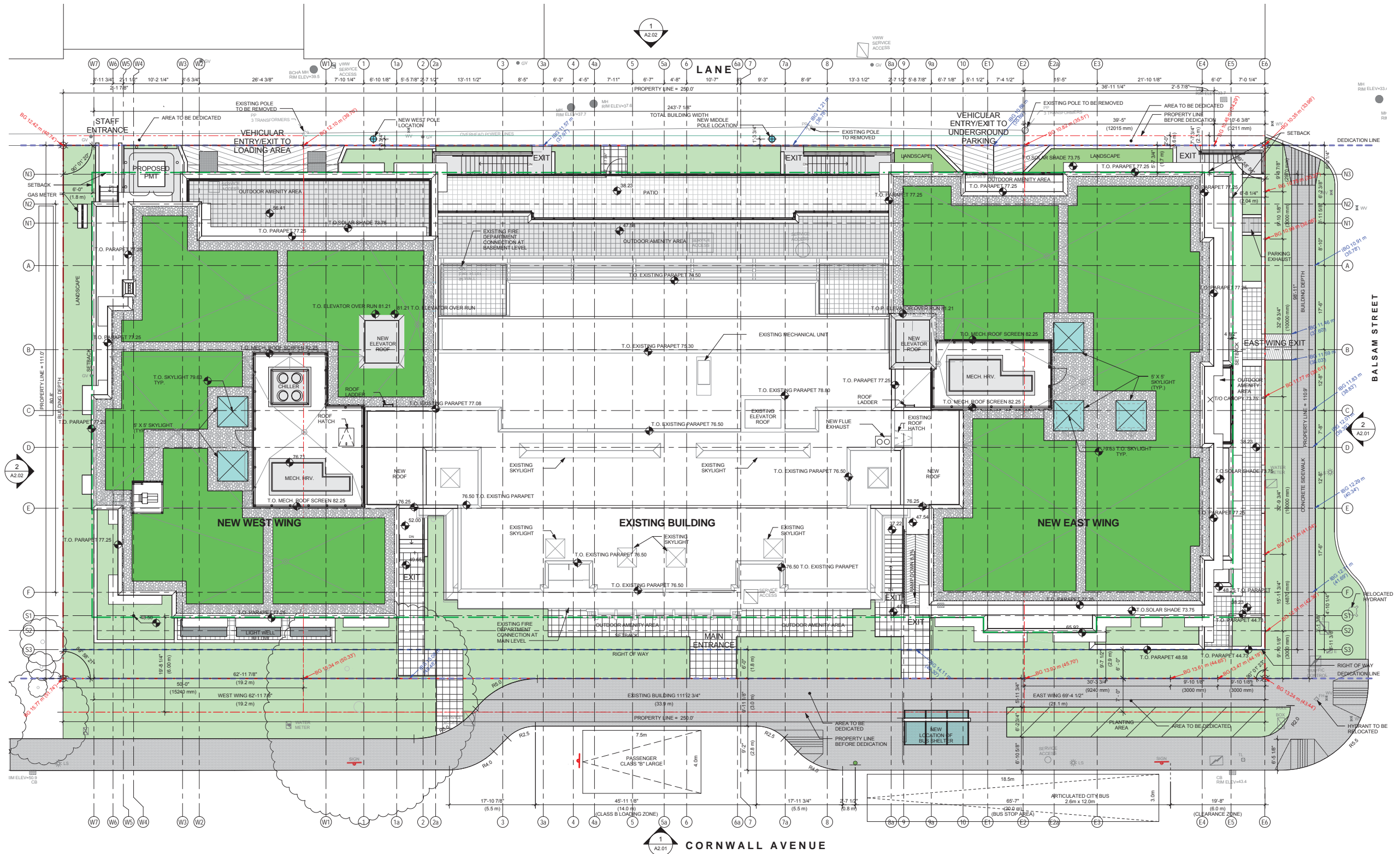


Point Grey Private Hospital Ltd.

COPYRIGHT:
All rights reserved. This drawing is the property of IBI Group Architects (Canada) Inc. and shall not be reproduced, stored in a retrieval system, or transmitted in any form or by any means, electronic, mechanical, photocopying, recording, or by any information storage and retrieval system, without the prior written permission of IBI Group Architects (Canada) Inc.

IBI Group Architects (Canada) Inc.
a member of the IBI Group of companies

NO.	ISSUANCE	STATUS	DATE
1	ISSUED FOR 30% CD		2016/09/13
2	ISSUED FOR 50% CD		2016/10/07
3	ISSUED FOR 75% CD		2016/11/25
4	ISSUED FOR REZONING		2017/01/27
5	ISSUED FOR DE		2017/01/27



LEGEND

BG 10.82m (35.51')	ELECTRICAL SERVICE BOX
BG 10.88m (35.69')	POWER POLE
PROPERTY LINE	TRAFFIC LIGHT
RIGHT OF WAY	LAMP STANDARD
SETBACK	STREET SIGN
	MANHOLE
	CATCH BASIN
	WATER VALVE
	FIRE HYDRANT
	GAS VALVE

NO.	ISSUANCE	STATUS	DATE
1	ISSUED FOR 30% CD		2016/09/13
2	ISSUED FOR 50% CD		2016/10/07
3	ISSUED FOR 75% CD		2016/11/25
4	ISSUED FOR REZONING		2017/01/27
5	ISSUED FOR DE		2017/01/27

PRIME CONSULTANT
IBI GROUP (Canada)
700 - 1285 West Pender Street
Vancouver, BC, Canada
Tel: (604) 687-8797 Fax: (604) 683-0482
ibigroup.com

PROJECT
POINT GREY PRIVATE HOSPITAL EXPANSION
2405-2423 Cornwall Ave, Vancouver, BC

PROJECT NO.: 100787
DRAWN BY:
CHECK BY: PL
SCALE: 1/8" = 1'-0"
DATE: 09/23/16
SHEET TITLE: SITE PLAN

SHEET NUMBER: A0.12
ISSUE:

2017/01/27 11:14:18 PM File Location: C:\Project\Local_Area\100787_IBI\PGPH\PGPH-Central_and_parking.dwg