

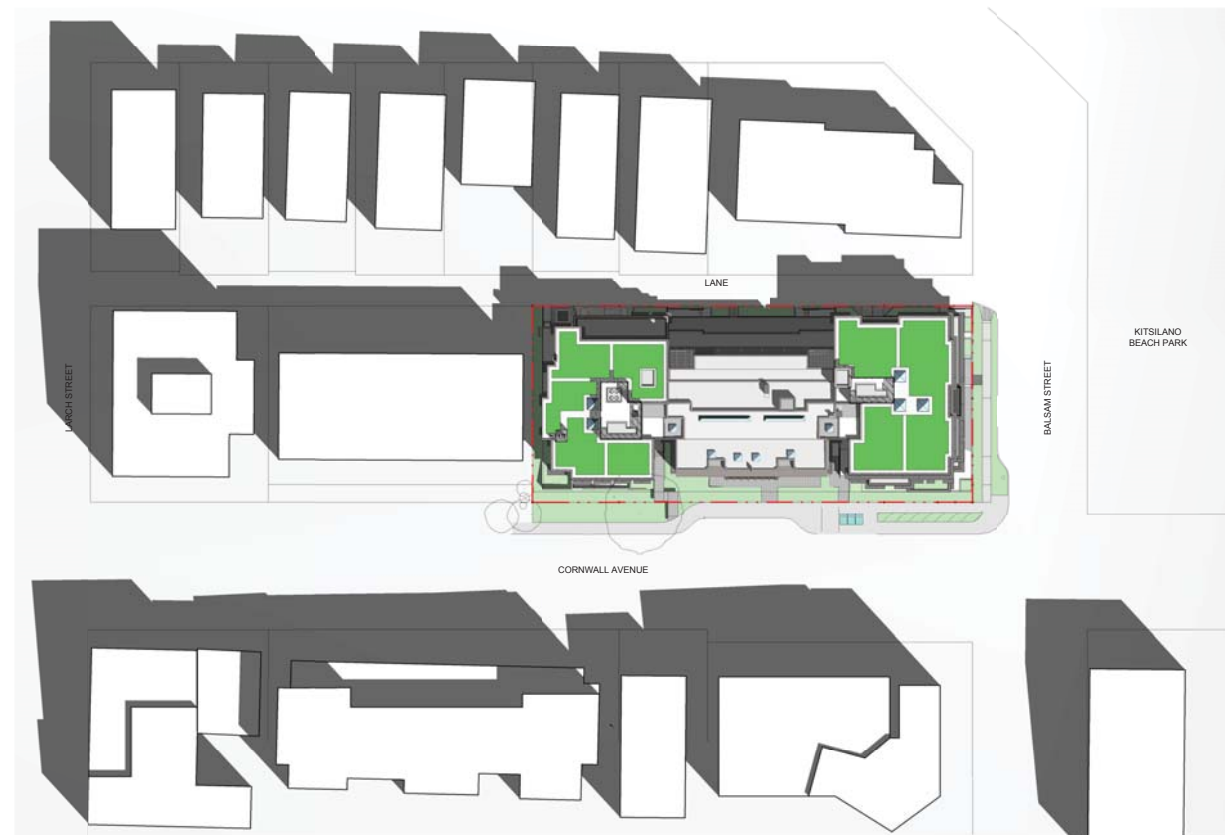


CLIENT
Point Grey Private
Hospital Ltd.

COPYRIGHT:
Any reproduction or distribution for any purpose other than authorized by IBI Group Architects (Canada) Inc. is prohibited. Where other third party precedents have been used, the copyright shall remain with the respective owner. Conditions of use shall be subject to the terms and conditions of any applicable license. IBI Group Architects (Canada) Inc. shall be responsible for any violations from the reproduction and distribution of the drawings. This drawing shall be submitted to IBI Group for approval before proceeding with fabrication.

IBI Group Architects (Canada) Inc.
is a member of the IBI Group of companies

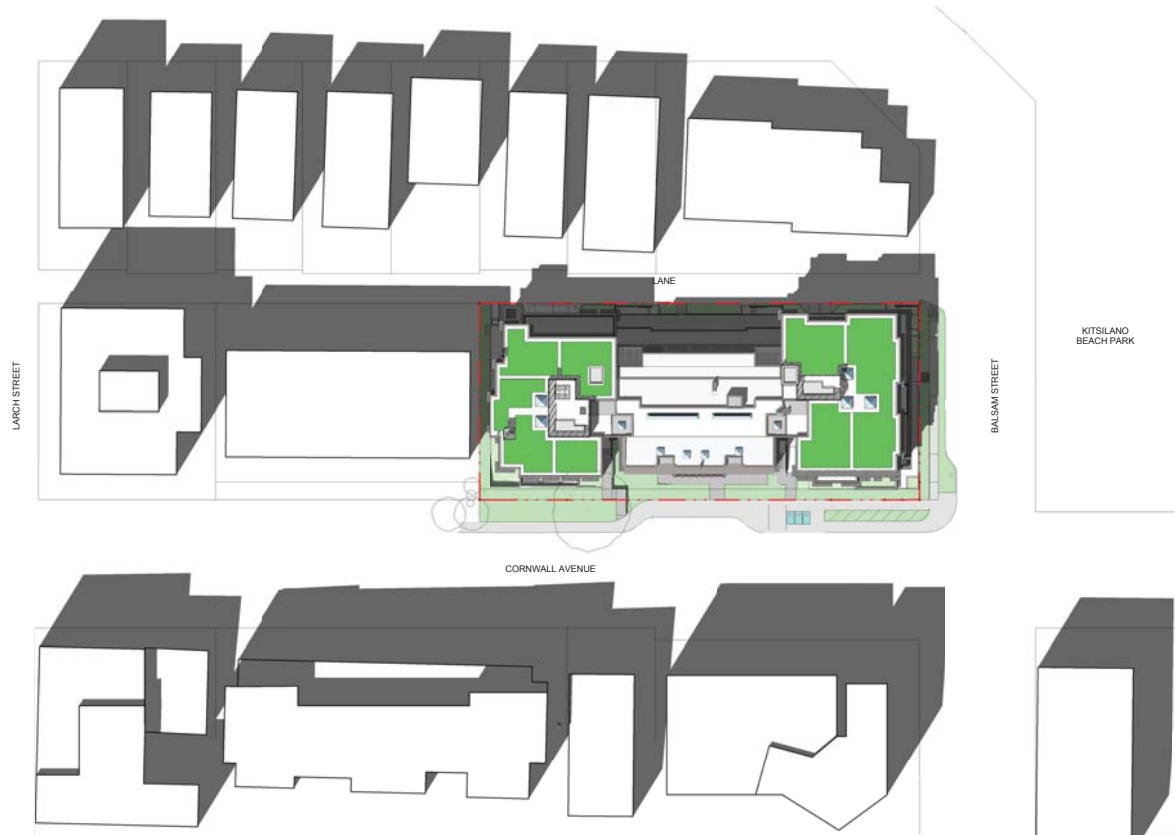
NO.	ISSUANCE	STATUS	DATE
5	ISSUED FOR DE		2017/01/27
4	ISSUED FOR REZONING		2017/01/27
3			
2			
1			



10:00 AM



NOON



2:00 PM

**MARCH 21
SPRING EQUINOX**

SEAL

SUB CONSULTANT

PRIME CONSULTANT
IBI GROUP (Canada)
700 - 1285 West Pender Street
Vancouver, BC, Canada
tel (604) 687-8797 fax (604) 683-0492
ibigroup.com

PROJECT
**POINT GREY PRIVATE
HOSPITAL EXPANSION**
2405-2423 Cornwall Ave, Vancouver, BC

PROJECT NO: 100787
DRAWN BY:
CHECK BY: PL
SCALE: NTS 1/4" = 1'-0"
DATE: 12/06/16

SHEET TITLE
**SHADOW ANALYSIS
MARCH 21**

SHEET NUMBER
A0.15

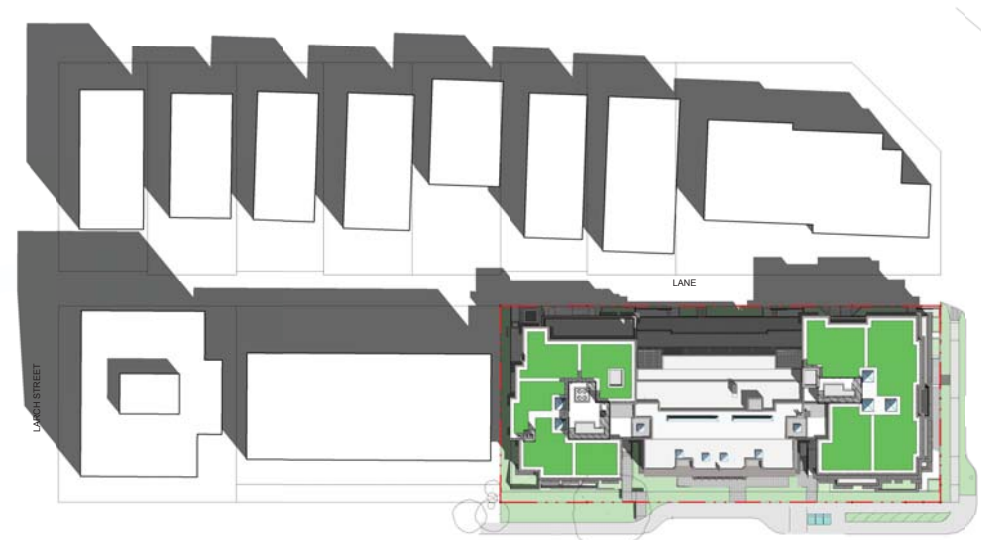


CLIENT
Point Grey Private
Hospital Ltd.

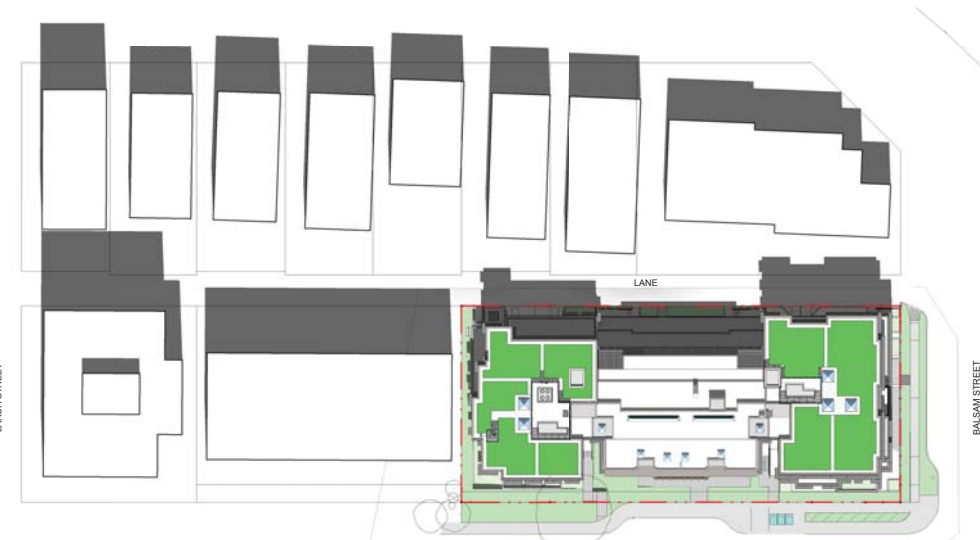
COPYRIGHT:
Any reproduction or distribution for any purpose other than authorized by IBI Group Architects (Canada) Inc. is prohibited. Where other third party precedents have been used, the copyright shall remain with the respective owner. Conditions that may apply to the use of any materials from the drawings and conditions shown on the drawings. This drawing shall be submitted to IBI Group for approval before proceeding with fabrication.

IBI Group Architects (Canada) Inc.
is a member of the IBI Group of companies

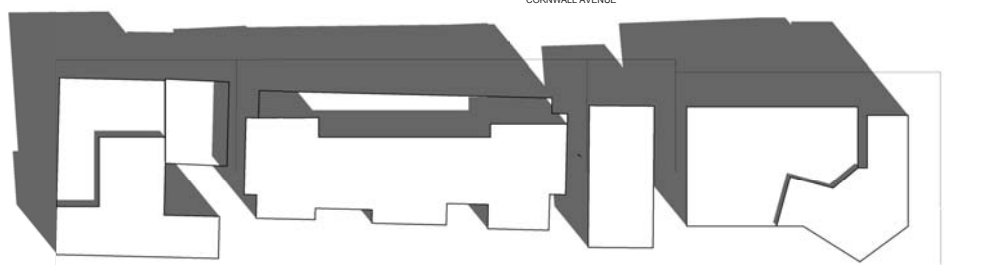
NO.	ISSUANCE	STATUS	DATE
5	ISSUED FOR DE		2017/01/27
4	ISSUED FOR REZONING		2017/01/27
3			
2			
1			



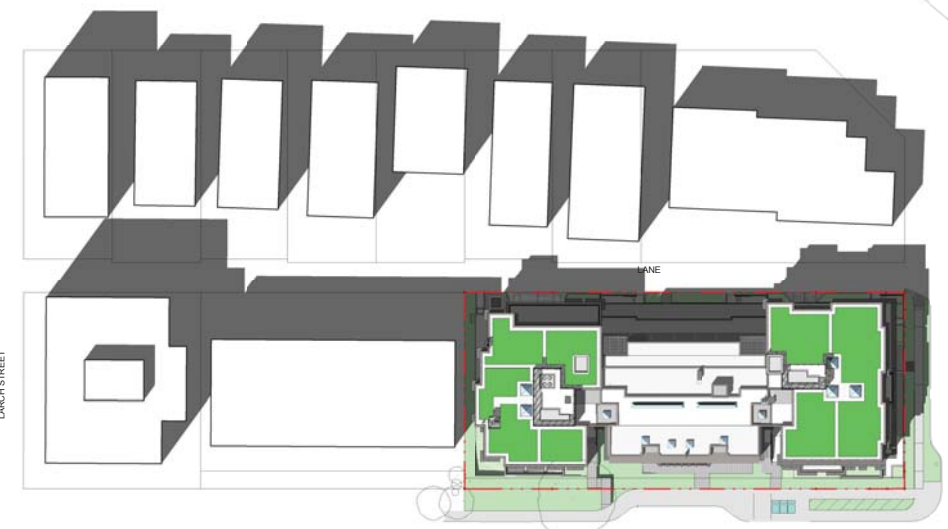
10:00 AM



NOON



2:00 PM



SEPTEMBER 21
FALL EQUINOX

SEAL

SUB CONSULTANT

PRIME CONSULTANT



IBI GROUP (Canada)
700 - 1285 West Pender Street
Vancouver, BC, Canada
tel (604) 687-8797 fax (604) 683-0492
ibigroup.com

PROJECT
**POINT GREY PRIVATE
HOSPITAL EXPANSION**
2405-2423 Cornwall Ave, Vancouver, BC

PROJECT NO: 100787
DRAWN BY:
CHECK BY: PL
SCALE: NTS47'0"
DATE: 12/06/16

SHEET TITLE
**SHADOW ANALYSIS
SEPTEMBER 21**

SHEET NUMBER
A0.16