

CLIENT

NO.	ISSUANCE	STATUS	DATE
5	ISSUED FOR DE		2017/01/27
4	ISSUED FOR REZONING		2017/01/27
3	ISSUED FOR 75% CD		2016/11/25
2			
1			

IBI Group Architects (Canada) Inc.
a member of the IBI Group of companies

PRIME CONSULTANT

IBI GROUP (Canada)
700 - 1285 West Pender Street
Vancouver, BC, Canada
tel: (604) 677-8797 fax: (604) 683-0482
ibigroup.com

PROJECT
POINT GREY PRIVATE HOSPITAL EXPANSION
2405-2423 Cornwall Ave, Vancouver, BC

PROJECT NO: 100787

DRAWN BY: PL
CHECKED BY: PL
SCALE: 1/4" = 1'-0"

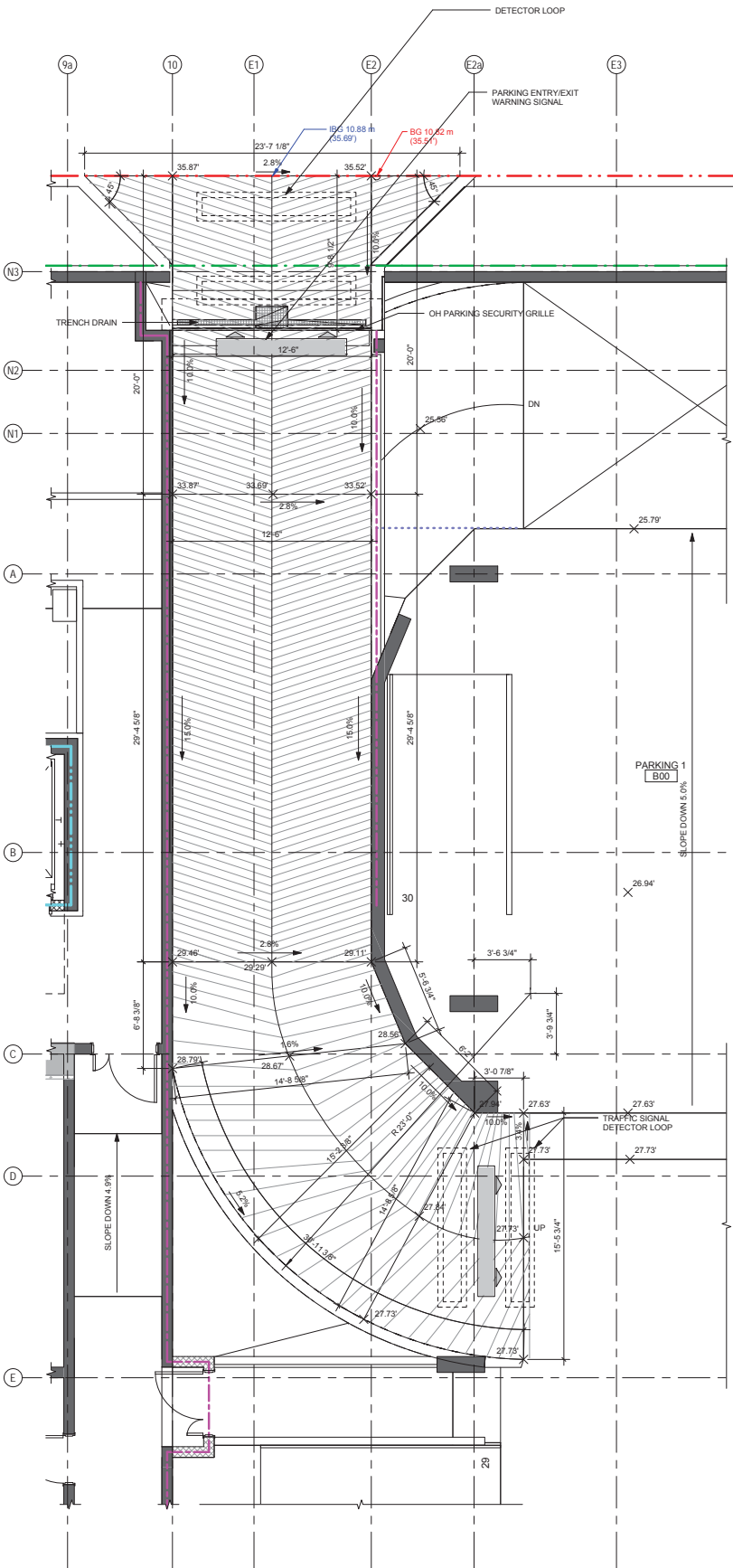
DATE: 10/27/16

SHEET TITLE
PARKING RAMPS

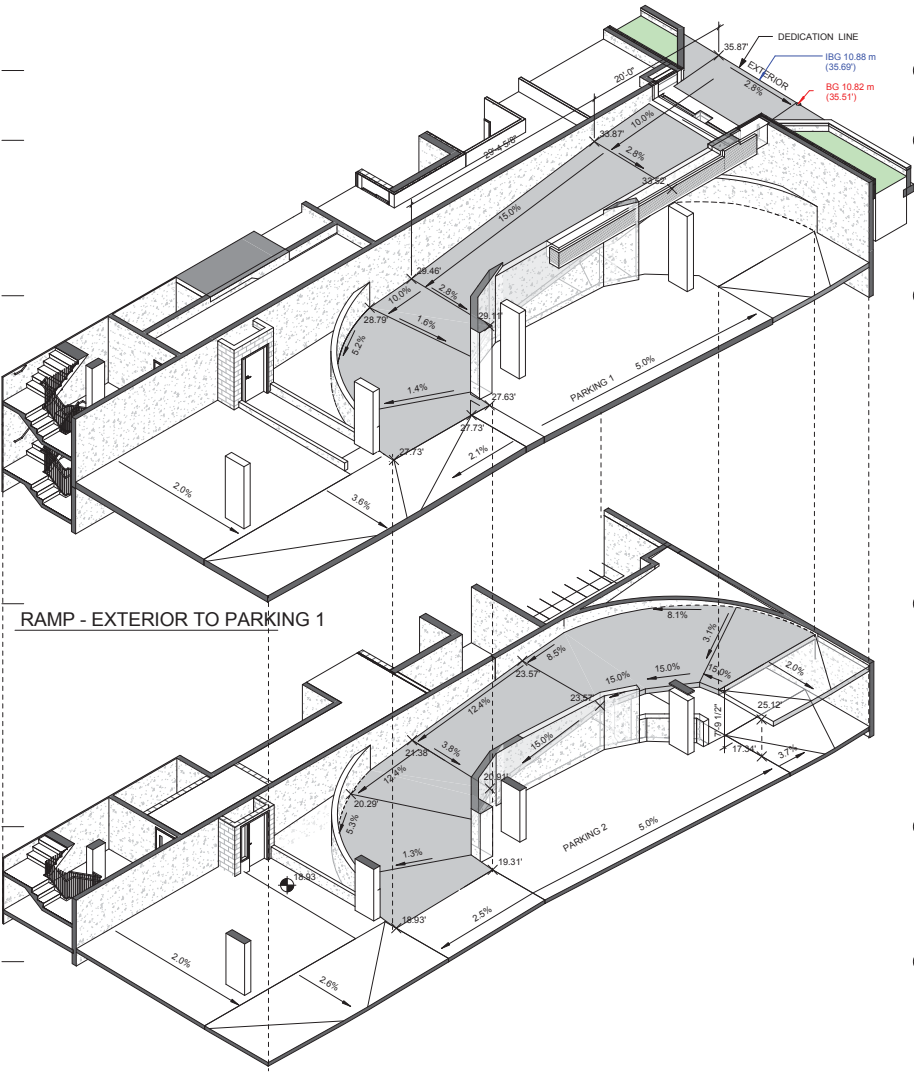
SHEET NUMBER

ISSUE

A4.11

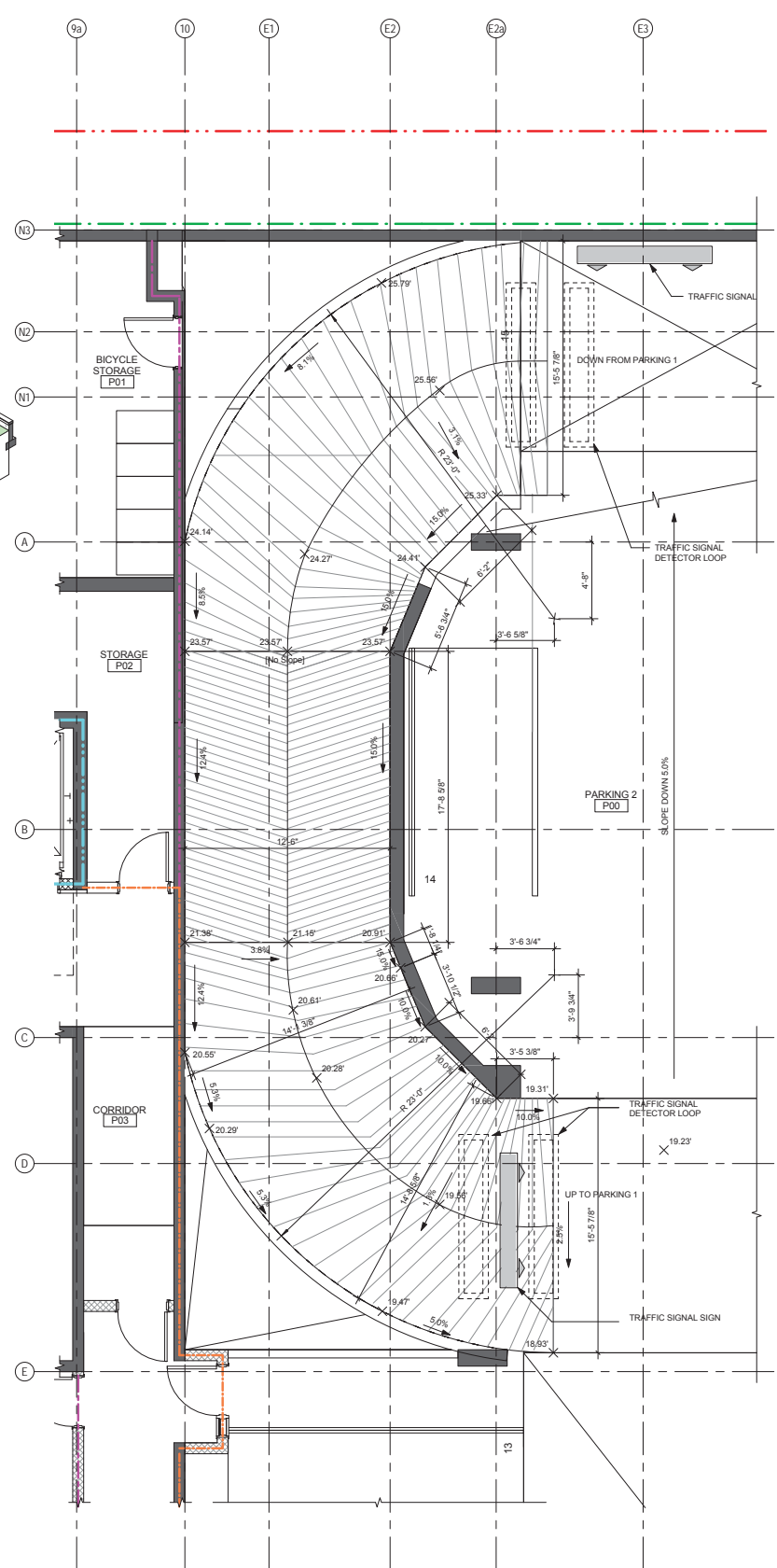


1 RAMP 1
SCALE: 1/4" = 1'-0"



RAMP - EXTERIOR TO PARKING 1

RAMP - PARKING 1 TO PARKING 2



3 RAMP 2
SCALE: 1/4" = 1'-0"

2017/01/27 6:17:38 PM File Location: C:\Project\Local_Arch\100787_IBI\PGPH\PGPH-Central_arch\plans.rvt