

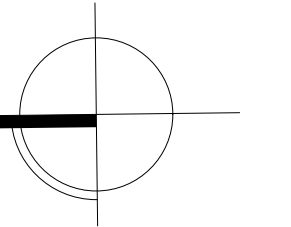


Integra

ARCHITECTURE INC.

2330-200 Granville Street
Vancouver, BC, V6C 1S4
www.integra-arch.com
Telephone: 604 688 4220

COPYRIGHT RESERVED. THIS DRAWING AND DESIGN IS AND AT ALL TIMES REMAINS THE EXCLUSIVE PROPERTY OF INTEGRARCHITECTURE INC. AND CANNOT BE USED WITHOUT THE ARCHITECT'S CONSENT.



[PROJECT TEAM]



[ARCHITECT SEAL]

[CLIENT]

Porte Communities

[PROJECT]

Garden Drive Apartments

2406-2488 Garden Drive
Vancouver, BC

[TITLE]

PARKING - P2

18436

[PROJECT]

1:100

[SCALE]

Thursday, August 1, 2019

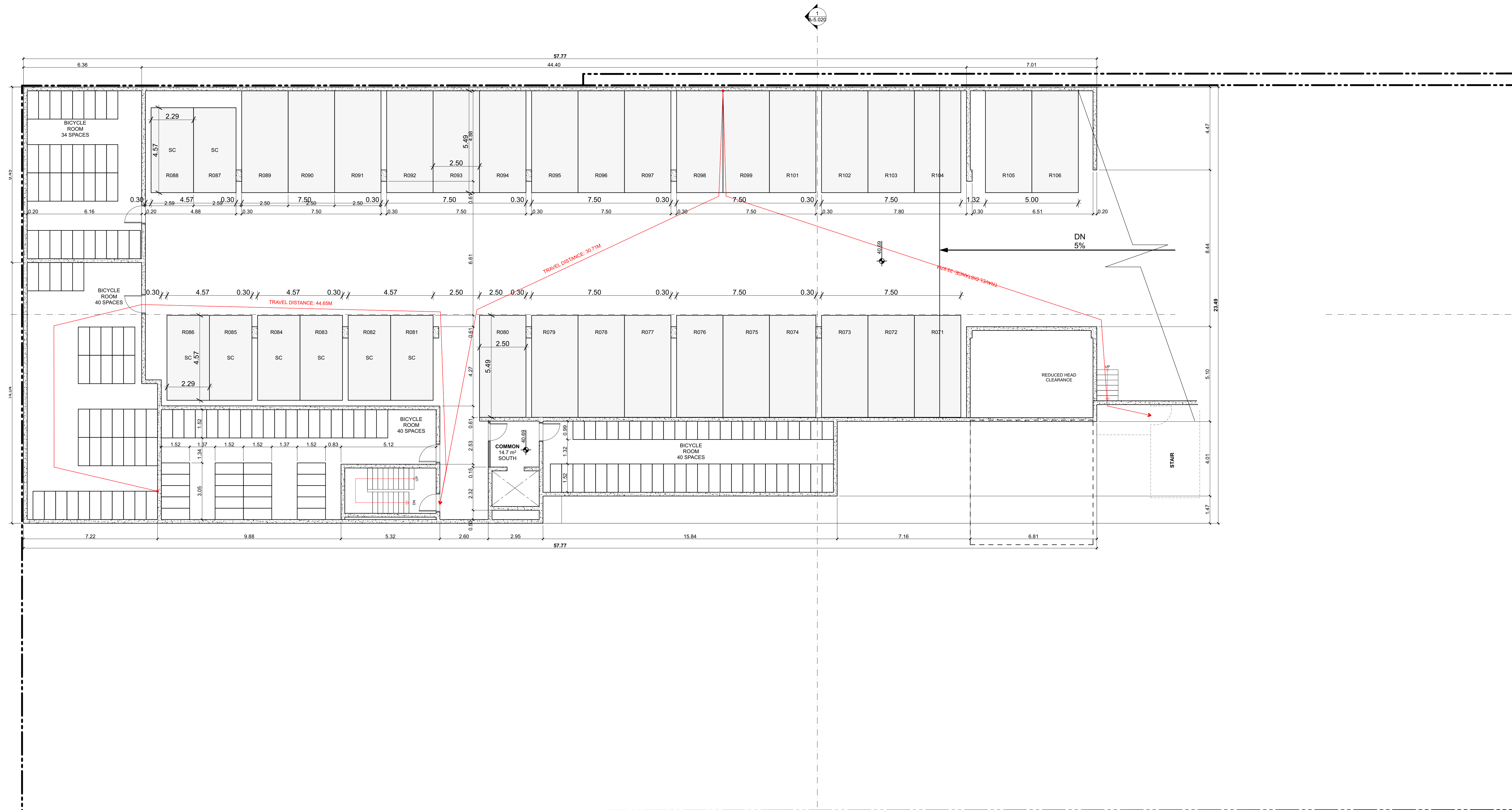
[DATE]

2 - RZ APPLICATION

[ISSUE]

[DRAWING]

A-2.000

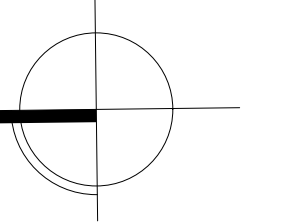




Integra
ARCHITECTURE INC.

2330-200 Granville Street
Vancouver, BC, V6C 1S4
www.integra-arch.com
Telephone: 604 688 4220

COPYRIGHT RESERVED. THIS DRAWING AND DESIGN IS AND AT ALL TIMES REMAINS THE EXCLUSIVE PROPERTY OF INTEGRA ARCHITECTURE INC. AND CANNOT BE USED WITHOUT THE ARCHITECT'S CONSENT.



(PROJECT TEAM)
porte
homes

(ARCHITECT SEAL)

(CLIENT)

Porte Communities

(PROJECT)

**Garden Drive
Apartments**

2406-2488 Garden Drive
Vancouver, BC

(TITLE)

PARKING - P1

(PROJECT)

18436

(SCALE)

1:100

(DATE)

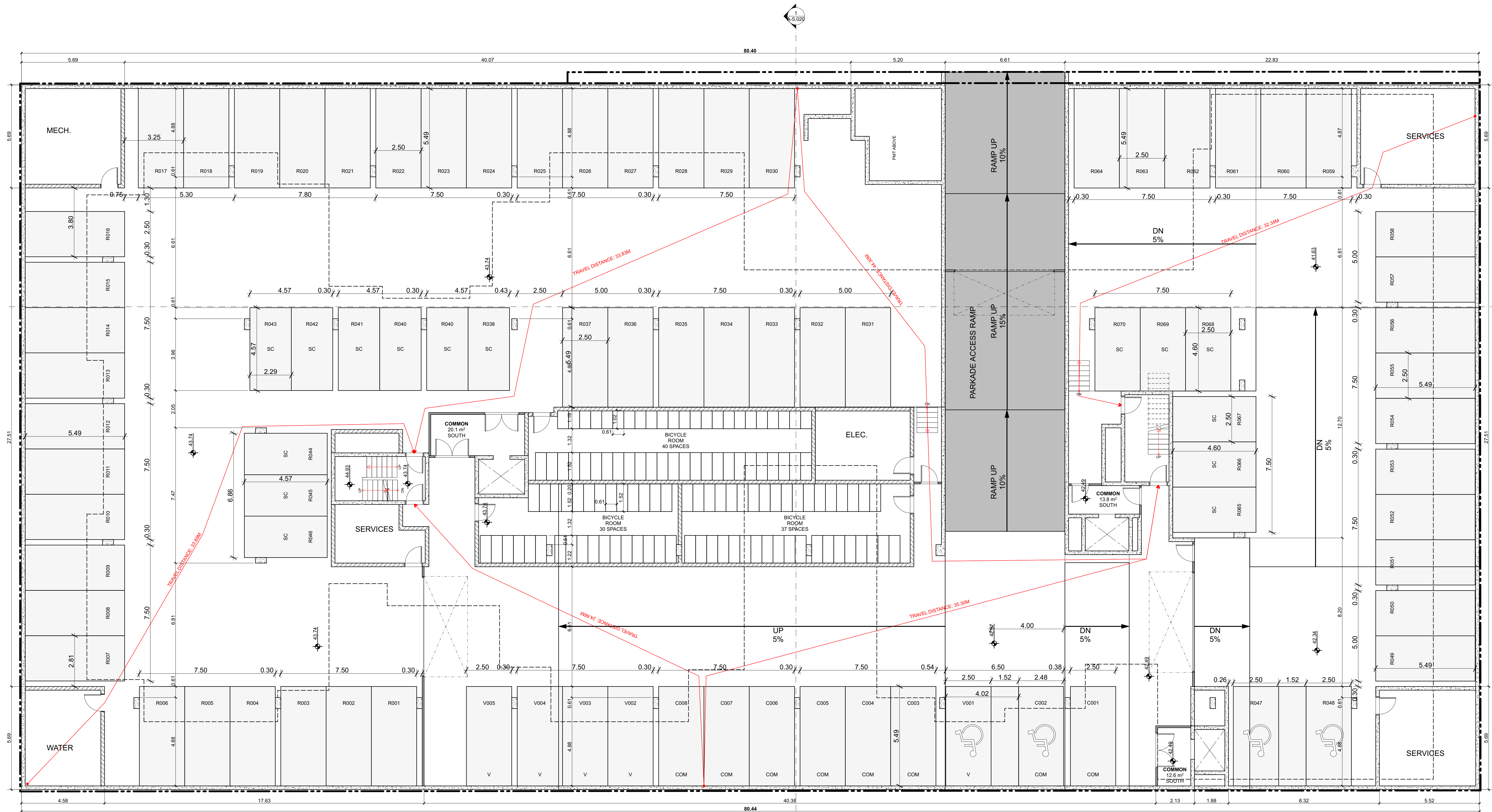
Thursday, August 1, 2019

(ISSUE)

2 - RZ APPLICATION

(DRAWING)

A-2.001



PARKING - P1