

**LANDSCAPE PLAN**

**LANDSCAPE SCHEDULE**

| TREES      | SYMBOL | QTY. | BOTANICAL NAME                      | COMMON NAME                | SIZE     |
|------------|--------|------|-------------------------------------|----------------------------|----------|
|            | PAR    | 1    | PARROTIA PERSICA 'VANESSA'          | PERSIAN IRONWOOD           | 6cm GAL. |
| CONIFERS   | THU    | 34   | THUJA OCCIDENTALIS 'SMARAGD'        | EMERALD GREEN CEDAR        | B&B 1.5M |
|            | TAF    | 4    | TAXUS BACCATA 'FASTIGIATA'          | IRISH YEW                  | B&B 1.5M |
| SHRUBS     | ARC    | 31   | ARCTOSTAPHYLOS UVA-URSI             | VANCOUVER JADE             | #2       |
|            | ILE    | 28   | ILEX CRENATA 'CONVEXA'              | CONVEX-LEAF JAPANESE HOLLY | #2       |
|            | MAH    | 39   | MAHONIA NERVOSA                     | CASCADE OREGON GRAPE       | #1       |
|            | MAX    | 1    | MAHONIA X MEDIA 'CHARITY'           | CHARITY HYBRID MAHONIA     | #5       |
|            | VIB    | 2    | VIBURNUM DAVIDII                    | DAVID'S VIBURNUM           | #5       |
| PERENNIALS | EUG    | 22   | EUPHORBIA CHARACIAS 'GLACIER BLUE'  | GLACIER BLUE SPURGE        | #2       |
|            | EUH    | 5    | EUPHORBIA CHARACIAS 'HUMPTY DUMPTY' | DWARF MEDITERRANEAN SPURGE | #2       |
|            | PAC    | 90   | PACHYSANDRA TERMINALIS 'VARIEGATA'  | VARIEGATED JAPANESE SPURGE | 10cm     |
| GRASSES    | OPH    | 35   | OPHIPOGON PLAINISCAPOS 'NIGRESCENS' | BLACK MONDO GRASS          | 10cm     |

**PLANTING NOTES**

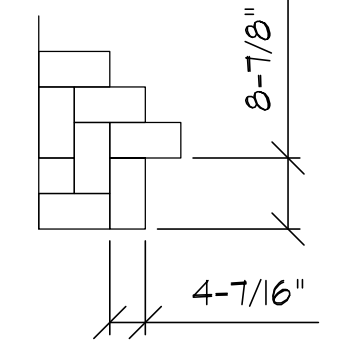
1. ALL MATERIALS AND EXECUTION OF LANDSCAPE WORKS SHALL CONFORM TO THE B.C.S.L.A./B.C.N.T.A. STANDARDS. REFER TO WRITTEN SPECIFICATIONS FOR COMPLETE LANDSCAPE DOCUMENTATION.
2. ALL LANDSCAPE CONTRACTORS SHALL ENSURE THE ON-SITE PLANTING MEDIUM/SOIL MEETS THE SPECIFICATIONS AND RECOMMENDATIONS OF THE SOIL ANALYSIS TAKEN AT THE TIME OF SUBSTANTIAL COMPLETION.
3. PLANTING MEDIUM DEPTHS:  
LAWN- 6"/150mm  
GROUND COVER- 12"/300mm  
SHRUBS- 18"/450mm  
TREES- 12"/300mm (AROUND AND BENEATH ROOTBALL)
4. ALL PLANT MATERIAL TO MEET MINIMUM SIZE REQUIREMENTS AS INDICATED IN THE PLANT LIST. QUALITY OF PLANT MATERIAL AND GRADING OF SITE TO CONFORM TO B.C.N.T.A. STANDARD FOR CONTAINER GROWN STOCK.
5. ALL PLANT MATERIAL TO BE SUPPLIED TO THE JOB SITE MUST BE OBTAINED FROM A NURSERY PARTICIPATING IN THE B.C.S.L.A. PHYTOPHTHORA RAMORUM CERTIFIED PROGRAM. PLANT MATERIAL PROVIDED BY THE CONTRACTOR FOUND TO BE CARRYING PR WILL BE REMOVED, DISPOSED OF AND REPLACED AT THE CONTRACTOR'S EXPENSE.
6. TREE PROTECTION MEASURES:  
ALL CONSTRUCTION, DEMOLITION, OR EXCAVATION IS TO CONFORM TO THE APPROVING AUTHORITY TREE PROTECTION BYLAWS.
7. TREE STAKING:  
ALL STAKING OF NEW TREES TO CONFORM TO STANDARDS SET BY THE B.C.S.L.A./B.C.N.T.A.

**PAVING NOTE:**

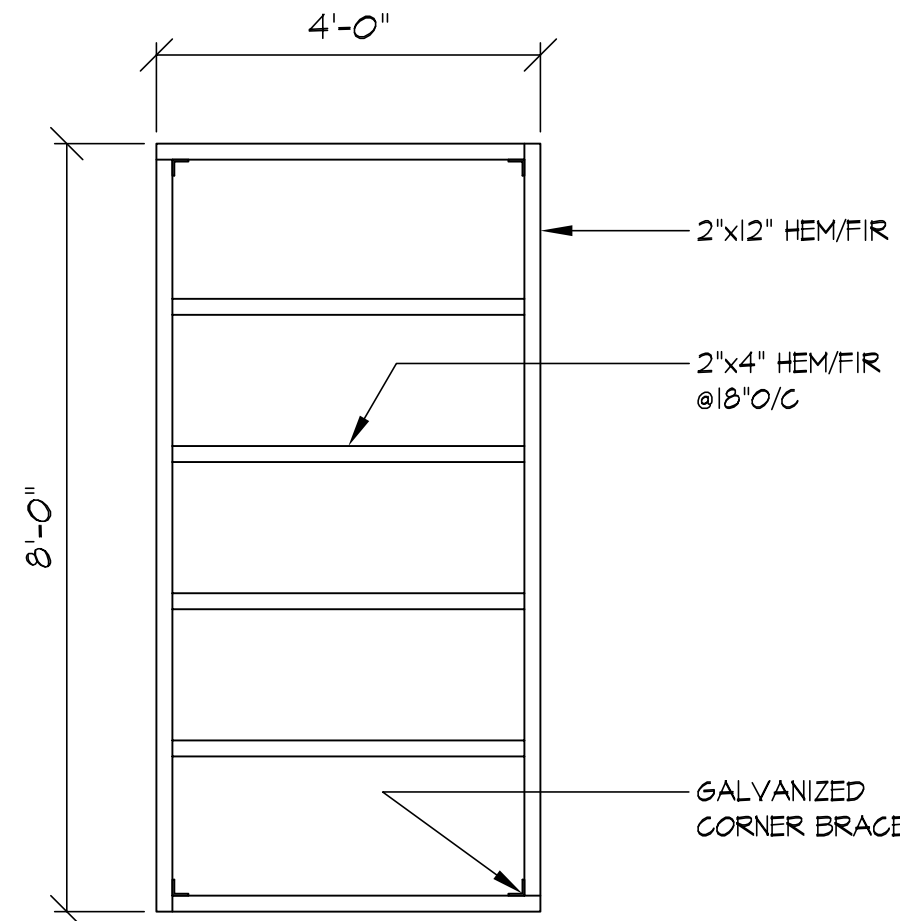
**PAVING MATERIALS:**  
PAVERS FOR FRONT PATIOS, FRONT ENTRANCE WALKWAY, WALKWAY TO STREET: ABBOTSFORD CONCRETE HYDRAPRESSED SLABS  
SIZE: 12"x24"  
STYLE: TEXADA  
COLOUR: NATURAL

PAVERS FOR EAST & WEST SIDE WALKWAY, REAR PATIO, PARKADE RAMP AND REAR UTILITY AREA:  
AQUAPAVE STANDARD  
COLOUR: SHADOW BLEND  
PAVING PATTERN: 90° HERRINGBONE

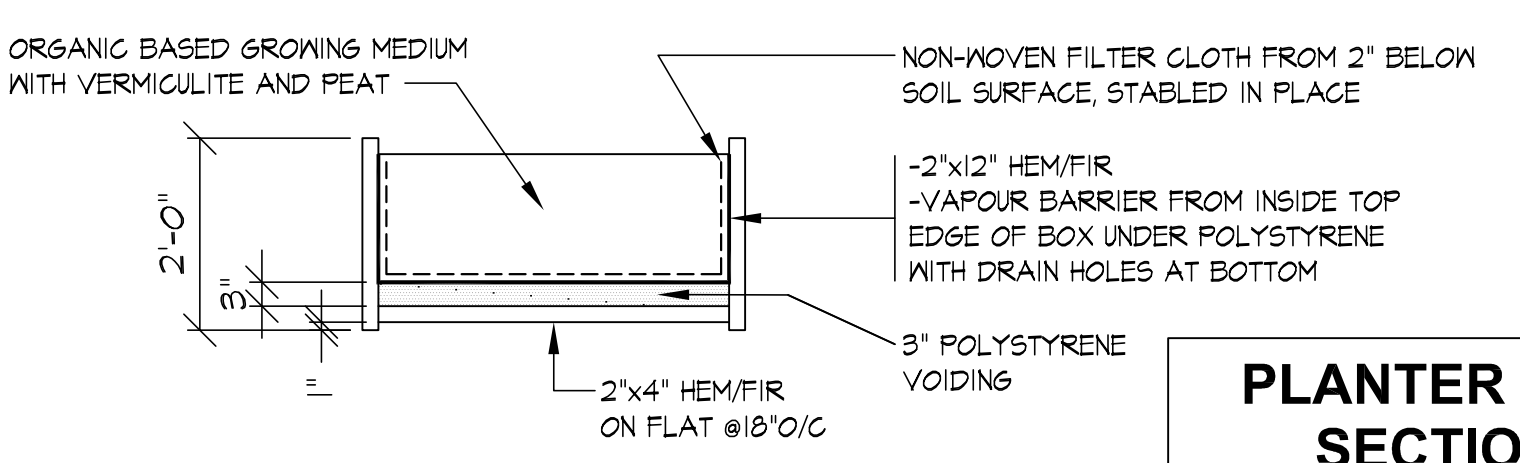
**PATTERN LAYOUT DETAIL:**  
PAVING PATTERN: 90° HERRINGBONE



\* LEED CREDITS FOR LOCAL MATERIALS, RUNOFF REDUCTION, CLEANING-UP RUNOFF & REDUCTION OF HEAT ISLANDS (AQUAPAVE STANDARD PAVERS)



**PLAN LAYOUT FOR ROOFTOP PLANTER BOX**  
N.T.S.



**PLANTER BOX SECTION**  
N.T.S.

**REVISIONS**

| DATE     | DESCRIPTION   |
|----------|---|
| 01/07/15 | PRELIM DESIGN   |
| 01/19/15 | REV1-PRELIM DESIGN. ADDED WALKWAYS ON WEST & EAST SIDES. REVISED LANDSCAPE PLAN.              |
| 01/25/15 | REV2-PRELIM DESIGN FOR SUBMISSION. ADDED HYDRO KIOSK; REMD WEST STAIRS; ENLARGE FRONT PATIOS. |
| 02/06/15 | REV3-PRELIM DESIGN FOR SUBMISSION. REMD EAST STAIRS; REV'D FRONT AND SIDE PATHWAYS.           |

**CRESCENT BAY DESIGN**  
  
LEANNE MASON  
2669 McBRIDE AVENUE  
SURREY B.C. V4A 3E9  
CELLULAR 604-313-4466  
leannemason@telus.net

**GENERAL NOTES:**

BUILDING CODES AND APPLICABLE REGULATIONS ARE SUBJECT TO CHANGE, AND SHALL BE VERIFIED WITH THE AUTHORITIES HAVING JURISDICTION BY THE GENERAL CONTRACTOR OR SUBTRADE CONTRACTOR BEFORE THE START OF WORK.

ALL MATERIALS AND EXECUTION OF LANDSCAPE WORKS SHALL CONFORM TO THE B.C.S.L.A./B.C.N.T.A. LANDSCAPE STANDARDS. REFER TO WRITTEN SPECIFICATIONS FOR COMPLETE LANDSCAPE DOCUMENTATION.

DO NOT SCALE DRAWING. DIMENSIONS SHOWN ARE APPROXIMATE. CONTRACTOR TO VERIFY ON SITE AND COORDINATE WITH ALL TRADES AND SUPPLIERS, EQUIPMENT AND SITE CONDITIONS.

THESE DRAWINGS ARE NOT FOR CONSTRUCTION PURPOSES UNLESS EXPRESSLY STATED. ALL RIGHTS RESERVED AND REPRODUCTION OR USE IN ANY FORM MUST BE APPROVED BY CRESCENT BAY DESIGN.

THESE DRAWINGS ARE INTENDED TO ILLUSTRATE A SCOPE AND A TYPE OF CONSTRUCTION IN ORDER TO FACILITATE APPROVALS BY THE LOCAL AUTHORITY FOR BUILDING REGULATIONS.

ALL UTILITIES ASSOCIATED WITH THE SITE MUST BE LOCATED AND MARKED PRIOR TO ANY EXCAVATION. CALL BC ONE CALL BEFORE YOU DIG.

UTILITIES SIZES AND LOCATIONS MAY NOT BE CORRECT. CONFIRM ON SITE AND BY CONTACTING THE APPROVING AUTHORITY CITY, GAS UTILITY COMPANY, HYDRO POWER COMPANY AND COMMUNICATION COMPANIES, AS APPLICABLE.

THE DESIGNER DOES NOT CLAIM THAT SURVEY INFORMATION IS CORRECT. REFER TO SURVEYOR'S DRAWING FOR APPROVED SITE INFORMATION.

DIMENSIONS SHOWN ARE APPROXIMATE. CONTRACTOR TO VERIFY ON SITE AND COORDINATE ON SITE WITH ALL TRADES, SUPPLIERS, EQUIPMENT AND SITE CONDITIONS.

IF THE GENERAL CONTRACTOR OR SUB TRADE CONTRACTOR FAILS TO REPORT A DISCREPANCY TO THE LANDSCAPE DESIGNER AND ARCHITECT, OR FAILS TO ACT ON ANY CHANGE NOTICE ISSUED BY THE LANDSCAPE DESIGNER AND ARCHITECT, ALL REPERCUSSIONS OF THIS DECISION WILL BE THE CONTRACTORS RESPONSIBILITY.

**BC ONE CALL**  
CALL BEFORE YOU DIG  
1-800-474-6888  
OR BY CELLULAR \*6888  
VANCOUVER AREA 604-257-1940  
  
CALL AT LEAST TWO FULL WORKING DAYS BEFORE YOU PLAN TO DIG

**PROJECT**  
GALT STREET FLATS

**CIVIC ADDRESS:**  
2312, 2320, 2328 GALT STREET  
VANCOUVER B.C.

**LEGAL:**  
LOTS 23 & 4 OF LOT B BLOCKS 6 TO 8 OF BLOCK 8, DISTRICT LOT 343.  
N.W.D., PLAN 2201

**DRAWING CONTENTS**

LANDSCAPE PLAN

|                        |                |              |
|------------------------|----------------|--------------|
| SCALE: 1/8" = 1'-0"    | DRAWN BY: JM   | DRAWING NO.: |
| DATE: MO/D/YR 01/07/15 | CHECKED BY: LM | <b>L1</b>    |