



2 1/2 STOREY HOUSES



2324 W. 8TH AVE - AFTER CONVERSION TO 3 UNIT DWELLING

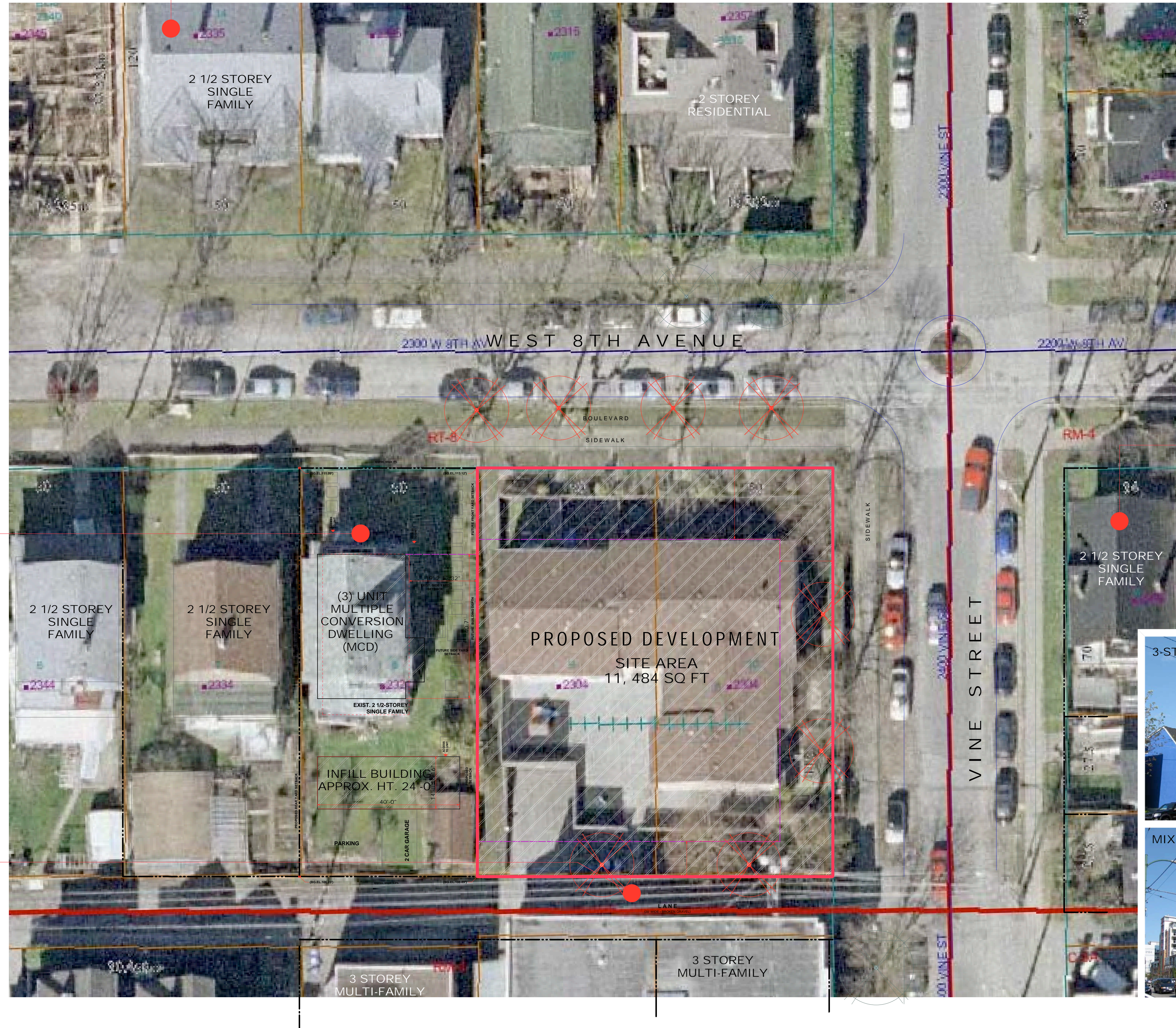
ADJACENT PROPERTY



LANE



0 10 30 FT
SCALE 1/16" = 1'-0"



2 1/2 STOREY SINGLE FAMILY



3-STOREY MULTI-FAMILY-BROADWAY



MIXED USE - ALONG BROADWAY

CONTEXT PLAN / SITE PHOTOGRAPHS

PROPOSED HOUSING FOR BCPA HOUSING SOCIETY
2304 WEST 8TH AVENUE, VANCOUVER, BC

BC PARAPLEGIC ASSN. HOUSING SOCIETY
KITS HOUSE NEIGHBOURHOOD ASSN.

416 W. PENDER ST.
VANCOUVER,
BC, V6B 1T5
T 604.688.4220
F 604.688.4270
[info@integrarch.com]

INTEGRA
ARCHITECTURE INC.

A-0.10

RZ / DE APPLICATION / IUP - ISSUE 3
JUL. 22/ 2009