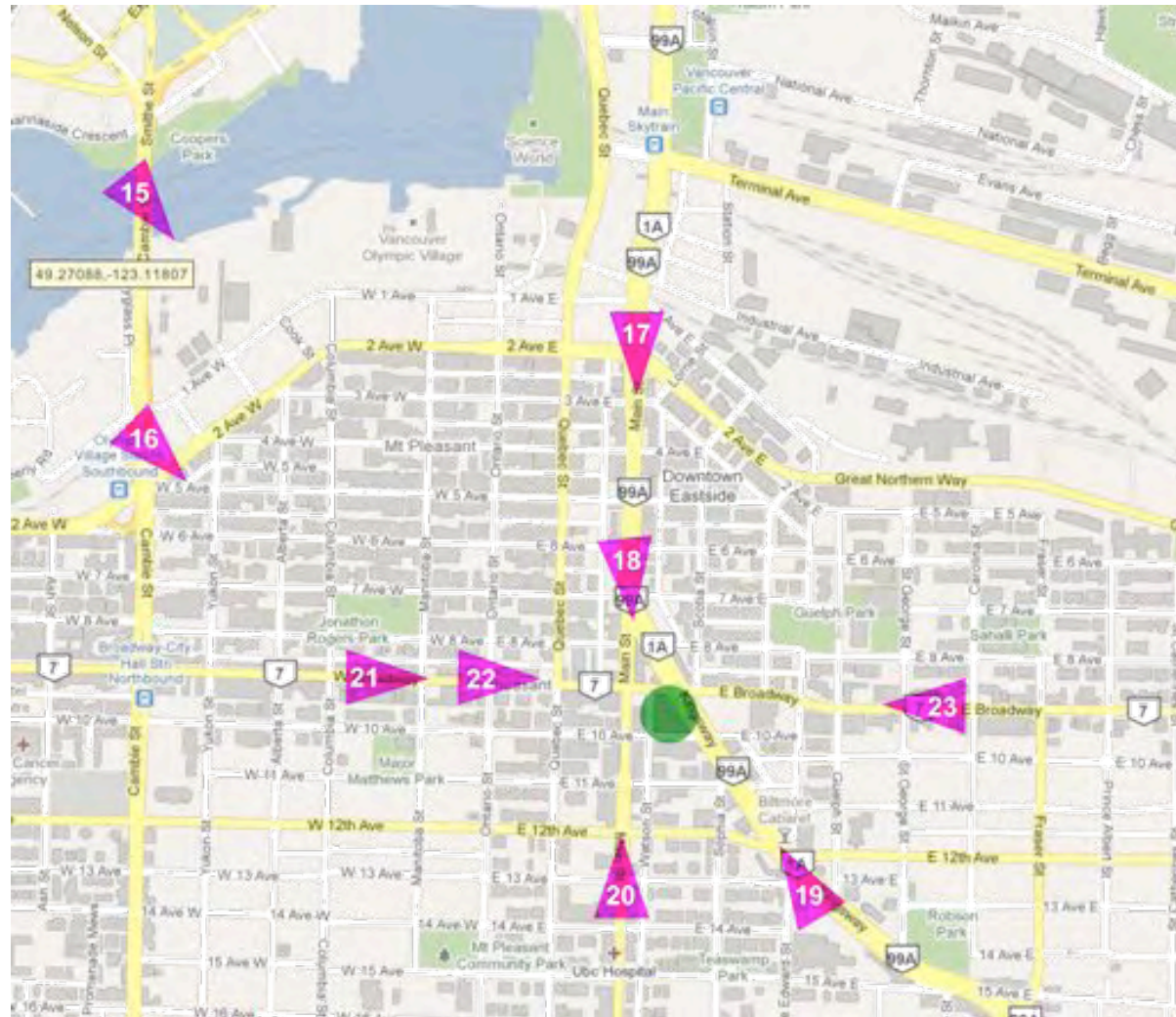




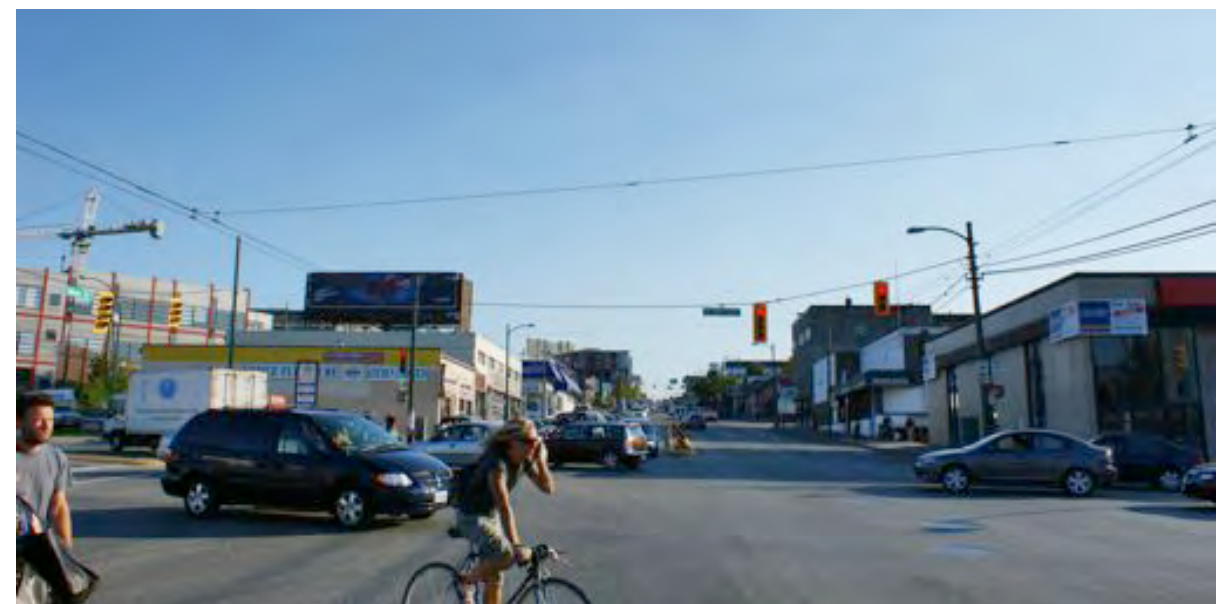
15 view from mid-span of Cambie bridge



key plan



16 view from south end of Cambie bridge



17 intersection of 2nd Avenue and Main Street

issues

26 Jul 10 Issued for Rezoning

revisions

- △ 2 Jun 11 Revised Rezoning Submission
- △ 6 Oct 11 Revised Rezoning Submission

**ACTON OSTRY**  
ARCHITECTS INC

111 E 8 Avenue  
Vancouver BC  
Canada V5T 1R8  
t 604.739.3344  
f 604.739.3355  
info@actonostroy.ca

**Kingsway +  
Broadway**

Rize Alliance  
Kingsway + Broadway

scale	date
mts	6 Oct 11
project code	status
KWY	Rezoning
drawn	checked
AC	RA

**Street Level View  
Studies**

drawing number  
**A4.04**



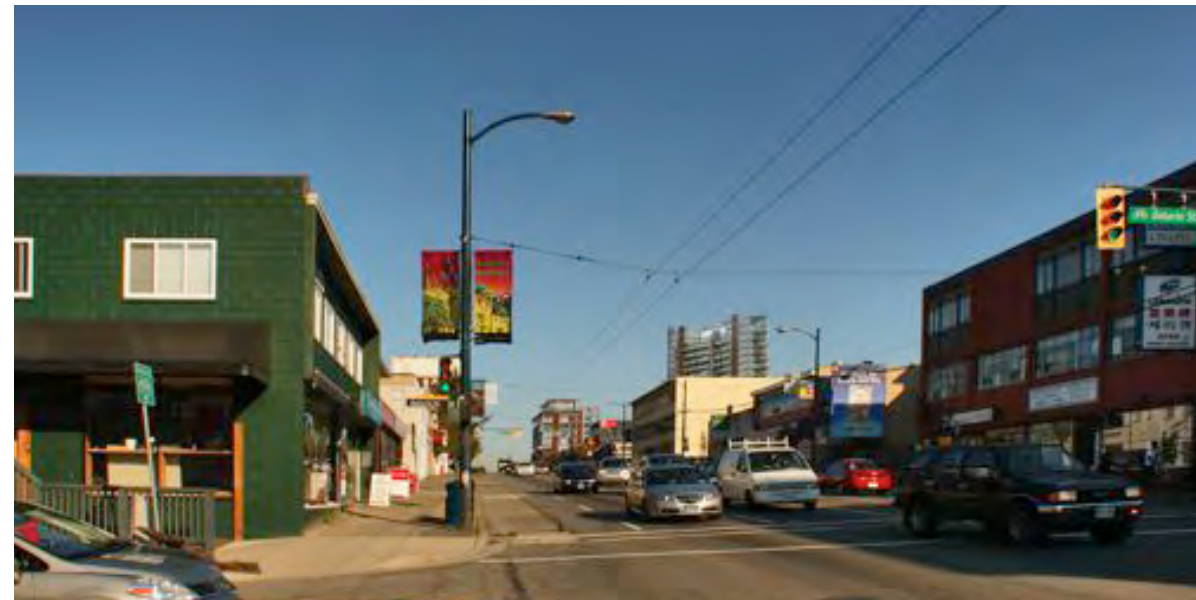
18 intersection of Main Street and Kingsway



21 intersection of Broadway and Columbia Street



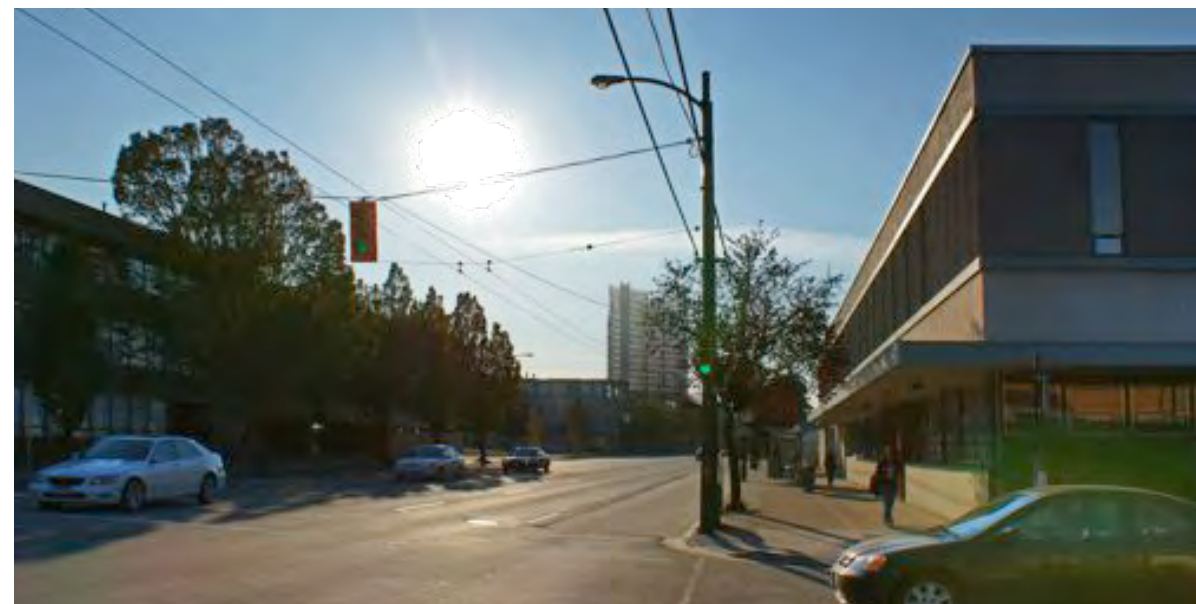
19 intersection of 12th Avenue and Kingsway



22 intersection of Broadway



20 intersection of Main Street and 12th Avenue



23 intersection of Broadway and St George Street

All drawings and related documents are the property of Acton Ostry Architects Inc. and may not be reproduced in whole or in part without the Architect's permission. This drawing should not be used to calculate areas. Do not scale this drawing. All dimensions to be checked on site by the contractor and such dimensions to be their responsibility. All work must comply with the relevant Building Code or Building Bylaw and related documents. Drawing errors and omissions must be immediately reported to the Architect.

issues

26 Jul 10 Issued for Rezoning

revisions

- △ 2 Jun 11 Revised Rezoning Submission
- △ 6 Oct 11 Revised Rezoning Submission

**ACTON OSTRY**  
ARCHITECTS INC

111 E 8 Avenue  
Vancouver BC  
Canada V5T 1R8  
t 604.739.3344  
f 604.739.3355  
info@actonostroy.ca

**Kingsway +  
Broadway**

Rize Alliance  
Kingsway + Broadway

scale	date
nts	6 Oct 11
project code	status
KWY	Rezoning
drawn	checked
AC	RA

**Street Level View  
Studies**

drawing number  
**A4.05**