

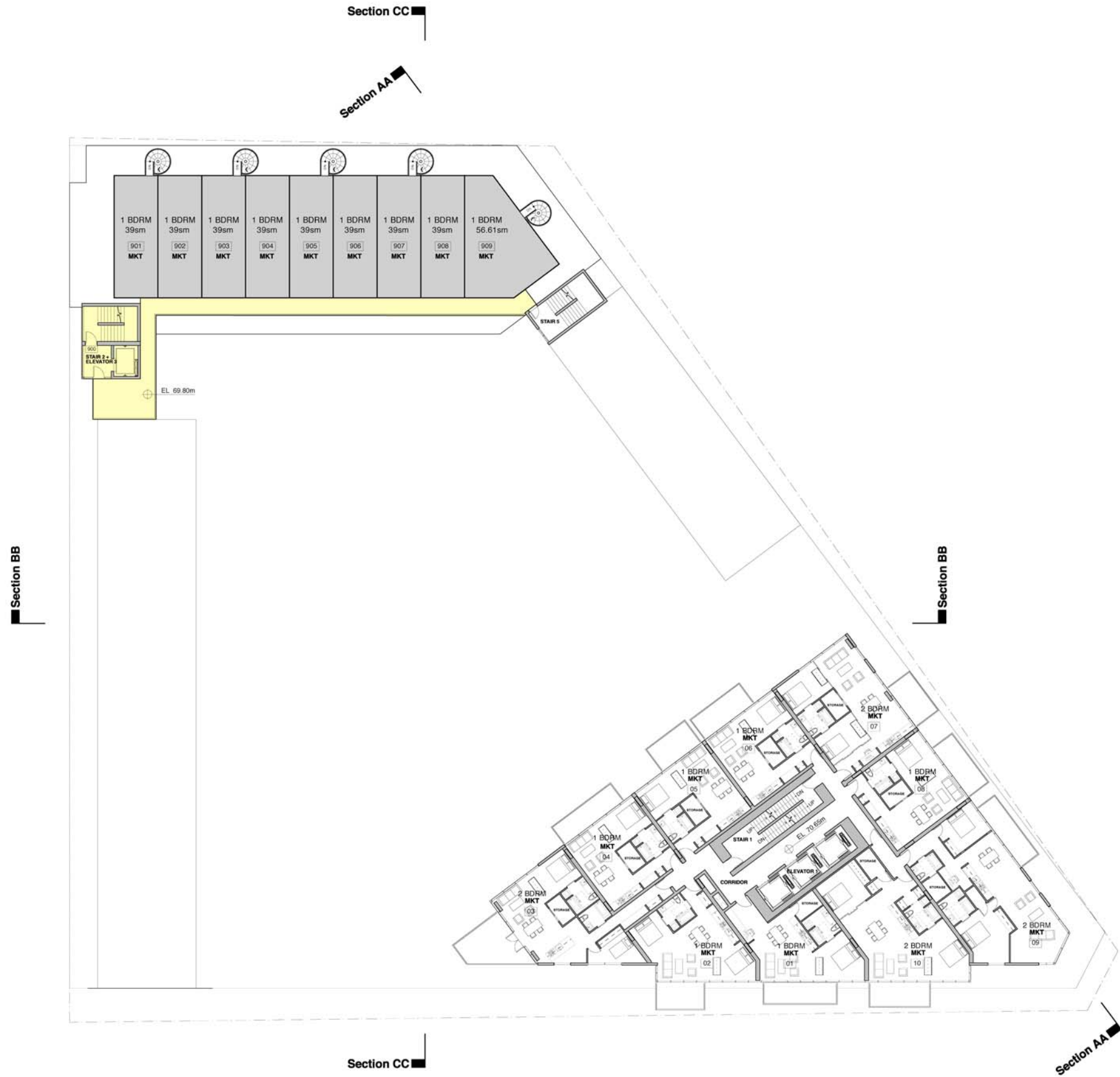
All drawings and related documents are the property of Acton Ostry Architects Inc. and may not be reproduced in whole or in part without the Architect's permission. This drawing should not be used to calculate areas. Do not scale this drawing. All dimensions to be checked on site by the contractor and such dimensions to be their responsibility. All work must comply with the relevant Building Code or Building Bylaw and related documents. Drawing errors and omissions must be immediately reported to the Architect.

Issues

9 Jun 10 Issued for UDP Workshop
26 Jul 10 Issued for Rezoning

Revisions

- △ 2 Jun 11 Revised Rezoning Submission
- △ 3 6 Oct 11 Revised Rezoning Submission



ACTON OSTRY ARCHITECTS INC.

111 E 8 Avenue
Vancouver BC
Canada V5T 1R8
t 604.739.3344
f 604.739.3355
info@actonostroy.ca

Kingsway + Broadway

Rize Alliance
Kingsway + Broadway

scale	date
1 : 200	6 Oct 11
project code	status
KWY	Rezoning
drawn	checked
WS	RA



Level 09

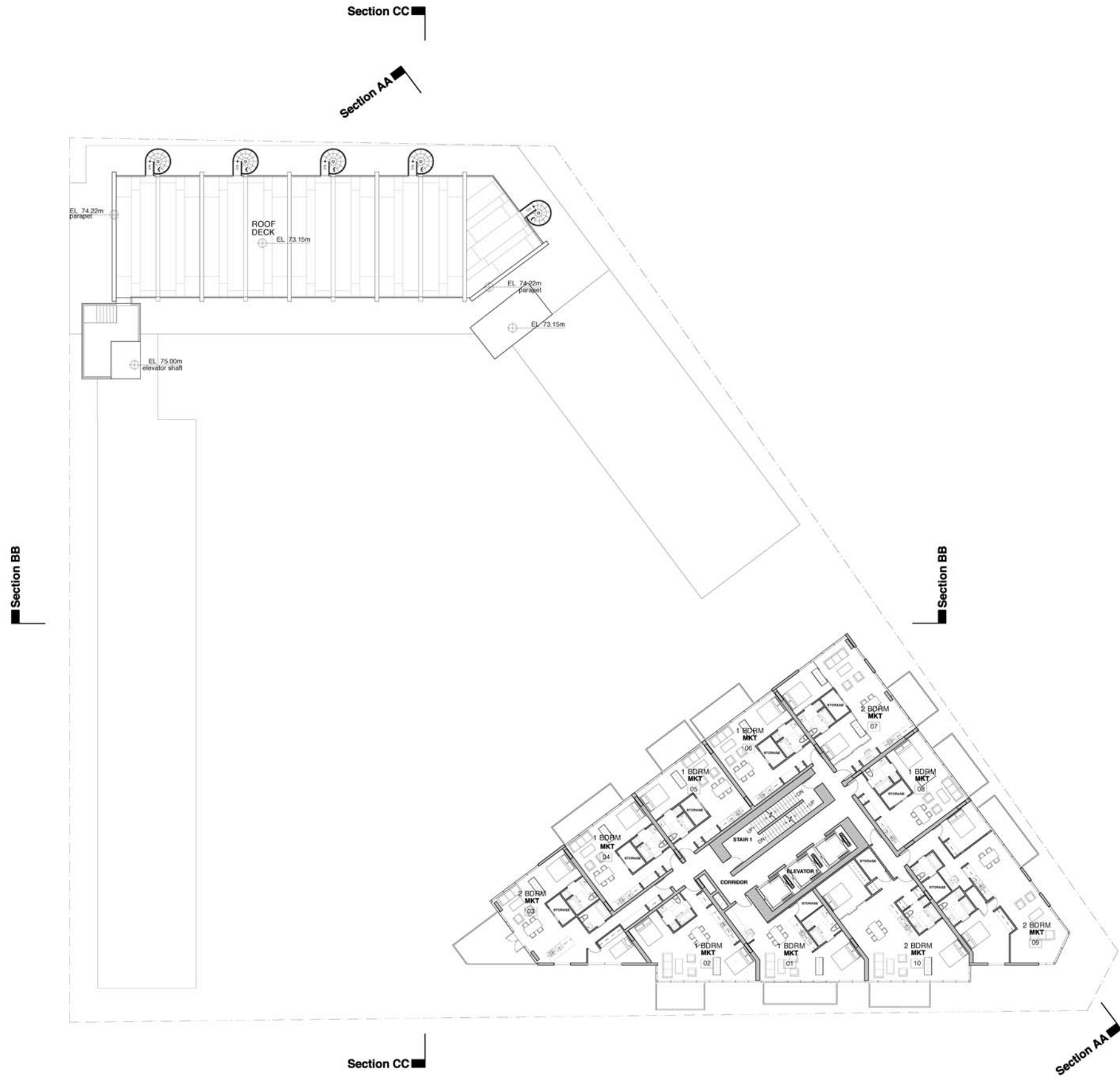
drawing number
A1.12

Issues

9 Jun 10 Issued for UDP Workshop
 26 Jul 10 Issued for Rezoning

Revisions

- △ 2 Jun 11 Revised Rezoning Submission
- △ 3 6 Oct 11 Revised Rezoning Submission



ACTON OSTRY ARCHITECTS INC.

111 E 8 Avenue
 Vancouver BC
 Canada V5T 1R8
 t 604.739.3344
 f 604.739.3355
 info@actonostroy.ca

Kingsway + Broadway

Rize Alliance
 Kingsway + Broadway

scale	date
1 : 200	6 Oct 11
project code	status
KWY	Rezoning
drawn	checked
WS	RA



Levels 10-18

drawing number
A1.13