

**issues**

9 Jun 10 Issued for UDP Workshop  
26 Jul 10 Issued for Rezoning

**revisions**

△ 2 Jun 11 Revised Rezoning Submission  
△ 6 Oct 11 Revised Rezoning Submission

**legend**

- 1 brick, varying patterns
- 2 coloured anodized aluminum glazing
- 3 glazing
- 4 coloured spandrel panel
- 5 glazed guardrail
- 6 coloured glazing
- 7 glass canopy
- 8 security grille
- 9 mechanical louvre
- 10 painted concrete

**ACTON OSTRY ARCHITECTS INC.**

111 E 8 Avenue  
Vancouver BC  
Canada V5T 1R8  
t 604.739.3344  
f 604.739.3355  
info@actonostroy.ca

**Kingsway + Broadway**

Rize Alliance  
Kingsway + Broadway

scale	date
1 : 200	6 Oct 11
project code	status
KWY	Rezoning
drawn	checked
WS	RA

**East Elevation (Kingsway)**

drawing number  
**A3.01**



**Issues**

9 Jun 10 Issued for UDP Workshop  
26 Jul 10 Issued for Rezoning

**revisions**

△ 2 Jun 11 Revised Rezoning Submission  
△ 3 6 Oct 11 Revised Rezoning Submission

**legend**

- ① brick, varying patterns
- ② coloured anodized aluminum glazing
- ③ glazing
- ④ coloured spandrel panel
- ⑤ glazed guardrail
- ⑥ coloured glazing
- ⑦ glass canopy
- ⑧ security grille
- ⑨ mechanical louvre
- ⑩ painted concrete



**ACTON OSTRY ARCHITECTS INC.**

111 E 8 Avenue  
Vancouver BC  
Canada V5T 1R8  
t 604.739.3344  
f 604.739.3355  
info@actonostroy.ca

**Kingsway + Broadway**

Rize Alliance  
Kingsway + Broadway

scale	date
1 : 200	6 Oct 11
project code	status
KWY	Rezoning
drawn	checked
WS	RA

**North Elevation (Broadway)**

drawing number  
**A3.02**



**issues**

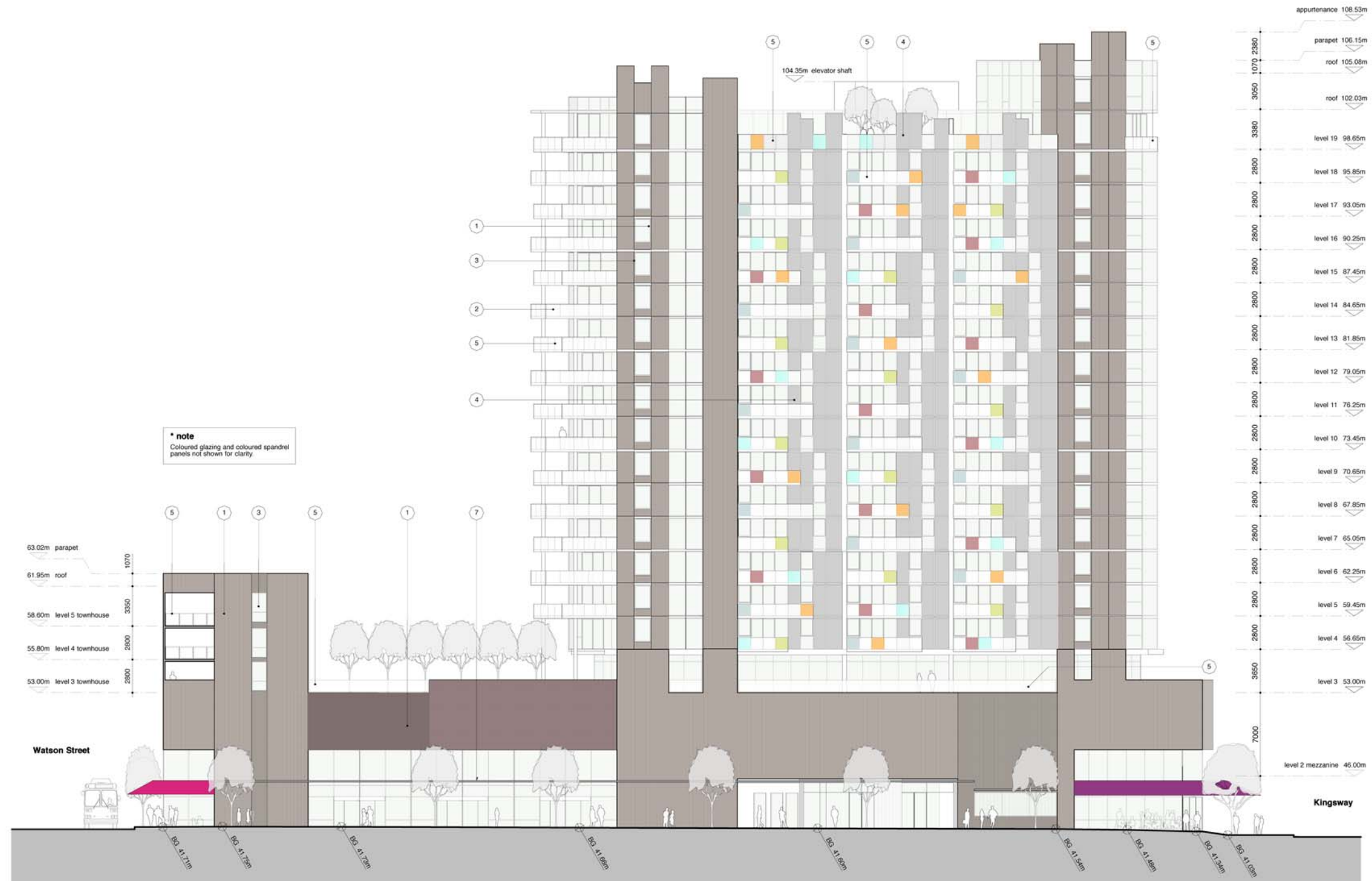
9 Jun 10 Issued for UDP Workshop  
26 Jul 10 Issued for Rezoning

**revisions**

△ 2 Jun 11 Revised Rezoning Submission  
△ 6 Oct 11 Revised Rezoning Submission

**legend**

- ① brick, varying patterns
- ② coloured anodized aluminum glazing
- ③ glazing
- ④ coloured spandrel panel
- ⑤ glazed guardrail
- ⑥ coloured glazing
- ⑦ glass canopy
- ⑧ security grille
- ⑨ mechanical louvre
- ⑩ painted concrete



**ACTON OSTRY ARCHITECTS INC.**

111 E 8 Avenue  
Vancouver BC  
Canada V5T 1R8  
t 604.739.3344  
f 604.739.3355  
info@actonostroy.ca

**Kingsway + Broadway**

Rize Alliance  
Kingsway + Broadway

scale	date
1 : 200	6 Oct 11
project code	status
KWY	Rezoning
drawn	checked
WS	RA

**South Elevation (10th Avenue)**

drawing number  
**A3.04**

**issues**

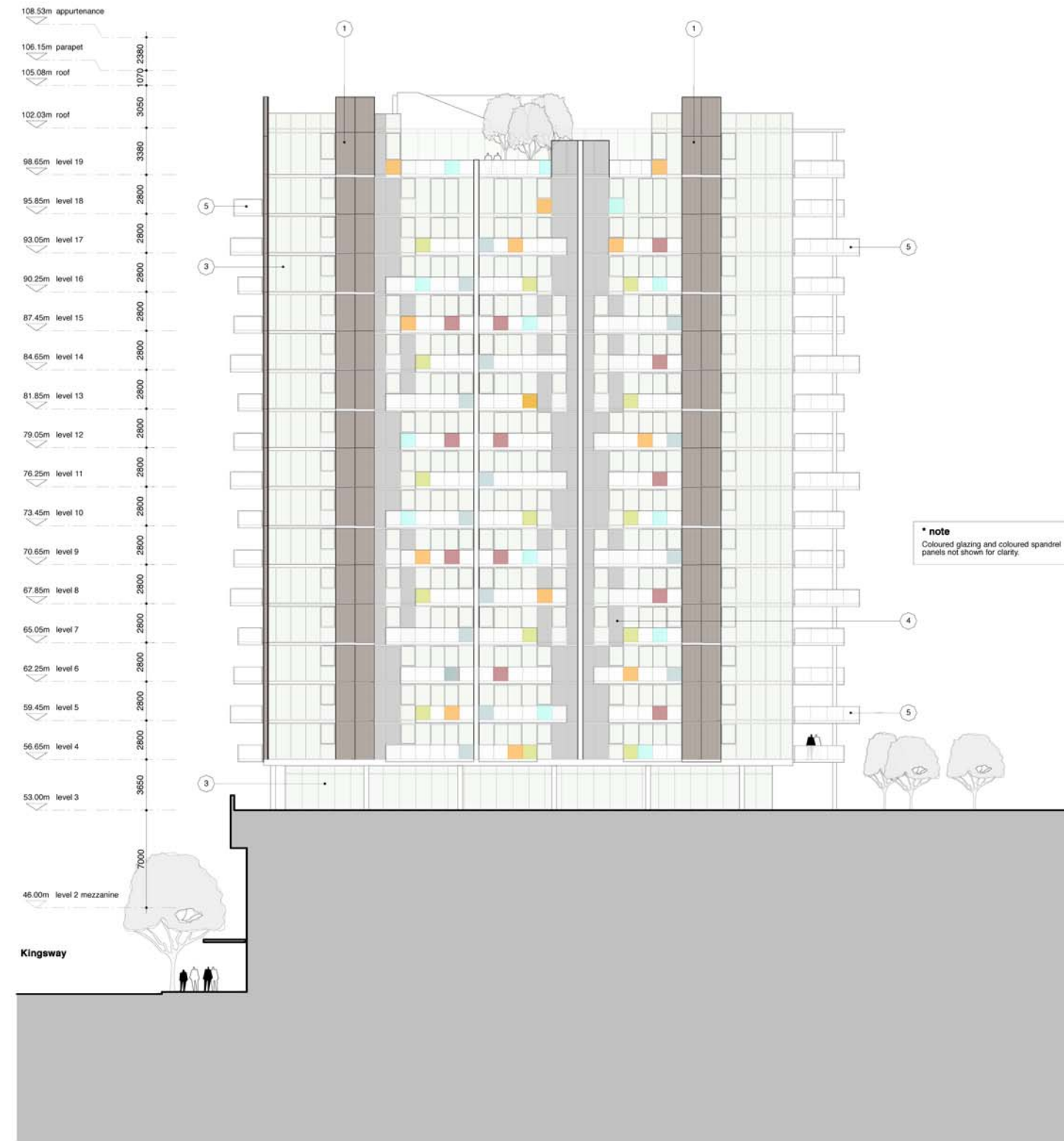
9 Jun 10 Issued for UDP Workshop  
26 Jul 10 Issued for Rezoning

**revisions**

△ 2 Jun 11 Revised Rezoning Submission  
△ 3 6 Oct 11 Revised Rezoning Submission

**legend**

- ① brick; varying patterns
- ② coloured anodized aluminum glazing
- ③ glazing
- ④ coloured spandrel panel
- ⑤ glazed guardrail
- ⑥ coloured glazing
- ⑦ glass canopy
- ⑧ security grille
- ⑨ mechanical louvre
- ⑩ painted concrete



**ACTON OSTRY ARCHITECTS INC.**

111 E 8 Avenue  
Vancouver BC  
Canada V5T 1R8  
t 604.739.3344  
f 604.739.3355  
info@actonostroy.ca

**Kingsway +  
Broadway**

Rize Alliance  
Kingsway + Broadway

scale	date
1 : 200	6 Oct 11
project code	status
KWY	Rezoning
drawn	checked
WS	RA

**North Elevation -  
Tower**

drawing number  
**A3.05**