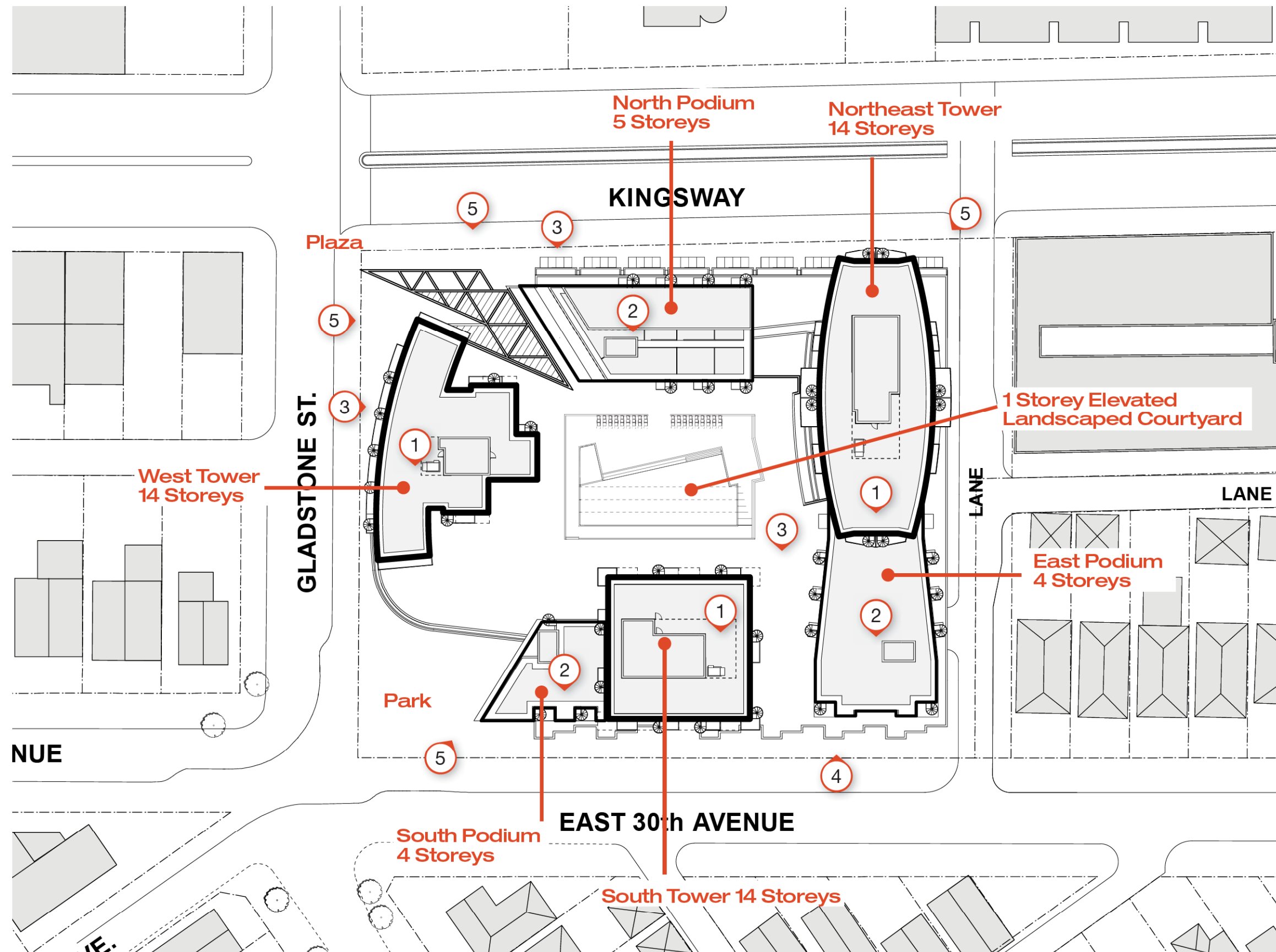


3.2 BUILDING PROGRAM



- 1 Residential towers**

The site is spread over three 14-storey residential towers, each with a different shape and identity.
- 2 Residential streetwall**

A set back residential podium provides streetwall definition on both Kingsway and East 30th Avenue.
- 3 Retail/Commercial**

A one-storey retail podium, which includes a food store fronting onto Kingsway, unites the residential buildings with the towers above.
- 4 Townhouses**

A row of townhouses acknowledges the residential scale of the family dwellings along East 30th Avenue.
- 5 Setbacks**

The buildings are sculpted to accommodate appropriate open spaces and public amenities, which include a new park, lane, plaza, and expanded sidewalks.