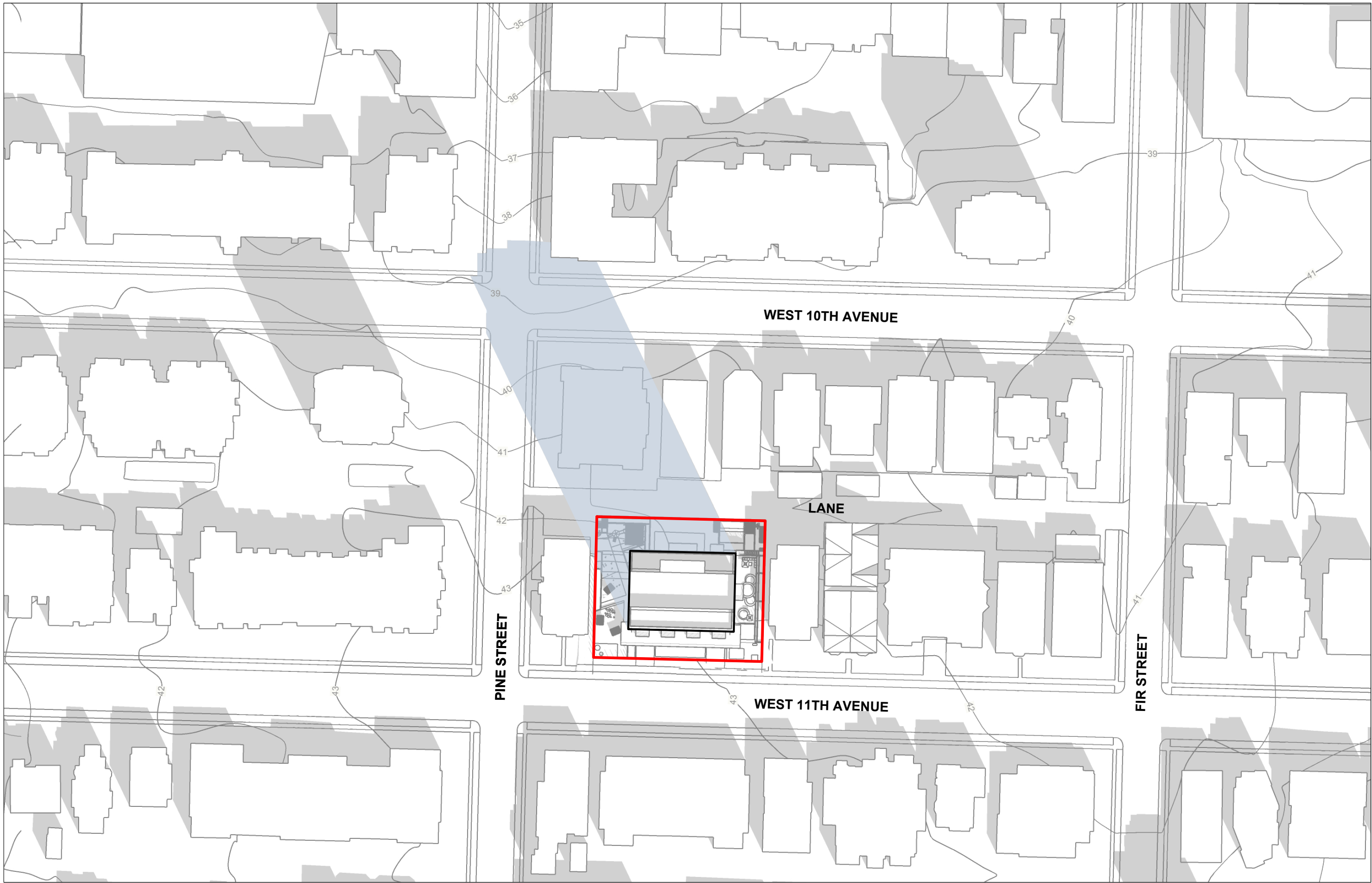
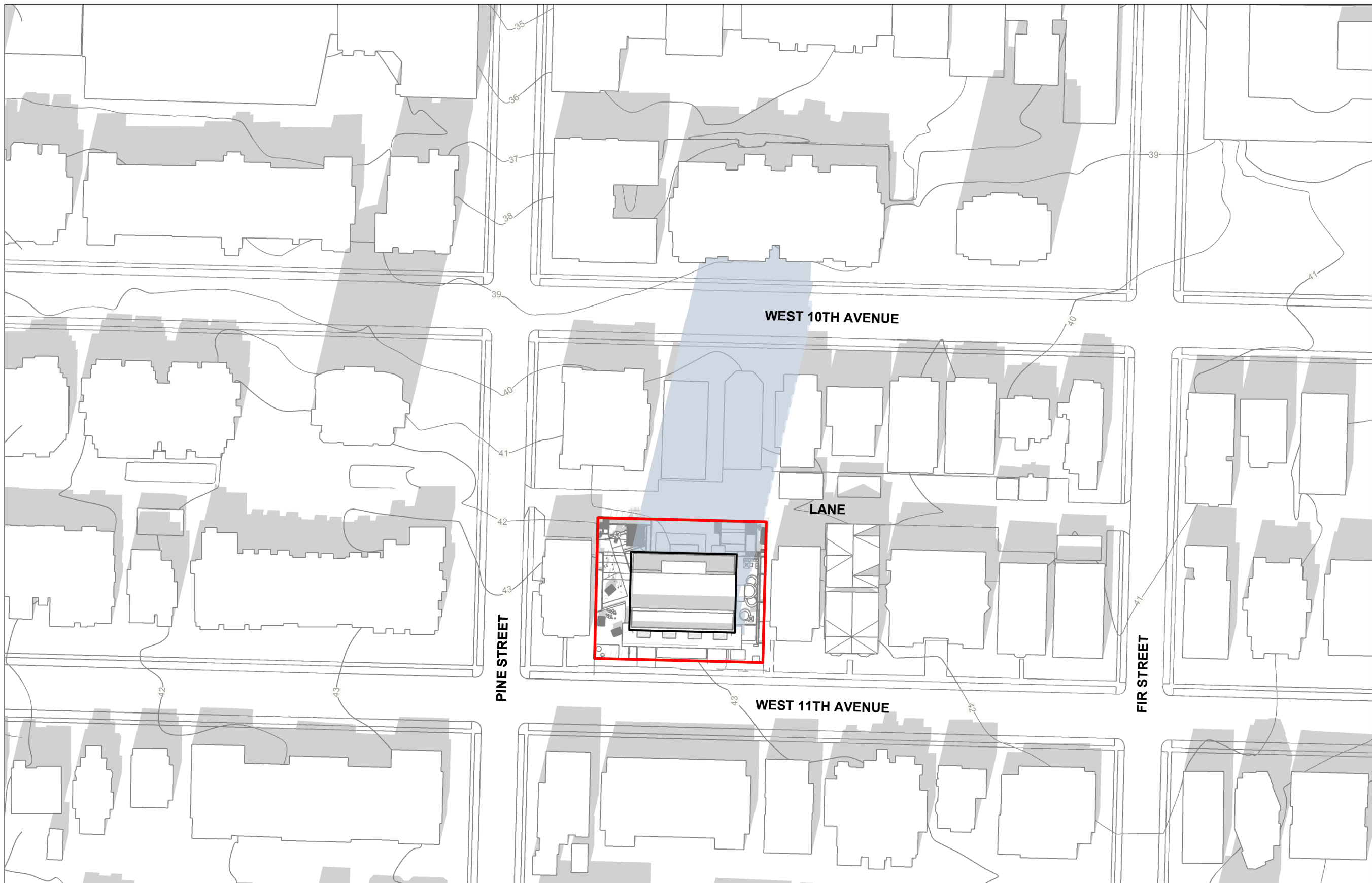


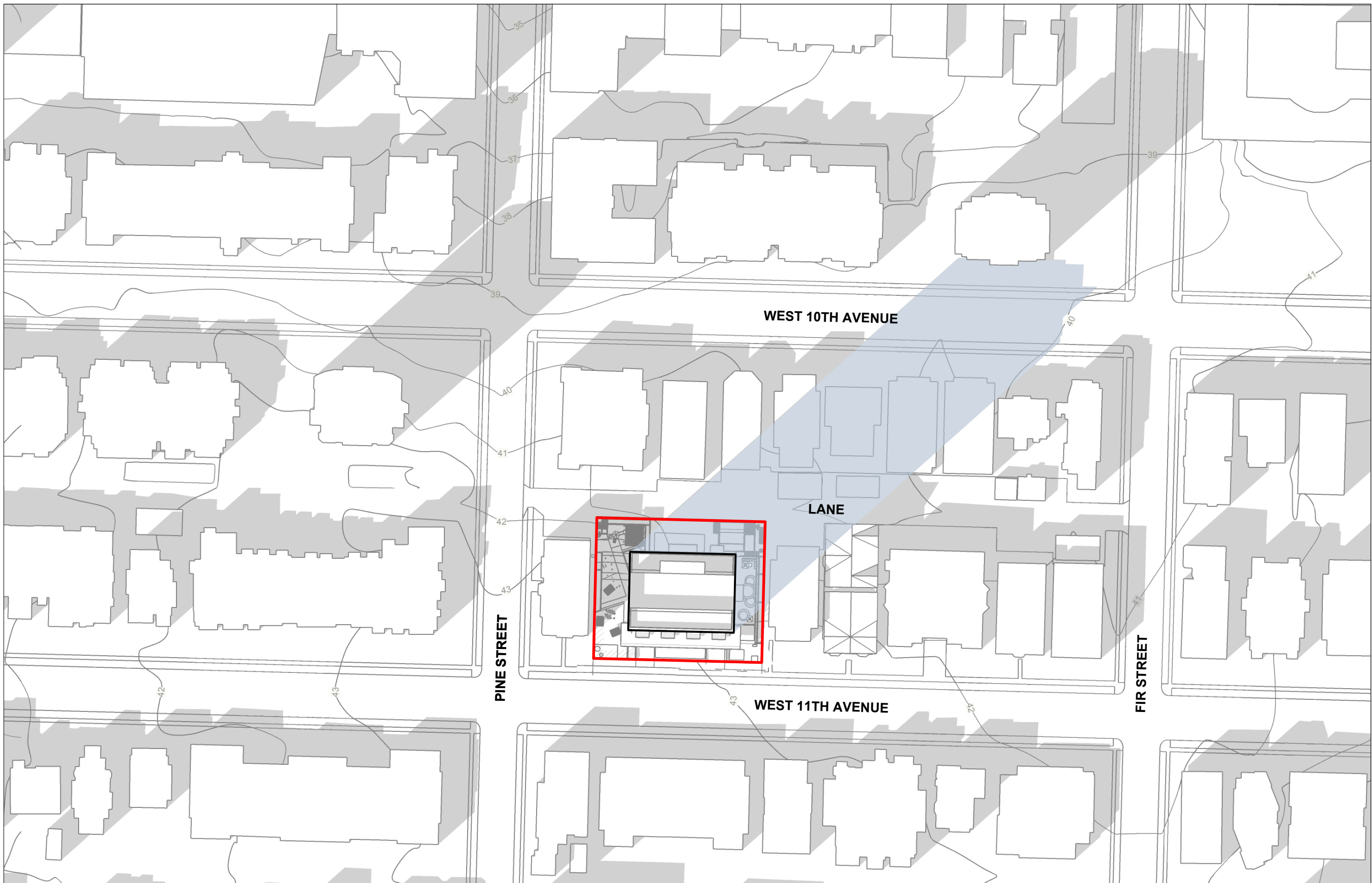
1 March 21 - 10am (UTC-7) site proposed development shadow



2 March 21 - 12pm (UTC-7) site proposed development shadow



3 March 21 - 2pm (UTC-7) site proposed development shadow



4 March 21 - 4pm (UTC-7) site proposed development shadow

All drawings and related documents are the property of Acton Ostry Architects Inc. and may not be reproduced in whole or in part without the Architect's permission. This drawing should not be used to calculate areas. Do not scale this drawing. All dimensions to be checked on site by the contractor and such dimensions to be their responsibility. All work must comply with the relevant Building Code or Building Bylaw and related documents. Drawing errors and omissions must be immediately reported to the Architect.

13 Dec 2023 Issued for Rezoning  
13 May 2024 Issued for Revised Rezoning

GENERAL NOTES:  
The digital model used to produce these shadow study diagrams was created using SketchUp Pro. The site was located using SketchUp's geo-location tool. Site topography was based on the survey dated July 18 2022 by Lyon & Phillips BC Land Surveyors and aligned in the model with surrounding topographic and building footprint information obtained from the City of Vancouver's VanMap Viewer and Open Data Portal. Context buildings were generally imported from a city-scale digital model obtained from Turbo Squid, a third-party digital media company. Shadows illustrated were derived using SketchUp's shadow settings tool.

NOT FOR  
CONSTRUCTION

ACTON OSTRY  
ARCHITECTS INC.

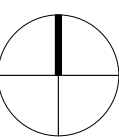
111 E 8 Avenue  
Vancouver BC  
Canada V5T 1P8  
t 604.735.3024  
f 604.735.3555  
info@actonostry.ca



## Pine & W 11th

Palmar Properties Inc.  
1685, 1675, 1665 W 11th Ave,  
Vancouver, BC

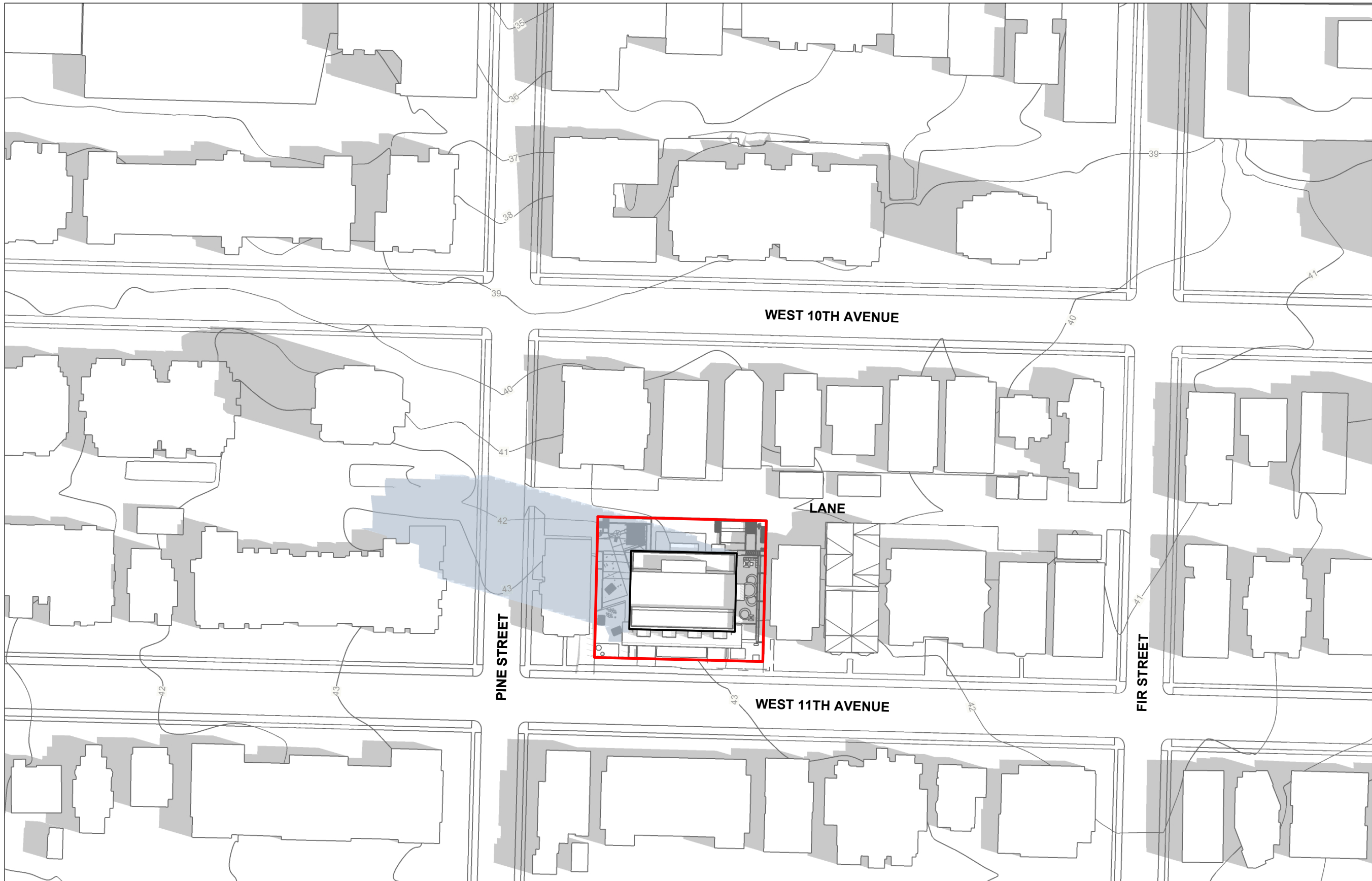
scale	date
1:350	13 May 2024
project code	status
PW11	Rezoning
drawn	checked
CH/MF	DF/MO



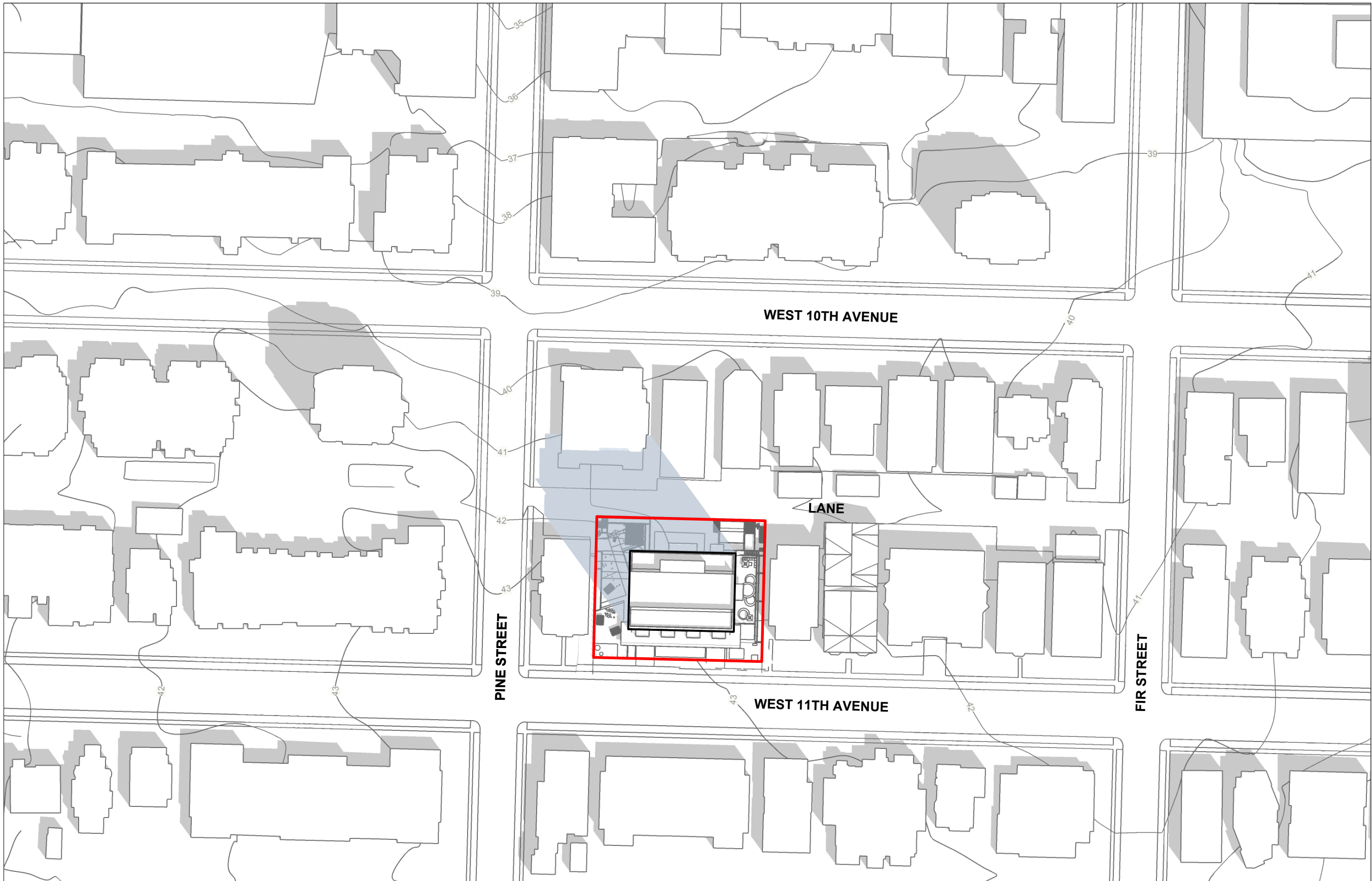
## Shadow Analysis March 21st

drawing number  
A013

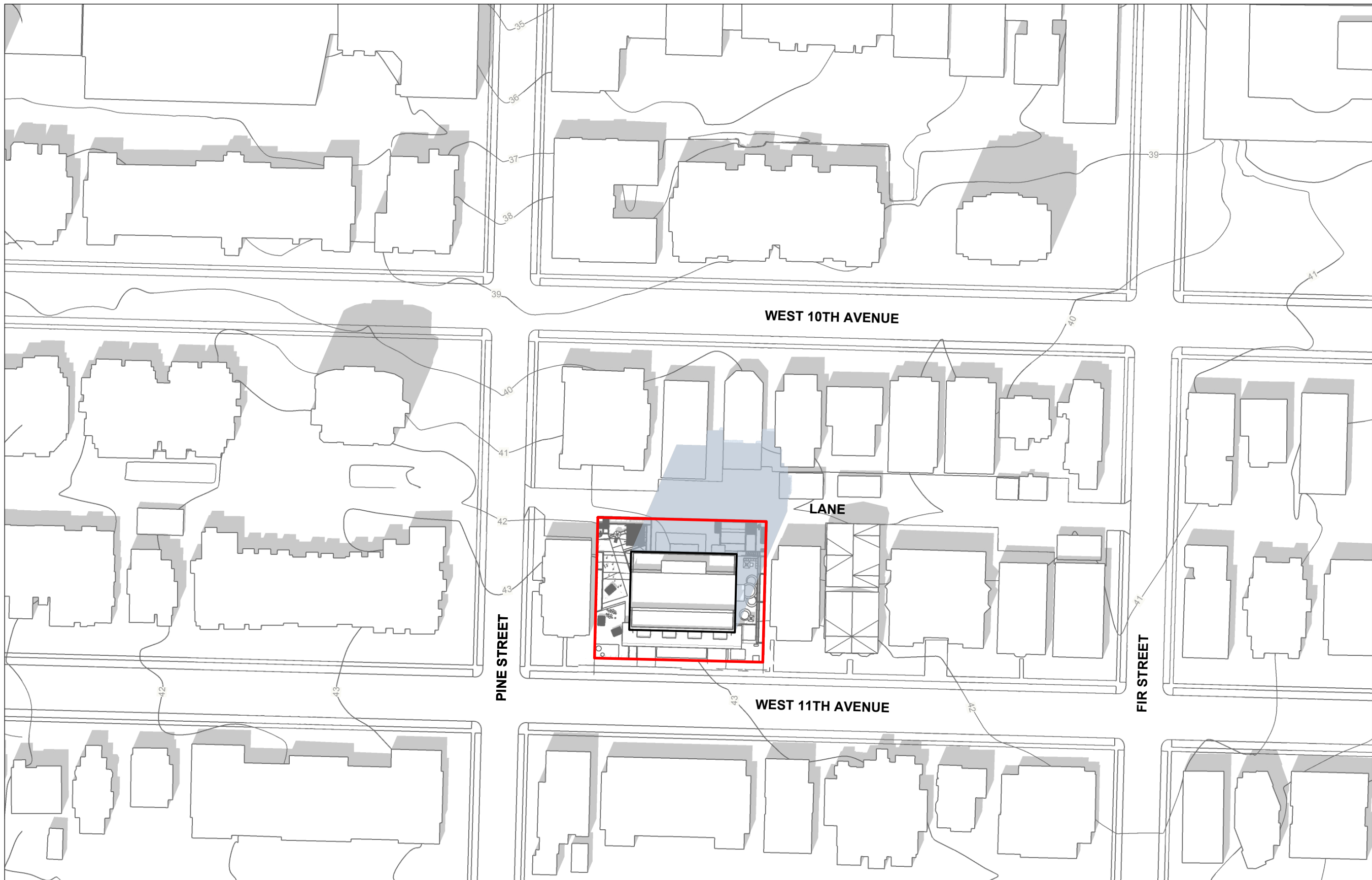




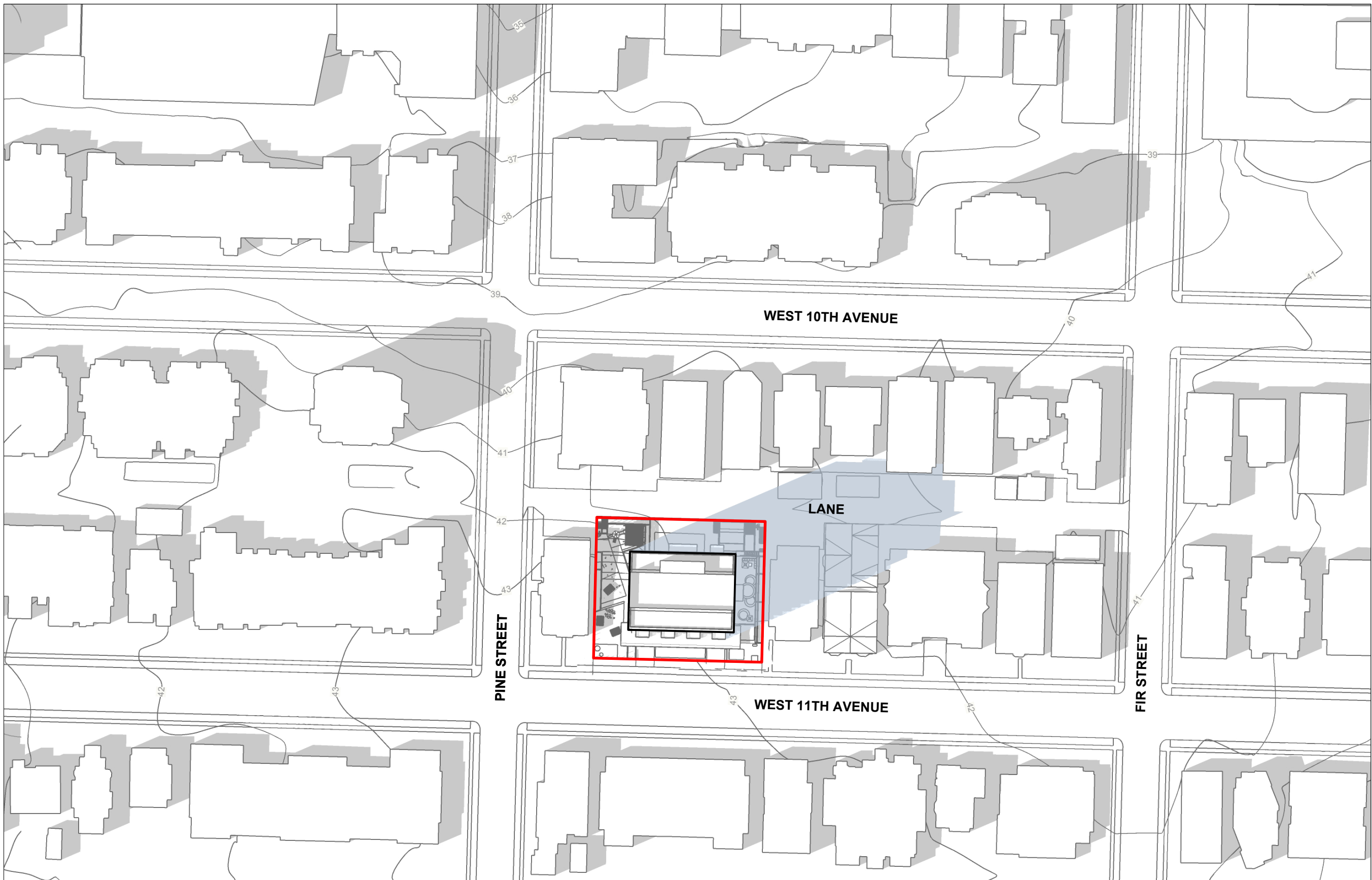
1 June 21 - 10am (UTC-7) site proposed development shadow



2 June 21 - 12pm (UTC-7) site proposed development shadow



3 June 21 - 2pm (UTC-7) site proposed development shadow



4 June 21 - 4pm (UTC-7) site proposed development shadow

All drawings and related documents are the property of Acton Ostry Architects Inc. and may not be reproduced in whole or in part without the Architect's permission. This drawing should not be used to calculate areas. Do not scale this drawing. All dimensions to be checked on site by the contractor and such dimensions to be their responsibility. All work must comply with the relevant Building Code or Building Bylaw and related documents. Drawing errors and omissions must be immediately reported to the Architect.

Issues	
13 Dec 2023	Issued for Rezoning
13 May 2024	Issued for Revised Rezoning

GENERAL NOTES:

The digital model used to produce these shadow study diagrams was created using SketchUp Pro. The site was located using SketchUp's geo-location tool. Site topography was based on the survey dated July 18 2022 by Lyon & Phillips BC Land Surveyors and aligned in the model with surrounding topographic and building footprint information obtained from the City of Vancouver's VanMap Viewer and Open Data Portal. Context buildings were generally imported from a city-scale digital model obtained from Turbo Squid, a third-party digital media company. Shadows illustrated were derived using SketchUp's shadow settings tool.

NOT FOR  
CONSTRUCTION

ACTON OSTRY  
ARCHITECTS INC.

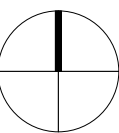
111 E 8 Avenue  
Vancouver BC  
Canada V5T 1P8  
t 604.735.3024  
f 604.735.3555  
info@actonostry.ca



## Pine & W 11th

Palmar Properties Inc.  
1685, 1675, 1665 W 11th Ave,  
Vancouver, BC

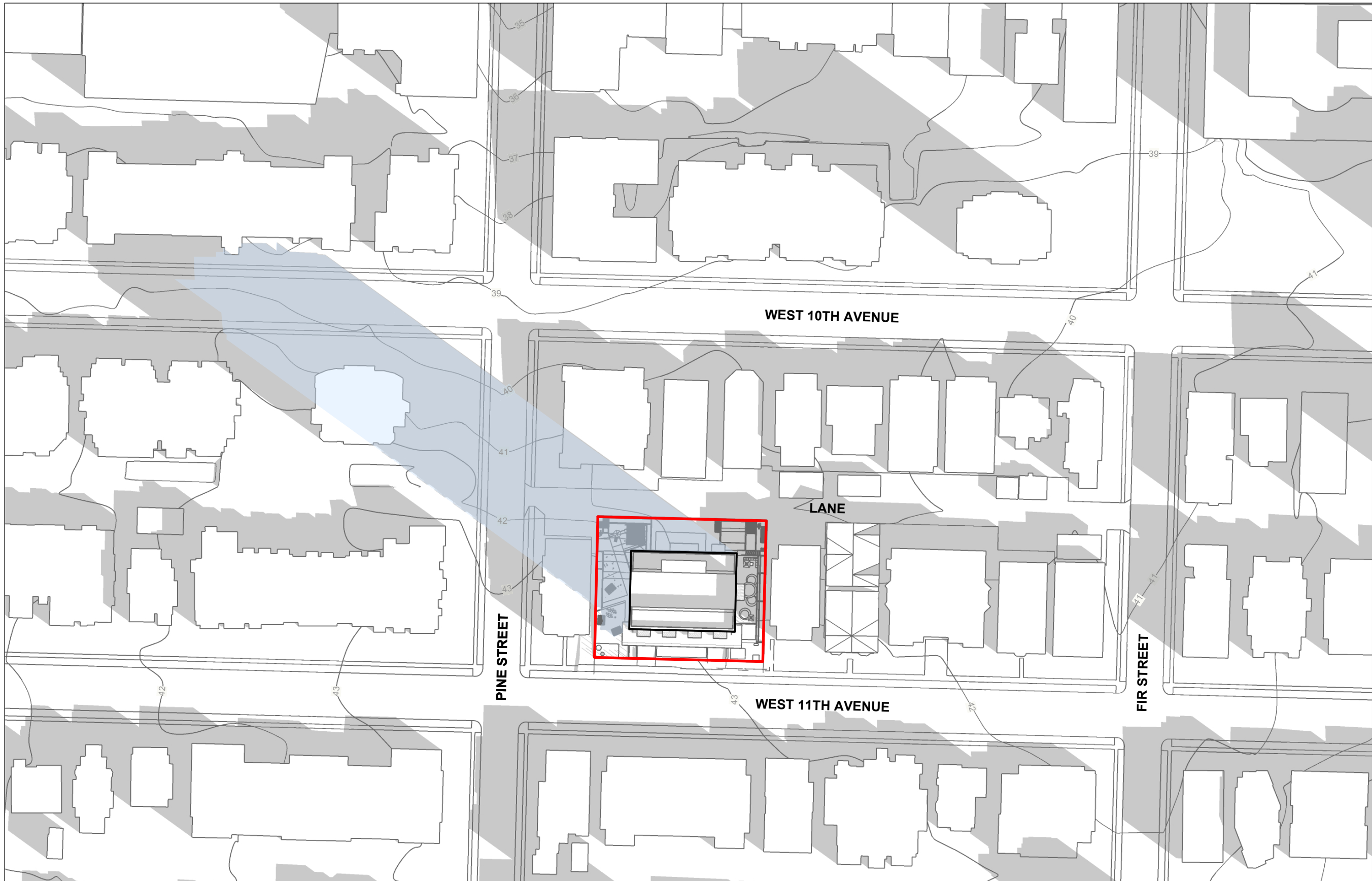
scale	date
1:350	13 May 2024
project code	status
PW11	Rezoning
drawn	checked
CH/MF	DF/MO



## Shadow Analysis June 21st

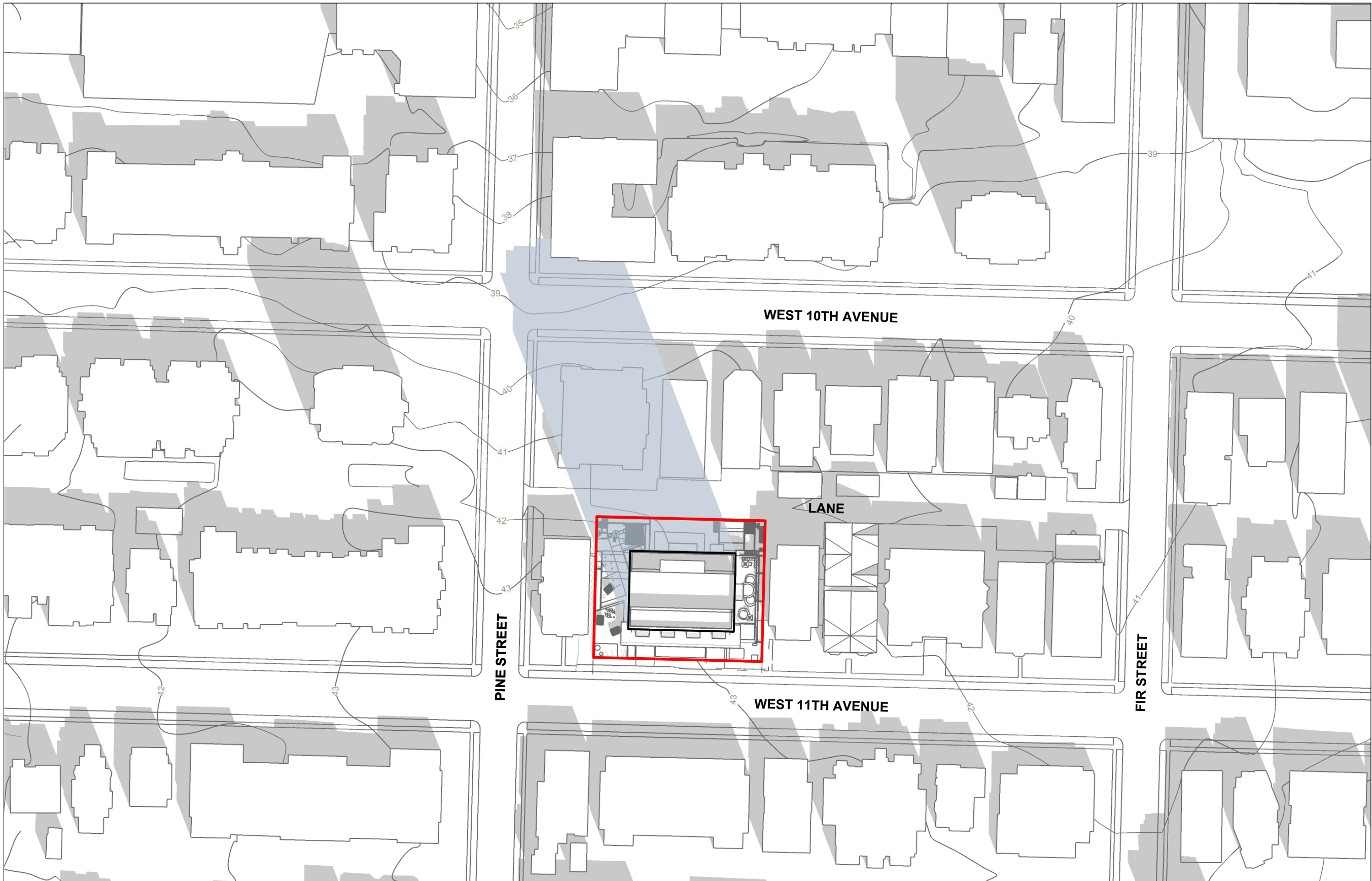
drawing number  
A014





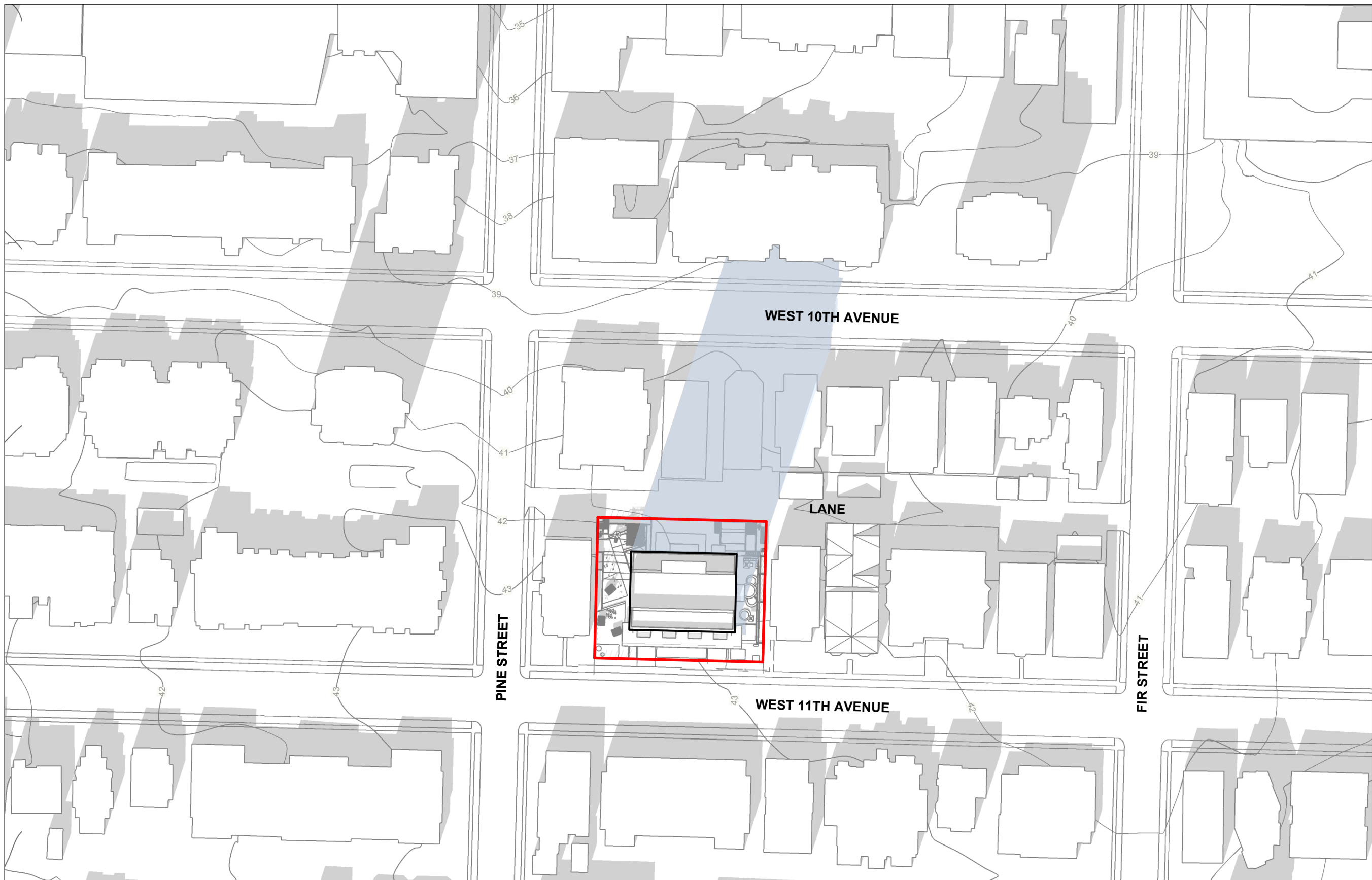
1 September 22 - 10am (UTC-7)

site proposed development shadow



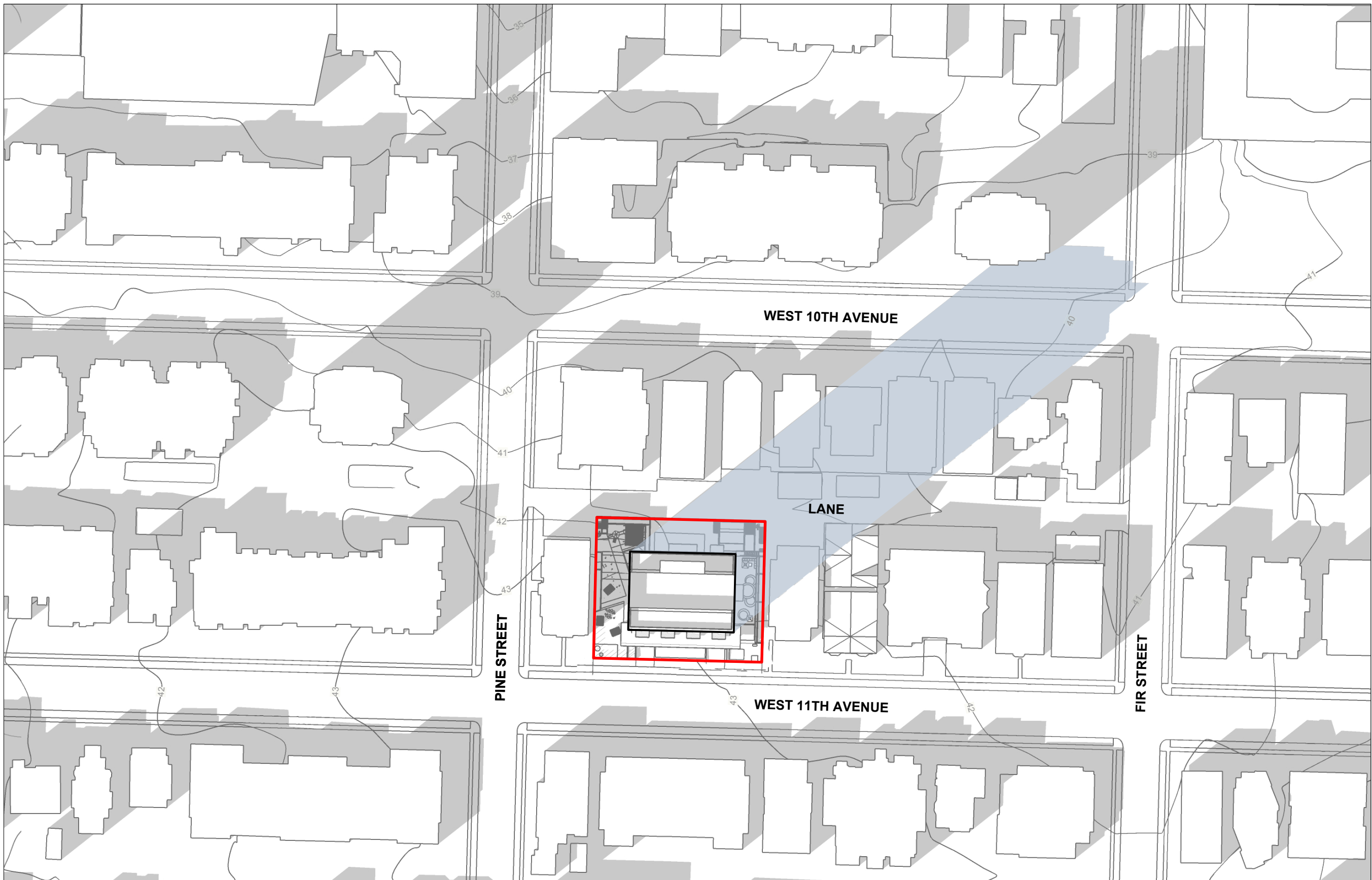
2 September 22 - 12pm (UTC-7)

site proposed development shadow



3 September 22 - 2pm (UTC-7)

site proposed development shadow



4 September 22 - 4pm (UTC-7)

site proposed development shadow

All drawings and related documents are the property of Acton Ostry Architects Inc. and may not be reproduced in whole or in part without the Architect's permission. This drawing should not be used to calculate areas. Do not scale this drawing. All dimensions to be checked on site by the contractor and such dimensions to be their responsibility. All work must comply with the relevant Building Code or Building Bylaw and related documents. Drawing errors and omissions must be immediately reported to the Architect.

Issues	
13 Dec 2023	Issued for Rezoning
13 May 2024	Issued for Revised Rezoning

GENERAL NOTES:

The digital model used to produce these shadow study diagrams was created using SketchUp Pro. The site was located using SketchUp's geo-location tool. Site topography was based on the survey dated July 18 2022 by Lyon & Phillips BC Land Surveyors and aligned in the model with surrounding topographic and building footprint information obtained from the City of Vancouver's VanMap Viewer and Open Data Portal. Context buildings were generally imported from a city-scale digital model obtained from Turbo Squid, a third-party digital media company. Shadows illustrated were derived using SketchUp's shadow settings tool.

NOT FOR  
CONSTRUCTION

ACTON OSTRY  
ARCHITECTS INC.

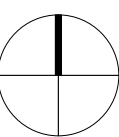
111 E 8 Avenue  
Vancouver BC  
Canada V5T 1P8  
t 604.735.3024  
f 604.735.3555  
info@actonostry.ca



## Pine & W 11th

Palmar Properties Inc.  
1685, 1675, 1665 W 11th Ave,  
Vancouver, BC

scale	date
1:350	13 May 2024
project code	status
PW11	Rezoning
drawn	checked
CH/MF	DF/MO



## Shadow Analysis September 22nd

drawing number  
A015