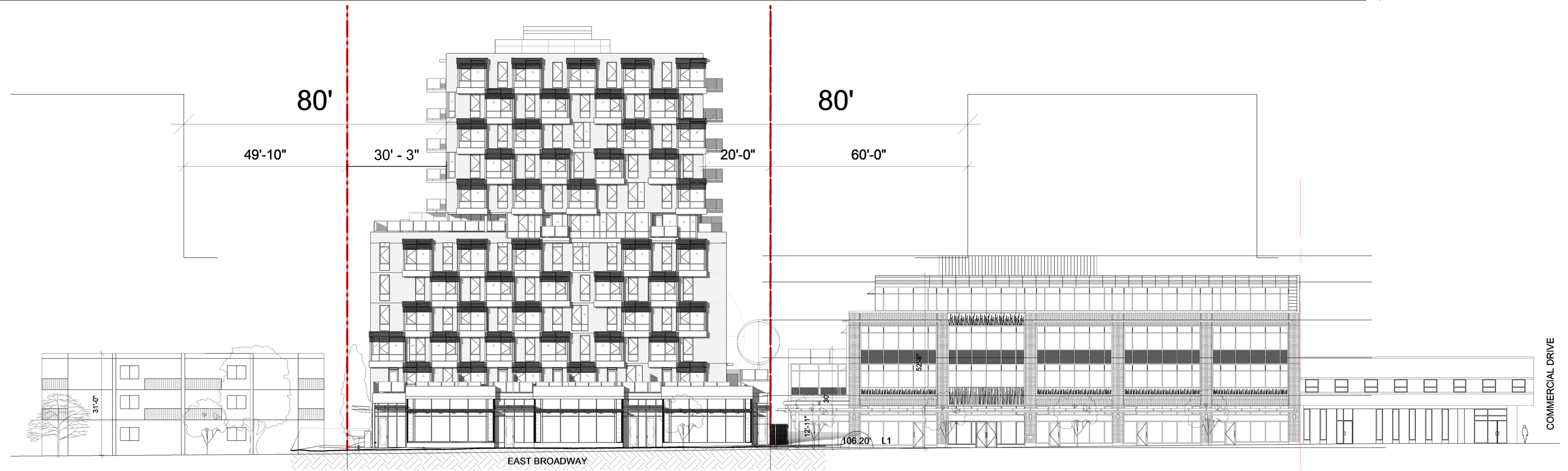


STREETSCAPES

NORTH SIDE OF EAST BROADWAY
(PROPOSED)
1'-0" = 1/16"



SOUTH SIDE OF EAST BROADWAY
(EXISTING)
1'-0" = 1/16"



EXISTING NORTH SIDE OF EAST BROADWAY



EXISTING SOUTH SIDE OF EAST BROADWAY