

# Landscape Plan

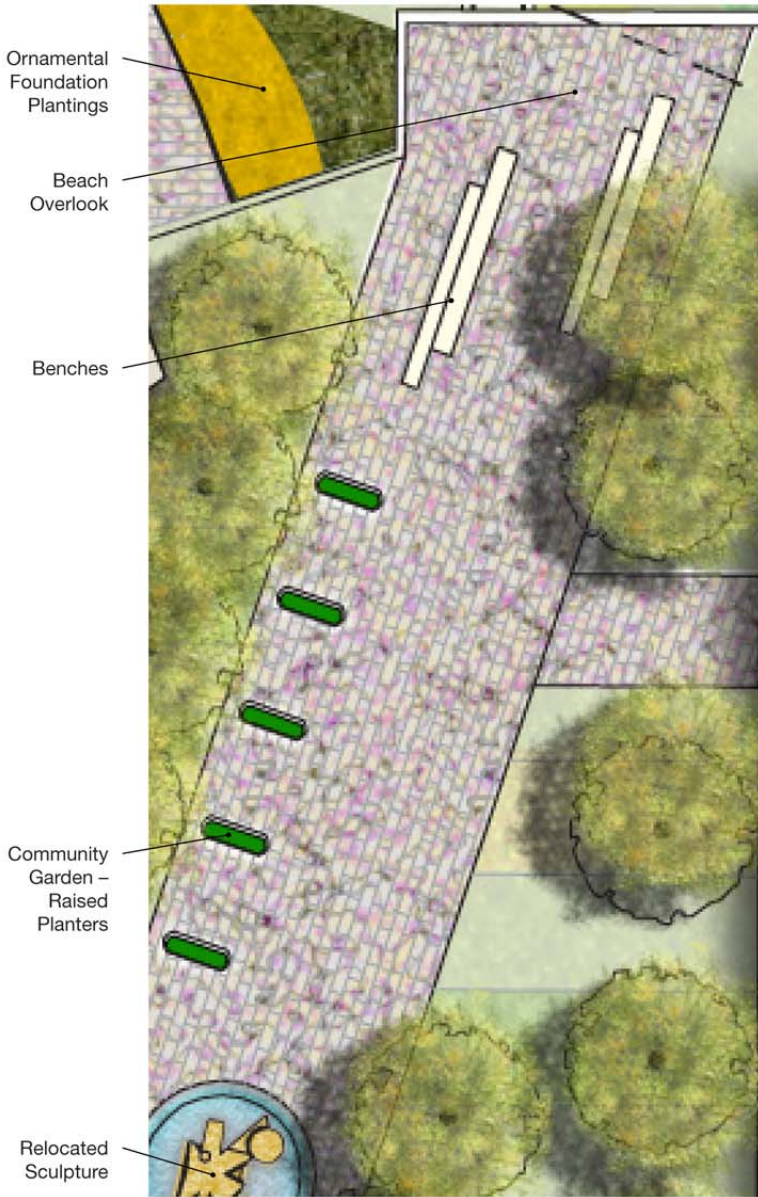


SEPTEMBER 21ST SCHEME

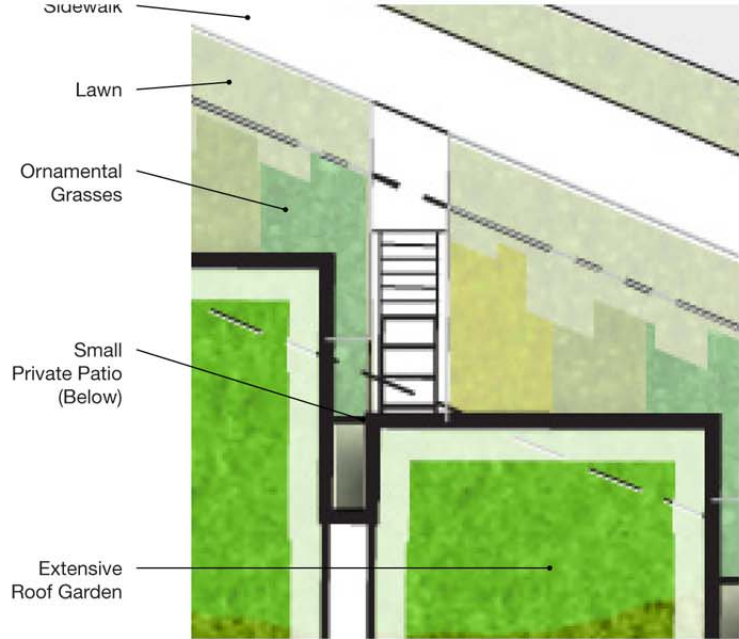
The landscape concept works to respect the existing and well enjoyed plantings types in the west end. The concept also importantly introduces a comprehensive renewal of the paved and planted areas of the site. Special attention is given towards the ocean views across the site celebrated in the special paving and planting on axis with the prominent views. The proposal includes new community gardens, a childrens play area, coffee / chess tables, 'driftwood' benches, inclusion of two large metal sculptures, and seating along beach avenue in the public realm



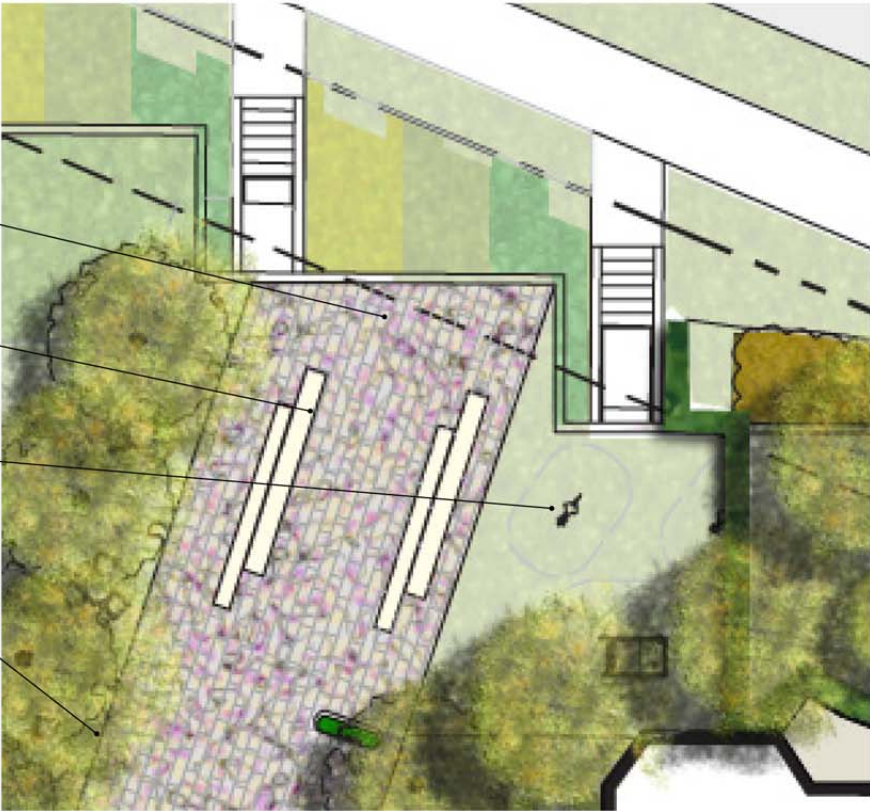
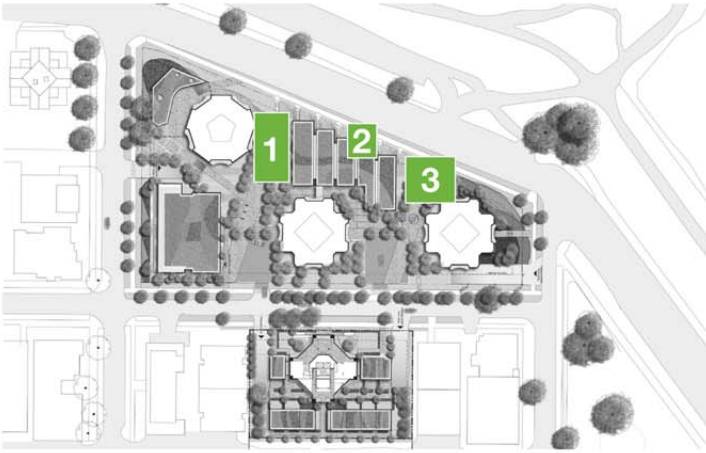
# Landscape Plan



1 Overlook / Community Garden



2 Beach Ave. Townhomes



3 Children's Play Area / Community Garden



Grove Character



Inspiration



Public Seating



Ample Seating



Community Garden



Children's Play Area



Chance Encounter



IBI/HB Architects  
 700 - 1285 West Pender Street  
 Vancouver BC V6E 4B1 Canada  
 tel 604 683 8797  
 fax 604 683 0492

Beach Towers Rezoning Application - Rezoning Application  
 1600 Beach Avenue & 1651 Harwood Street, Vancouver BC  
 May 17th 2012