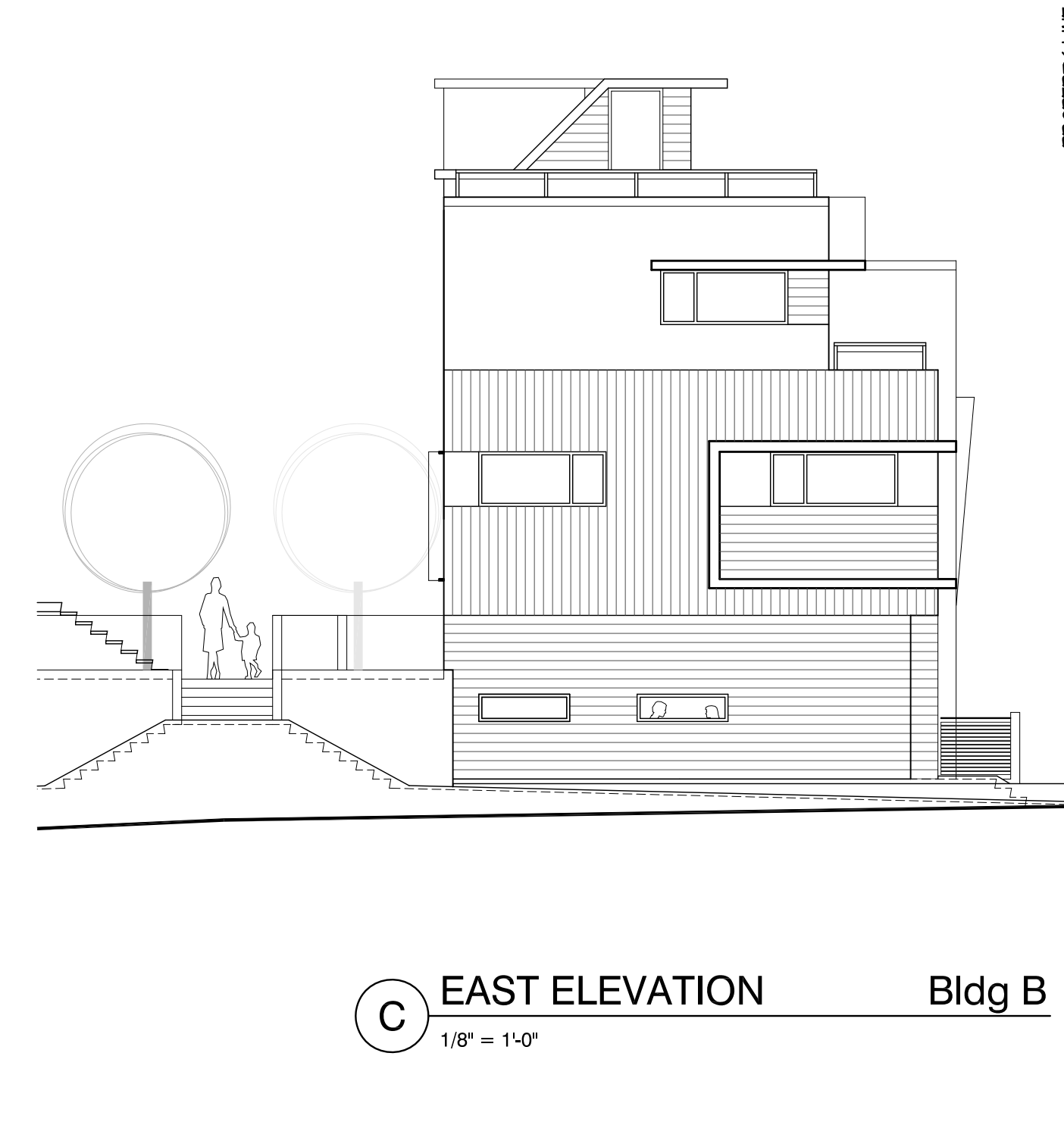
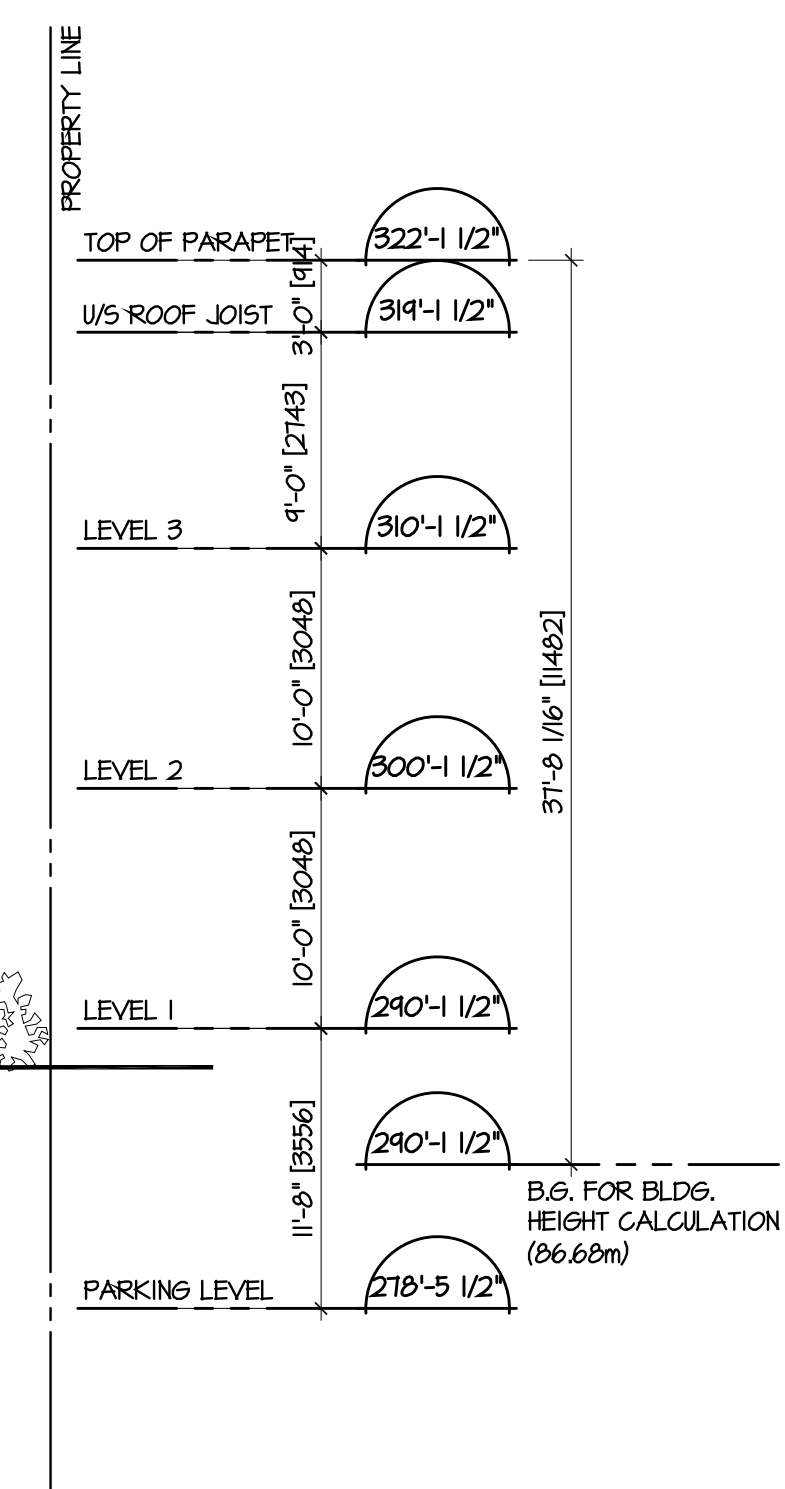
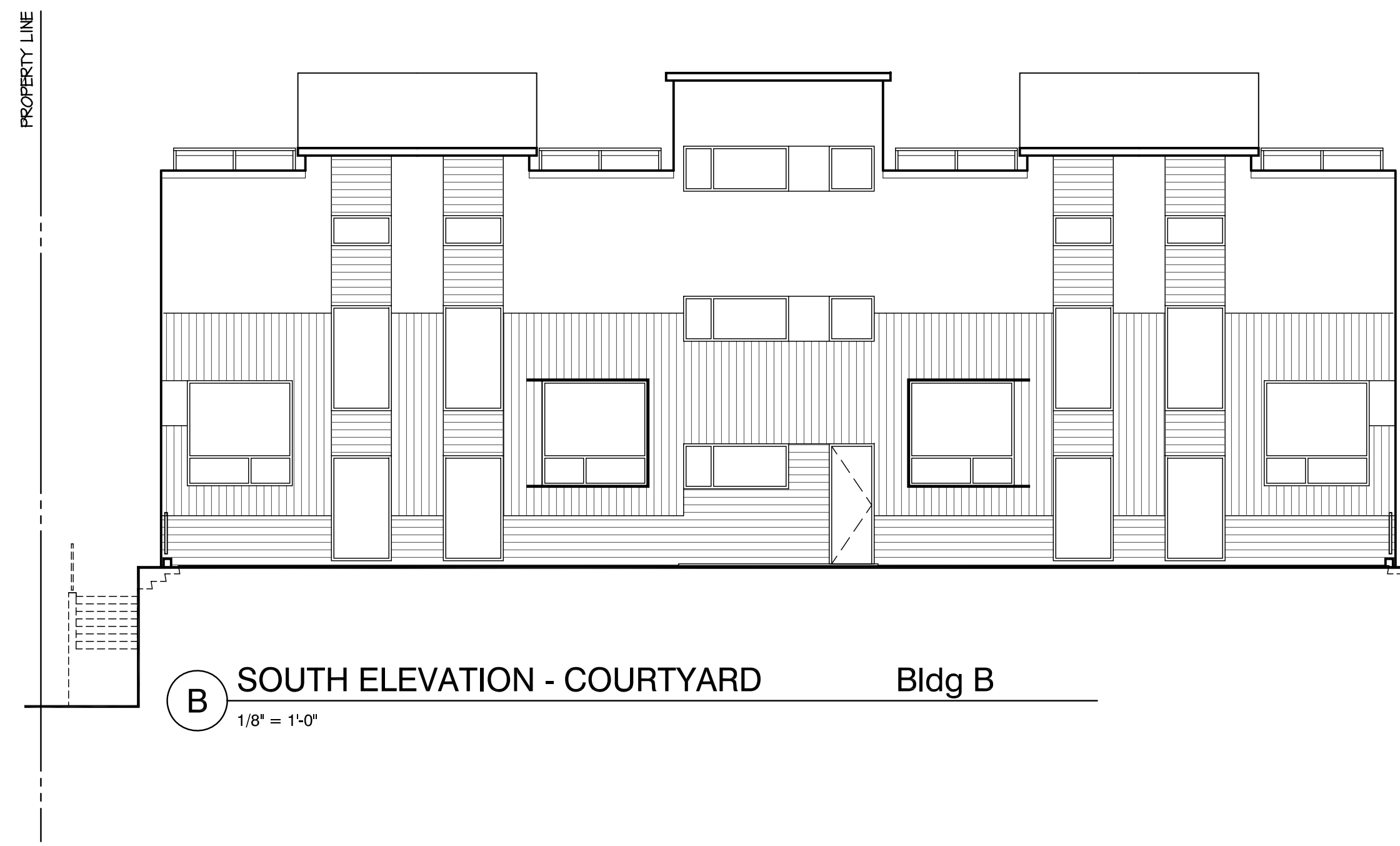
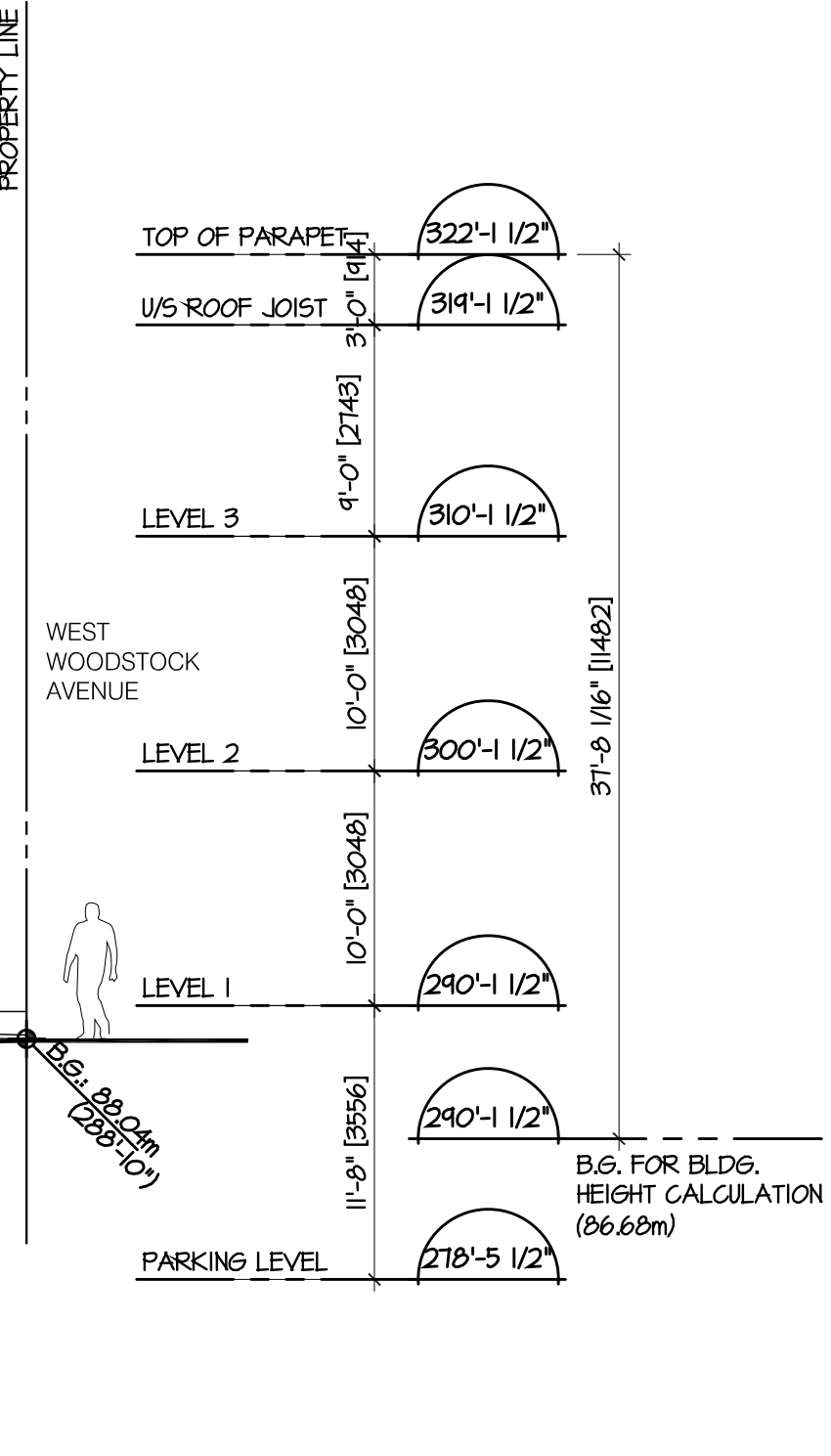


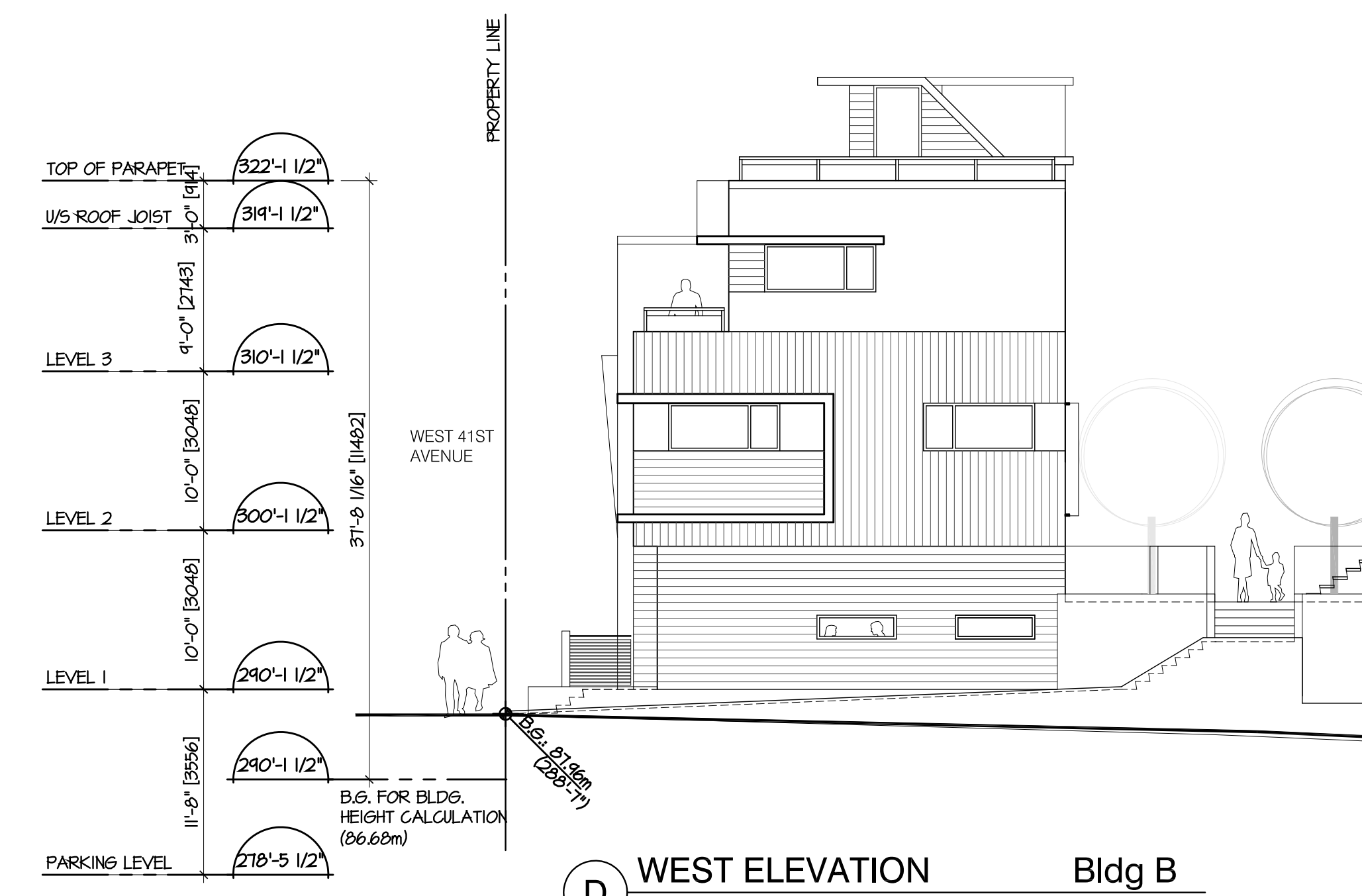
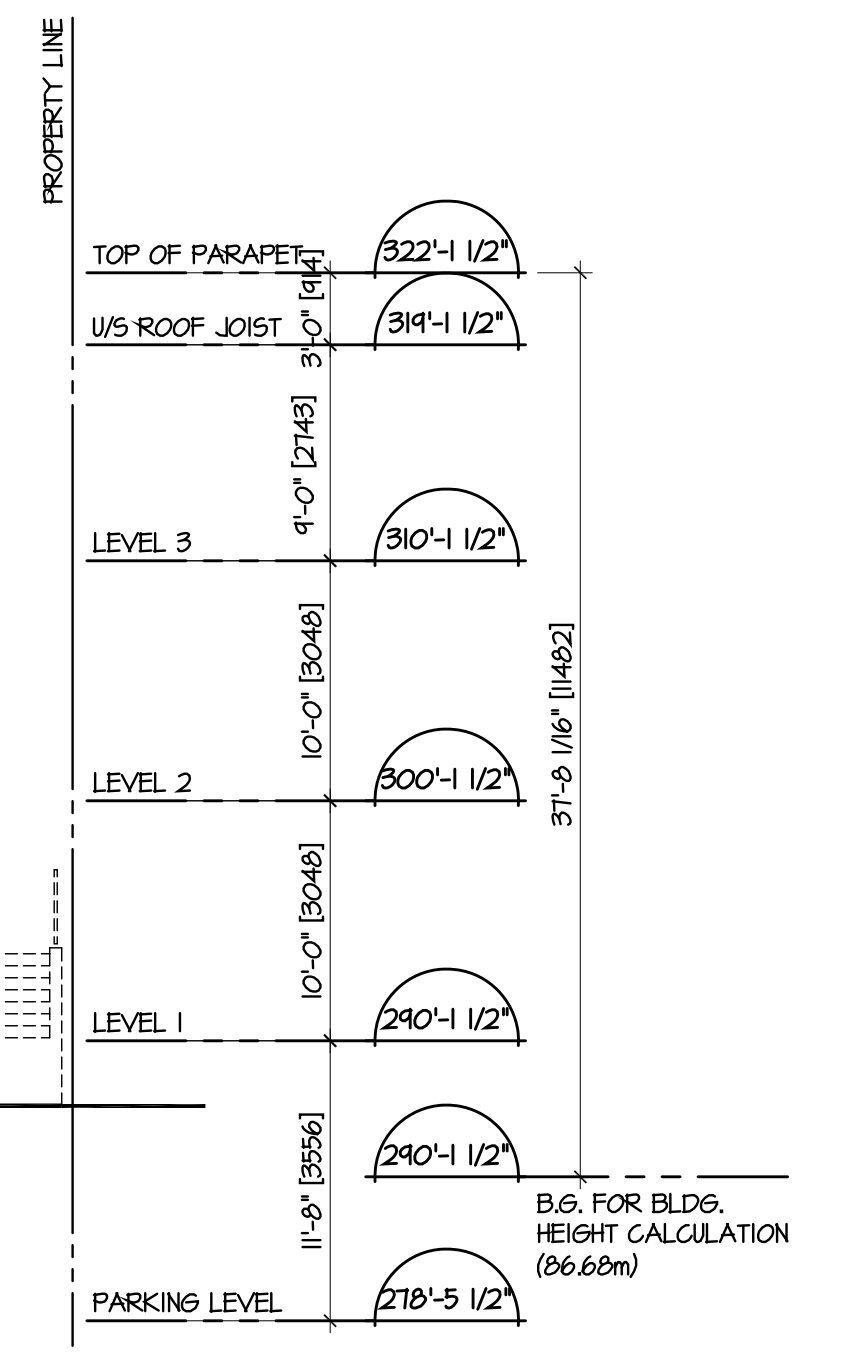
A NORTH ELEVATION - WEST WOODSTOCK AVE Bldg B
1/8" = 1'-0"



C EAST ELEVATION Bldg B
1/8" = 1'-0"



B SOUTH ELEVATION - COURTYARD Bldg B
1/8" = 1'-0"



D WEST ELEVATION Bldg B
1/8" = 1'-0"

